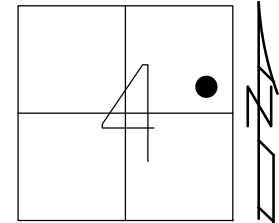


O.D.O.T. DISTRICT 2 SURVEY OFFICE (USE ONLY)

PERSONNEL	REFERENCE NO. <u>68</u>	SHEET <u>37</u> OF <u>74</u>
NOTES <u>MILLER</u>	DATE <u>12/29/23</u>	ROUTE <u>SR 163</u>
H.C. <u>RHOADES</u>	WEATHER <u>CLOUDY</u>	COUNTY <u>OTTAWA</u>
R.C. <u>MILLER</u>	TEMP. <u>39°</u>	TOWNSHIP <u>SALEM</u>
		SECTION <u>4</u>
DWG BY <u>RHOADES</u>	PID <u>PAVING TRAIN</u>	T <u>6</u> N R <u>15</u> E

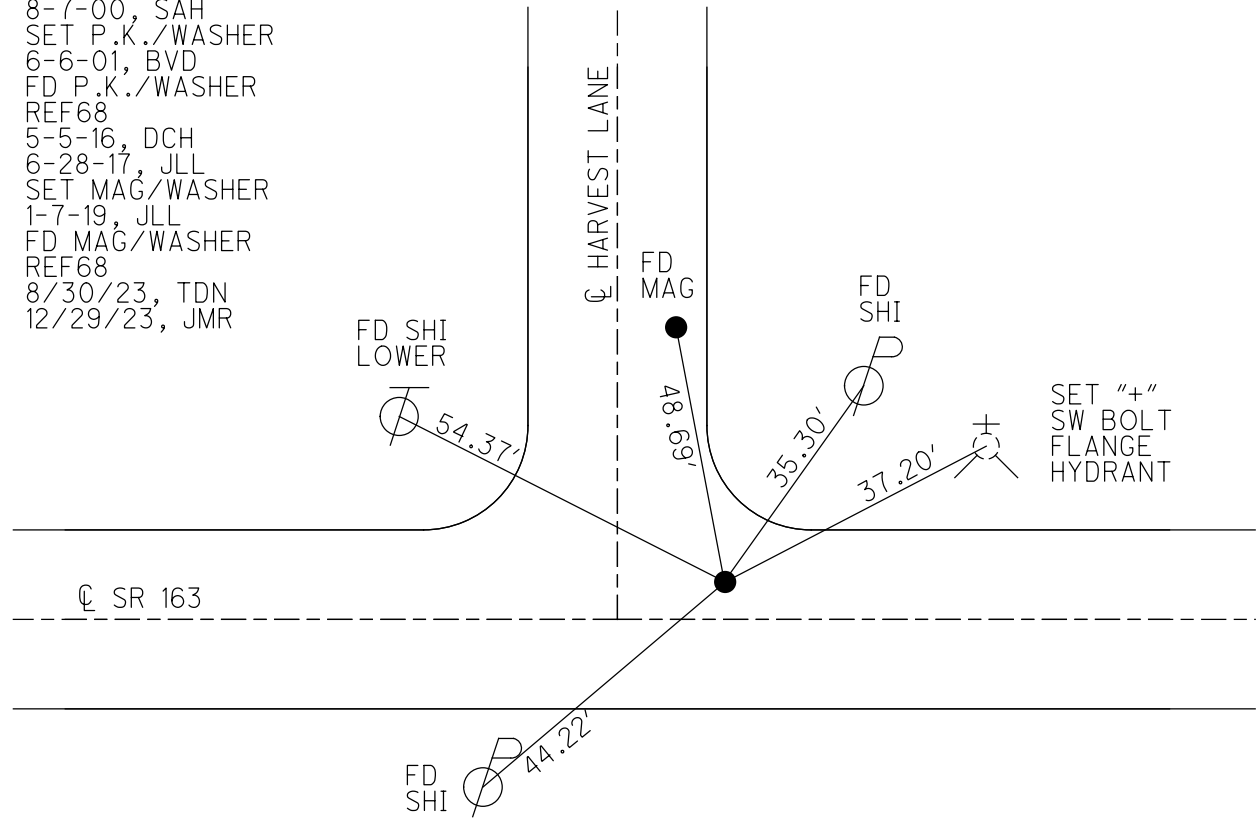
TYPE MONUMENT MAG/WASHER
 ON SURFACE - ~~BELOW~~ ON
 OFFSET \odot PAVEMENT 6.6' LT : ~~RT~~
4.4' TO LT EDGE PAVEMENT
 STATION: 800+74



HORZ. DATUM: NAD83 2011 GEOID: NAVD88 2018
 GRID: NORTHING: 671781.597 EASTING: 1796545.736

RECORD: P.I.
 $\Delta = 11^\circ 50' 30''$ RT
 STA 74+99.11
 FD P.K./WASHER
 8-7-00, SAH
 SET P.K./WASHER
 6-6-01, BVD
 FD P.K./WASHER
 REF68
 5-5-16, DCH
 6-28-17, JLL
 SET MAG/WASHER
 1-7-19, JLL
 FD MAG/WASHER
 REF68
 8/30/23, TDN
 12/29/23, JMR

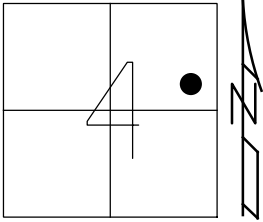
OTTAWA LPD:
 N: 331310.637
 E: 156420.187



O.D.O.T. DISTRICT 2 SURVEY OFFICE (USE ONLY)

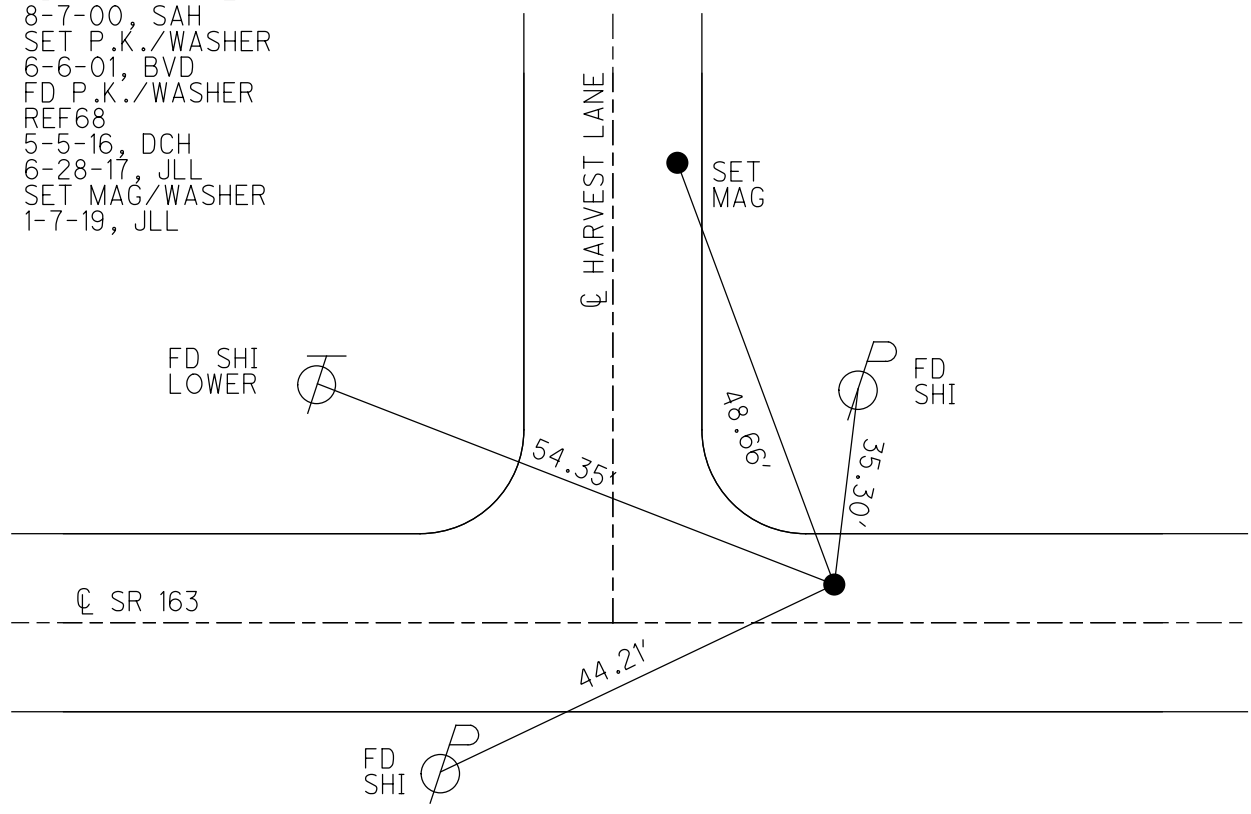
PERSONNEL _____ REFERENCE NO. 68 SHEET 37 OF 74
 NOTES LEU DATE 6-28-17 ROUTE SR 163
 H.C. LEU WEATHER CLOUDY COUNTY OTTAWA
 R.C. CARSON TEMP. 79° TOWNSHIP SALEM
 DWG BY JAMES PID 95757 SECTION 4
 T 6 N R 15 E

TYPE MONUMENT P.K./WASHER
 ON SURFACE - ~~BELOW~~ ON _____
 OFFSET $\text{\textcircled{C}}$ PAVEMENT 6.6' LT : ~~RT~~
4.4' TO LT EDGE PAVEMENT
 STATION: 800+74



HORIZ.DATUM: NAD83 2011 GEOID: NAVD88 2012A
 GRID: NORTHING: 671781.601 EASTING: 1796545.717

RECORD: P.I.
 $\Delta = 11^\circ 50' 30''$ RT
 STA 74+99.11
 FD P.K./WASHER
 8-7-00, SAH
 SET P.K./WASHER
 6-6-01, BVD
 FD P.K./WASHER
 REF68
 5-5-16, DCH
 6-28-17, JLL
 SET MAG/WASHER
 1-7-19, JLL



O.D.O.T. DISTRICT 2 SURVEY OFFICE

PERSONNEL

REFERENCE NO. 68

SHEET 27 OF 63

NOTES COIDES

H.C. HUSS

R.C. KATGER

DATE 8/7/00

WEATHER SUN

TEMP. 85°

ROUTE 163

COUNTY Ottawa

TOWNSHIP Salem

SECTION 4

T 6 N R 15 E

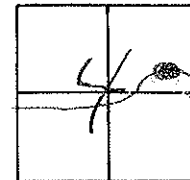
TYPE MONUMENT PK/W

ON SURFACE ~~NO~~ YES

LEFT-℄ PAV'T. ~~NO~~ 6.6 LT

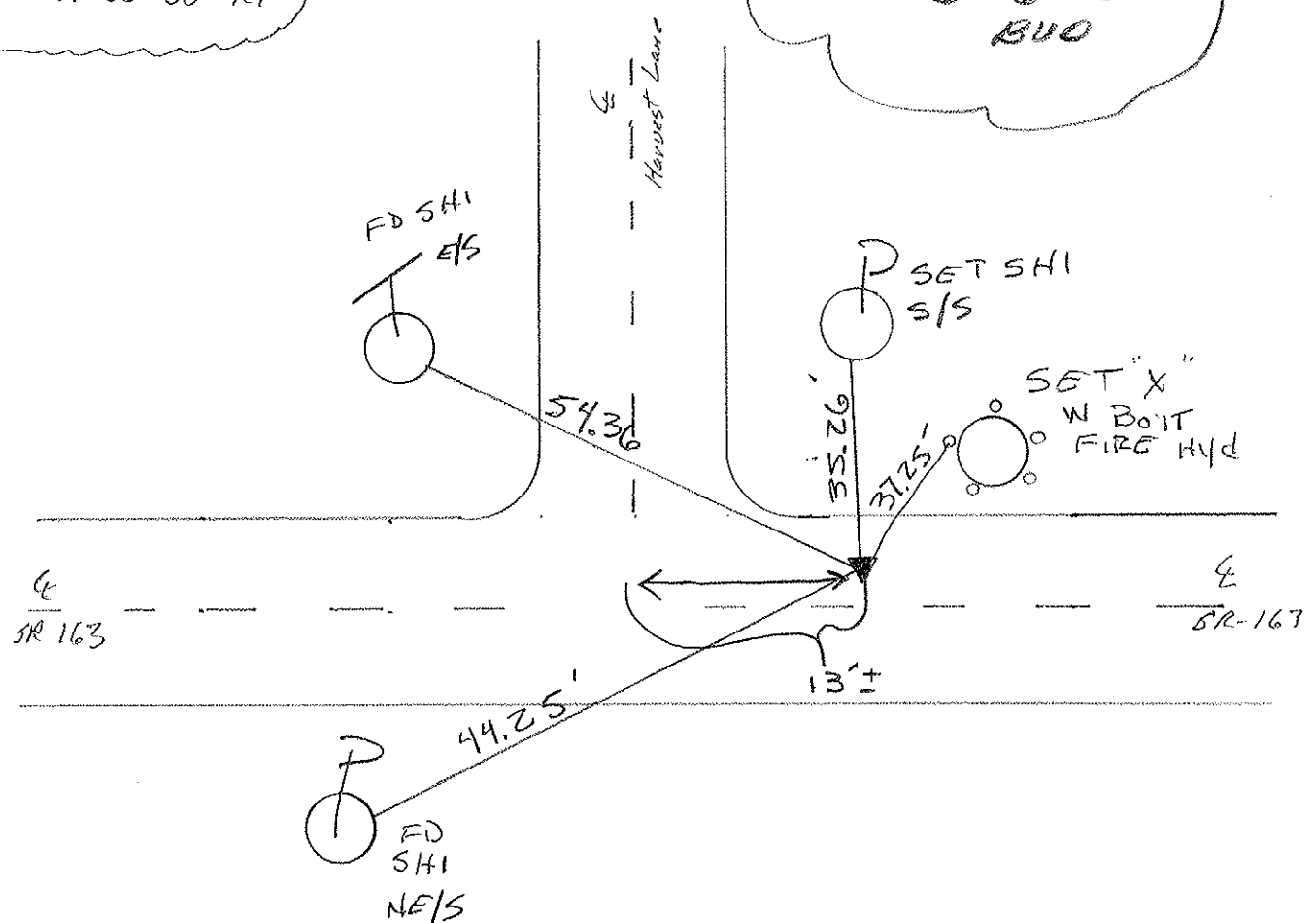
4.4 TO LT EDGE PAVEMENT

S.L.M. 800+74



Record:
 PI Sta 74+99.11
 Δ = 112°50'30" Rt

SET PK WASHER
 6-6-01
 BUO



O.D.O.T. DISTRICT 2 SURVEY OFFICE

PERSONNEL

REFERENCE NO. 68

SHEET 19 OF

NOTES RIPPLE

H.C. BARBOUR

DATE 5/24/90

ROUTE #163

R.C. GEYMAN

WEATHER Cloudy

COUNTY OTTAWA

TEMP. 70°

TOWNSHIP SALEM

SECTION 4

T6 N R 15 E

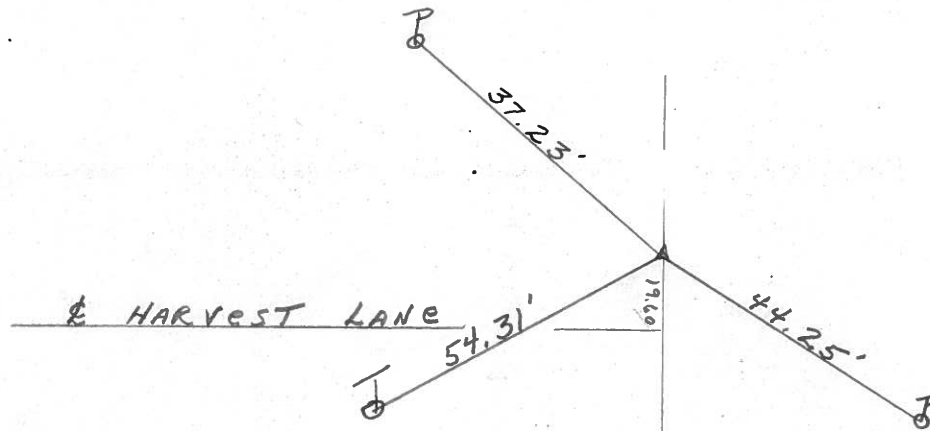
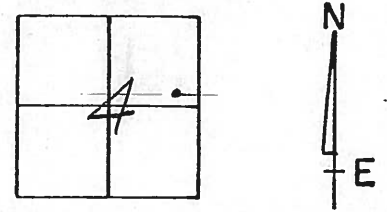
TYPE MONUMENT Set, P.K. & Washer

ON SURFACE - BELOW P.K. Nail

LEFT- & PAV'T. - RIGHT 6.6' LT. & Pav'T.

TO EDGE PAVEMENT

S.L.M. STA. 74+99.11



P.I. 74+99.11
Δ = 11° 50' 30" RT.

PERSONNEL	TITLE	PERSONNEL	TITLE
COUNTY <u>Ottawa</u> DATE <u>March 1970</u>			
S. R. <u>163</u> WEATHER _____			
SEC. <u>Oak Harbor-East</u> TEMP. _____			
DESCRIPTION <u>Sec-4 Salem Twp.</u> JOB NO. _____			
	LEFT	CENTER LINE	RIGHT

P.C.
77+27.69
Small R.R. spk.

70

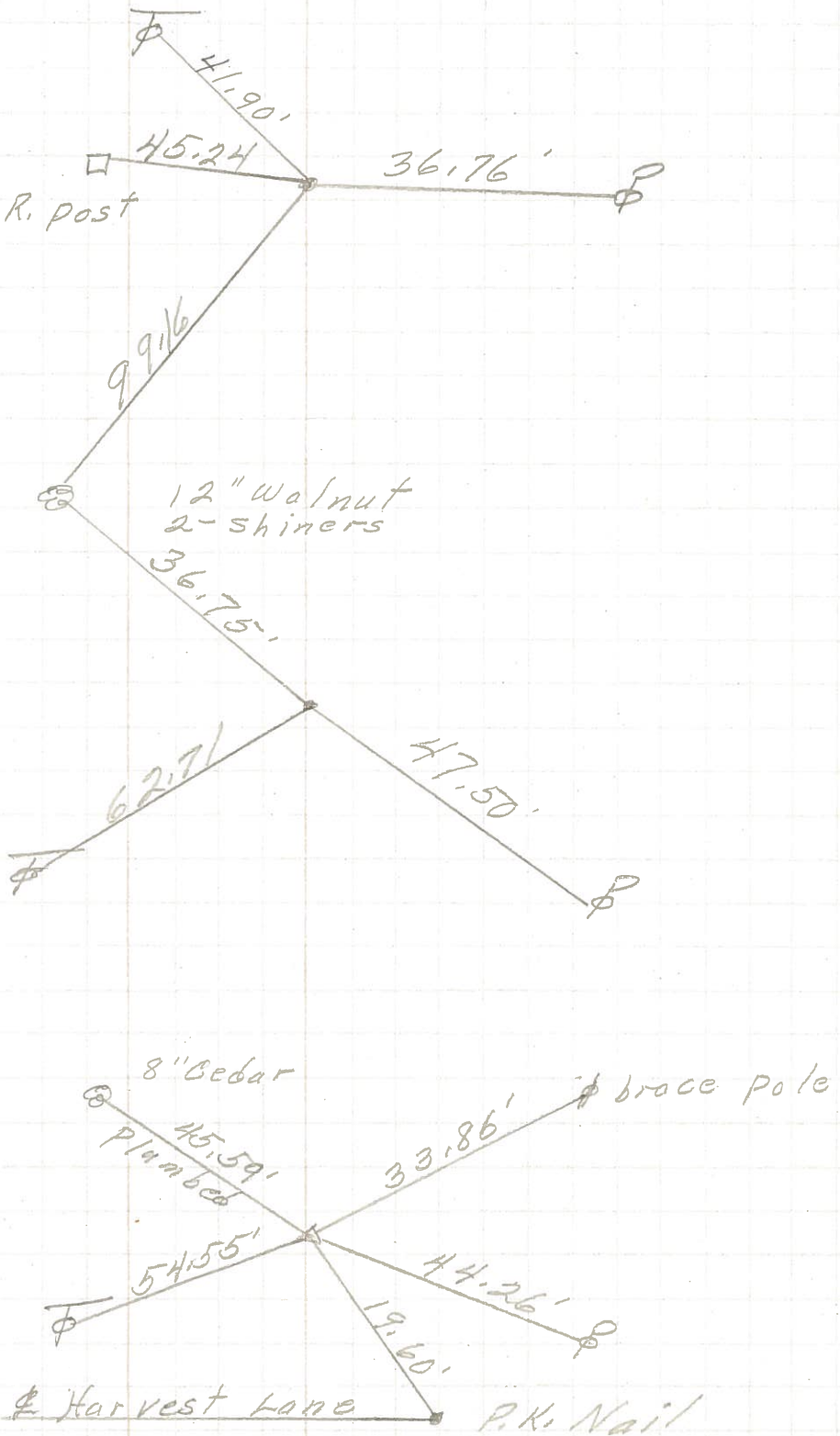
G.R. post

P.T.
76+17.10
P.K. Nail

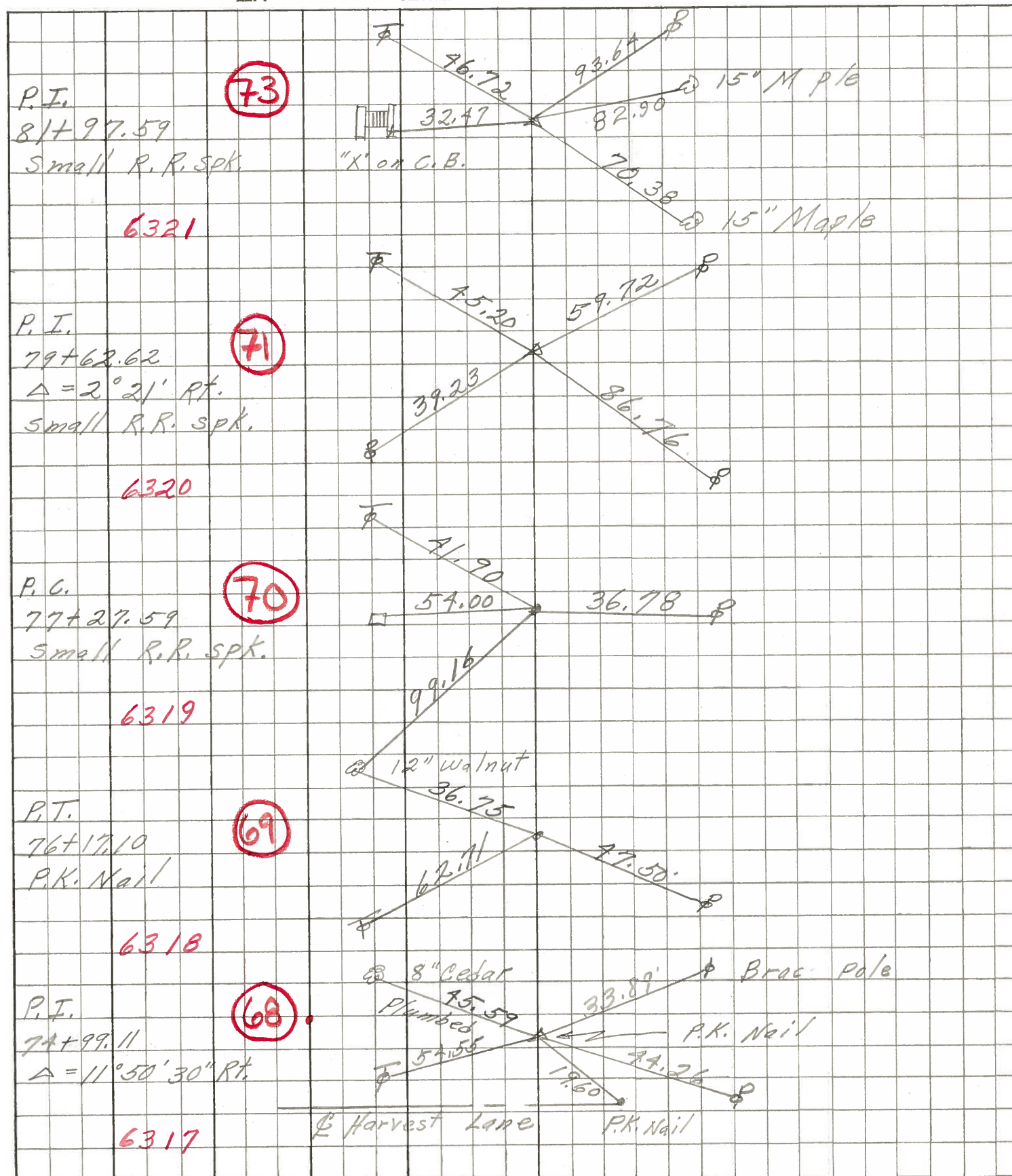
69

P.I.
74+99.11
 $\Delta = 11^{\circ} 50' 30''$ Rt.

68



PERSONNEL	TITLE	PERSONNEL	TITLE	COUNTY	<u>Ottawa</u>	DATE
<u>Schneider</u>		<u>Potts</u>		S. R.	<u>163</u>	WEATHER
<u>Mosser</u>				SEC.	<u>Oak Ha on East</u>	TEMP.
<u>Barbour</u>				DESCRIPTION	<u>Ties for Control Point</u>	JOB NO.
<u>Redding</u>						



PERSONNEL	TITLE	PERSONNEL	TITLE	COUNTY	DATE
Krabik				Ottawa	Feb. 19, 1969
Kowaleski				S. R. #163	WEATHER
Geyman				SEC. F2 (pt)	TEMP
Bruggeman					
DESCRIPTION Oak Harbor 77077 Locations East					JOB NO.

