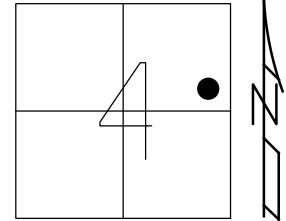


O.D.O.T. DISTRICT 2 SURVEY OFFICE (USE ONLY)

PERSONNEL _____ REFERENCE NO. 69 SHEET 38 OF 74
 NOTES MILLER DATE 12/29/23 ROUTE SR 163
 H.C. RHOADES WEATHER CLOUDY COUNTY OTTAWA
 R.C. MILLER TEMP. 39° TOWNSHIP SALEM
 DWG BY RHOADES PID PAVING TRAIN SECTION 4
 T 6 N R 15 E

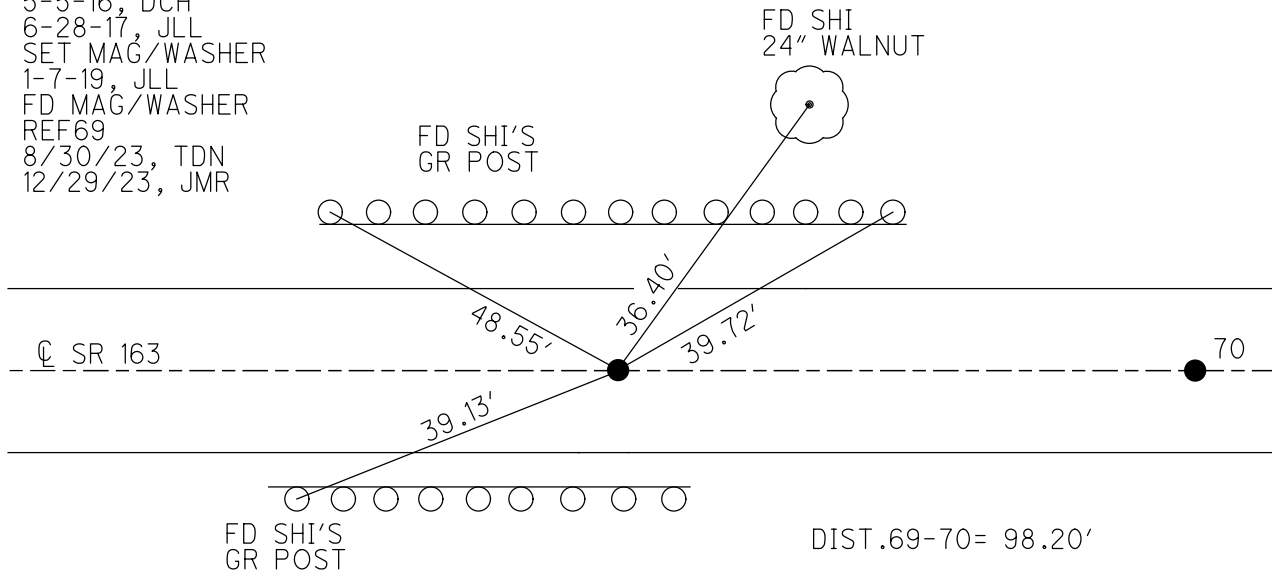
TYPE MONUMENT MAG/WASHER
 ON SURFACE - ~~BELOW~~ ON
 OFFSET \odot PAVEMENT ON LT : RT
- TO - EDGE PAVEMENT
 STATION: 801+91



HORIZ.DATUM: NAD83 2011 GEOID: NAVD88 2012A
 GRID: NORTHING: 671761.144 EASTING: 1796662.817

RECORD:
 FD P.K./WASHER
 8-7-00, SAH
 SET P.K./WASHER
 6-6-01, BVD
 FD P.K./WASHER
 REF69
 5-5-16, DCH
 6-28-17, JLL
 SET MAG/WASHER
 1-7-19, JLL
 FD MAG/WASHER
 REF69
 8/30/23, TDN
 12/29/23, JMR

OTTAWA LPD:
 N: 331290.988
 E: 156537.413



O.D.O.T. DISTRICT 2 SURVEY OFFICE

PERSONNEL

REFERENCE NO. 69

SHEET 28 OF 63

NOTES CORDS

H.C. HUSS

R.C. KATGER

DATE 8/7/00

WEATHER SUN

TEMP. 85°

ROUTE 163

COUNTY Ottawa

TOWNSHIP Salem

SECTION 4

T 6 N R 15 E

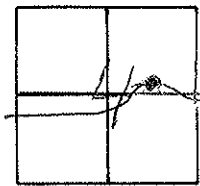
TYPE MONUMENT P.K.

ON SURFACE - ~~NO~~ YES

~~PAV'T.~~ - PAV'T. - RIGHT 1" RT

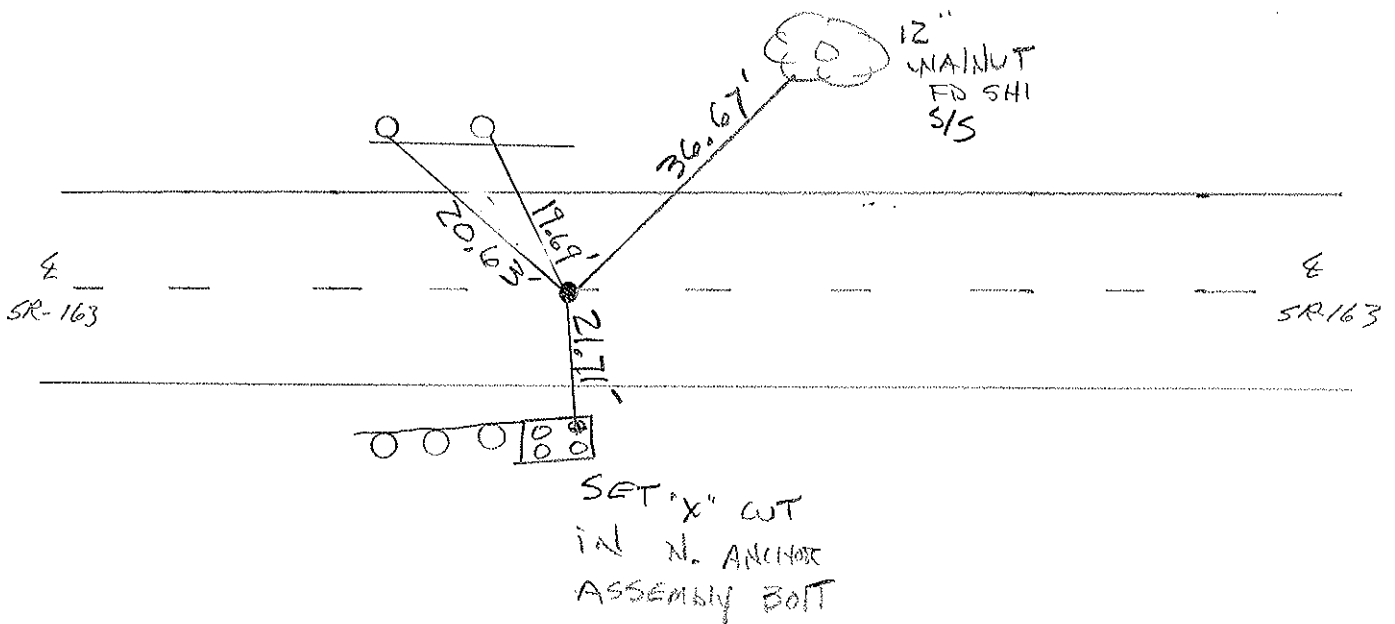
10.7 TO RT EDGE PAVEMENT

S.L.M. 801 + 91



Record:
Pt 76+17.10

SET PK# WASHER
 6-6-01
 BVD



O.D.O.T. DISTRICT 2 SURVEY OFFICE

PERSONNEL

REFERENCE NO. 69

SHEET 20 OF

NOTES Ripple

H.C. BARBOUR

R.C. GEYMAN

DATE 5/24/90

WEATHER Cloudy

TEMP. 70°

ROUTE #163

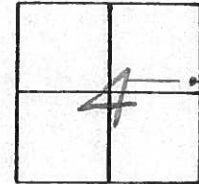
COUNTY OTTAWA

TOWNSHIP SALEM

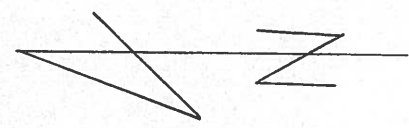
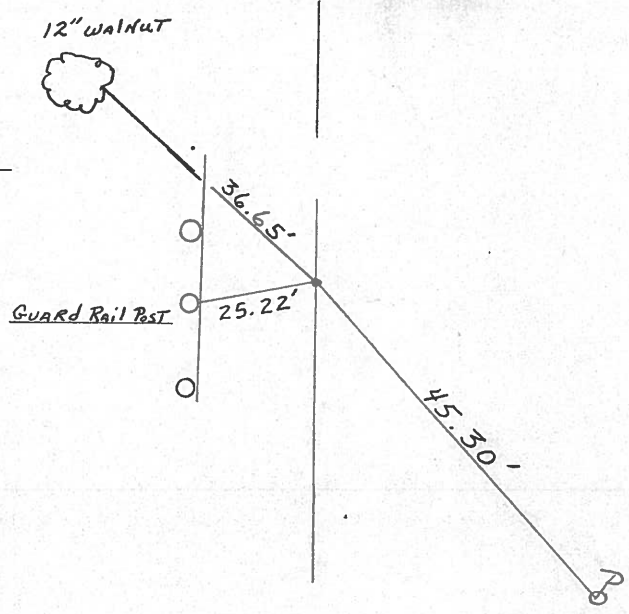
SECTION 4

T6 N R 15 E

TYPE MONUMENT Set P.K. Nail & Washer
ON SURFACE - BELOW P.K. Nail & Washer
LEFT - ¢ Pav't. - RIGHT 1' RT. & Pav't.
 TO EDGE PAVEMENT
S.L.M. STA. 76+17.10



P.T. 76+17.10'



PERSONNEL TITLE PERSONNEL TITLE

COUNTY Ottawa DATE March 1970

S. R. 163 WEATHER _____

SEC. Oak Harbor-East TEMP. _____

DESCRIPTION Sec-4 Salem Twp. JOB NO. _____

LEFT

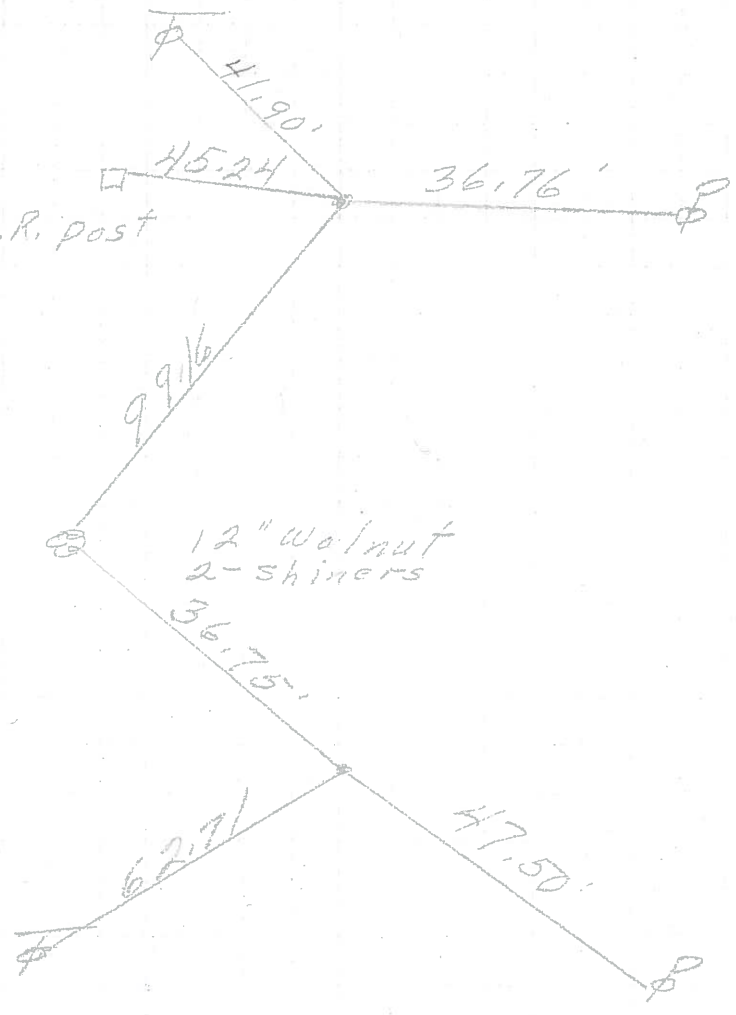
CENTER LINE

RIGHT

P.C.
77+27.59
Small R.R. spike

70

G.R. post

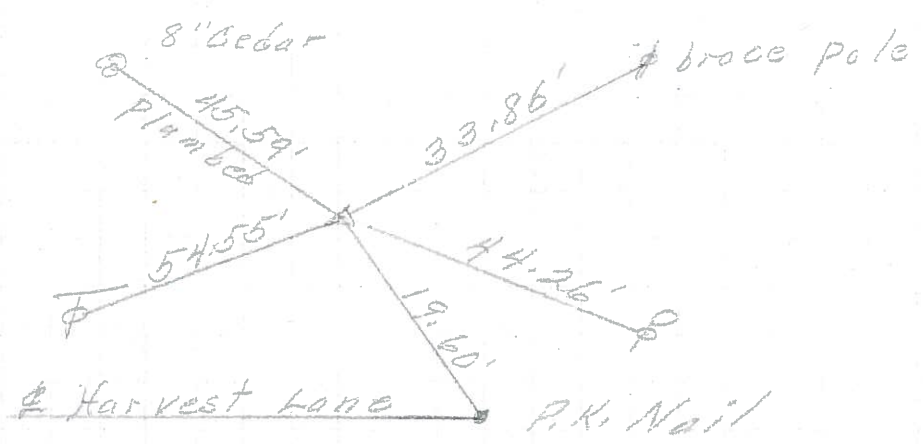


P.T.
76+17.10
P.K. Nail

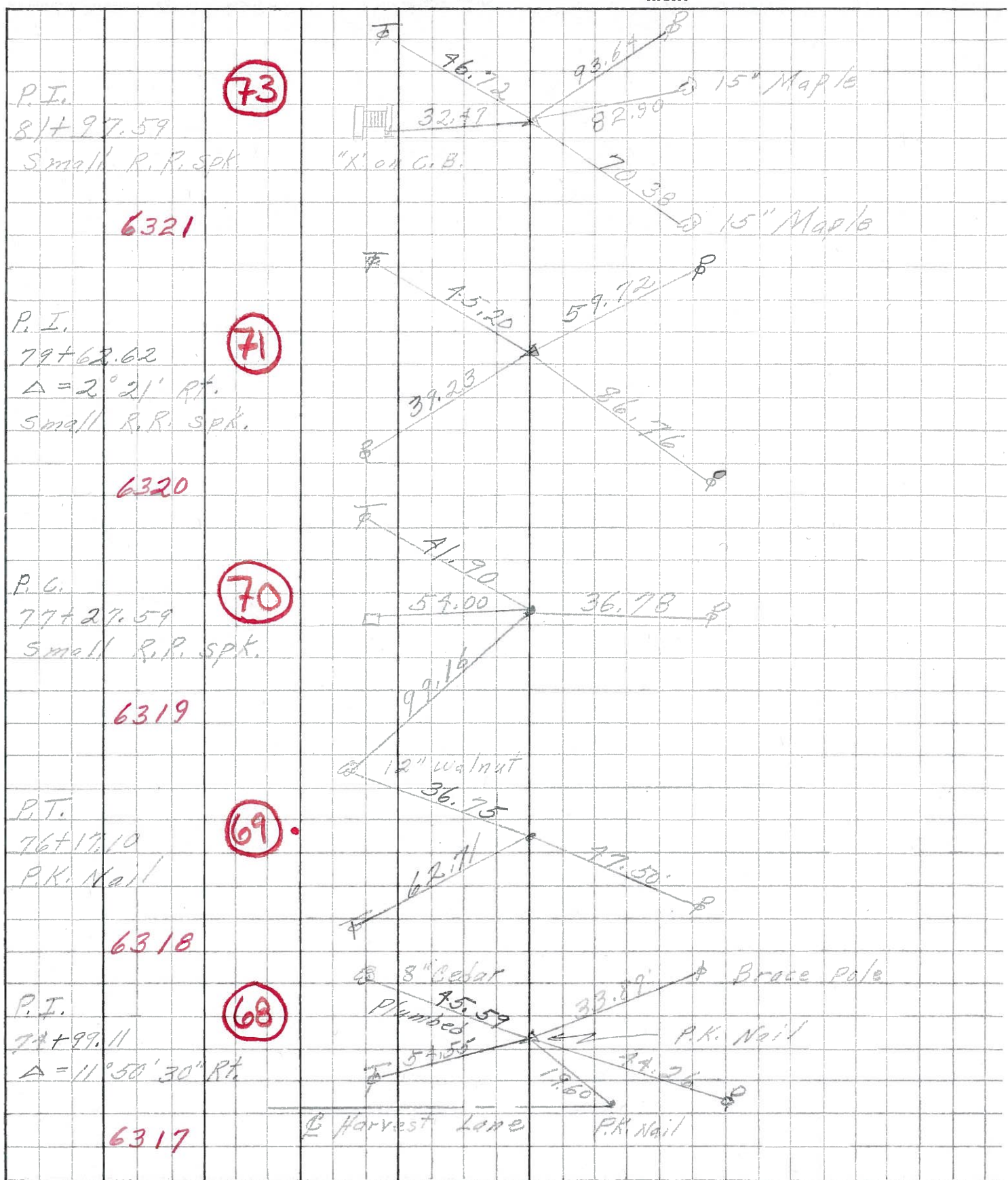
69

P.I.
74+99.11
 $\Delta = 11^{\circ} 50' 30''$ Rt.

68



PERSONNEL	TITLE	PERSONNEL	TITLE	COUNTY	DATE
<u>Schneider</u>		<u>Potts</u>		<u>Ottawa</u>	<u>Aug. 1968</u>
<u>Mosser</u>				S. R. <u>163</u>	WEATHER
<u>Barbour</u>				SEC. <u>Dak Harbor East</u>	TEMP.
<u>Redding</u>					
DESCRIPTION	<u>Ties for Control Points</u>				JOB NO.



PERSONNEL	TITLE	PERSONNEL	TITLE	COUNTY	DATE
Krabikh				Ottawa	Feb. 19, 1967
Howaleski				S. R. #163	WEATHER
Geyman				SEC. E2 (PT)	TEMP.
Bruggeman					

DESCRIPTION Oak Harbor Mon. Locations EAST JOB NO. _____

