

O.D.O.T. DISTRICT 2 SURVEY OFFICE (USE ONLY)

PERSONNEL

REFERENCE NO. 70

SHEET 39 OF 74

NOTES MILLER

DATE 12/29/23

ROUTE SR 163

H.C. RHOADES

WEATHER CLOUDY

COUNTY OTTAWA

R.C. MILLER

TEMP. 39°

TOWNSHIP SALEM

SECTION 4

DWG BY RHOADES

PID PAVING TRAIN

T 6 N R 15 E

TYPE MONUMENT MAG/WASHER

ON SURFACE - ~~BELOW~~ ON

OFFSET 0.2' ± : RT

11.0' TO RT EDGE PAVEMENT

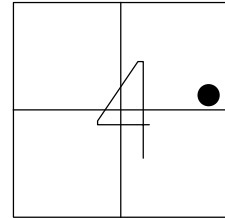
STATION: 803+01

HORIZ.DATUM: NAD83 2011

GEOID: NAVD88 2012A

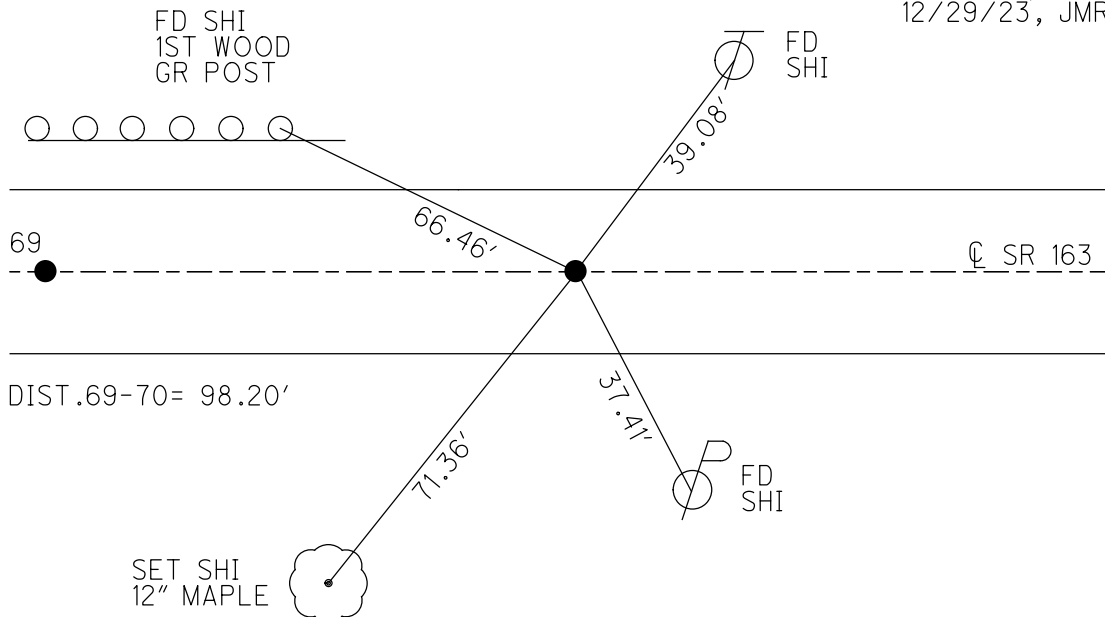
GRID: NORTHING: 671746.163

EASTING: 1796759.816



OTTAWA LPD:  
N: 331276.673  
E: 156634.517

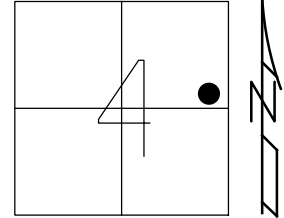
RECORD: PC  
STA 77+27.59  
FD P.K./WASHER  
ATOP SM R.R.SPIKE  
8-7-00, SAH  
SET P.K./WASHER  
6-6-01, BVD  
FD P.K./WASHER  
REF70  
5-5-16, DCH  
7-11-17, RGN  
SET MAG/WASHER  
1-7-19, JLL  
FD MAG/WASHER  
REF70  
8/30/23, TDN  
12/29/23, JMR



O.D.O.T. DISTRICT 2 SURVEY OFFICE (USE ONLY)

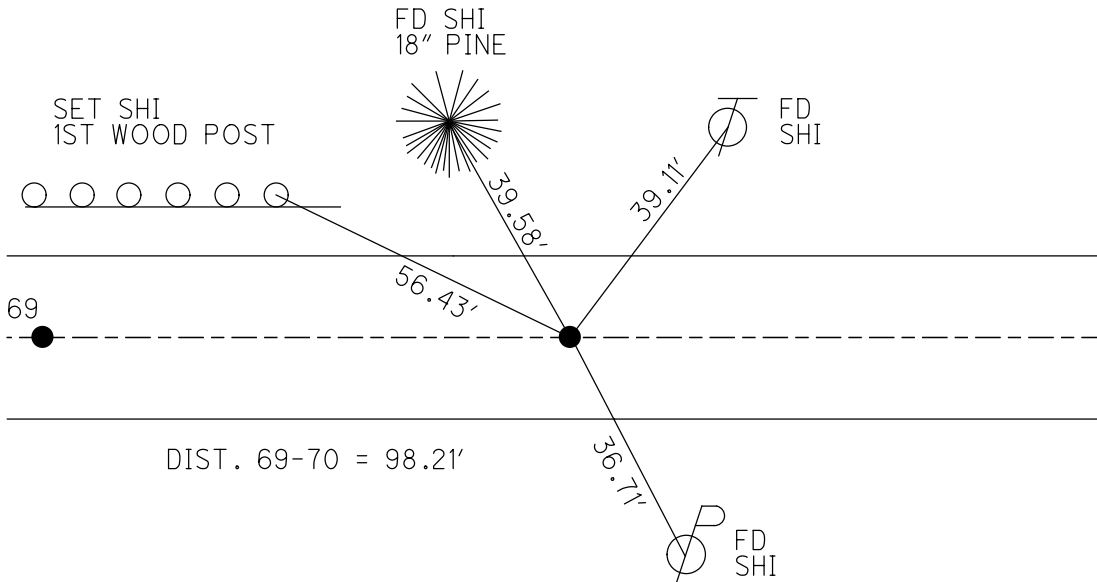
PERSONNEL \_\_\_\_\_ REFERENCE NO. 70 SHEET 39 OF 74  
 NOTES LEU DATE 7-11-17 ROUTE SR 163  
 H.C. NUHFER WEATHER SUNNY COUNTY OTTAWA  
 R.C. CARSON TEMP. 80° TOWNSHIP SALEM  
 DWG BY JAMES PID 95757 SECTION 4  
 T 6 N R 15 E

TYPE MONUMENT P.K./WASHER  
 ON SURFACE - ~~BELOW~~ ON  
 OFFSET 0.2' ~~LT~~ : RT  
11.0' TO RT EDGE PAVEMENT  
 STATION: 803+01



HORIZ.DATUM: NAD83 2011 GEOID: NAVD88 2012A  
 GRID: NORTHING: 671746.185 EASTING: 1796759.855

RECORD: PC  
 STA 77+27.59  
 FD P.K./WASHER  
 ATOP SM R.R.SPIKE  
 8-7-00, SAH  
 SET P.K./WASHER  
 6-6-01, BVD  
 FD P.K./WASHER  
 REF70  
 5-5-16, DCH  
 7-11-17, RGN  
 SET MAG/WASHER  
 1-7-19, JLL



# O.D.O.T. DISTRICT 2 SURVEY OFFICE

PERSONNEL

REFERENCE NO. 70

SHEET 29 OF 63

NOTES Cordes

H.C. Huss

R.C. Karger

DATE 8-7-00

WEATHER Fair

TEMP. +85°F

ROUTE 163

COUNTY Ottawa

TOWNSHIP Salem

SECTION 4

T6 N R 15 E

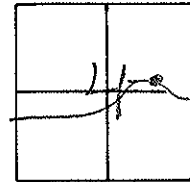
TYPE MONUMENT PK/W

ON SURFACE - ~~BLOW~~ Surface

~~NEED PAINT~~ - RIGHT 1' RT

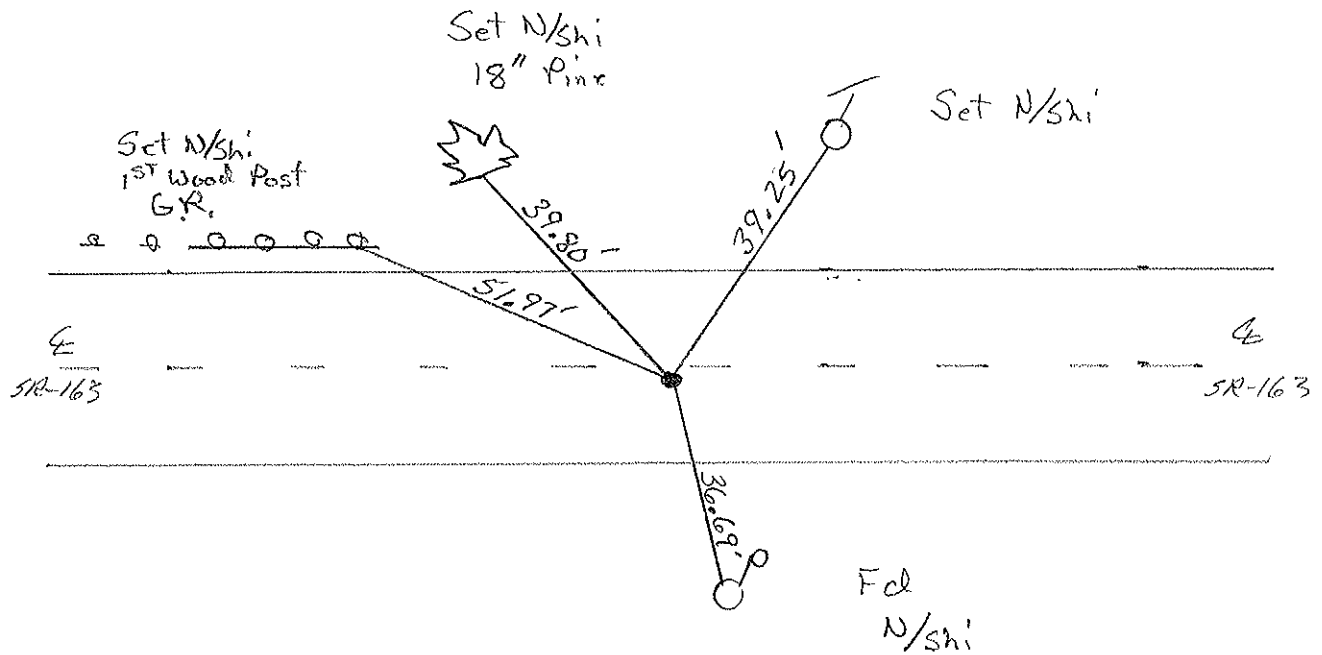
11.1 TO RT. EDGE PAVEMENT

S.L.M. 803+01



Record: PC  
Sta- 77+27.59  
PK/W over Sm. RR/spike

SET PK WASHER  
6-6-01  
BVD

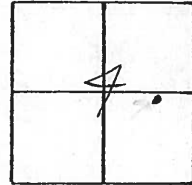


Located Lt. Side  
of Dr. Res. 604

# O.D.O.T. DISTRICT 2 SURVEY OFFICE

PERSONNEL \_\_\_\_\_ REFERENCE NO. 70 SHEET 21 OF \_\_\_\_\_  
 NOTES Cronin DRAWN 7/06/88  
 H.C. Ripple DATE 5/24/90 ROUTE #163  
 R.C. BARBOUR WEATHER cloudy COUNTY Ottawa  
Geyman TEMP. 70° TOWNSHIP Salem  
 SECTION 4

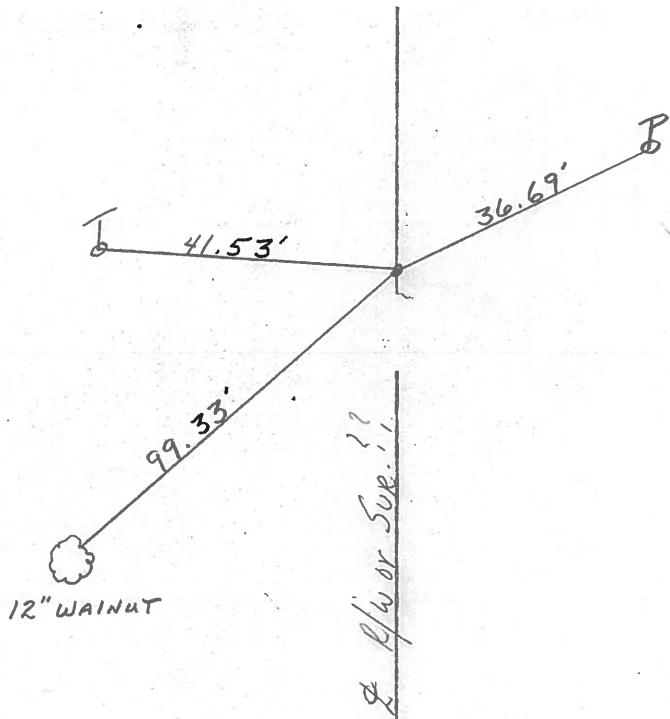
T. 6 NR. 15 of  
 Village of OAK HARBOR



TYPE MONUMENT Set P.K. Nail & Washer  
 ON SURFACE - BELOW Small R.R. Spike  
 LEFT - ☉ PAV'T. - RIGHT ☉ PAV'T.  
 TO EDGE PAVEMENT  
 S.L.M. Sta. 77+27.59



P.C.  
77+27.59  
P.K. Washer A Top Small  
R.R. Spike



PERSONNEL TITLE PERSONNEL TITLE

COUNTY Ottawa DATE March 1970

S. R. 163 WEATHER \_\_\_\_\_

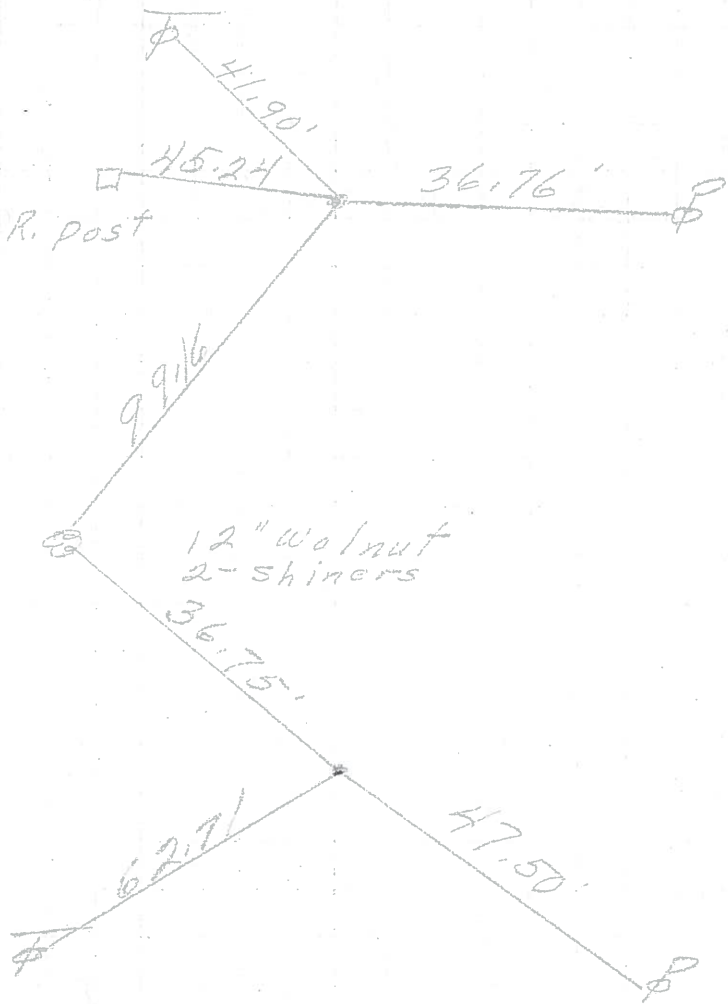
SEC. Oak Harbor-East TEMP. \_\_\_\_\_

DESCRIPTION Sec-4 Salem Twp. LEFT CENTER LINE RIGHT JOB NO. \_\_\_\_\_

P.C.  
77+27.59  
Small R.R. spike

70

G.R. post

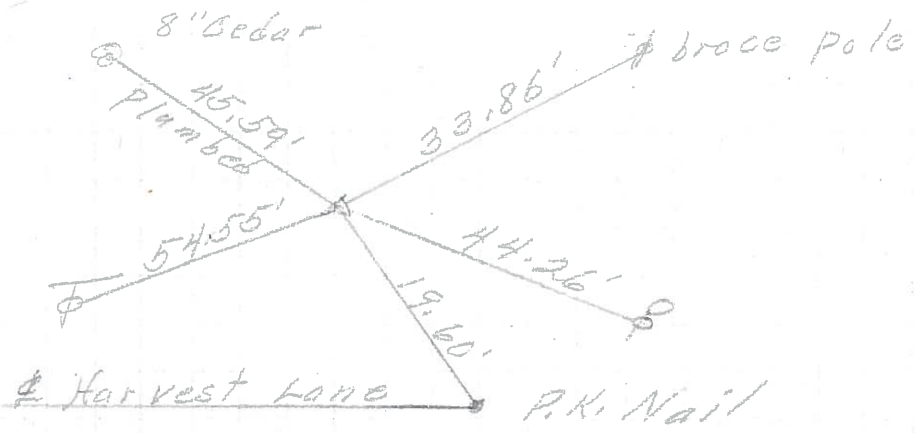


P.T.  
76+17.10  
P.K. Nail

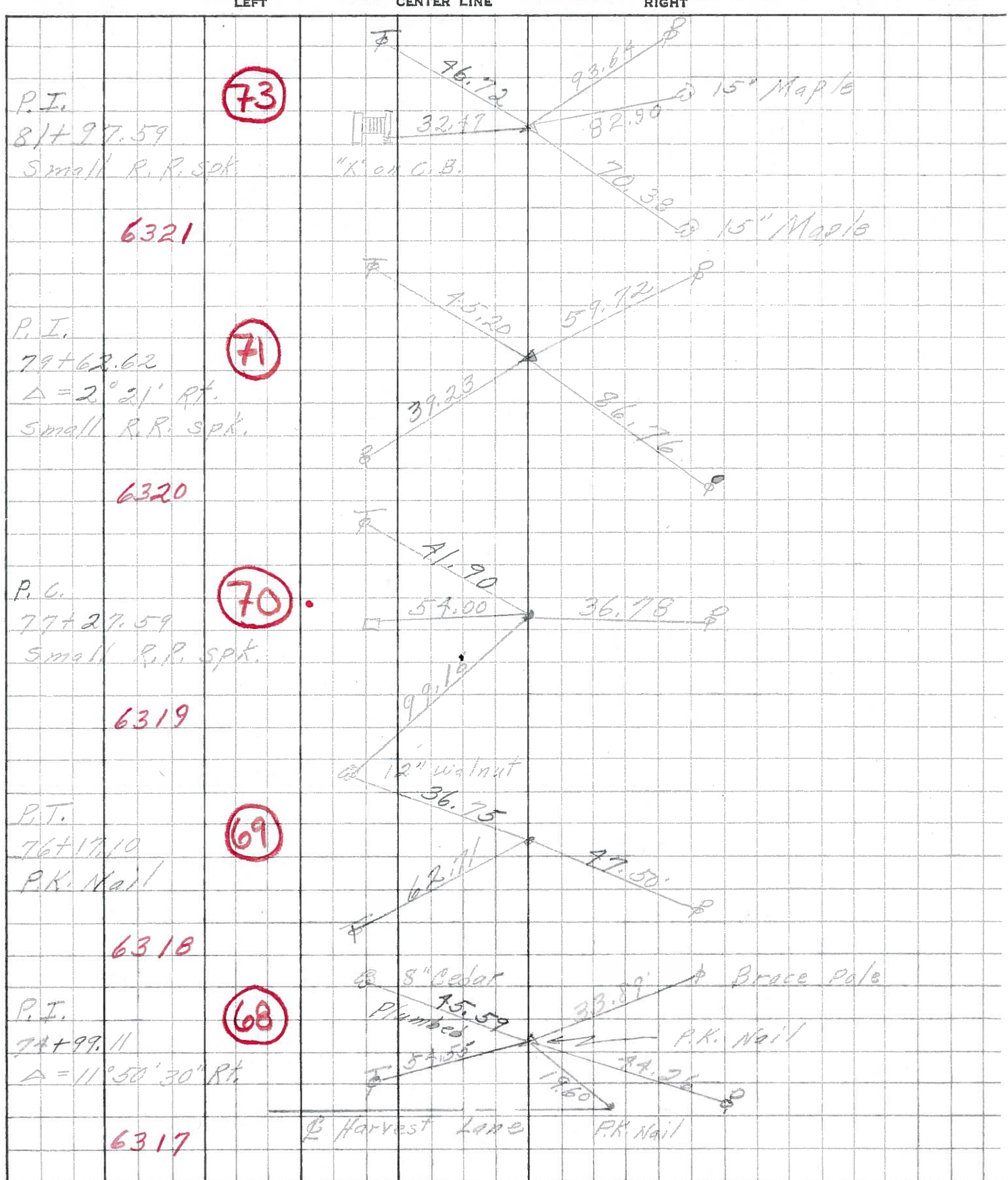
69

P.I.  
74+99.11  
 $\Delta = 11^{\circ} 50' 30''$  Rt.

68



PERSONNEL	TITLE	PERSONNEL	TITLE	COUNTY	DATE
<u>Schneider</u>		<u>Potts</u>		<u>Ottawa</u>	<u>Aug. 1968</u>
<u>Mosser</u>				S. R. <u>163</u>	WEATHER
<u>Barbour</u>				SEC. <u>Oak Harbor East</u>	TEMP.
<u>Redding</u>					
DESCRIPTION	<u>Ties for Control Points</u>				JOB NO.



PERSONNEL	TITLE	PERSONNEL	TITLE	COUNTY	DATE	WEATHER	TEMP.
Krabitt				Ottawa	Feb 19, 1967		
Kowaleski				S. R. #163			
Geymann							
Bruggeman				SEC. E2 (PT)			

DESCRIPTION Oak Harbor Man. Locations EAST JOB NO. \_\_\_\_\_

