

O.D.O.T. DISTRICT 2 SURVEY OFFICE (USE ONLY)

PERSONNEL

REFERENCE NO. 71

SHEET 40 OF 74

NOTES LEU

DATE 6-28-17

ROUTE SR 163

H.C. LEU

WEATHER SUNNY

COUNTY OTTAWA

R.C. CARSON

TEMP. 80°

TOWNSHIP SALEM

SECTION 4

DWG BY JAMES

PID 95757

T 6 N R 15 E

TYPE MONUMENT ON

ON SURFACE - BELOW ON

OFFSET C PAVEMENT 2.5' LT : RT

9.1' TO LT EDGE PAVEMENT

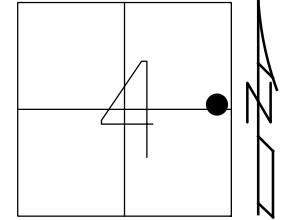
STATION: 805+27

HORIZ.DATUM: NAD83 2011

GEOID: NAVD88 2012A

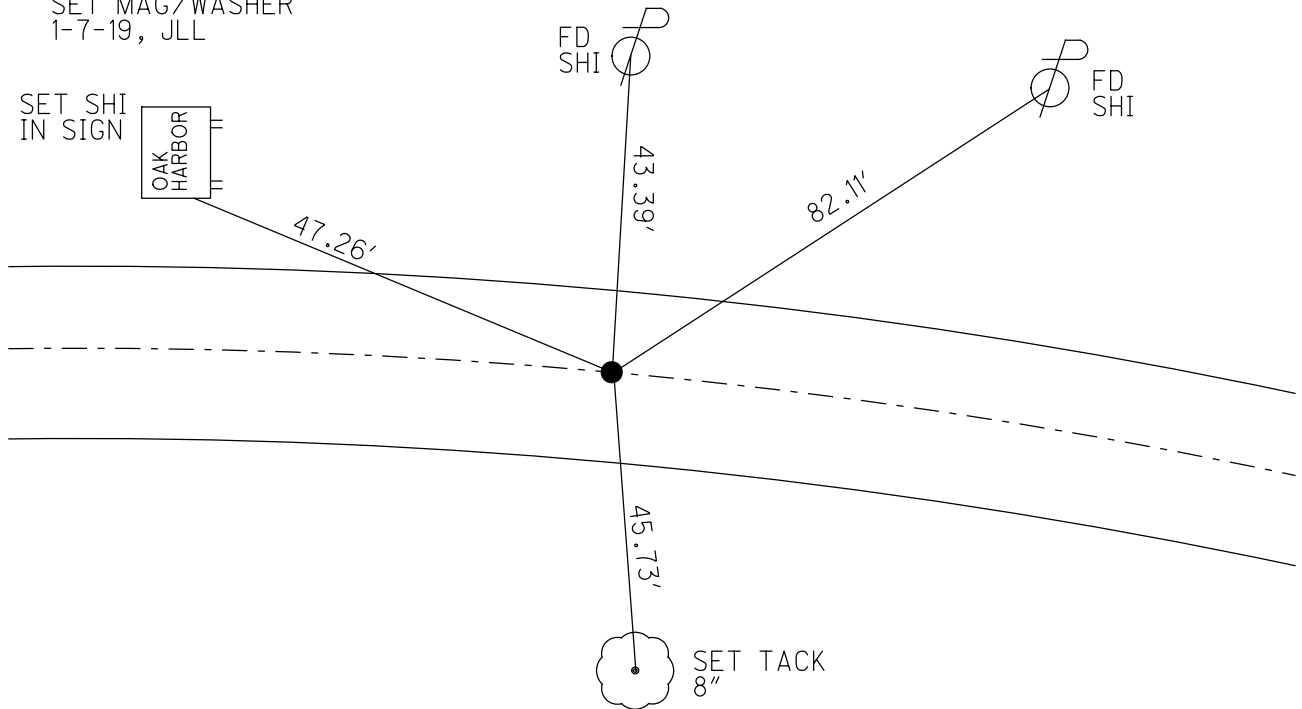
GRID: NORTHING: 671706.401

EASTING: 1796990.229



RECORD: P.I.
 $\Delta = 2^\circ 21' \text{ RT}$
 STA 79+62.62
 FD P.K./WASHER
 8-7-00, SAH
 SET P.K./WASHER
 6-6-01, BVD
 FD P.K./WASHER
 REF71
 5-5-16, DCH
 6-28-17, JLL
 SET MAG/WASHER
 1-7-19, JLL

SET SHI
 IN SIGN



O.D.O.T. DISTRICT 2 SURVEY OFFICE

PERSONNEL

REFERENCE NO. 71

SHEET 30 OF 63

NOTES Condos

H.C. Huss

R.C. Karger

DATE 8-7-00

WEATHER Fair

TEMP. +85°F

ROUTE 163

COUNTY Ottawa

TOWNSHIP Salem

SECTION 4

T. 6 N. R. 15 E.

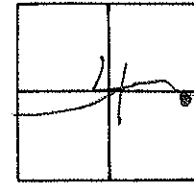
TYPE MONUMENT PK/w

~~ON SURFACE~~ - ~~(BELOW)~~ 2" Below

~~LEFT~~ ~~OR~~ ~~PAV'T~~ ~~RIGHT~~ 2.5' Wt.

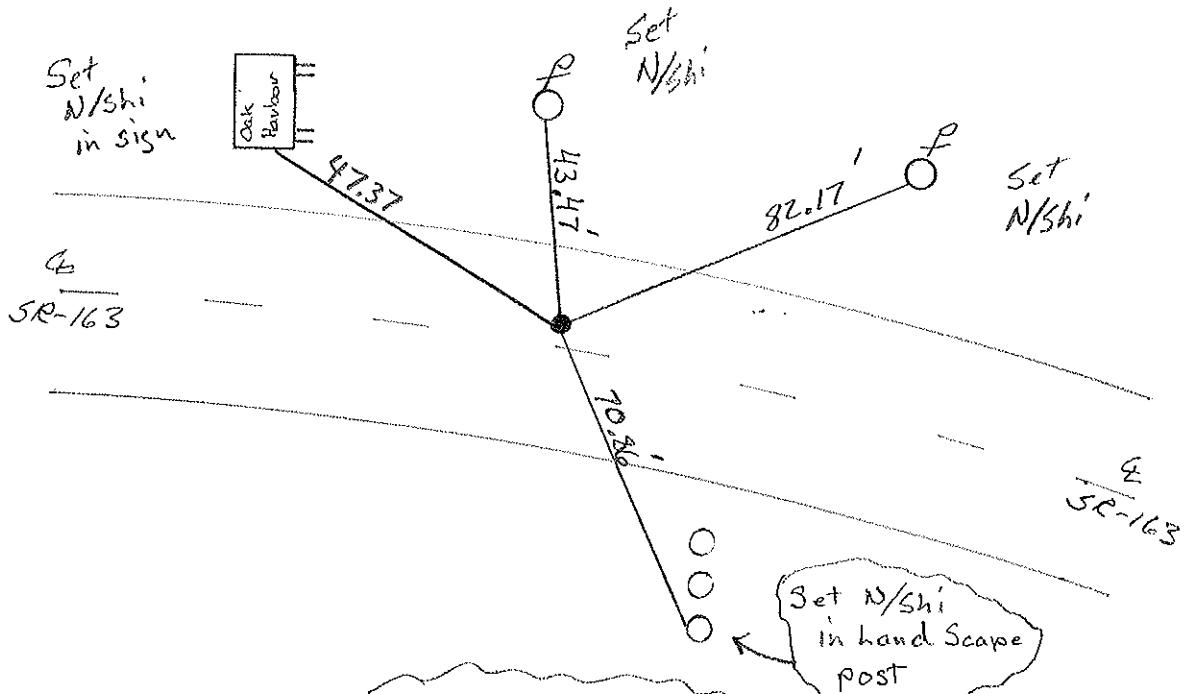
9.1' TO Lt. EDGE PAVEMENT

S.L.M. 805+27



Record: P.I.
Sta - 79+62.62
A = 02°-21'-00" Rt.

SET PREWASHER
6-6-01
BVD



Point Located
65' ± West of
E for Oak Ridge Rd

O.D.O.T. DISTRICT 2 SURVEY OFFICE

PERSONNEL

REFERENCE NO. 71

SHEET 22 OF

NOTES Cronin

DRAWN 7/06/88

H.C. Ripple

DATE 5-24-90

ROUTE # 163

R.C. BARBOUR

WEATHER Cloudy

COUNTY Ottawa

Geyman

TEMP. 72°

TOWNSHIP Salem

SECTION 4

T6 NR 15 E

VILLAGE of OAK HARBOR

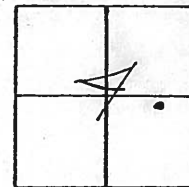
TYPE MONUMENT Set PK + Washer

ON SURFACE - BELOW

LEFT- & PAV'T. - RIGHT 2.5' LT &

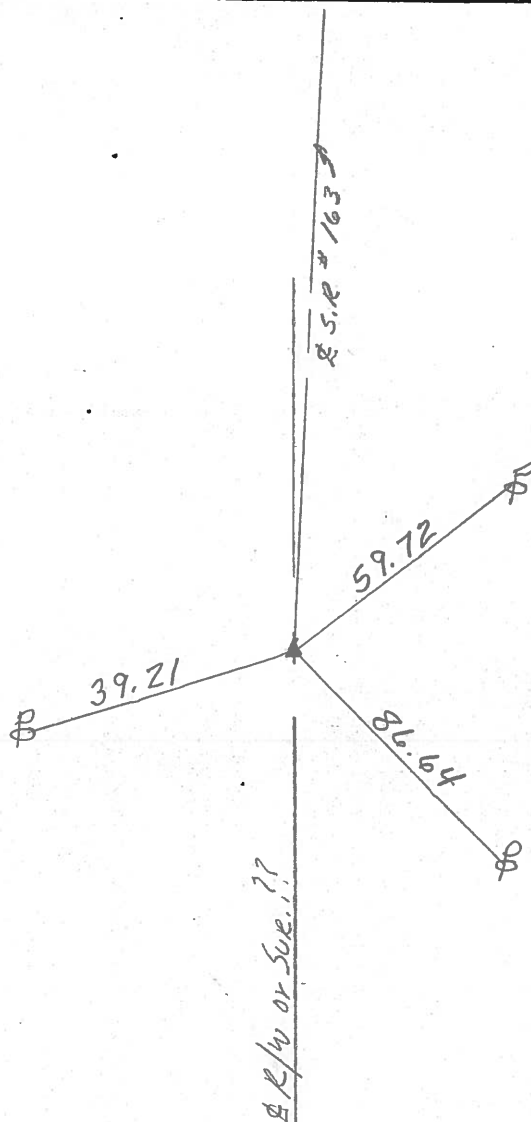
 TO EDGE PAVEMENT

S.L.M. Sta. 79 + 62.62



P.I.

$\Delta = 02^{\circ}21'00''$ Rt. Plan



PERSONNEL TITLE PERSONNEL TITLE

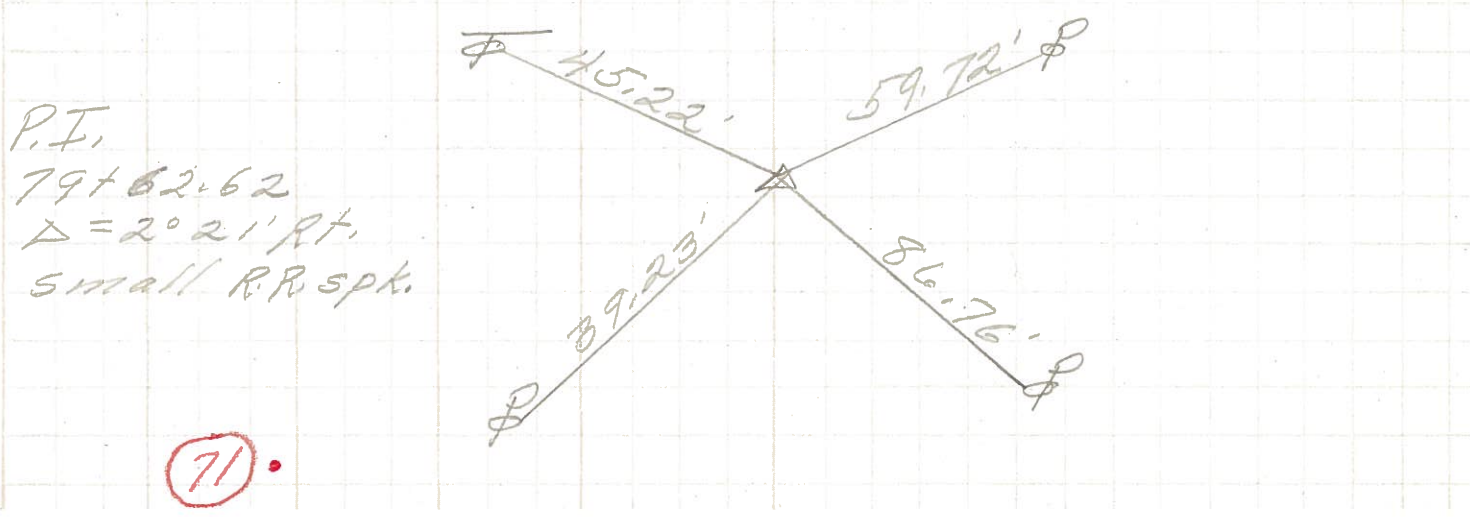
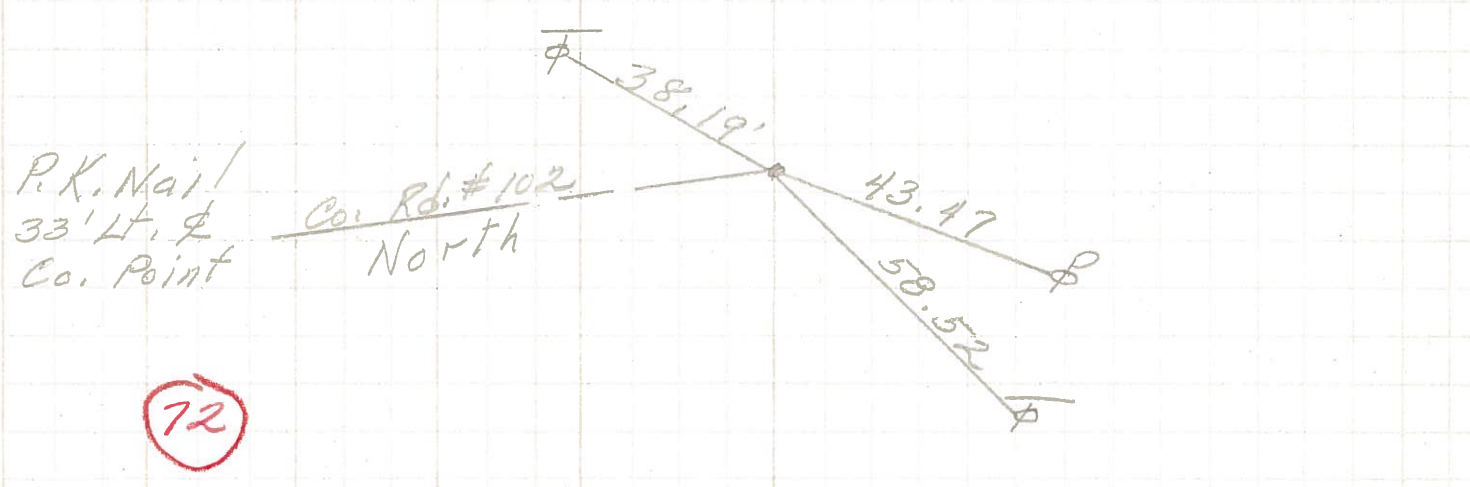
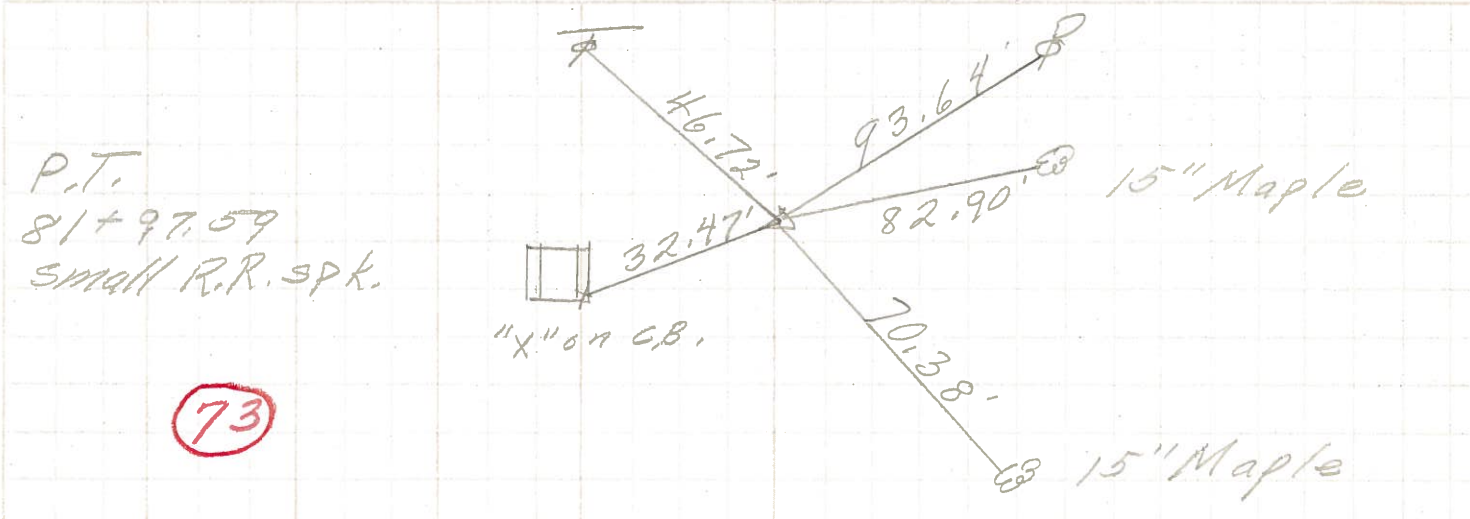
COUNTY Ottawa DATE March 1970

S. R. 163 WEATHER

SEC. Oak Harbor-East TEMP.

DESCRIPTION Sec-4 Salem Twp. JOB NO.

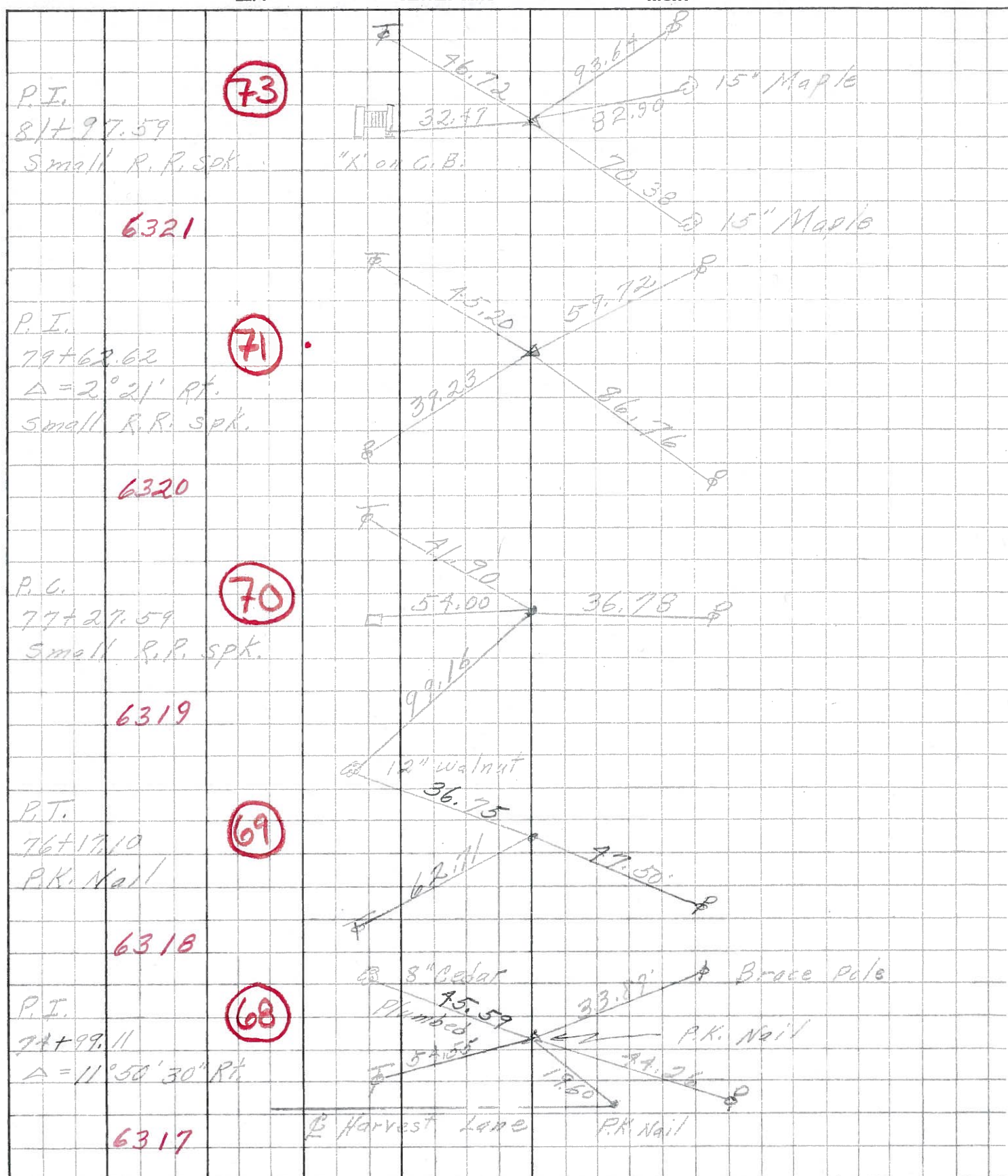
LEFT CENTER LINE RIGHT



PERSONNEL	TITLE	PERSONNEL	TITLE
Schneider		Potts	
Mosser			
Barbour			
Redding			

COUNTY Ottawa DATE Aug. 1968
 S. R. 163 WEATHER _____
 SEC. Oak Harbor East TEMP. _____

DESCRIPTION Ties for Control Points JOB NO. _____



PERSONNEL	TITLE	PERSONNEL	TITLE	COUNTY	DATE	WEATHER	TEMP.
Krabill				Ottawa	Feb. 19, 1967		
Kowaleski				S. R. #163			
Geymann				SEC. E2 (PT)			
Bruggeman							

DESCRIPTION Oak Harbor Mod. Locations EAST JOB NO. _____

