

O.D.O.T. DISTRICT 2 SURVEY OFFICE (USE ONLY)

PERSONNEL

REFERENCE NO. 72

SHEET 41 OF 74

NOTES LEU

DATE 6-28-17

ROUTE SR 163

H.C. NUHFER

WEATHER SUNNY

COUNTY OTTAWA

R.C. CARSON

TEMP. 67°

TOWNSHIP SALEM

SECTION 4

DWG BY JAMES

PID 95757

T 6 N R 15 E

TYPE MONUMENT P.K./WASHER

~~ON SURFACE~~ - BELOW 1.5"

OFFSET Q PAVEMENT 3.3' LT : ~~RT~~

- TO - EDGE PAVEMENT

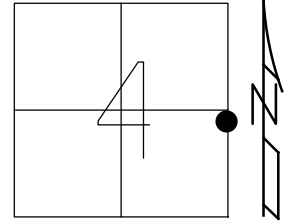
STATION: 806+54

HORZ. DATUM: NAD83 2011

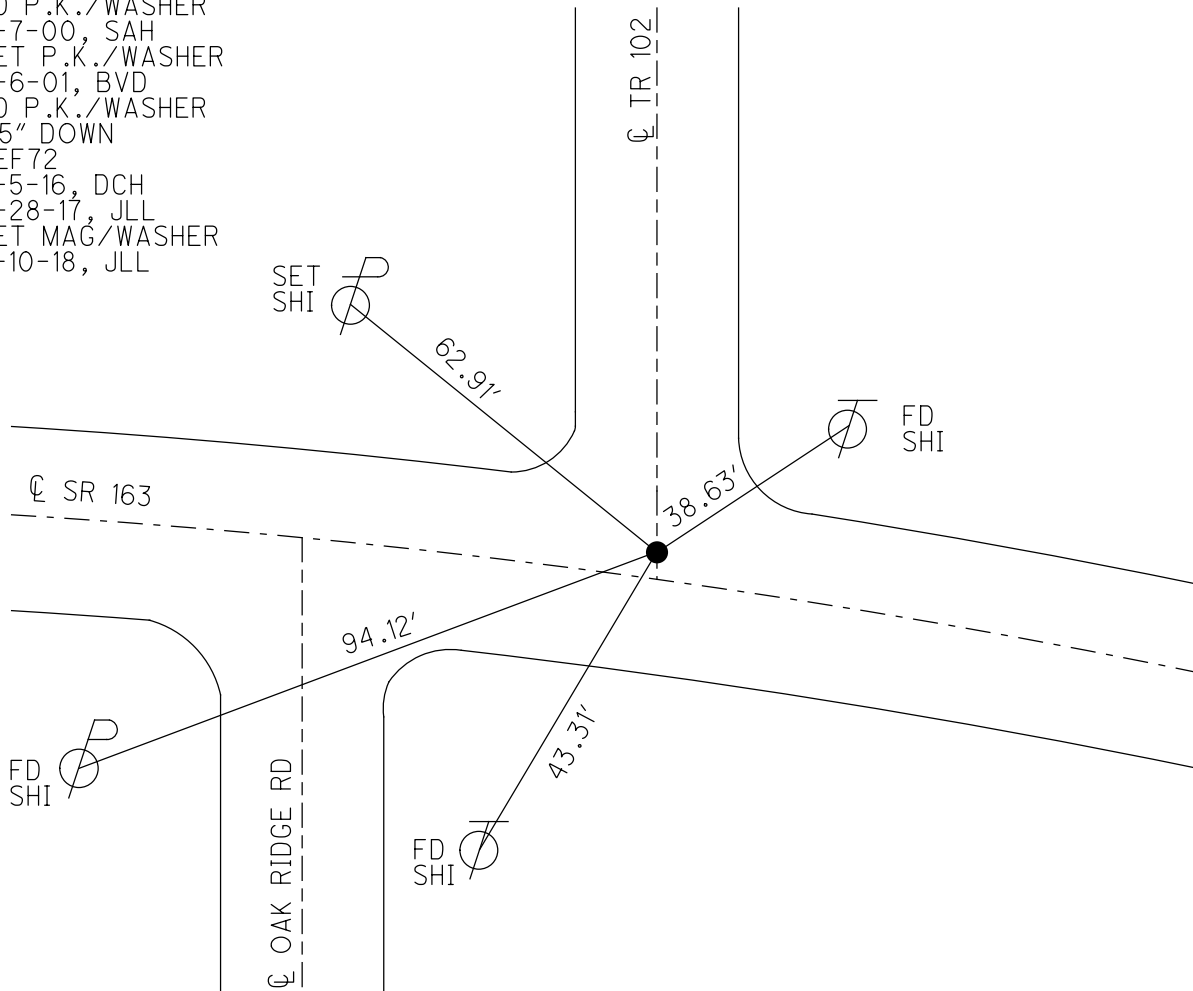
GEOID: NAVD88 2012A

GRID: NORTHING: 671682.707

EASTING: 1797113.610



RECORD:
 FD P.K./WASHER
 8-7-00, SAH
 SET P.K./WASHER
 6-6-01, BVD
 FD P.K./WASHER
 1.5" DOWN
 REF72
 5-5-16, DCH
 6-28-17, JLL
 SET MAG/WASHER
 7-10-18, JLL



O.D.O.T. DISTRICT 2 SURVEY OFFICE

PERSONNEL

REFERENCE NO. 72

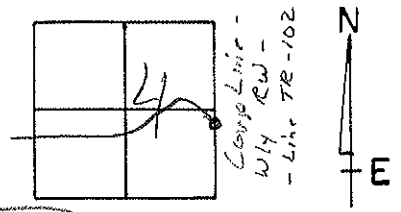
SHEET 31 OF 63

NOTES Cordes
 H.C. Huss
 R.C. Kanger

DATE 8-7-00
 WEATHER Fair
 TEMP. 85 °F

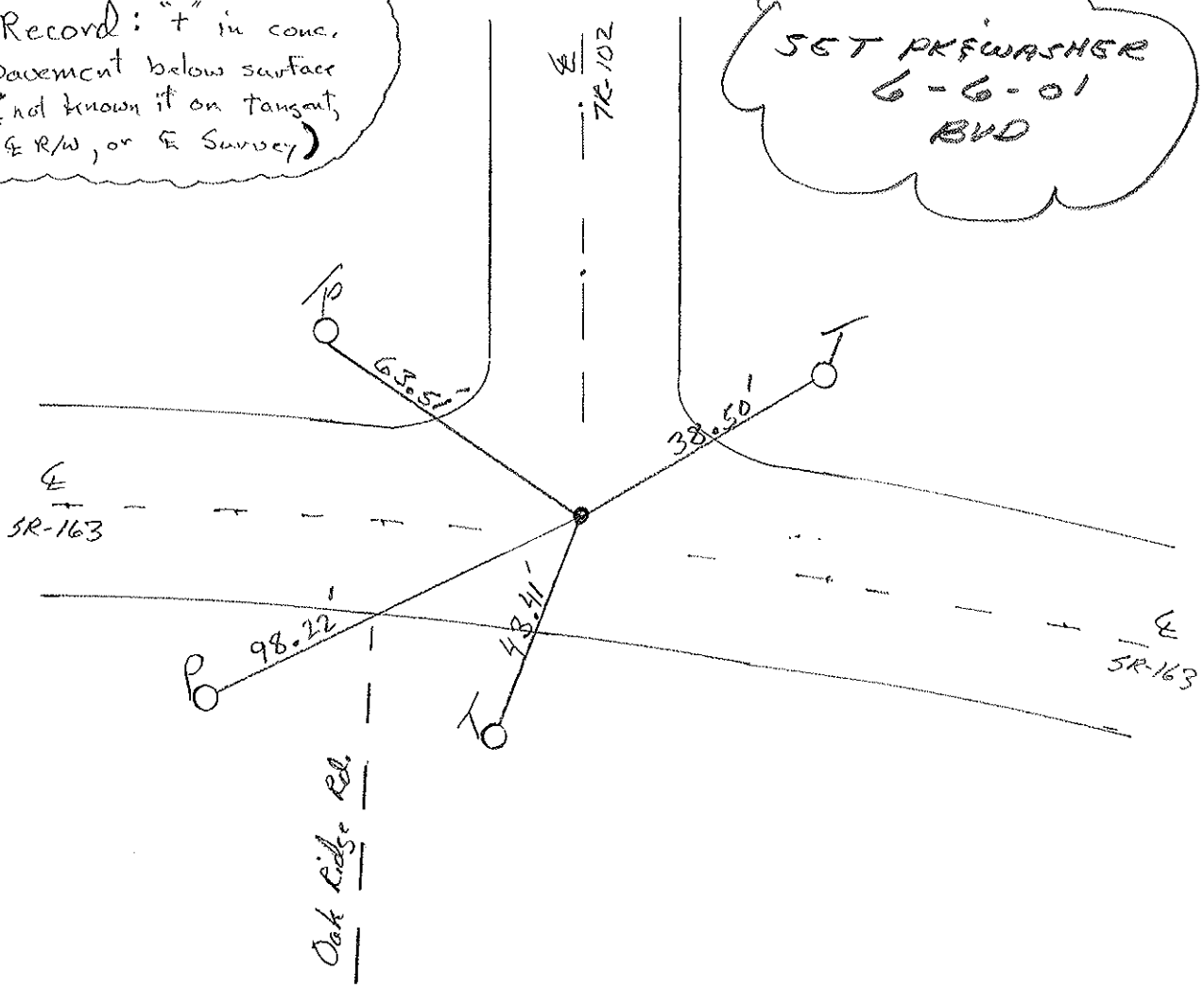
ROUTE 163
 COUNTY Ottawa
 TOWNSHIP Salem
 SECTION 4
T 6 N R 15 E

TYPE MONUMENT PK/W
~~ON SURFACE~~ - ~~BELOW~~ Surface
~~LEFT~~ - ~~PAV~~ / ~~RIGHT~~ 3.3' Lt.
TO EDGE PAVEMENT
 S.L.M. 806+54



Record: "t" in conc. pavement below surface (not known if on tangent, & R/W, or E Survey)

SET PKFWASHER
6-6-01
BVD



O.D.O.T. DISTRICT 2 SURVEY OFFICE

PERSONNEL

REFERENCE NO. 72

SHEET 23 OF

NOTES Cronin

Draw 7/06/88

H.C. Ripple

DATE 5-24-90

R.C. Barkour

WEATHER Cloudy

Geyman

TEMP. 72°

ROUTE #163

COUNTY Ottawa

TOWNSHIP Salem

SECTION 4

T 6 N R 15 E

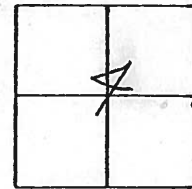
TYPE MONUMENT Set P.K. + Washer

ON SURFACE - BELOW

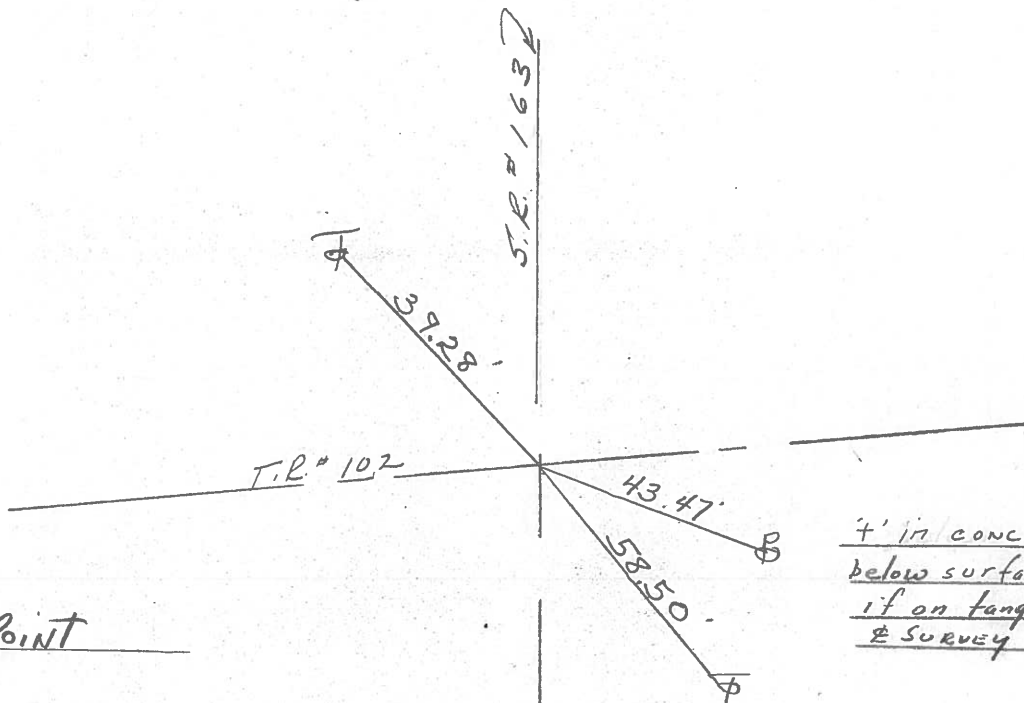
LEFT - ¢ PAV'T. - RIGHT 3.3' LT. ¢

TO EDGE PAVEMENT

S.L.M.



COR POINT

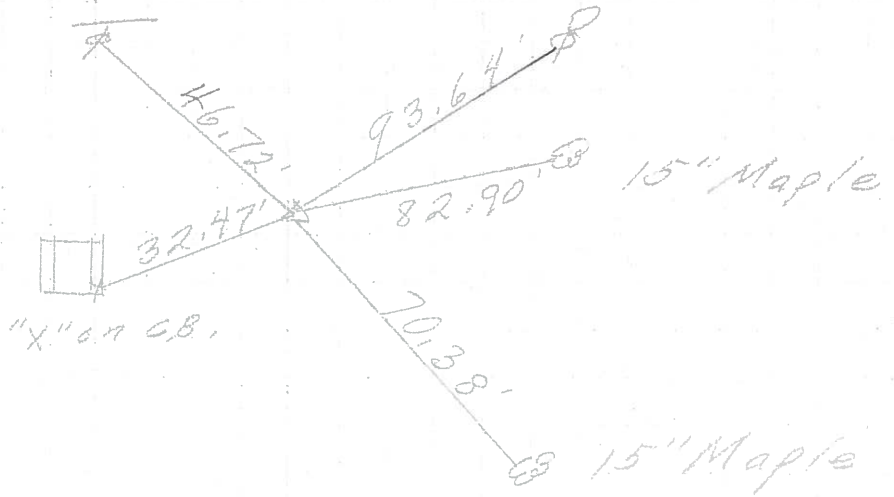


7' IN CONC PAVEMENT
below surface. Not known
if on tang; & R/W or
& SURVEY

| PERSONNEL | TITLE | PERSONNEL | TITLE | COUNTY | DATE |
|-------------|------------------|-------------|-------|----------------------|------------|
| | | | | Ottawa | March 1970 |
| | | | | S. R. 163 | WEATHER |
| | | | | SEC. Oak Harbor-East | TEMP. |
| DESCRIPTION | sec-4 solem Twp. | | | JOB NO. | |
| | LEFT | CENTER LINE | RIGHT | | |

P.T.
81+97.59
small R.R. spk.

73



P.K. Nail
33' Lt. &
Co. Point

Co. Rd. #102
North

72



P.I.
79+62.62
Δ = 2° 21' RT.
small R.R. spk.

71

