

O.D.O.T. DISTRICT 2 SURVEY OFFICE (USE ONLY)

PERSONNEL

REFERENCE NO. 73

SHEET 42 OF 74

NOTES NUHFER DATE 7-11-17
 H.C. LEU WEATHER SUNNY
 R.C. CARSON TEMP. 85°

ROUTE SR 163
 COUNTY OTTAWA
 TOWNSHIP SALEM
 SECTION 3

DWG BY JAMES PID 95757

T 6 N R 15 E

TYPE MONUMENT P.K./WASHER

ON SURFACE - ~~BELOW~~ ON

OFFSET \varnothing PAVEMENT ON LT : RT

11.4' TO LT EDGE PAVEMENT

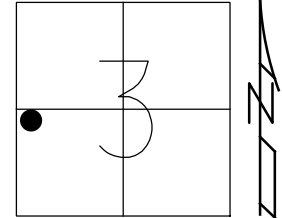
STATION: 807+61

HORZ.DATUM: NAD83 2011

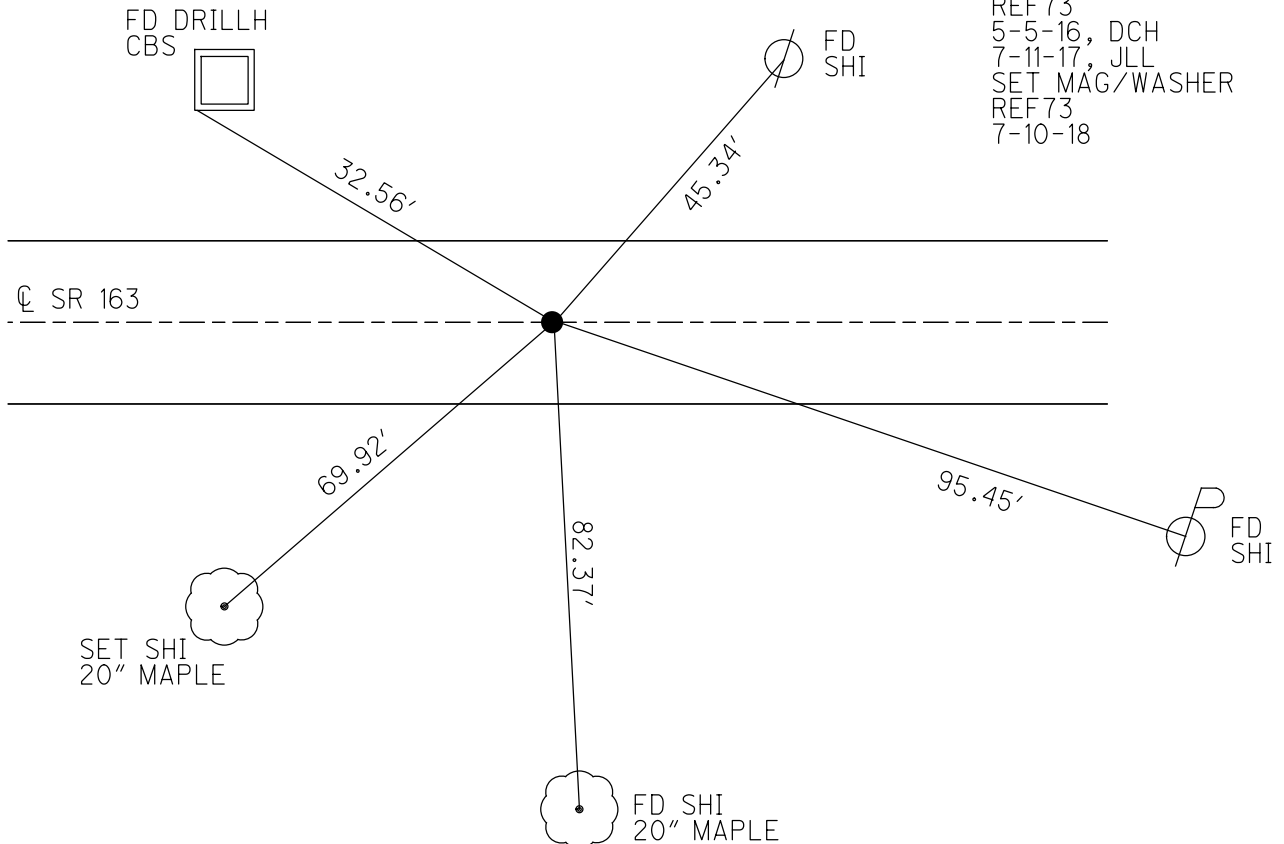
GEOID: NAVD88 2012A

GRID: NORTHING: 671657.057

EASTING: 1797219.830



RECORD: P.T.
 STA 81+97.59
 FD P.K./WASHER
 8-8-00, BVD
 SET P.K./WASHER
 6-6-01, BVD
 FD P.K./WASHER
 1.5" DOWN
 REF73
 5-5-16, DCH
 7-11-17, JLL
 SET MAG/WASHER
 REF73
 7-10-18



O.D.O.T. DISTRICT 2 SURVEY OFFICE

PERSONNEL

REFERENCE NO. 73

SHEET 32 OF 63

NOTES Cordes

H.C. Vandusen

R.C. Karger

Brown

DATE 8-8-00

WEATHER Fair

TEMP. 75° F

ROUTE 163

COUNTY Ottawa

TOWNSHIP Salem

SECTION 3

T6 N R 15 E

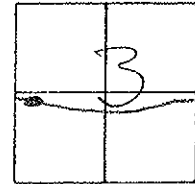
TYPE MONUMENT PK/W

ON SURFACE - ~~BELOW~~ surface

~~LEFT~~ - (E PAV'T) - ~~RIGHT~~ on E

11.7' TO Lt EDGE PAVEMENT

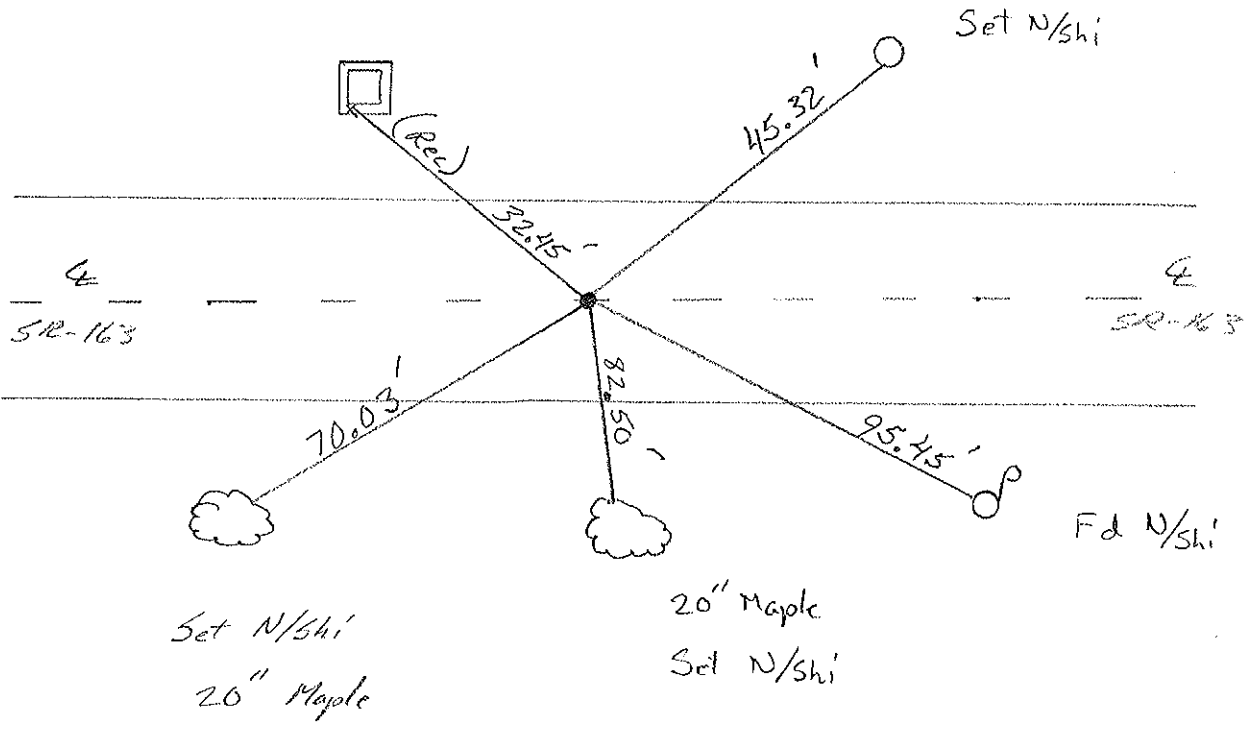
S.L.M. 807+61



SET PK & WASHER
 6-6-01
 BVD

Record:
 P.T.
 81+97.59

4" Cut on C.B



O.D.O.T. DISTRICT 2 SURVEY OFFICE

PERSONNEL

REFERENCE NO. 73

SHEET 24 OF

NOTES Cronin

DRAW 7/06/88

H.C. Ripple

DATE 5-24-90

R.C. Barbour

WEATHER cloudy

Geyman

TEMP. 72°

ROUTE #163

COUNTY Ottawa

TOWNSHIP Salem

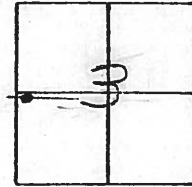
SECTION 5

T. 6 N. R. 15 E

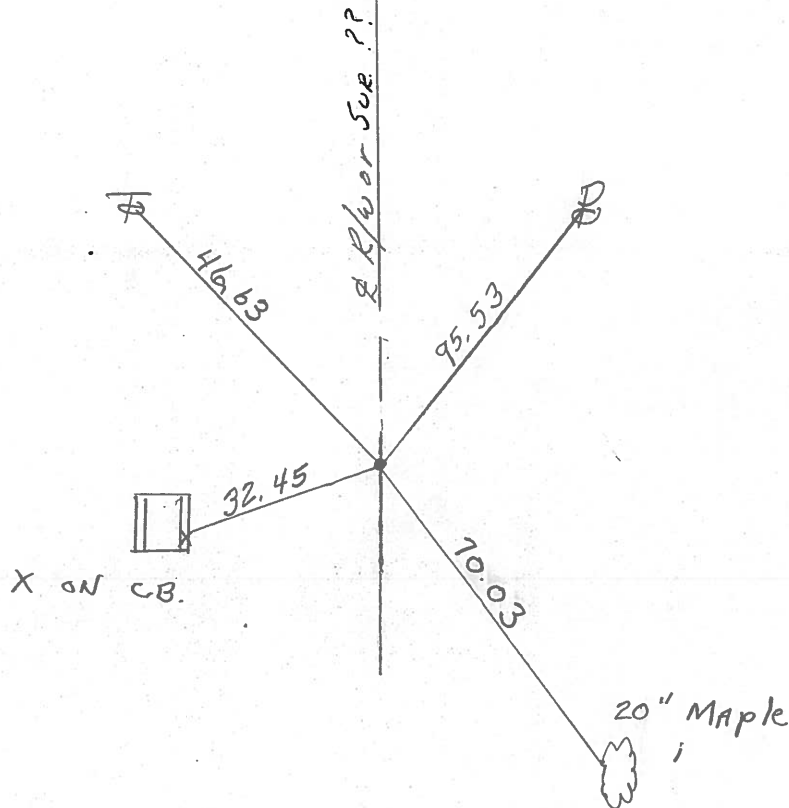
TYPE MONUMENT set PK + Washcr
 ON SURFACE - BELOW small R/c spike 3" down
 LEFT - € PAV'T. - RIGHT

TO EDGE PAVEMENT

S.L.M. Sta. 81+97.59



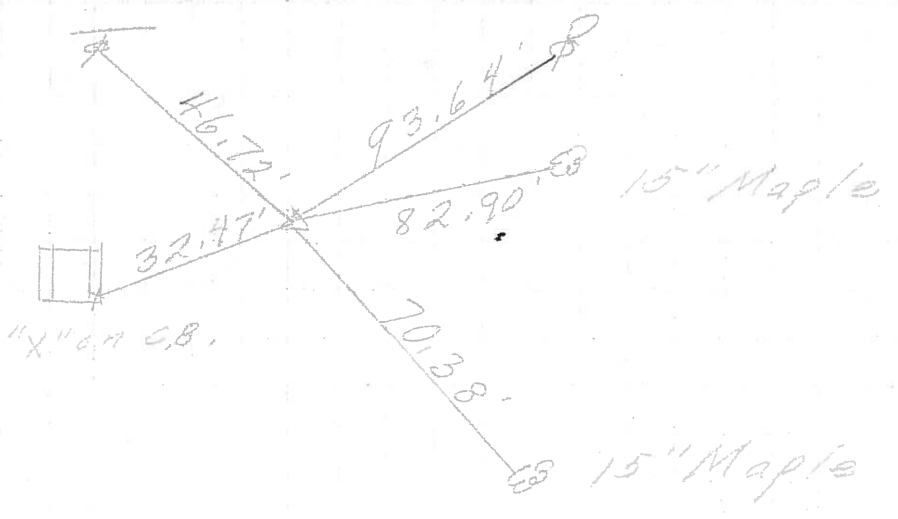
P.T



PERSONNEL	TITLE	PERSONNEL	TITLE	COUNTY	DATE
				Ottawa	March 1970
				S. R. 163	WEATHER
				SEC. Oak Harbor-East	TEMP.
DESCRIPTION	Sec-4 Solem Twp.			JOB NO.	
	LEFT	CENTER LINE	RIGHT		

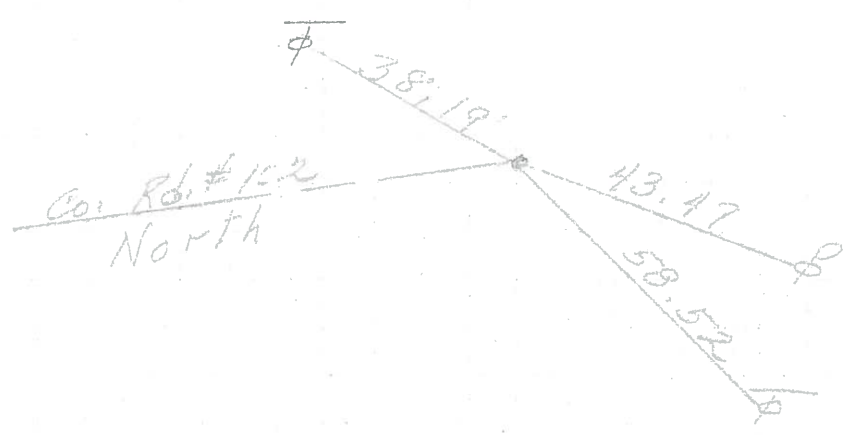
P.T.
81+97.59
Small R.R. spk.

73



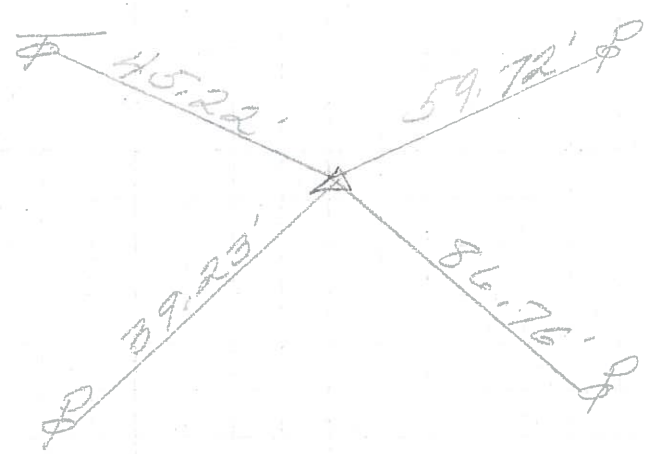
P.K. Nail
33' Lt. &
Co. Point

72



P.I.
79+52.62
Δ = 2° 21' RT.
Small R.R. spk.

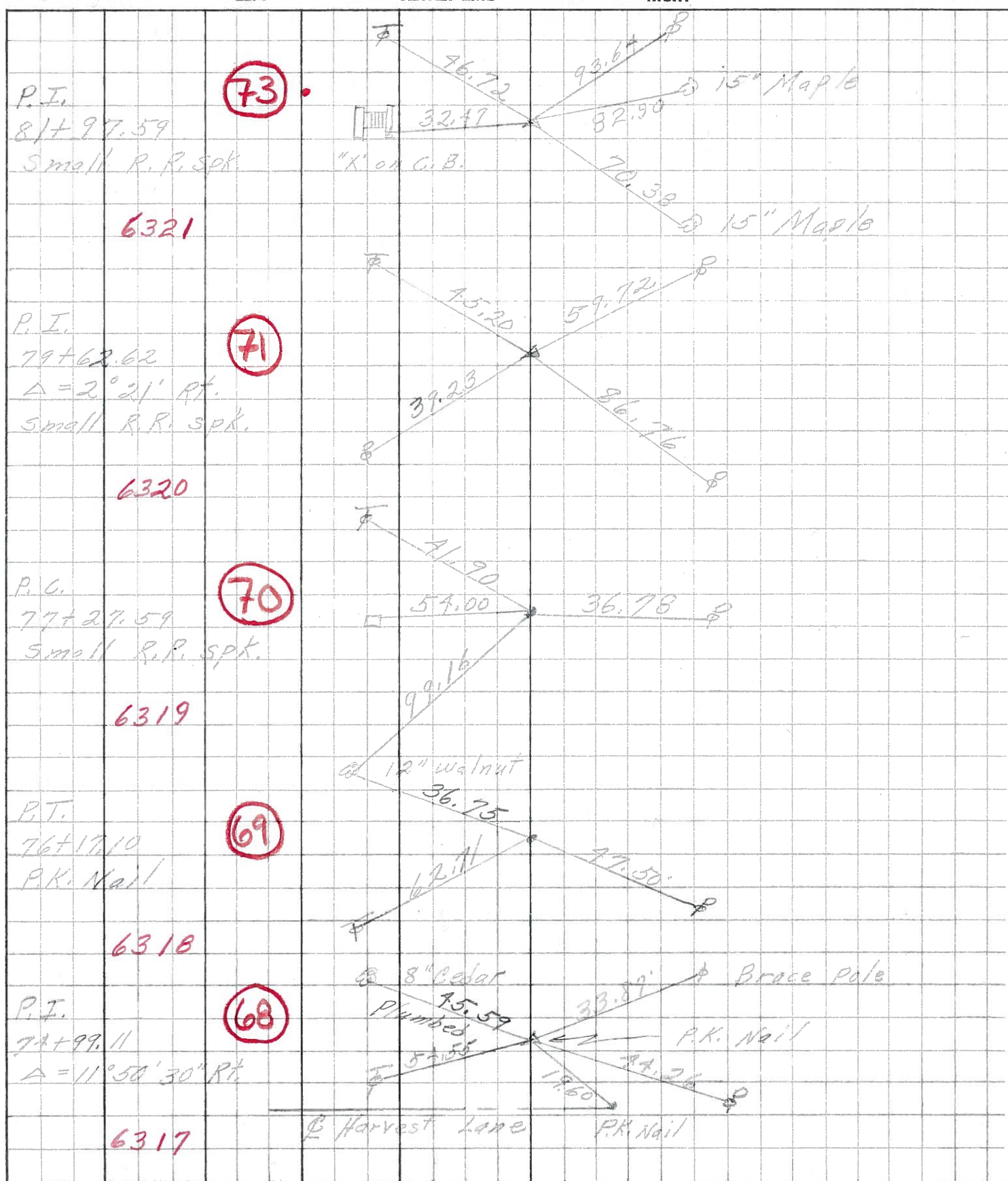
71



PERSONNEL TITLE PERSONNEL TITLE
 Schneider _____ Potts _____
 Mosser _____
 Barbour _____
 Redding _____

COUNTY Ottawa DATE Aug. 1968
 S. R. 163 WEATHER _____
 SEC. Oak Harbor East TEMP. _____

DESCRIPTION Ties for Control Points JOB NO. _____



PERSONNEL	TITLE	PERSONNEL	TITLE	COUNTY	DATE	WEATHER	TEMP.
Krabill				Ottawa	Feb. 19, 1967		
Nowaleski				S. R. #163			
Geymann							
Bruggeman				SEC. E2 (PT)			

DESCRIPTION Oak Harbor Map Locations EAST JOB NO. _____

