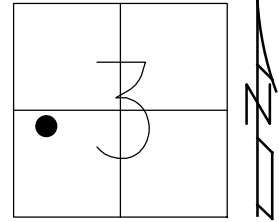


O.D.O.T. DISTRICT 2 SURVEY OFFICE (USE ONLY)

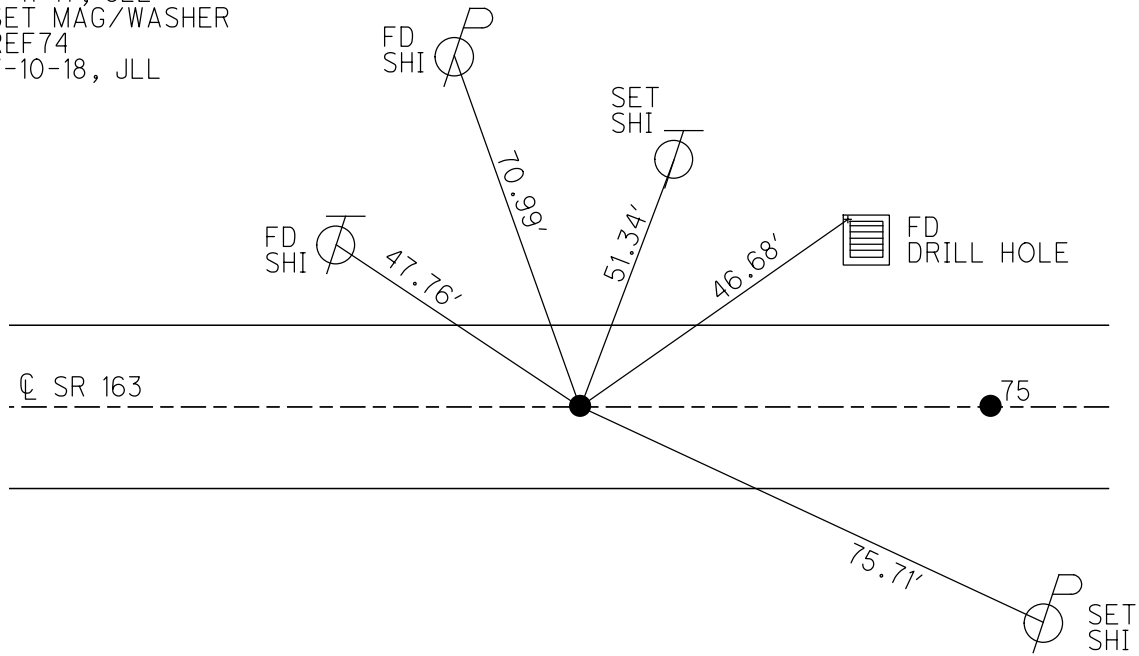
PERSONNEL _____ REFERENCE NO. 74 SHEET 43 OF 74
 NOTES NUHFER DATE 7-11-17 ROUTE SR 163
 H.C. LEU WEATHER SUNNY COUNTY OTTAWA
 R.C. CARSON TEMP. 85° TOWNSHIP SALEM
 SECTION 3
 DWG BY JAMES PID 95757 T 6 N R 15 E

TYPE MONUMENT P.K. SHANK
 ON SURFACE - ~~BELOW~~ ON
 OFFSET 0.4' ~~LT~~ : RT
11.5' TO LT EDGE PAVEMENT
 STATION: 819+36



HORIZ.DATUM: NAD83 2011 GEOID: NAVD88 2012A
 GRID: NORTHING: 671410.510 EASTING: 1798365.557

RECORD: P.C.
 STA.93+69.87
 FD P.K./WASHER
 8-8-00, BVD
 SET P.K./WASHER
 6-6-01, BVD
 FD P.K. SHANK
 REF74
 5-5-16, DCH
 7-11-17, JLL
 SET MAG/WASHER
 REF74
 7-10-18, JLL



DIST. 74-75 = 68.33'

O.D.O.T. DISTRICT 2 SURVEY OFFICE

PERSONNEL

REFERENCE NO. 74

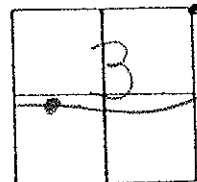
SHEET 33 OF 63

NOTES Brown
 H.C. Van Dusen
 R.C. Karger
Cordes P

DATE 8-8-00
 WEATHER Fair
 TEMP. +75°F

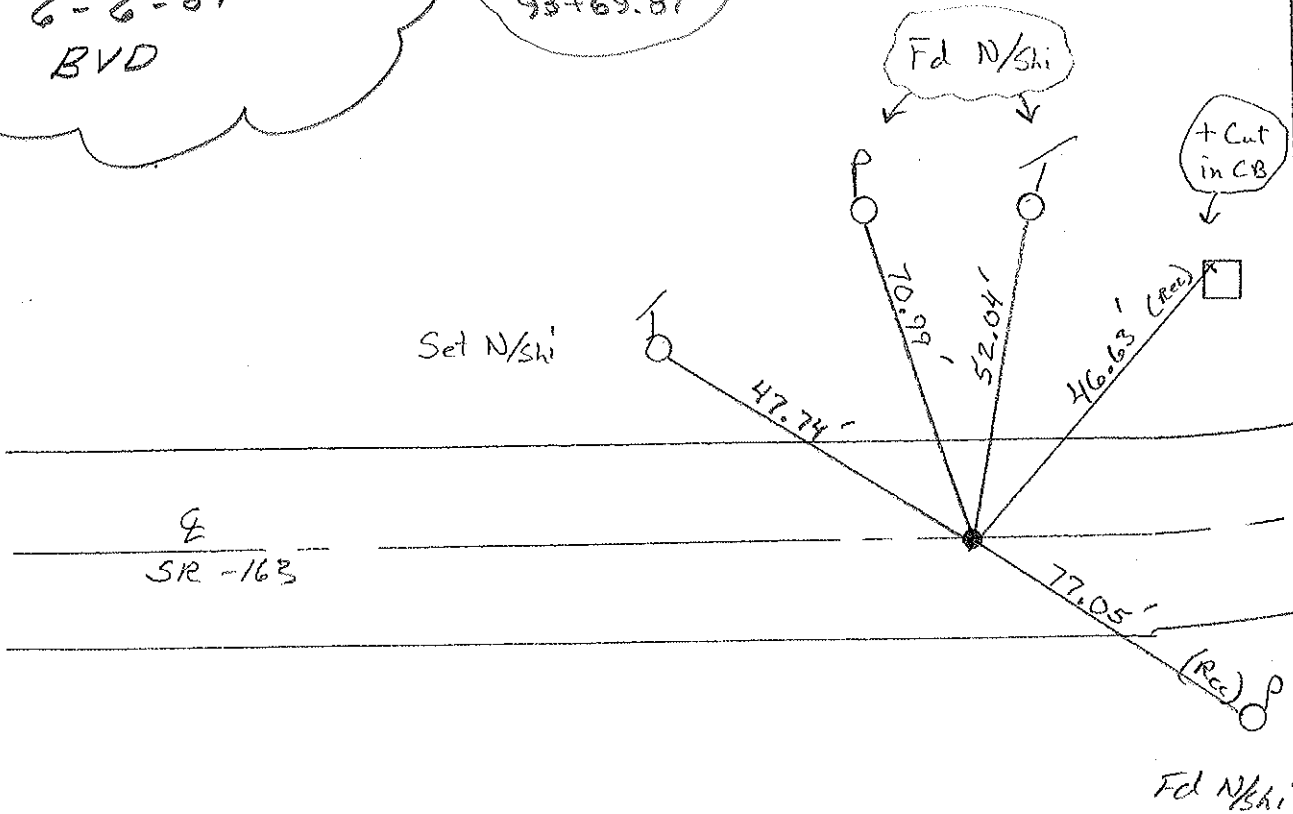
ROUTE SR-163
 COUNTY Ottawa
 TOWNSHIP Salem
 SECTION 3
T 6 N R 15 E

TYPE MONUMENT PK/w
~~ON SURFACE~~ - ~~BELOW~~ Surface
~~PAV'T~~ - ~~RIGHT~~
11.7' TO Lt. EDGE PAVEMENT
 S.L.M. 819+36



SET PK WASHER
 6-6-01
 BVD

Record:
 P.C.
 93+69.87



O.D.O.T. DISTRICT 2 SURVEY OFFICE

PERSONNEL

NOTES

H.C.

R.C.

REFERENCE NO. 74

DRAWN 7/06/88

DATE 5-24-90

WEATHER cloudy

TEMP. 72°

SHEET 25 OF

ROUTE # 163

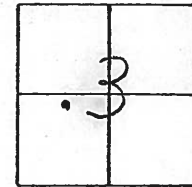
COUNTY Ottawa

TOWNSHIP Salem

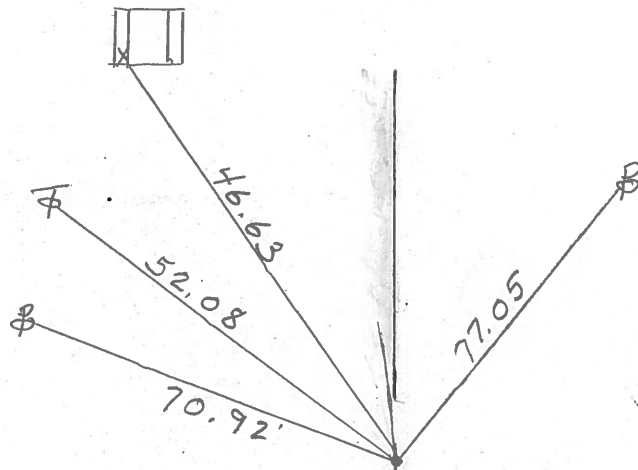
SECTION 3

T. 6 N. R. 15 E.

TYPE MONUMENT Set P.K. + Washer
ON SURFACE - BELOW SMALL P/R spike 3" down
LEFT - & PAV'T. - RIGHT
TO EDGE PAVEMENT
S.L.M. Sta. 93+69.87



pc.



PERSONNEL TITLE PERSONNEL TITLE

COUNTY Ottawa DATE March 1972

S. R. 163 WEATHER

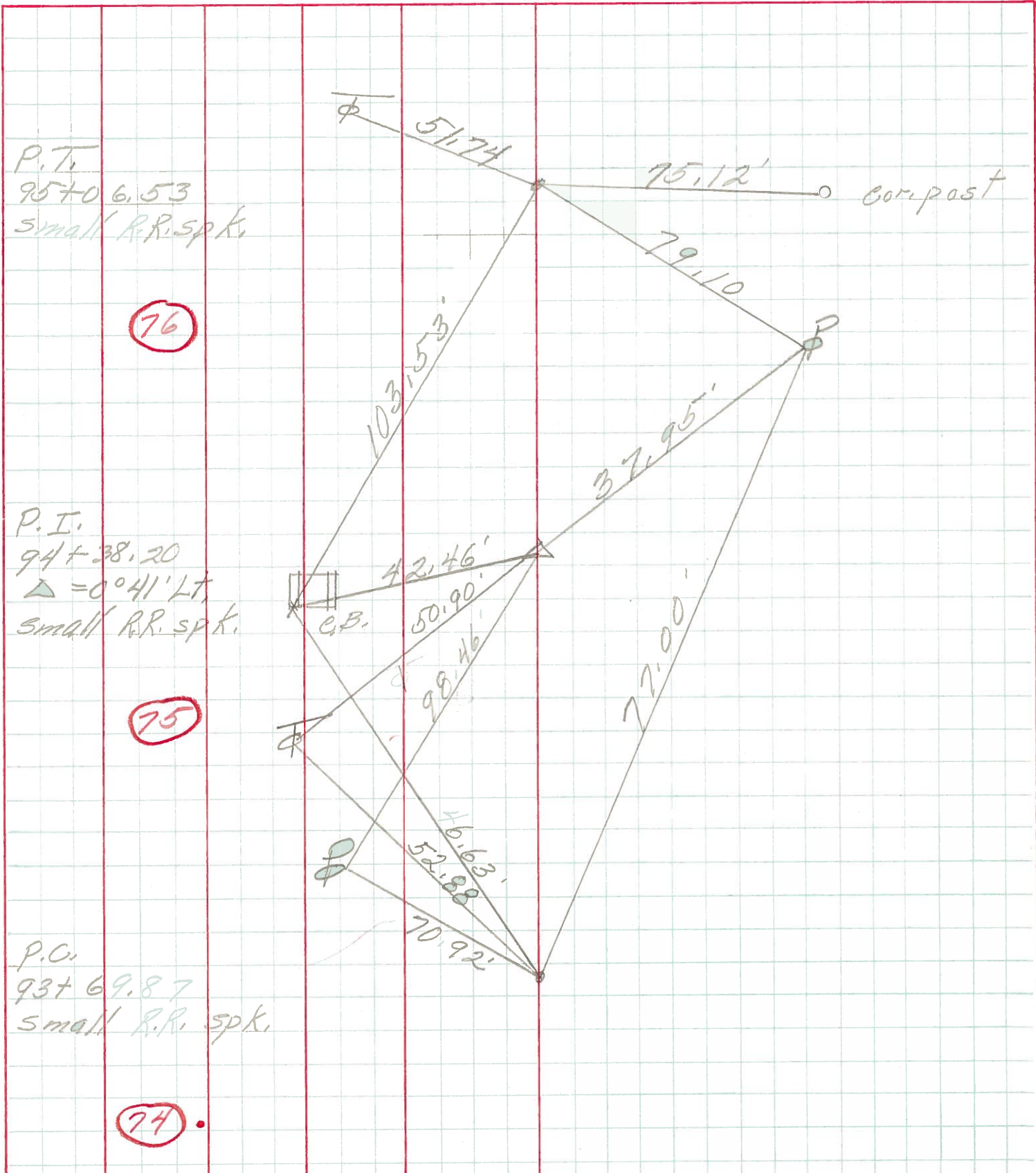
SEC. Oak Harbor-East TEMP.

DESCRIPTION Sec 3 Salem Twp. JOB NO.

LEFT

CENTER LINE

RIGHT



P.T.
95+06.53
small R.R. spk.

76

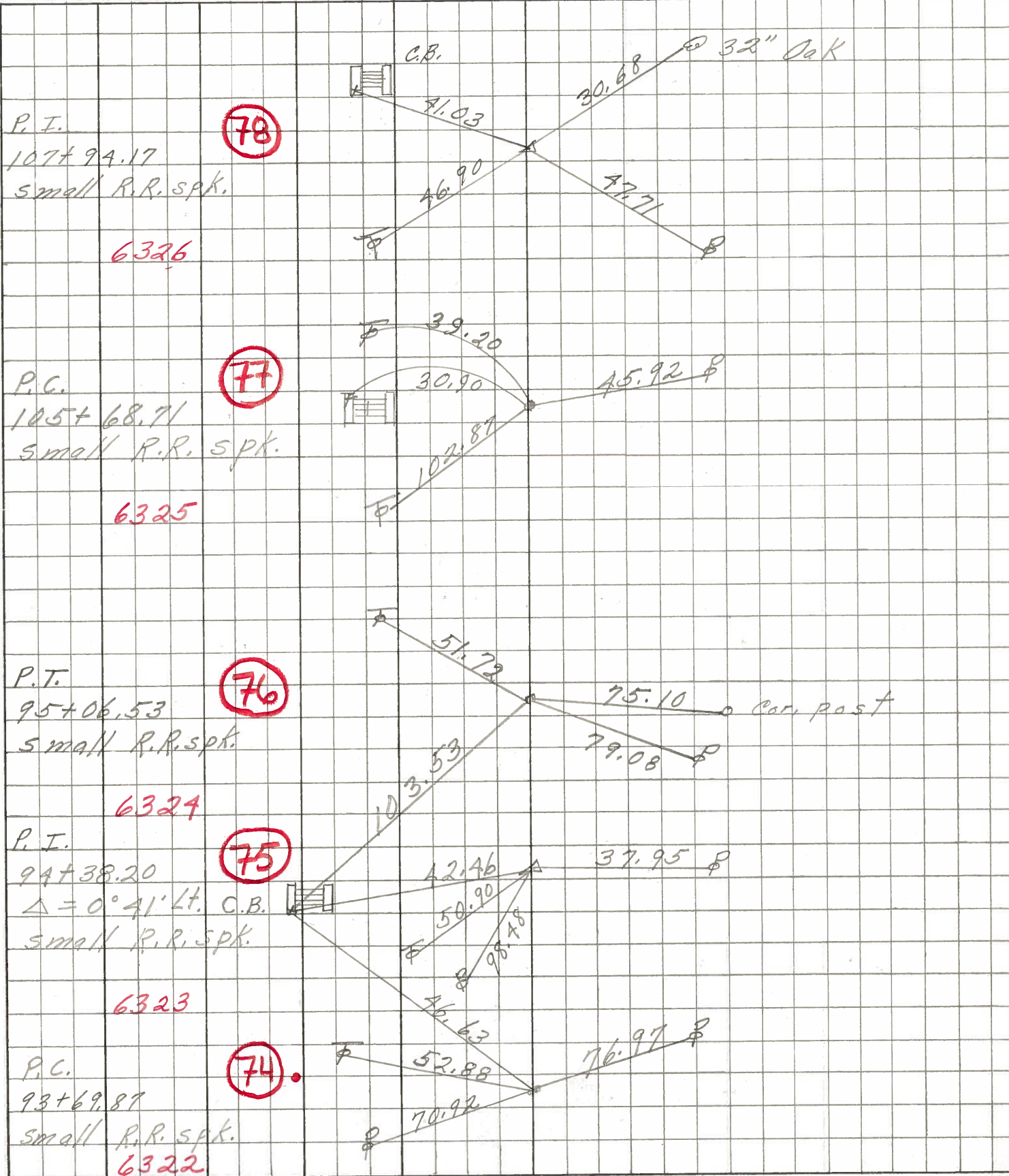
P.I.
94+38.20
△ = 0°41' Lt.
small R.R. spk.

75

P.C.
93+69.87
small R.R. spk.

74

PERSONNEL	TITLE	PERSONNEL	TITLE	COUNTY	DATE
Schneider		Potts		0 40	Aug 6
Mosser				S. R. 0	WEATHER
Barbour				SEC. 1 a 60	TEMP.
Redding					JOB NO.
DESCRIPTION				Ties for Control P 5	
	LEFT	CENTER LINE	RIGHT		



PERSONNEL	TITLE	PERSONNEL	TITLE	COUNTY	DATE	WEATHER	TEMP.
Xrabikh				Ottawa	Feb. 19, 1969		
Kowaleski				S. R. # 163			
Geyman				SEC. E-2 (PT)			
Brugeman							

DESCRIPTION Oak Harbor Mtn. Locations EAST JOB NO. _____

LEFT CENTER LINE RIGHT

