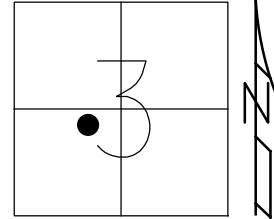


O.D.O.T. DISTRICT 2 SURVEY OFFICE (USE ONLY)

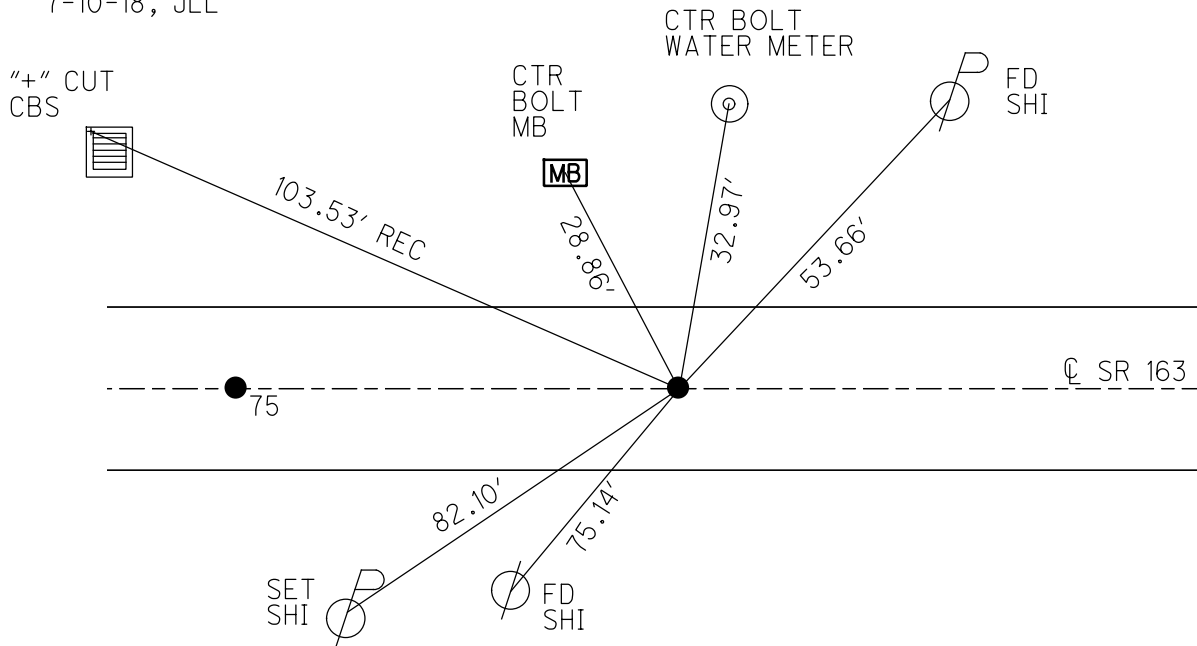
PERSONNEL _____ REFERENCE NO. 76 SHEET 45 OF 74
 NOTES CORDES DATE 8-8-00 ROUTE SR 163
 H.C. VANDUSEN WEATHER FAIR COUNTY OTTAWA
 R.C. KARGEN TEMP. 78° TOWNSHIP SALEM
 BROWN SECTION 3
 DWG BY JAMES PID 95757 T 6 N R 15 E

TYPE MONUMENT P.K./WASHER
 ON SURFACE - ~~BELOW~~ ON
 OFFSET \odot PAVEMENT ON LT : RT
11.5' TO RT EDGE PAVEMENT
 STATION: 820+69



HORZ.DATUM: NAD83 2011 GEOID: NAVD88 2012A
 GRID: NORTHING: 671382.572 EASTING: 1798499.429

RECORD: P.T.
 STA 95+06.53
 FD P.K./WASHER
 8-8-00, BVD
 SET P.K./WASHER
 6-6-01, BVD
 FD P.K./WASHER
 3" BELOW
 REF76
 5-5-16, DCH
 SET MAG/WASHER
 7-10-18, JLL



DIST. 75-76 = 68.38'

O.D.O.T. DISTRICT 2 SURVEY OFFICE

PERSONNEL _____

REFERENCE NO. 76

SHEET 35 OF 63

NOTES Cordas

H.C. Van Dusen

R.C. Karger

Brown P

DATE 8-8-00

WEATHER Fair

TEMP. +78°F

ROUTE SR-163

COUNTY Ottawa

TOWNSHIP Salem

SECTION 3

T.6 N.R. 15 E

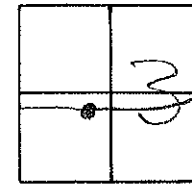
TYPE MONUMENT PK/W

ON SURFACE ~~BELOW~~ Surface

~~LEFT - C PAV'T - RIGHT~~ ♀

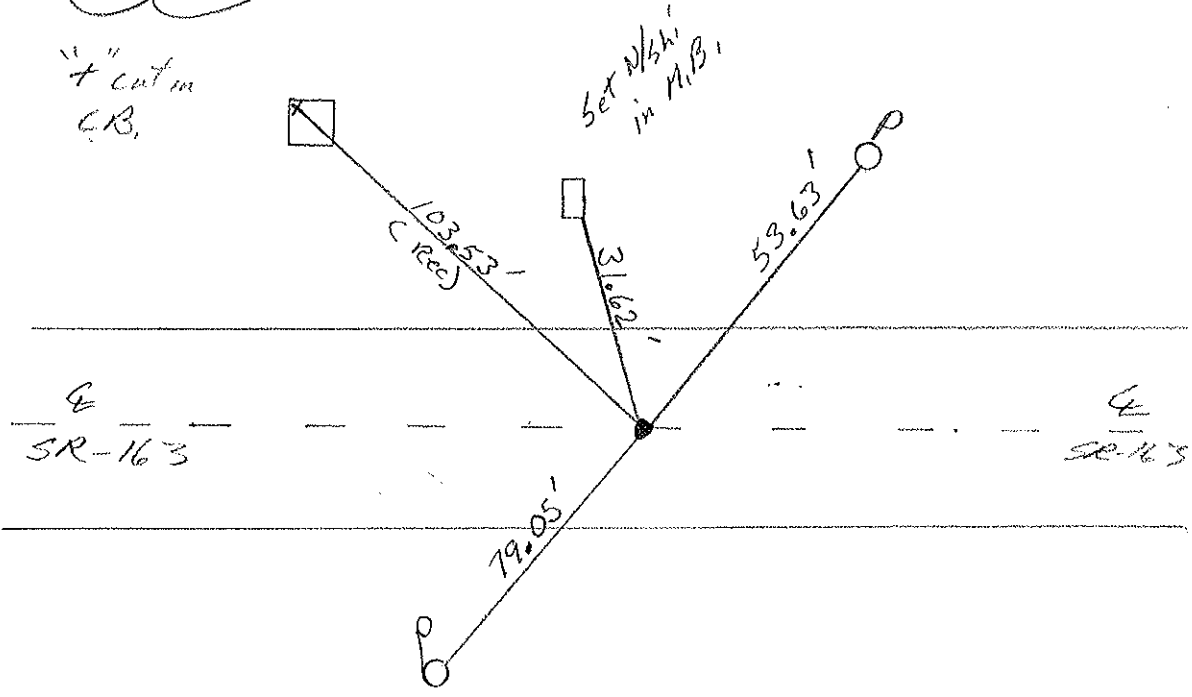
11.5' TO Rt. EDGE PAVEMENT

S.L.M. 820169



SET PK & WASHER
 6-6-01
 BVD

Recovered:
 P.T.
 95+06.53



O.D.O.T. DISTRICT 2 SURVEY OFFICE

PERSONNEL

REFERENCE NO. -76

SHEET 27 OF

NOTES Cronin

DRAWN 7/06/88

H.C. Ripple

DATE 5-24-90

R.C. BARBOUR

WEATHER Cloudy

Geyman

TEMP. 75°

ROUTE #163

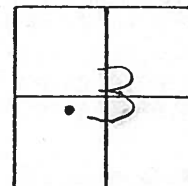
COUNTY Ottawa

TOWNSHIP Salem

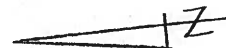
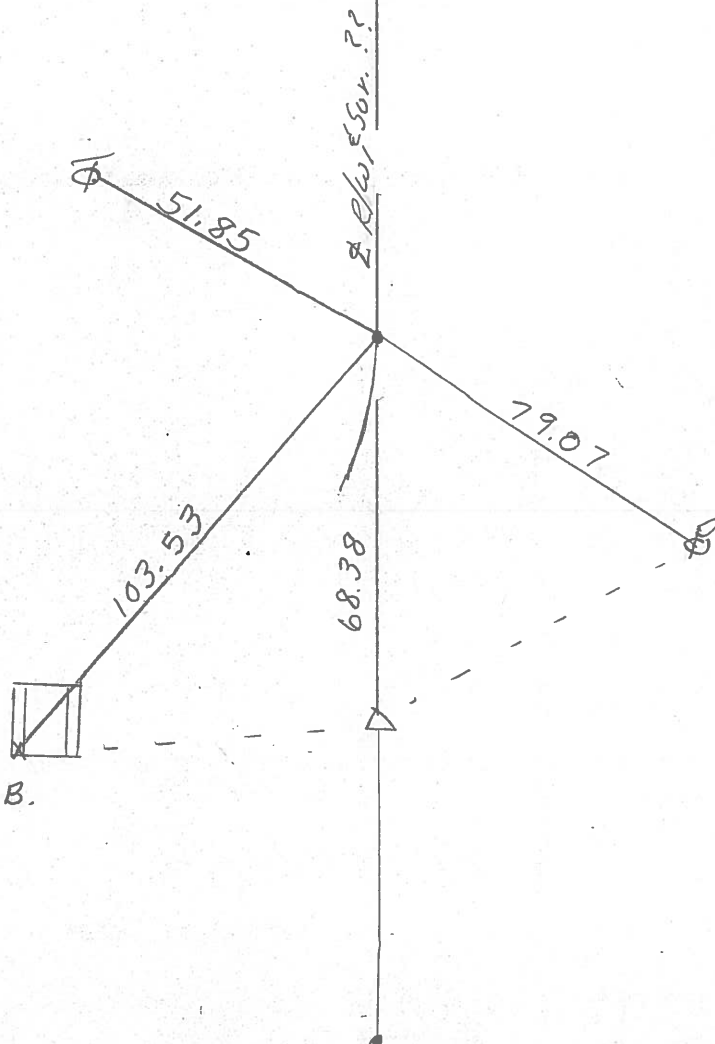
SECTION 3

T 6 N R 15 E

TYPE MONUMENT Set P.K. + Washer
 ON SURFACE - BELOW Small R/R spike 3" down
 LEFT - ☉ PAV'T. - RIGHT
 TO EDGE PAVEMENT
 S.L.M. Sta. 95+06.53



P.T.



PERSONNEL TITLE PERSONNEL TITLE

COUNTY Ottawa DATE March 1972

S. R. 163 WEATHER

SEC. Oak Harbor-East TEMP.

DESCRIPTION Sec 3 Salem Twp. JOB NO.

LEFT

CENTER LINE

RIGHT

P.T.
95+06.53
Small R.R. spk.

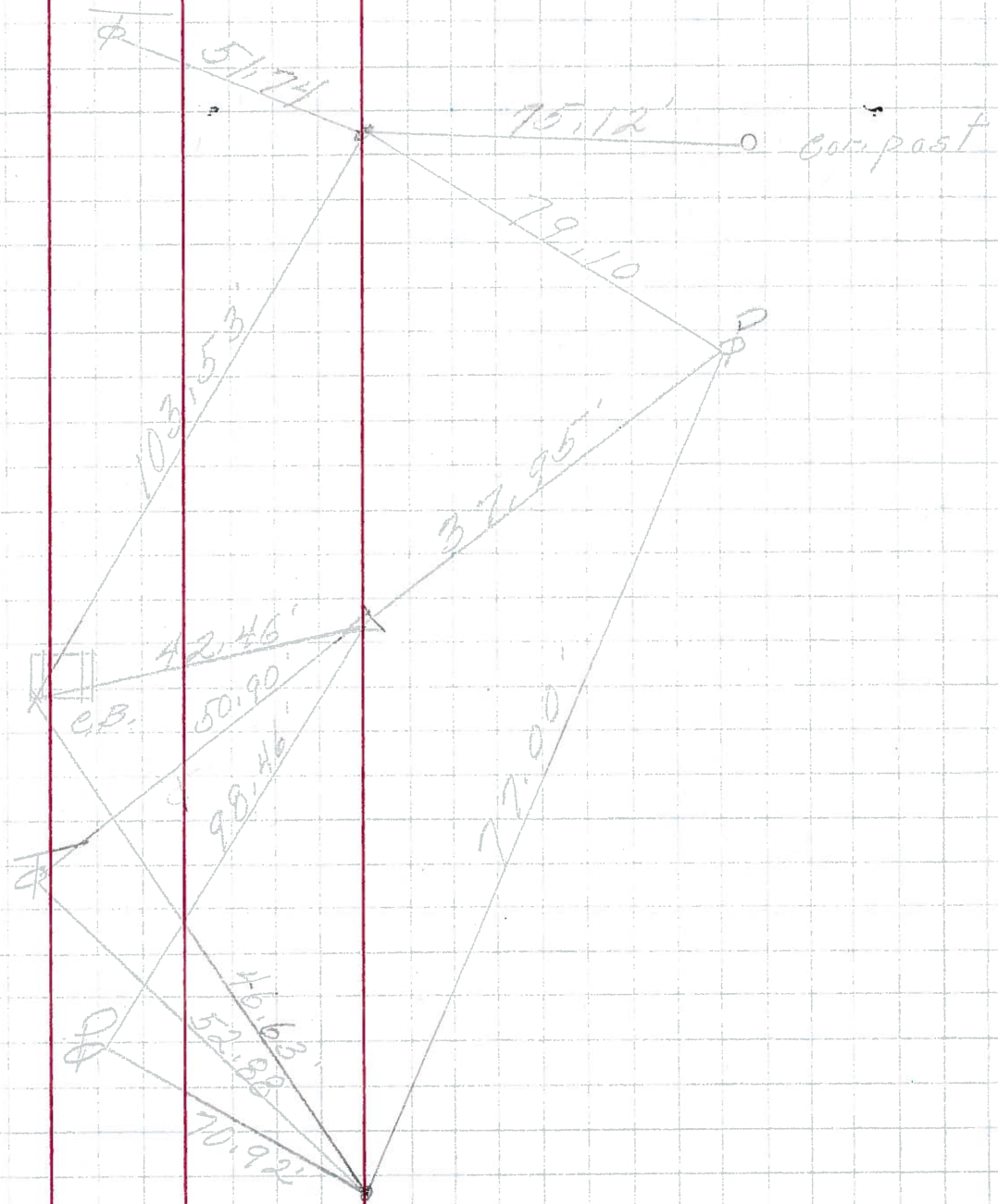
76

P.I.
94+38.20
 $\Delta = 0^{\circ}41'LT$
Small R.R. spk.

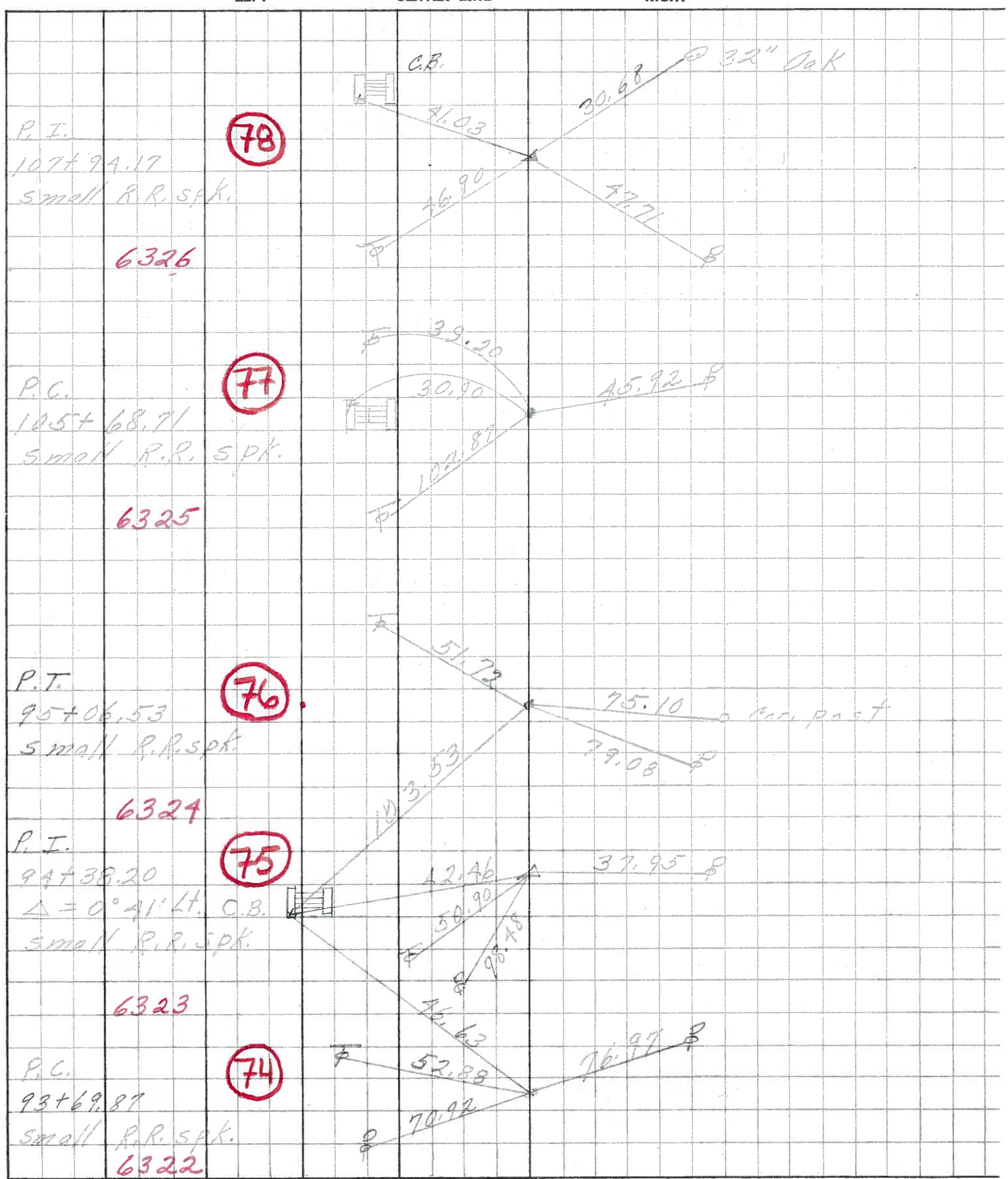
75

P.C.
93+69.87
Small R.R. spk.

74



| | | | | | |
|------------------|--------------------------------|--------------|-------|-----------------------------|------------------|
| PERSONNEL | TITLE | PERSONNEL | TITLE | COUNTY | DATE |
| <u>Schneider</u> | | <u>Potts</u> | | <u>Ottawa</u> | <u>Aug. 1968</u> |
| <u>Mosser</u> | | | | S. R. <u>163</u> | WEATHER |
| <u>Barbour</u> | | | | SEC. <u>Oak Harbor-East</u> | TEMP. |
| <u>Redding</u> | | | | | |
| DESCRIPTION | <u>Ties for Control Points</u> | | | | JOB NO. |



| PERSONNEL | TITLE | PERSONNEL | TITLE | COUNTY | DATE | WEATHER | TEMP. |
|--|-------|-------------|-------|---------------|---------------|---------|---------|
| Xrabill | | | | Ottawa | Feb. 19, 1964 | | |
| Kowaleski | | | | S. R. # 163 | | | |
| Geyman | | | | | | | |
| Bruggeman | | | | SEC. E-2 (PT) | | | |
| DESCRIPTION Oak Harbor Mtn. Locations East | | | | | | | |
| | LEFT | CENTER LINE | RIGHT | | | | JOB NO. |

