

O.D.O.T. DISTRICT 2 SURVEY OFFICE (USE ONLY)

PERSONNEL

REFERENCE NO. 77

SHEET 46 OF 74

NOTES NUHFER  
 H.C. LEU  
 R.C. CARSON

DATE 7-12-17  
 WEATHER SUNNY  
 TEMP. 80°

ROUTE SR 163  
 COUNTY OTTAWA  
 TOWNSHIP SALEM  
 SECTION 3  
 T 6 N R 15 E

DWG BY JAMES PID 95757

TYPE MONUMENT SM RR SPIKE

~~ON SURFACE~~ - BELOW 5"

OFFSET  $\odot$  PAVEMENT 1' LT : ~~RT~~

- TO - EDGE PAVEMENT

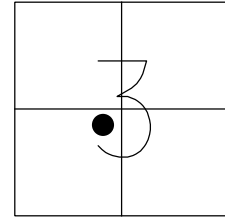
STATION: 833+44±

HORZ.DATUM: NAD83 2011

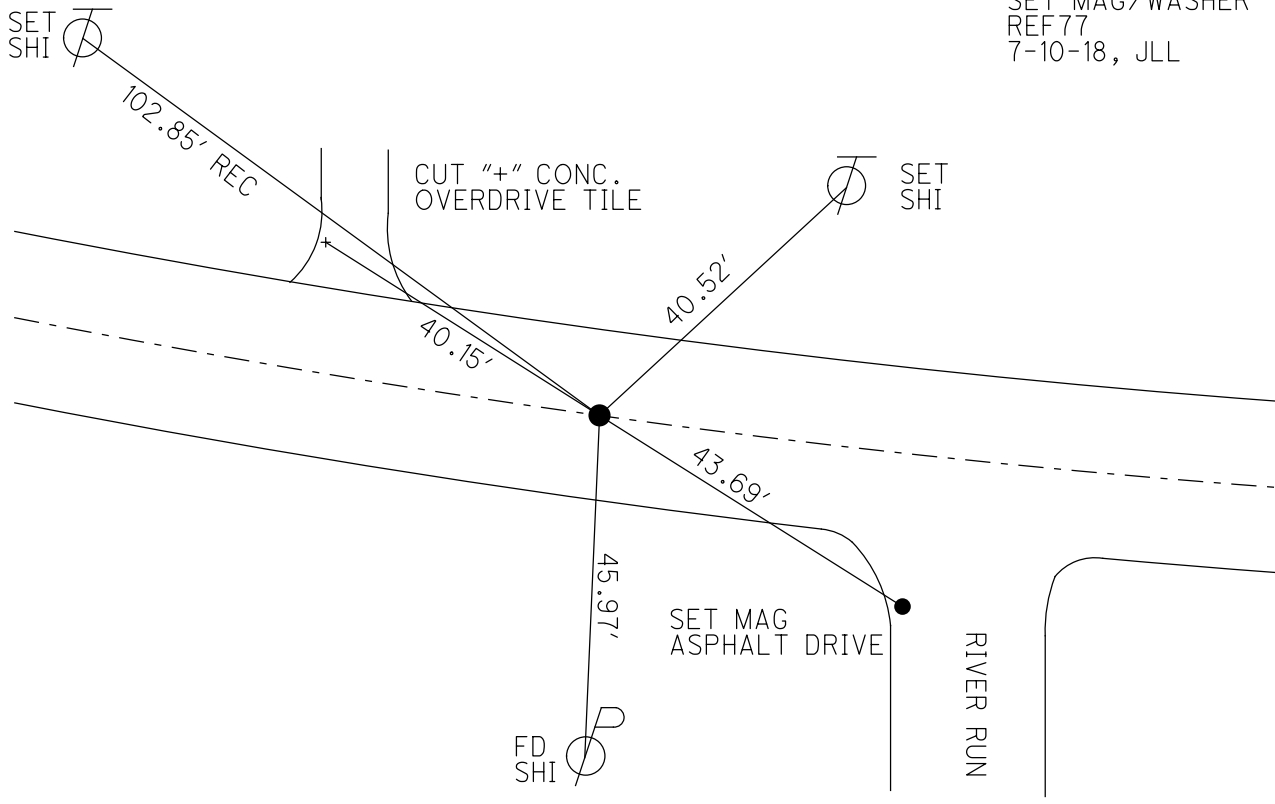
GEOID: NAVD88 2012A

GRID: NORTHING: 671171.861

EASTING: 1799541.743



RECORD:  
 SET P.K./WASHER  
 5-24-90, BARBOUR  
 DNF  
 8-8-00, BVD  
 FD SM RR SPIKE  
 5" BELOW  
 REF77  
 5-5-16, DCH  
 7-12-17, JLL  
 SET MAG/WASHER  
 REF77  
 7-10-18, JLL



O.D.O.T. DISTRICT 2 SURVEY OFFICE

36 of 63

PERSONNEL

REFERENCE NO. 77

SHEET 28 OF       

NOTES Cronin

DRAWN 7/06/88

H.C. Rippl

DATE 5-24-90

ROUTE #163

R.C. Barbour

WEATHER Cloudy

COUNTY Ottawa

Geyman

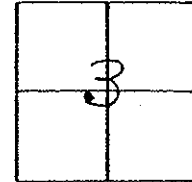
TEMP. 75°

TOWNSHIP Salem

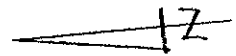
SECTION 3

T 6 N R 15 E

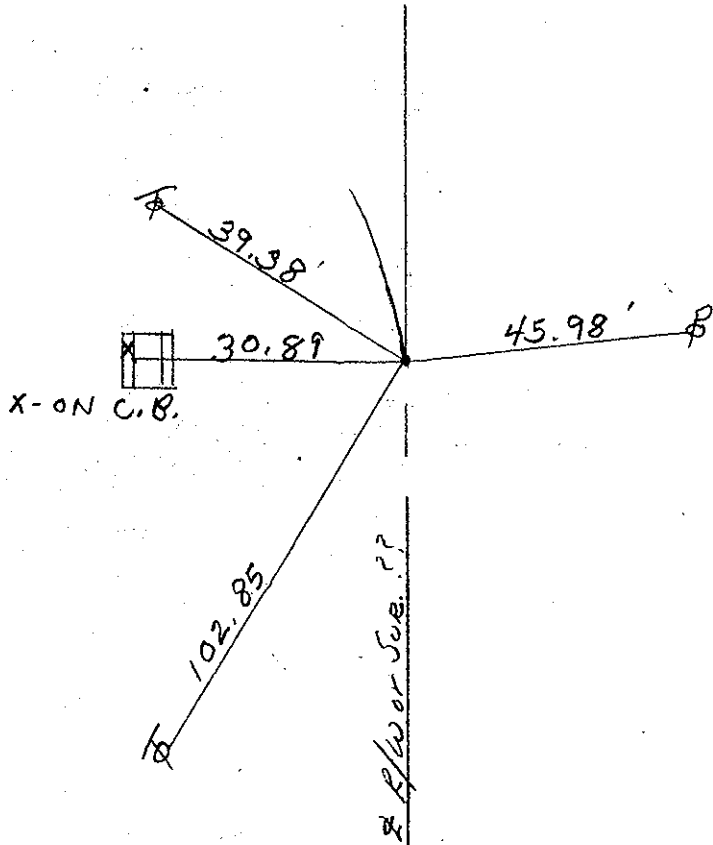
TYPE MONUMENT Set P.K. & Washer  
 ON SURFACE - BELOW Small 1/4" Spike 3" down  
 LEFT - € PAV'T. - RIGHT 1' LT. &  
 \_\_\_\_\_ TO \_\_\_\_\_ EDGE PAVEMENT  
 S.L.M. Sta. 105+68.71



NOTE:  
 DID NOT FIND  
 8-8-00



P.C.



# O.D.O.T. DISTRICT 2 SURVEY OFFICE

PERSONNEL

REFERENCE NO. 77

SHEET 28 OF     

NOTES Cronin

DRAWN 7/06/88

H.C. Ripple

DATE 5-24-90

R.C. BARbour

WEATHER Cloudy

Geyman

TEMP. 75°

ROUTE #163

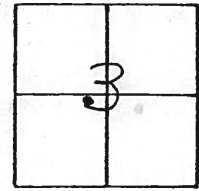
COUNTY Ottawa

TOWNSHIP Salem

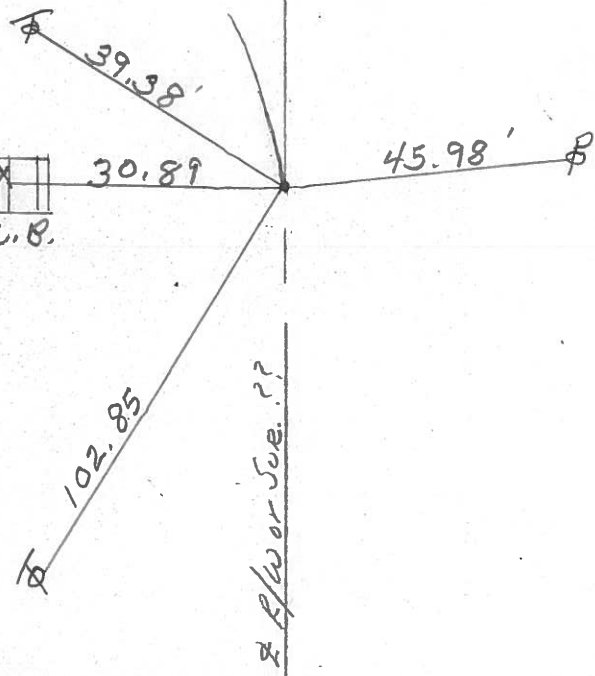
SECTION 3

T 6 N R 15 E

TYPE MONUMENT Set P.K. & Washer  
 ON SURFACE - BELOW Small R/R Spike 3" down  
 LEFT - ¢ PAV'T. - RIGHT 1' LT. &  
 TO EDGE PAVEMENT  
 S.L.M. Sta. 105+68.71



P.C.



PERSONNEL TITLE PERSONNEL TITLE

COUNTY Ottawa DATE March 1972

S. R. 163 WEATHER

SEC. Oak Harbor - East TEMP.

DESCRIPTION Sec 3 Salem Twp. JOB NO.

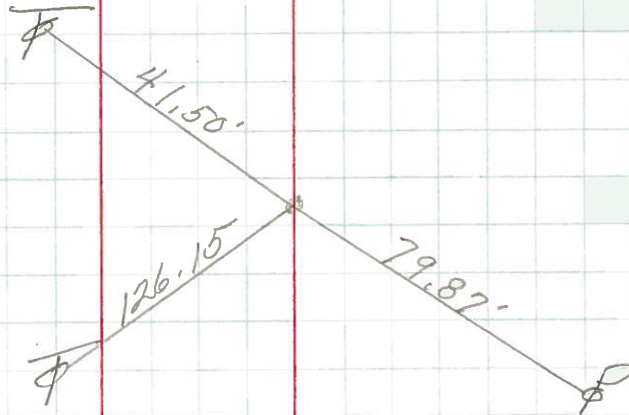
LEFT

CENTER LINE

RIGHT

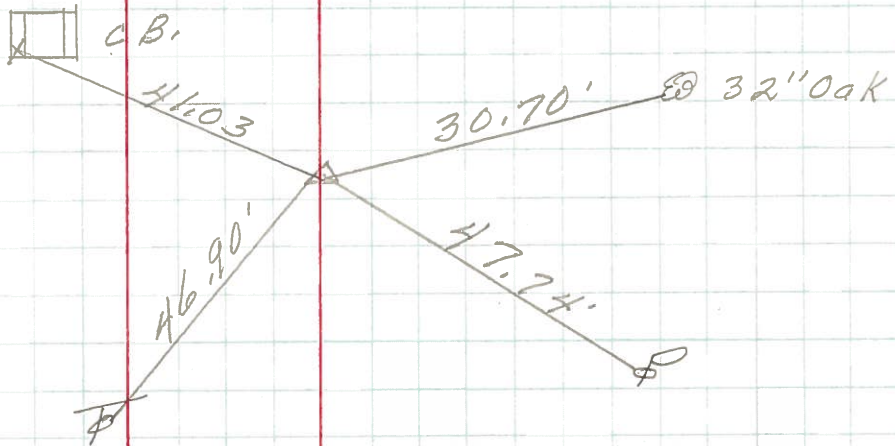
P.T.  
110+18.70  
small R.R. spk.

79



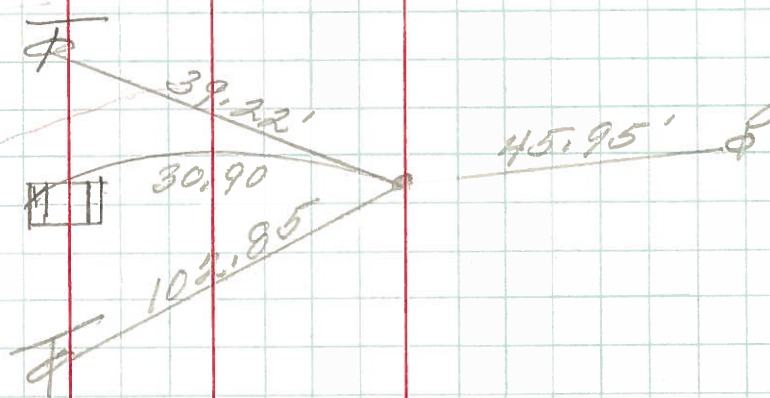
P.I.  
107+94.17  
Headless P.K. Nail

78



P.C.  
105+68.71  
Small R.R. spk.

77



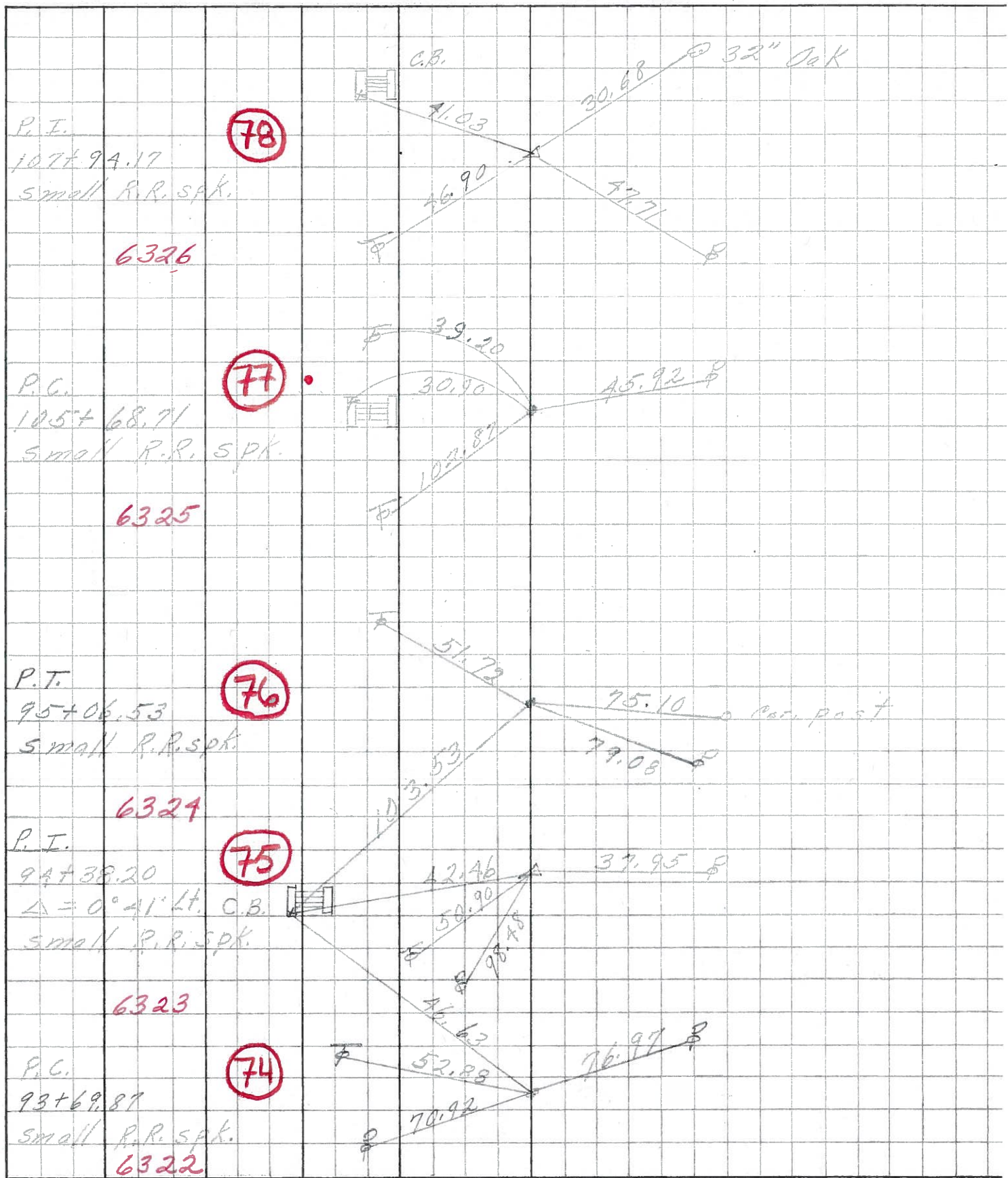
<u>PERSONNEL</u>	<u>TITLE</u>	<u>PERSONNEL</u>	<u>TITLE</u>
<u>Schneider</u>		<u>Potts</u>	
<u>Mosser</u>			
<u>Barbour</u>			
<u>Redding</u>			
<u>DESCRIPTION</u> <u>Ties for Control Points</u>			

COUNTY Ottawa DATE Aug. 1968

S. R. 163 WEATHER \_\_\_\_\_

SEC. Oak Harbor-East TEMP. \_\_\_\_\_

JOB NO. \_\_\_\_\_



PERSONNEL	TITLE	PERSONNEL	TITLE	COUNTY	DATE
Xrabikh				Ottawa	Feb. 19, 1969
Kowaleski				S. R. # 163	WEATHER
Geyman				SEC. E-2 (PT)	TEMP.
Bruggeman					

DESCRIPTION Oak Harbor Matt. Locations EAST JOB NO. \_\_\_\_\_

