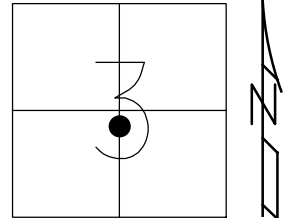


O.D.O.T. DISTRICT 2 SURVEY OFFICE (USE ONLY)

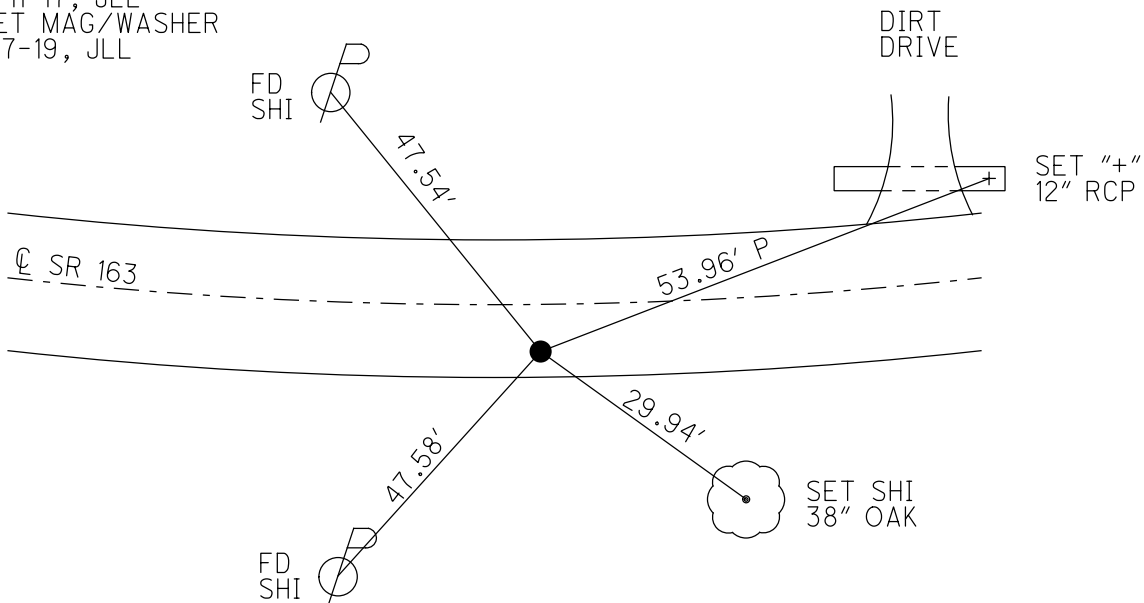
PERSONNEL _____ REFERENCE NO. 78 SHEET 47 OF 74
 NOTES RHOADES DATE 1-7-19 ROUTE SR 163
 H.C. LEU WEATHER CLOUDY COUNTY OTTAWA
 R.C. MILLER TEMP. 35° TOWNSHIP SALEM
O'DONNELL SECTION 3
 DWG BY JAMES PID 95757 T 6 N R 15 E

TYPE MONUMENT MAG/WASHER
 ON SURFACE - ~~BELOW~~ ON
 OFFSET ☉ PAVEMENT 8.8' ~~LT~~ : RT
1.3' TO RT EDGE PAVEMENT
 STATION: 835+66

HORIZ.DATUM: NAD83 2011 GEOID: NAVD88 2012A
 GRID: NORTHING: 671168.112 EASTING: 1799763.438



RECORD: P.I.
 $\Delta = 9^\circ 0' \text{ LT}$
 STA 107+94.17
 FD P.K./WASHER
 8-8-00, BVD
 SET P.K./WASHER
 6-7-01, SAH
 DNF
 CALC78
 5-5-16, DCH
 7-11-17, JLL
 SET MAG/WASHER
 1-7-19, JLL



O.D.O.T. DISTRICT 2 SURVEY OFFICE

PERSONNEL

REFERENCE NO. 78

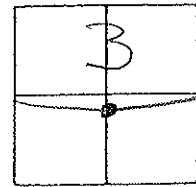
SHEET 37 OF 63

NOTES Cordes
 H.C. Van Dusen
 R.C. Kauger
Brown P

DATE 8-8-00
 WEATHER Fair
 TEMP. 80°F

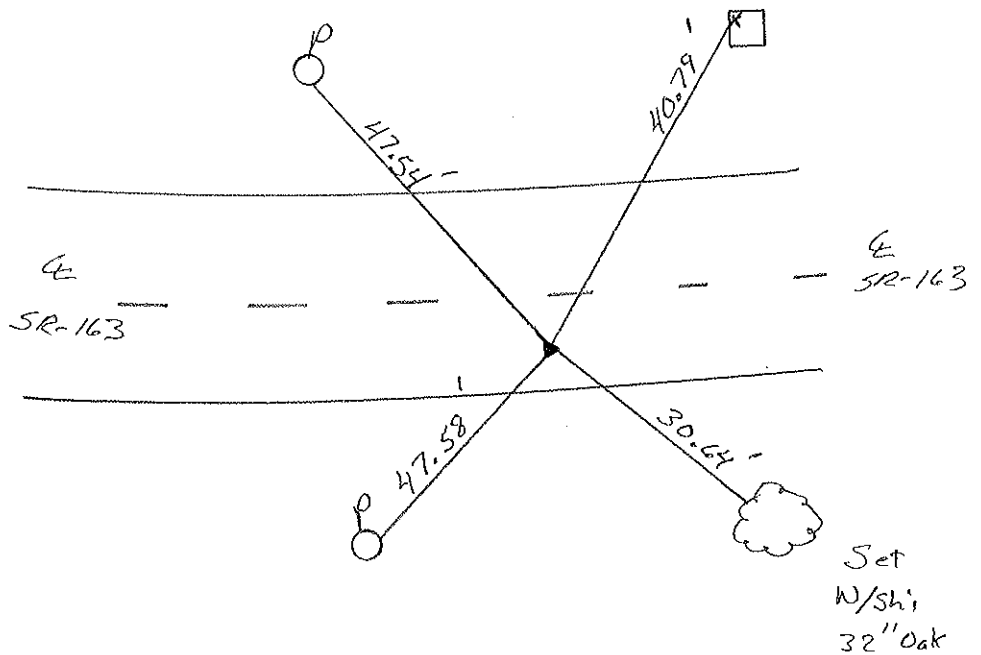
ROUTE 163
 COUNTY Ottawa
 TOWNSHIP Salem
 SECTION 3
T 6 N R 15 E

TYPE MONUMENT PK/w
ON SURFACE - ~~Below~~ Surface
~~Right of Way~~ - RIGHT 8.8' Rt of W
TO EDGE PAVEMENT
 S.L.M. 835+66



Record: Plan Sta = 107+94.17
 PI $\Delta = 09^{\circ}00'00''$
 Lt - Plan

SET PK & WASHER
 6-7-01
 SAH



O.D.O.T. DISTRICT 2 SURVEY OFFICE

PERSONNEL

REFERENCE NO. 77

SHEET 28 OF

NOTES Cronin

DRAWN 7/06/88

H.C. Ripple

DATE 5-24-90

R.C. BARbour

WEATHER cloudy

Geyman

TEMP. 75°

ROUTE #163

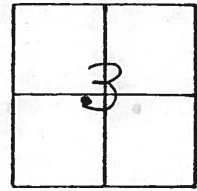
COUNTY Ottawa

TOWNSHIP Salem

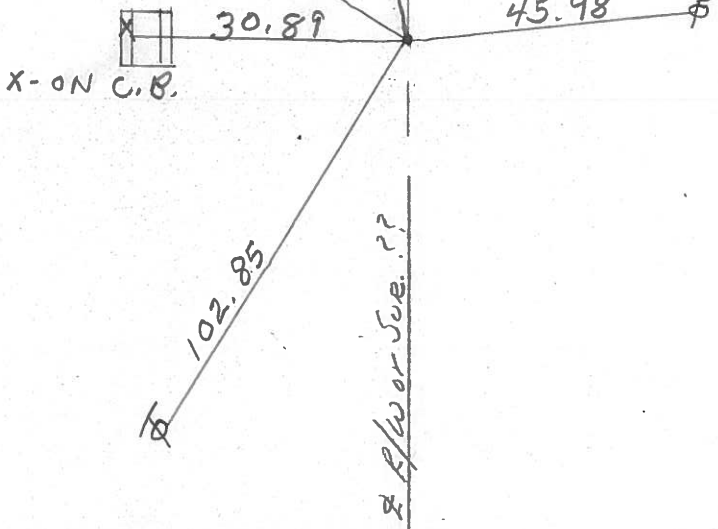
SECTION 3

T 6 N R 15 E

TYPE MONUMENT Set P.K. & Washer
 ON SURFACE - BELOW Small R/R Spike 3" down
 LEFT - ¢ PAV'T. - RIGHT 1' LT. &
 TO EDGE PAVEMENT
 S.L.M. Sta. 105+68.71



P.C.



PERSONNEL TITLE PERSONNEL TITLE

COUNTY Ottawa DATE March 1972

S. R. 163 WEATHER

SEC. Oak Harbor - East TEMP.

DESCRIPTION Sec 3 Salem Twp. JOB NO.

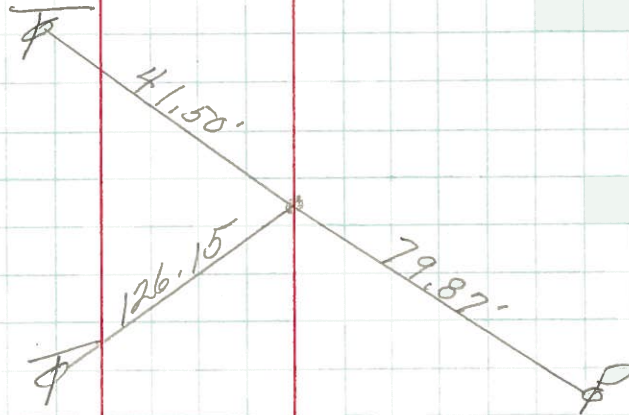
LEFT

CENTER LINE

RIGHT

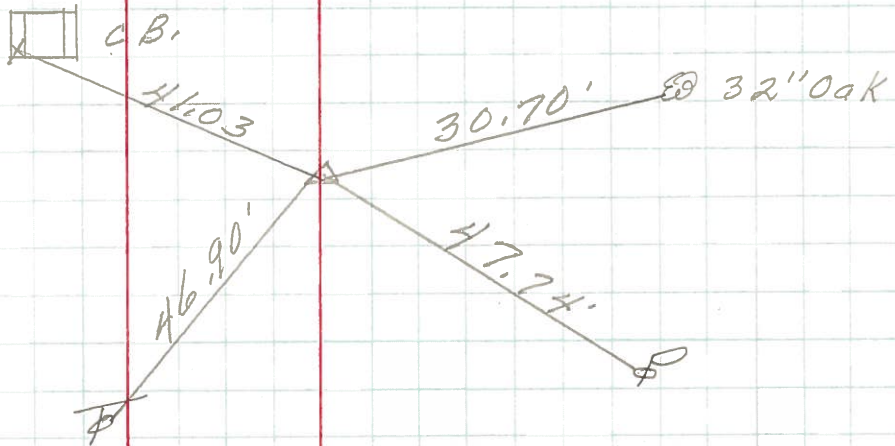
P.T.
110+18.70
small R.R. spk.

79



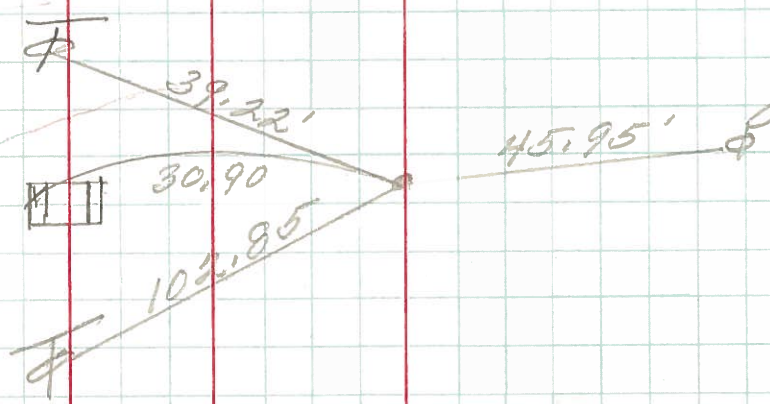
P.I.
107+94.17
Headless P.K. Nail

78



P.C.
105+68.71
Small R.R. spk.

77



PERSONNEL	TITLE	PERSONNEL	TITLE	COUNTY	DATE
<u>Schneider</u>		<u>Potts</u>		<u>Ottawa</u>	<u>Aug. 1960</u>
<u>Mosser</u>				S. R. <u>163</u>	WEATHER
<u>Barbour</u>				SEC. <u>Oak Harbor-East</u>	TEMP.
<u>Redding</u>					
DESCRIPTION	<u>Ties for Control Points</u>				JOB NO.

