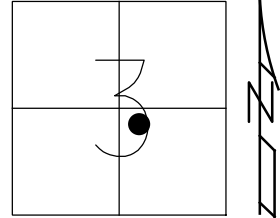


O.D.O.T. DISTRICT 2 SURVEY OFFICE (USE ONLY)

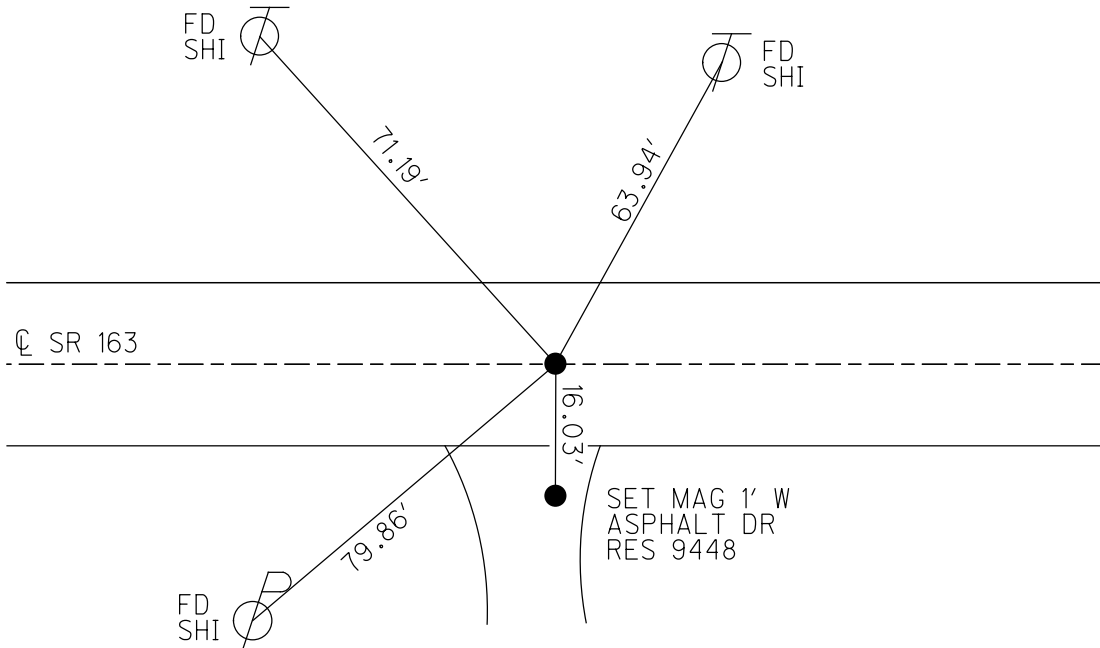
PERSONNEL _____ REFERENCE NO. 79 SHEET 48 OF 74
 NOTES NUHFER DATE 7-12-17 ROUTE SR 163
 H.C. LEU WEATHER FAIR COUNTY OTTAWA
 R.C. CARSON TEMP. 80° TOWNSHIP SALEM
 DWG BY JAMES PID 95757 SECTION 3
 T 6 N R 15 E

TYPE MONUMENT P.K./WASHER
~~ON SURFACE~~ - BELOW 3"
 OFFSET Q PAVEMENT ON LT : RT
11.5' TO LT EDGE PAVEMENT
 STATION: 837+92



HORZ. DATUM: NAD83 2011 GEOID: NAVD88 2012A
 GRID: NORTHING: 671117.394 EASTING: 1799988.180

RECORD: P.T.
 STA 110+18.71
 FD P.K./WASHER
 8-8-00, BVD
 SET P.K./WASHER
 6-7-01, SAH
 FD P.K./WASHER
 3" BELOW
 REF 79
 7-12-17, JLL
 SET MAG/WASHER
 1-7-19, JLL



O.D.O.T. DISTRICT 2 SURVEY OFFICE

PERSONNEL

REFERENCE NO. 79

SHEET 38 OF 63

NOTES Cordes

H.C. Brown

R.C. Karger

VanDusen F

DATE 8-8-00

WEATHER Fair

TEMP. 80°

ROUTE 163

COUNTY Ottawa

TOWNSHIP Salem

SECTION 3

T 6 N R 15 E

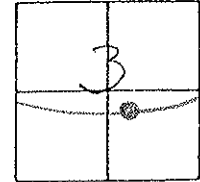
TYPE MONUMENT PK/w

ON SURFACE - BELOW 2" Below

~~ON~~ PAV'T. ~~ON~~ on E

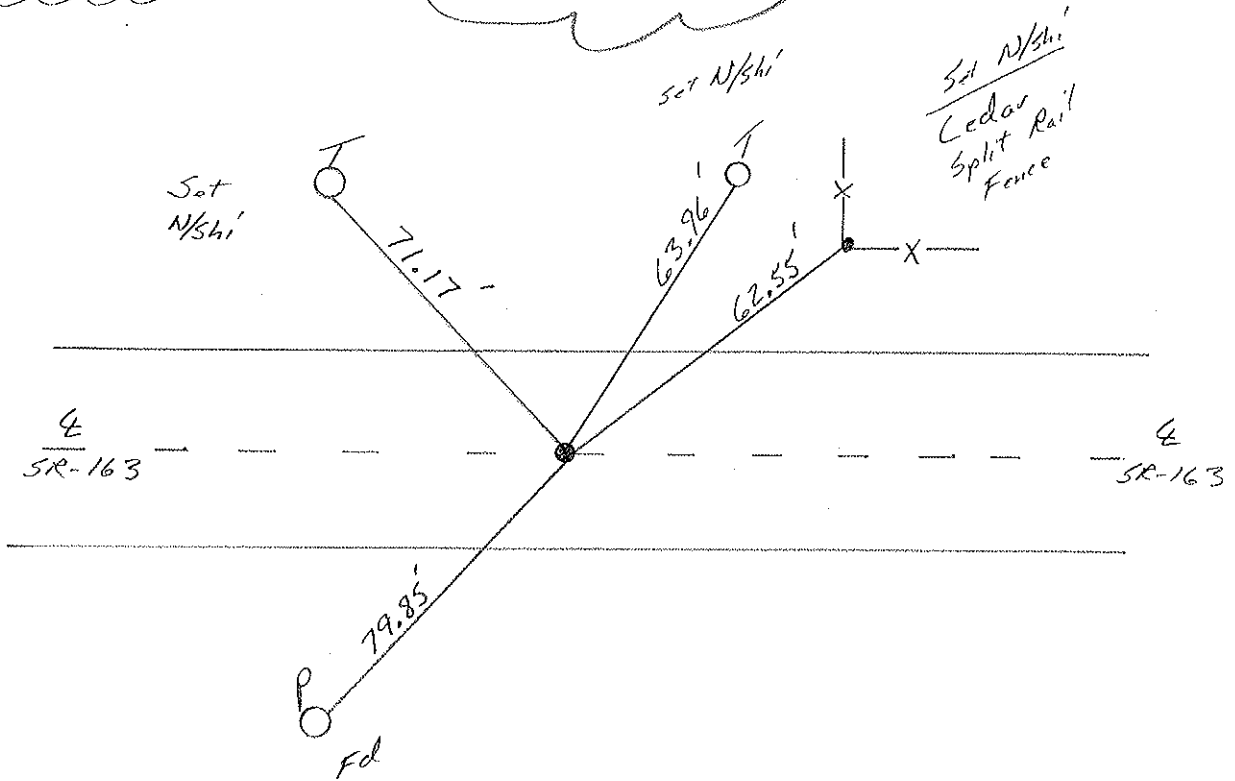
11.5' TO LT. EDGE PAVEMENT

S.L.M. 837+92



Record: PT
Plan Sta- 110+18.71

SET PK & WASHER
 6-7-01
 SAH



O.D.O.T. DISTRICT 2 SURVEY OFFICE

PERSONNEL

REFERENCE NO. 79

SHEET 30 OF

NOTES Cronin

DRAWN - 7/06/88

H.C. Ripple

DATE 5-24-90

R.C. Barbour

WEATHER Cloudy

GeyMAN

TEMP. 75°

ROUTE #163

COUNTY Ottawa

TOWNSHIP Salem

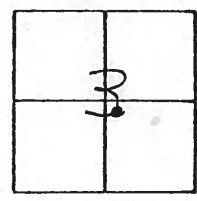
SECTION 3

T6 NR 15 E

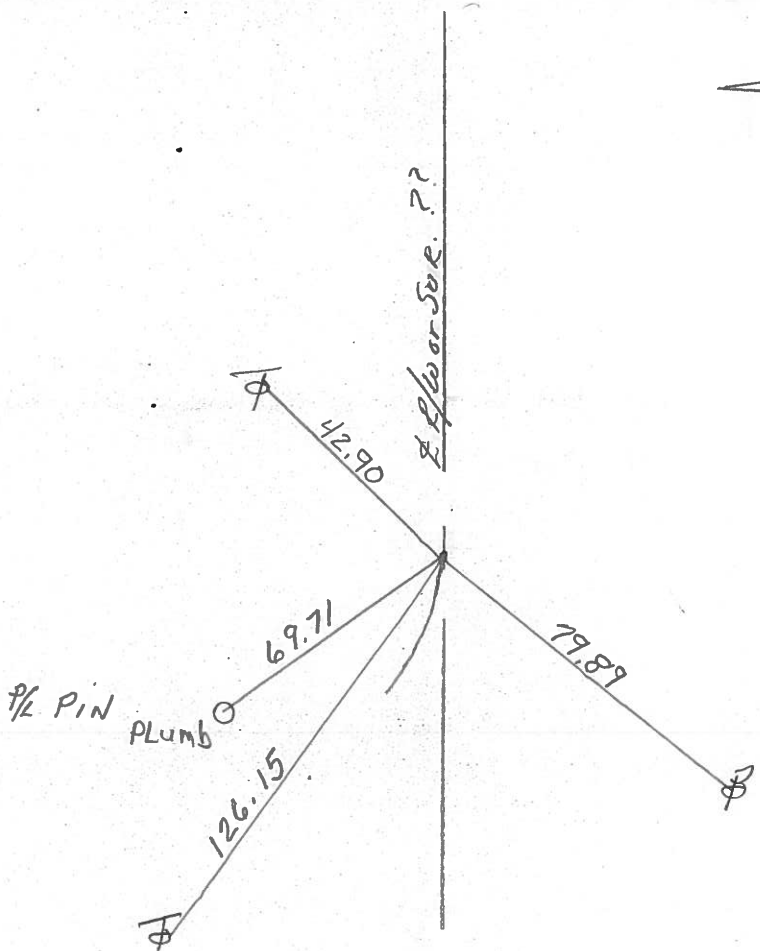
TYPE MONUMENT Set P.K. - Washer
 ON SURFACE - BELOW Small 1/2" Spike 3" down
 LEFT - € PAV'T. - RIGHT

TO EDGE PAVEMENT

S.L.M. Sta. 110+18.71 837-85 SLM



P.T.



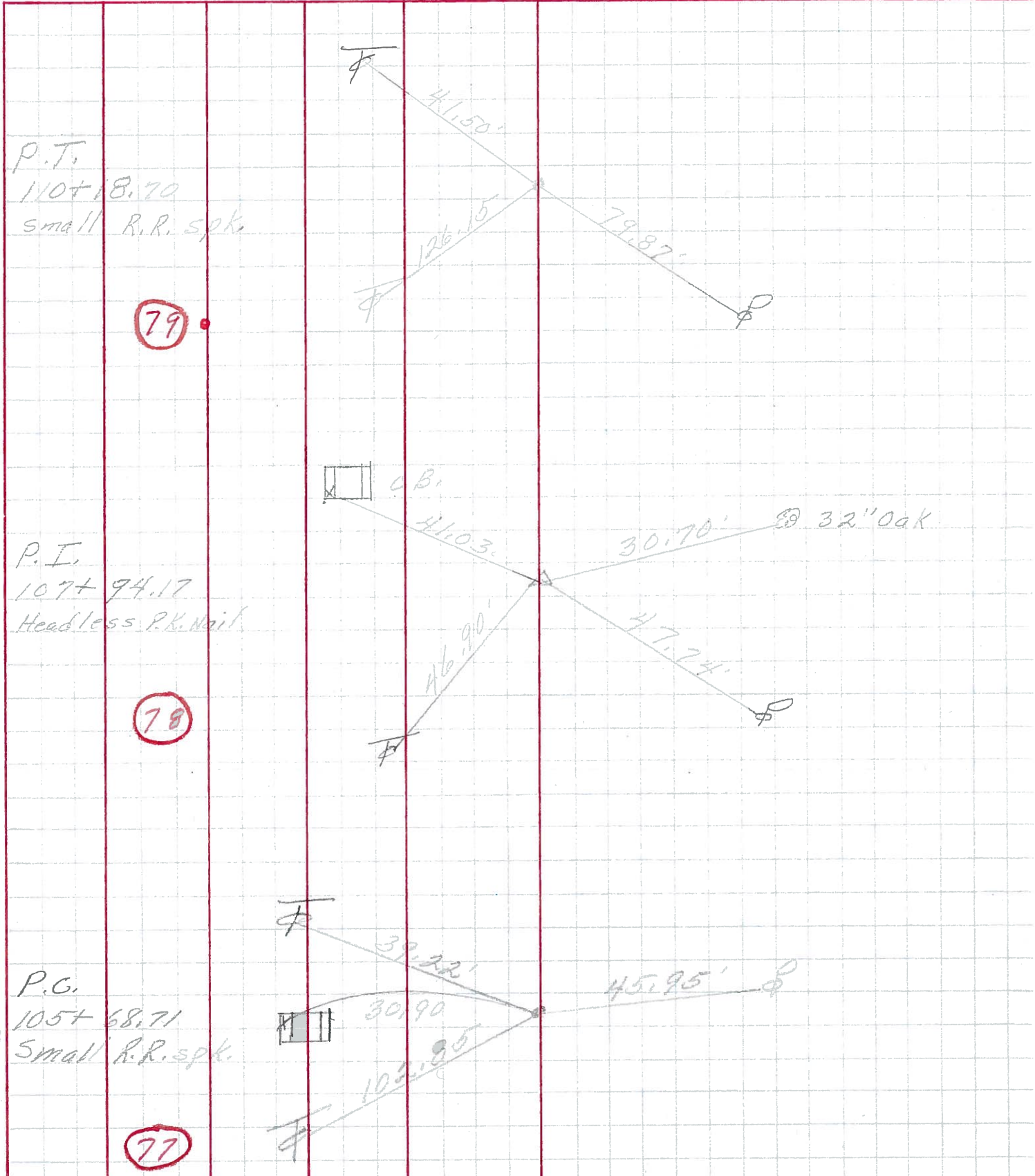
PERSONNEL	TITLE	PERSONNEL	TITLE

COUNTY Ottawa DATE March 1972

S. R. 163 WEATHER

SEC. Oak Harbor - East TEMP.

DESCRIPTION Sec 3 Salem Twp. JOB NO.



PERSONNEL TITLE PERSONNEL TITLE

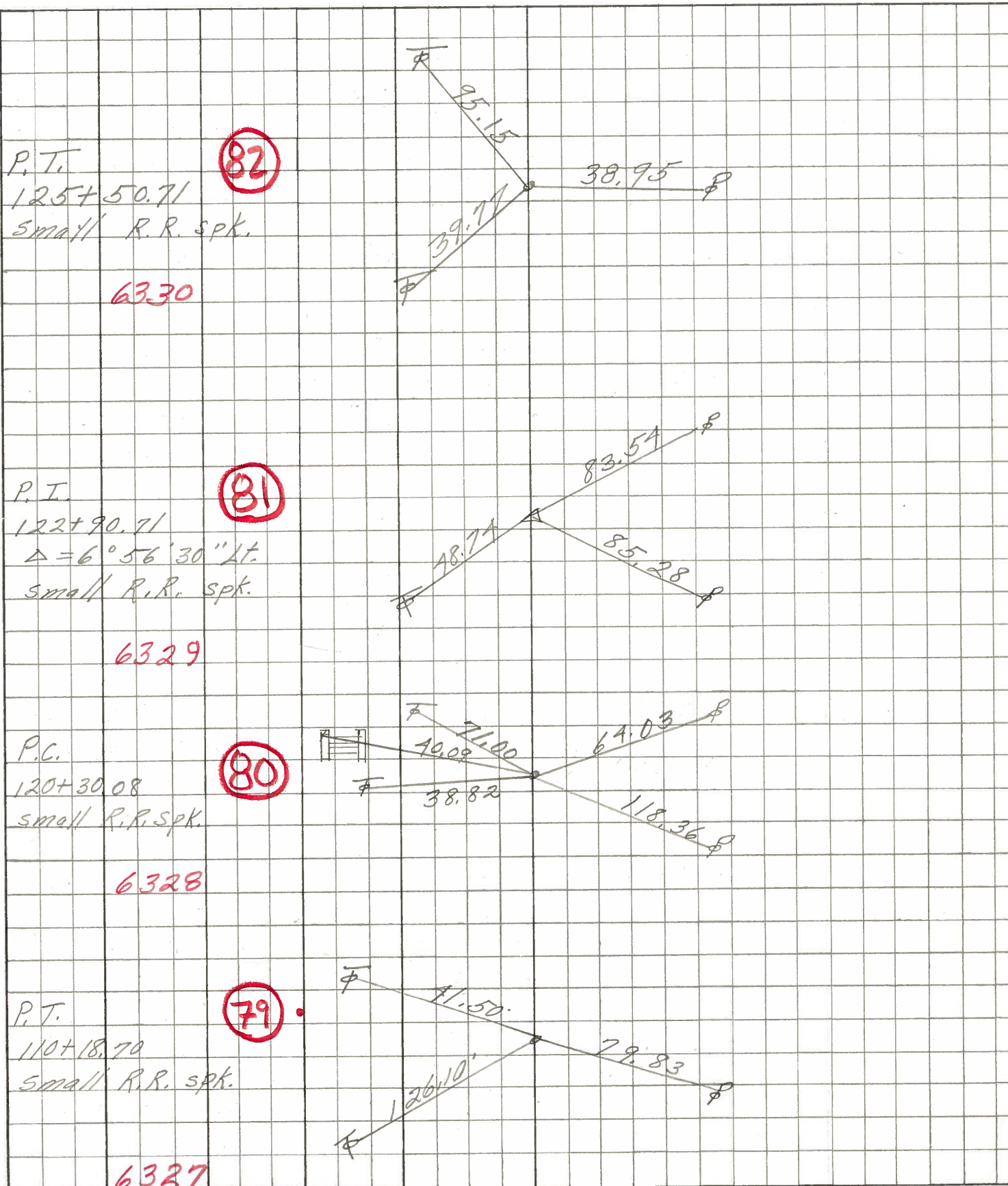
Schneider _____ Potts _____
Messer _____ _____
Barbour _____ _____
Redding _____ _____

COUNTY Ottawa DATE Aug. 1968

S. R. 163 WEATHER _____

SEC. Oak Harbor-East TEMP. _____

DESCRIPTION Ties for Control Points JOB NO. _____



PERSONNEL	TITLE	PERSONNEL	TITLE	COUNTY	DATE	WEATHER	TEMP.	JOB NO.
KrabiLL				OTTAWA	FEB. 19, 1964			
Kowaleski				#163				
Seyman				SEC. E2 (pt)				
Bruggeman								
DESCRIPTION OAK Harbor		EAST						

