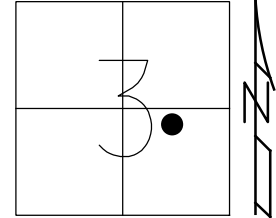


O.D.O.T. DISTRICT 2 SURVEY OFFICE (USE ONLY)

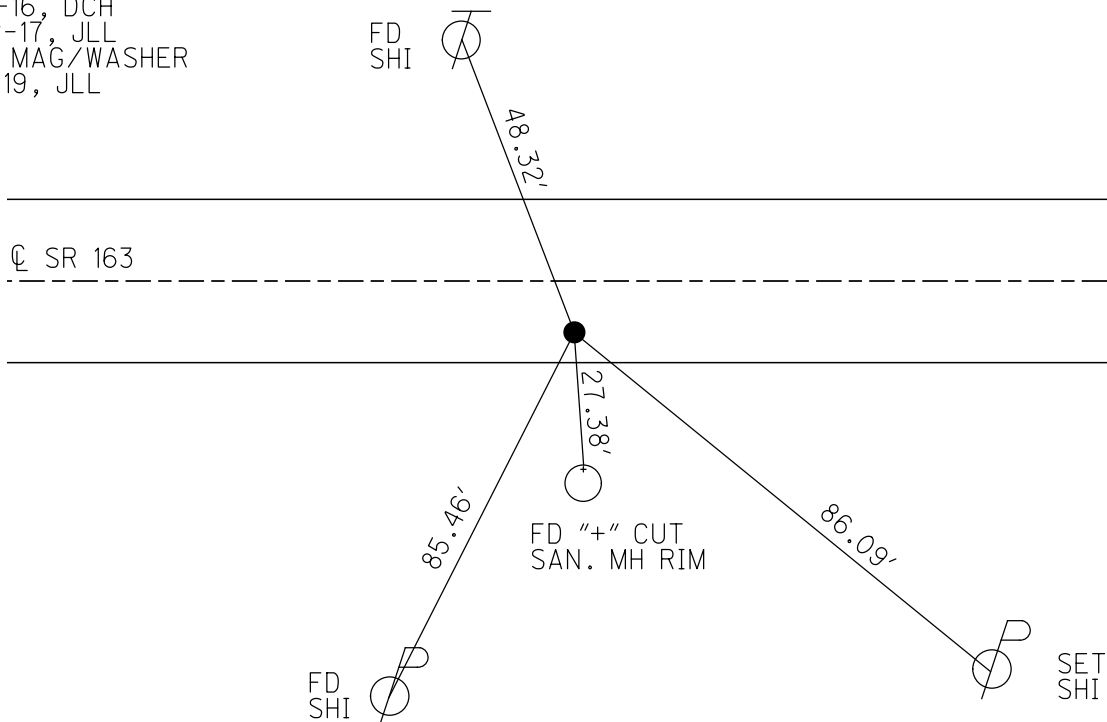
PERSONNEL _____ REFERENCE NO. 81 SHEET 50 OF 74
 NOTES NUHFER DATE 7-12-17 ROUTE US 163
 H.C. LEU WEATHER SUNNY COUNTY OTTAWA
 R.C. CARSON TEMP. 80° TOWNSHIP SALEM
 DWG BY JAMES PID 95757 SECTION 3
 T 6 N R 15 E

TYPE MONUMENT P.K. SHANK
 ON SURFACE - ~~BELOW~~ ON
 OFFSET ☐ PAVEMENT 7.7' ~~±~~ : RT
3.5' TO RT EDGE PAVEMENT
 STATION: 848+63



HORIZ.DATUM: NAD83 2011 GEOID: NAVD88 2012A
 GRID: NORTHING: 671062.513 EASTING: 1801257.474

RECORD: P.I.
 $\Delta = 6^\circ 56'30''$ LT
 STA 122+90.71
 SM RR SPIKE
 1 1/2" DOWN
 FD P.K./WASHER
 8-8-00, BVD
 SET P.K./WASHER
 6-7-01, BVD
 FD P.K. SHANK
 4 1/4" DOWN
 REF81
 5-5-16, DCH
 7-12-17, JLL
 SET MAG/WASHER
 1-7-19, JLL



O.D.O.T. DISTRICT 2 SURVEY OFFICE

PERSONNEL

REFERENCE NO. 81

SHEET 40 OF 63

NOTES CORDES

H.C. VAN DUSEN

DATE 8-8-00

ROUTE 163

R.C. KARGER

WEATHER CLOUDY

COUNTY OTTAWA

ADAM B.

TEMP. +80°F

TOWNSHIP SALEM

SECTION 3

T6 N R 15 E

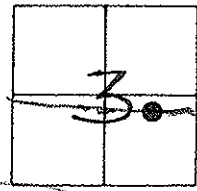
TYPE MONUMENT P.K. NAIL & WASHER

ON SURFACE - ~~BELOW~~ YES

~~LEFT~~ - ~~PAV'T.~~ - RIGHT YES

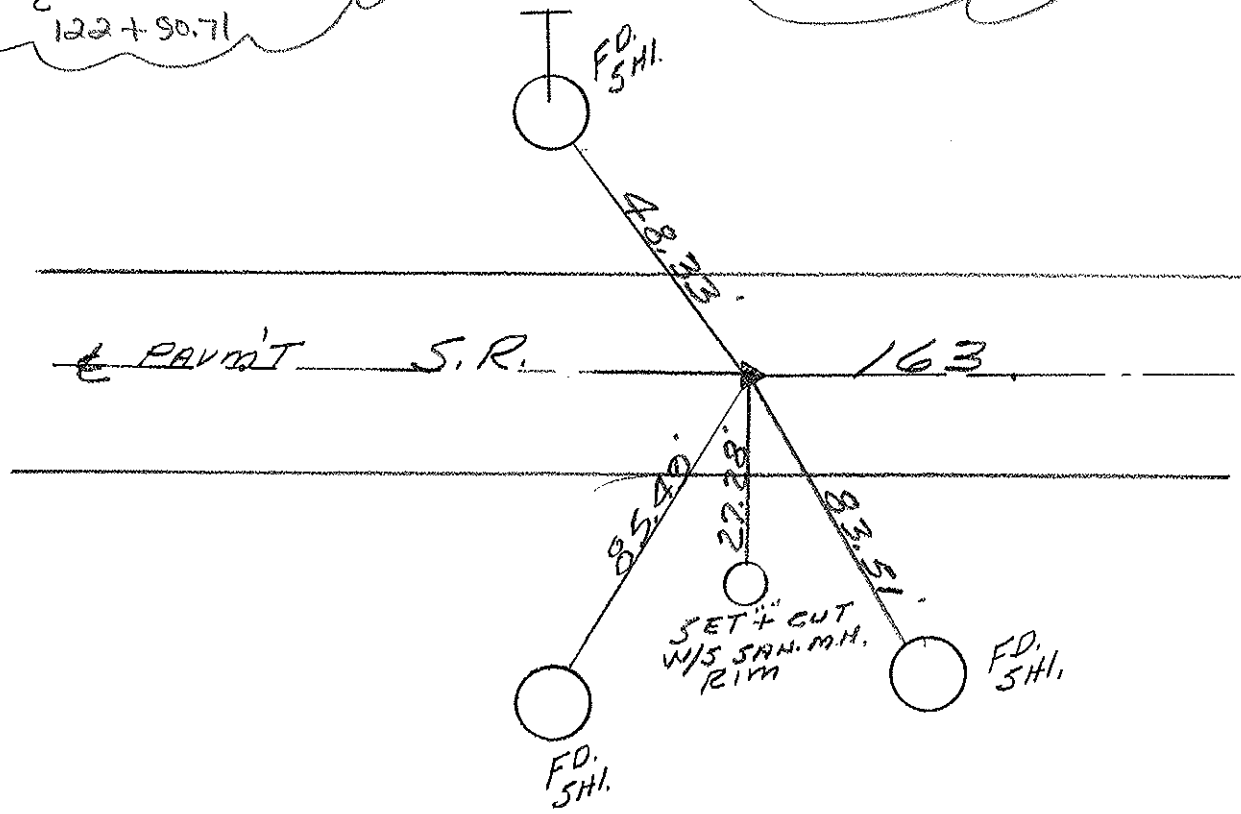
3.5 TO RT. EDGE PAVEMENT

S.L.M. 848+63



REC. P.I. PLAN
 $A = 06^{\circ}56'30''$ LT.
 SMALL R.R. SPK.
 $1\frac{1}{2}$ " DOWN
 122+90.71

SET PK & WASHER
 6-7-01
 BVD



O.D.O.T. DISTRICT 2 SURVEY OFFICE

PERSONNEL

REFERENCE NO. 81

SHEET 32 OF

NOTES Cronin

DRAWN 7/06/88

H.C. Ripple

DATE 5/24/90

ROUTE # 163

R.C. Barbour

WEATHER cloudy

COUNTY Ottawa

Geyman

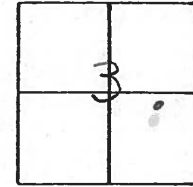
TEMP. 70°

TOWNSHIP Salem

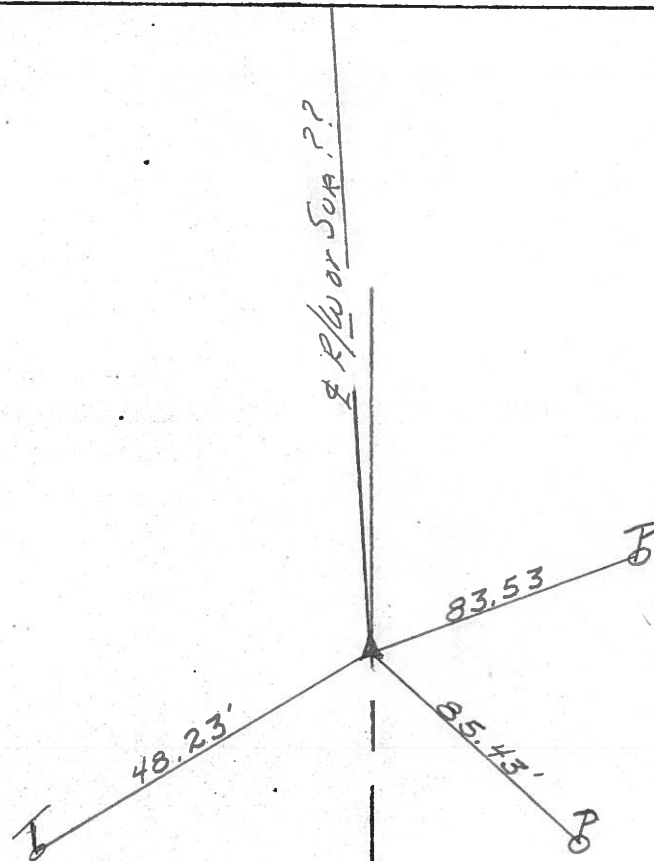
SECTION 3

T 6 N R 15 E

TYPE MONUMENT Set PK. Nail Washer
 ON SURFACE - BELOW Small R/R spike 1 1/2" down
 LEFT - ℄ Pav't. - RIGHT ℄ Pav't.
 TO EDGE PAVEMENT
 S.L.M. Sta. 122+90.71



P.F
A = 06° 56' 30" Lt. Plan
Small R/R spike
1 1/2" down



PERSONNEL TITLE PERSONNEL TITLE

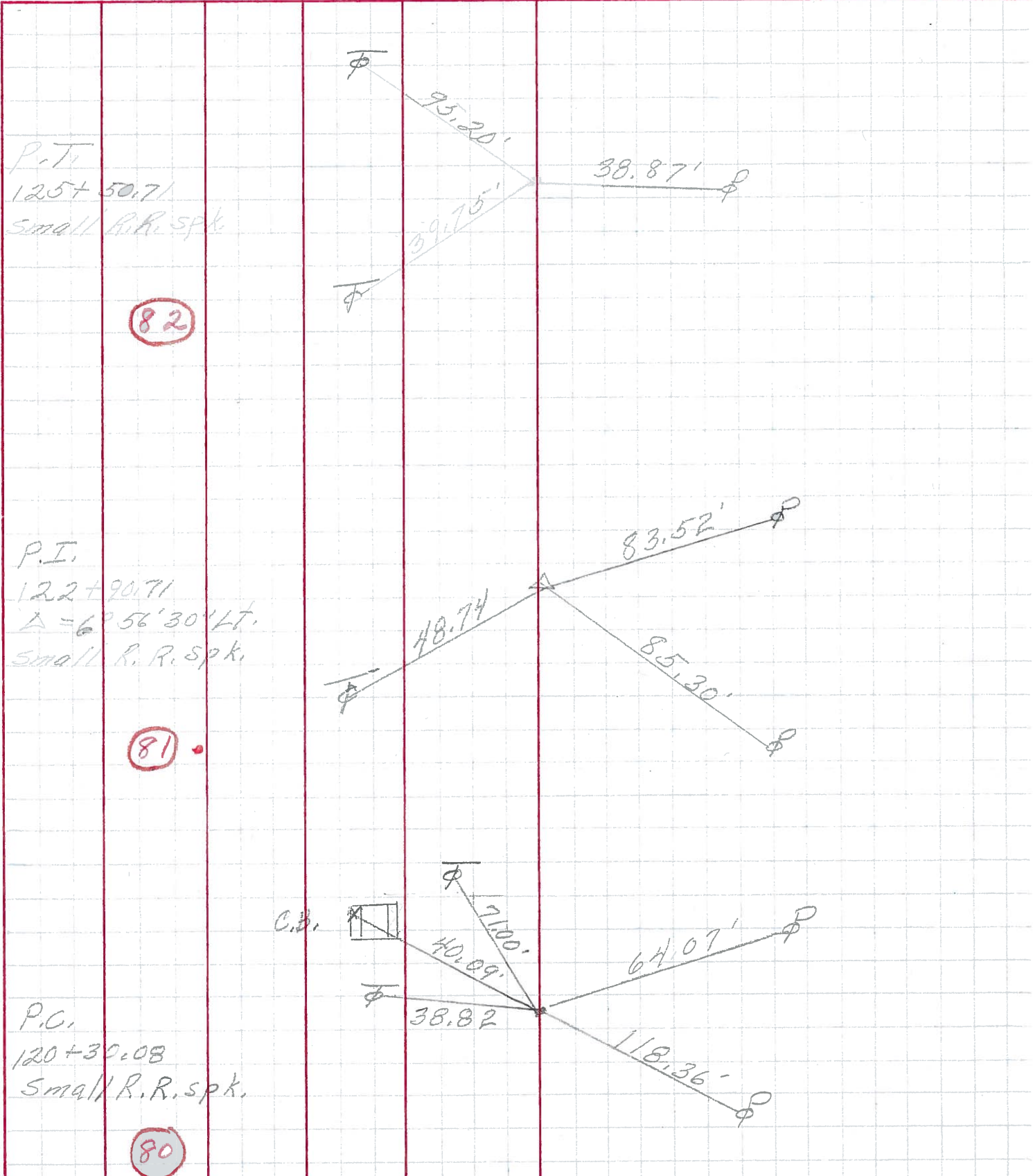
COUNTY Ottawa DATE March 1972

S. R. 163 WEATHER

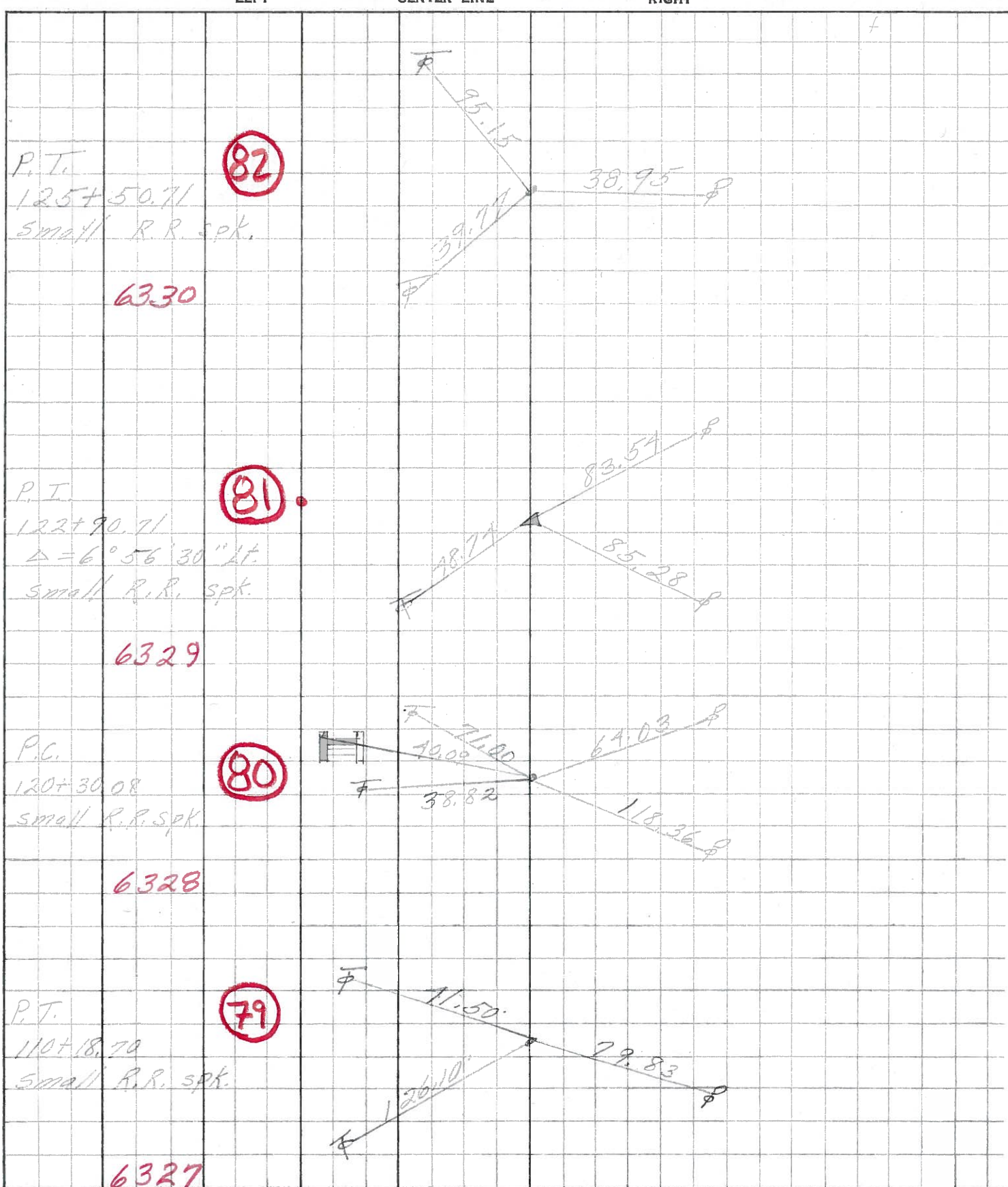
SEC Sak Harbor-East TEMP.

DESCRIPTION sec 3 Salem Twp JOB NO.

LEFT CENTER LINE RIGHT



PERSONNEL	TITLE	PERSONNEL	TITLE	COUNTY	DATE
<u>Schneider</u>		<u>Potts</u>		<u>Ottawa</u>	<u>Aug. 1968</u>
<u>Messer</u>				S. R. <u>163</u>	WEATHER
<u>Barbour</u>				SEC. <u>Oak Harbor-East</u>	TEMP.
<u>Redding</u>					
DESCRIPTION	<u>Ties for Control Points</u>				JOB NO.



PERSONNEL	TITLE	PERSONNEL	TITLE
KraBill			
Kowaleski			
Geyman			
Bruggeman			

COUNTY OTTAWA DATE FEB. 19, 1964

S. R. #163 WEATHER _____

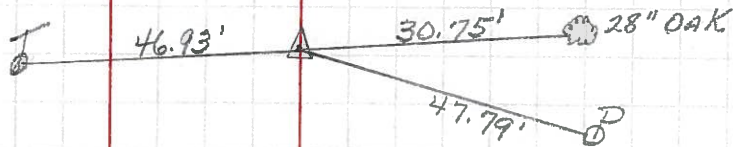
SEC. E2 (pt) TEMP. _____

DESCRIPTION OAK HARBOR EAST JOB NO. _____

LEFT CENTER LINE RIGHT

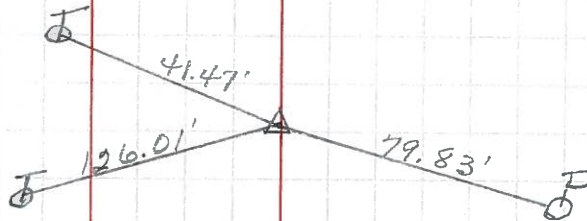
107+94.17
 P.I. Δ = 90° 00' Lt.
 R.R. Spike

#24
 (78)



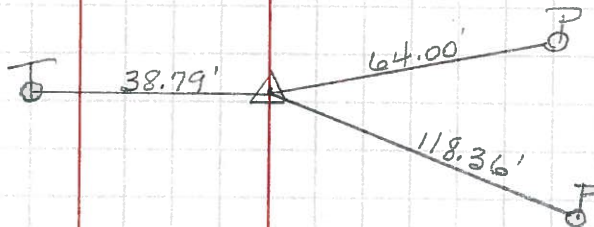
110+18.70
 P.T. R.R. Spike

#25
 (79)



120+30.08
 P.C. R.R. Spike

#26
 (80)



122+90.71
 P.I. Δ = 6° 56' - 30' Lt.
 R.R. Spike

#27
 (81)

