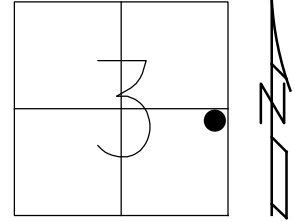


O.D.O.T. DISTRICT 2 SURVEY OFFICE (USE ONLY)

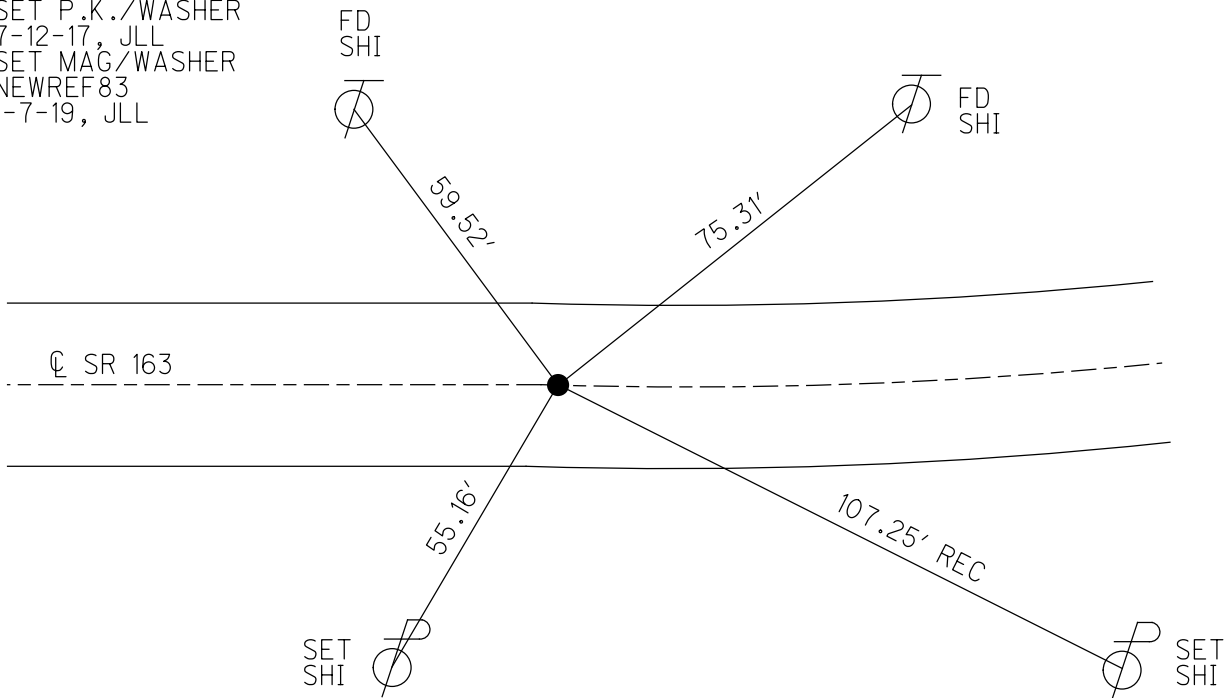
PERSONNEL	REFERENCE NO. <u>83</u>	SHEET <u>52</u> OF <u>74</u>
NOTES <u>CORDES</u>	DATE <u>8-8-00</u>	ROUTE <u>SR 163</u>
H.C. <u>BROWN</u>	WEATHER <u>FAIR</u>	COUNTY <u>OTTAWA</u>
R.C. <u>KARGEN</u>	TEMP. <u>80°</u>	TOWNSHIP <u>SALEM</u>
<u>VANDUSEN</u>		SECTION <u>3</u>
DWG BY <u>JAMES</u>	PID <u>95757</u>	T <u>6</u> N R <u>15</u> E

TYPE MONUMENT P.K./WASHER  
~~ON SURFACE~~ - BELOW 1.5'  
 OFFSET  $\odot$  PAVEMENT 0.5' ~~LT~~ : RT  
10.8' TO RT EDGE PAVEMENT  
 STATION: 858+15



HORZ.DATUM: NAD83 2011 GEOID: NAVD88 2012A  
 GRID: NORTHING: 671136.753 EASTING: 1802202.407

RECORD: P.C.  
 STA 132+36.76  
 FD P.K./WASHER  
 8-8-00, BVD  
 SET P.K./WASHER  
 6-7-01, SAH  
 FD P.K./WASHER  
 REF83  
 5-5-16, DCH  
 SET P.K./WASHER  
 7-12-17, JLL  
 SET MAG/WASHER  
 NEWREF83  
 1-7-19, JLL



# O.D.O.T. DISTRICT 2 SURVEY OFFICE

PERSONNEL

NOTES Cordes  
 H.C. Brown  
 R.C. Karger  
Van Dusen P

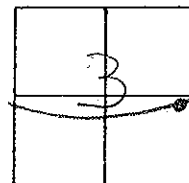
REFERENCE NO. 83

SHEET 42 OF 63

DATE 8-8-00  
 WEATHER Fair  
 TEMP. 80° F

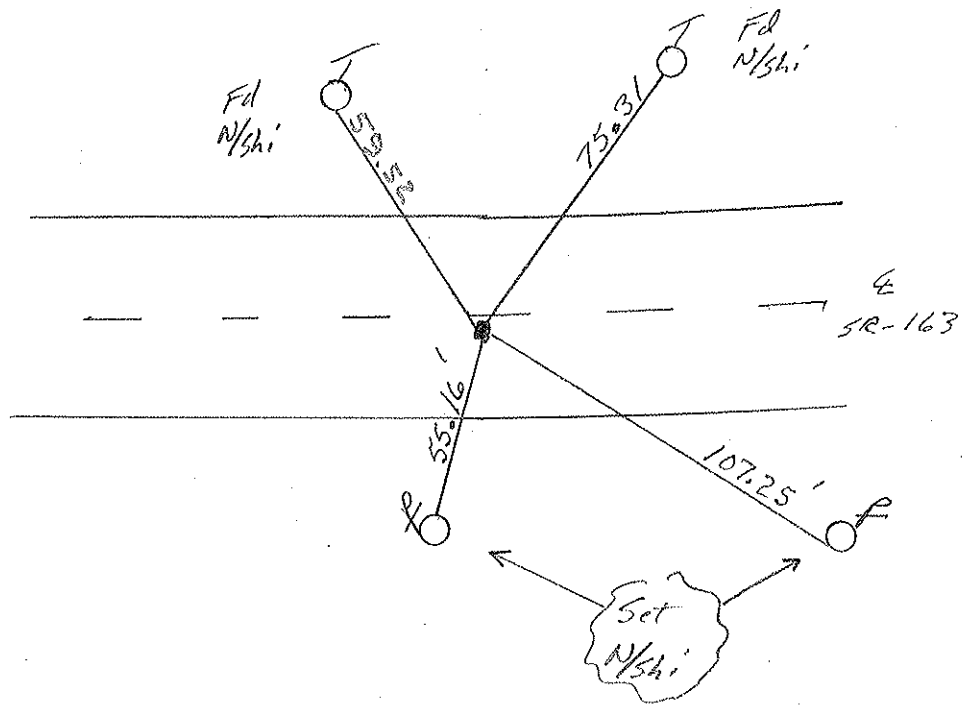
ROUTE 163  
 COUNTY Ottawa  
 TOWNSHIP Salem  
 SECTION 3  
 T 6 N R 15 E

TYPE MONUMENT PK/w  
~~ON SURFACE~~ - BELOW 1 1/2" deep  
~~VERT. PAINT~~ - RIGHT 0.5' Rt  
10.8' TO Rt. EDGE PAVEMENT  
 S.L.M. 858 + 15



Record: PC  
 Sta 132 + 36.76

SET PK & WASHER  
 6-7-01  
 SAH



# O.D.O.T. DISTRICT 2 SURVEY OFFICE

PERSONNEL

REFERENCE NO. 83

SHEET 34 OF \_\_\_\_\_

NOTES Cronin

DRAWN 7/06/88

H.C. Rippte

DATE 5-24-90

R.C. Barbour

WEATHER cloudy

Glyman

TEMP. 75°

ROUTE #163

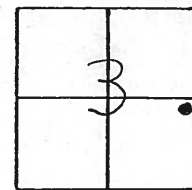
COUNTY Ottawa

TOWNSHIP Salem

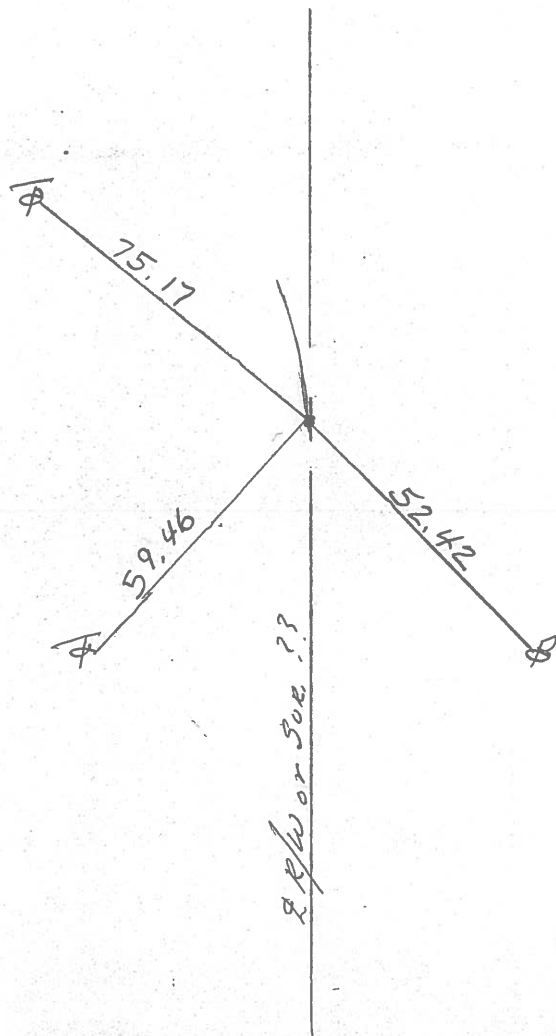
SECTION 3

T 6 N R 15 E

TYPE MONUMENT Set P.K. & Washer  
 ON SURFACE - BELOW Small P/R Spike 3" down  
 LEFT - € PAV'T. - RIGHT \_\_\_\_\_  
 TO \_\_\_\_\_ EDGE PAVEMENT  
 S.L.M. Sta. 132+36.76



P.C.



PERSONNEL TITLE PERSONNEL TITLE

COUNTY Ottawa DATE March 1972

S. R. 163 WEATHER

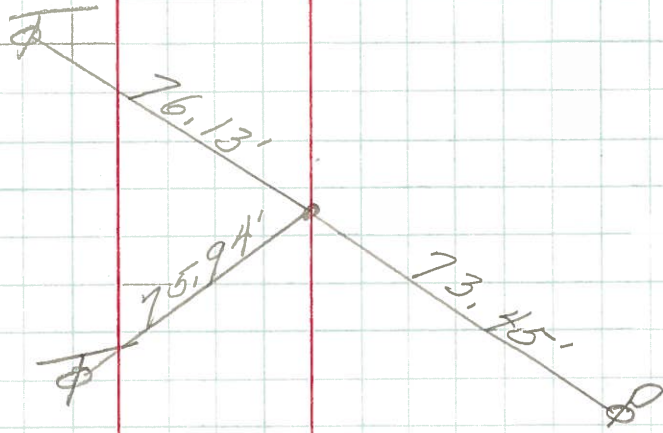
SEC. Oak Harbor-East TEMP.

DESCRIPTION sec 362 Salem Twp. JOB NO.

LEFT CENTER LINE RIGHT

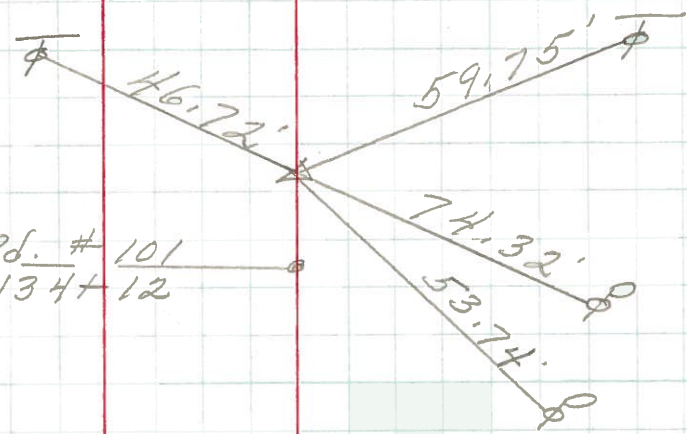
P.I.  
136+16.76  
small R.R. spk.

85



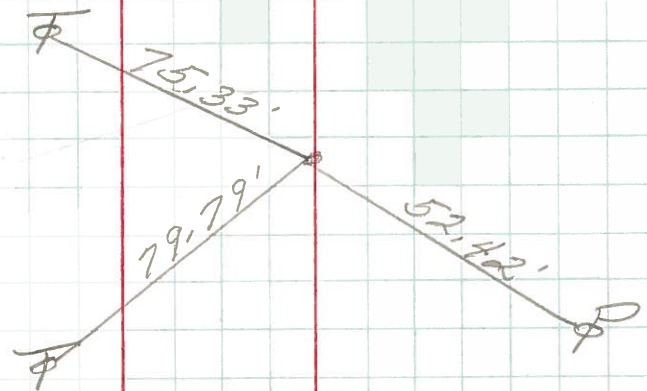
P.I.  
134+26.78  
small R.R. spk. Twp. Rd. # 101  
134+12

84

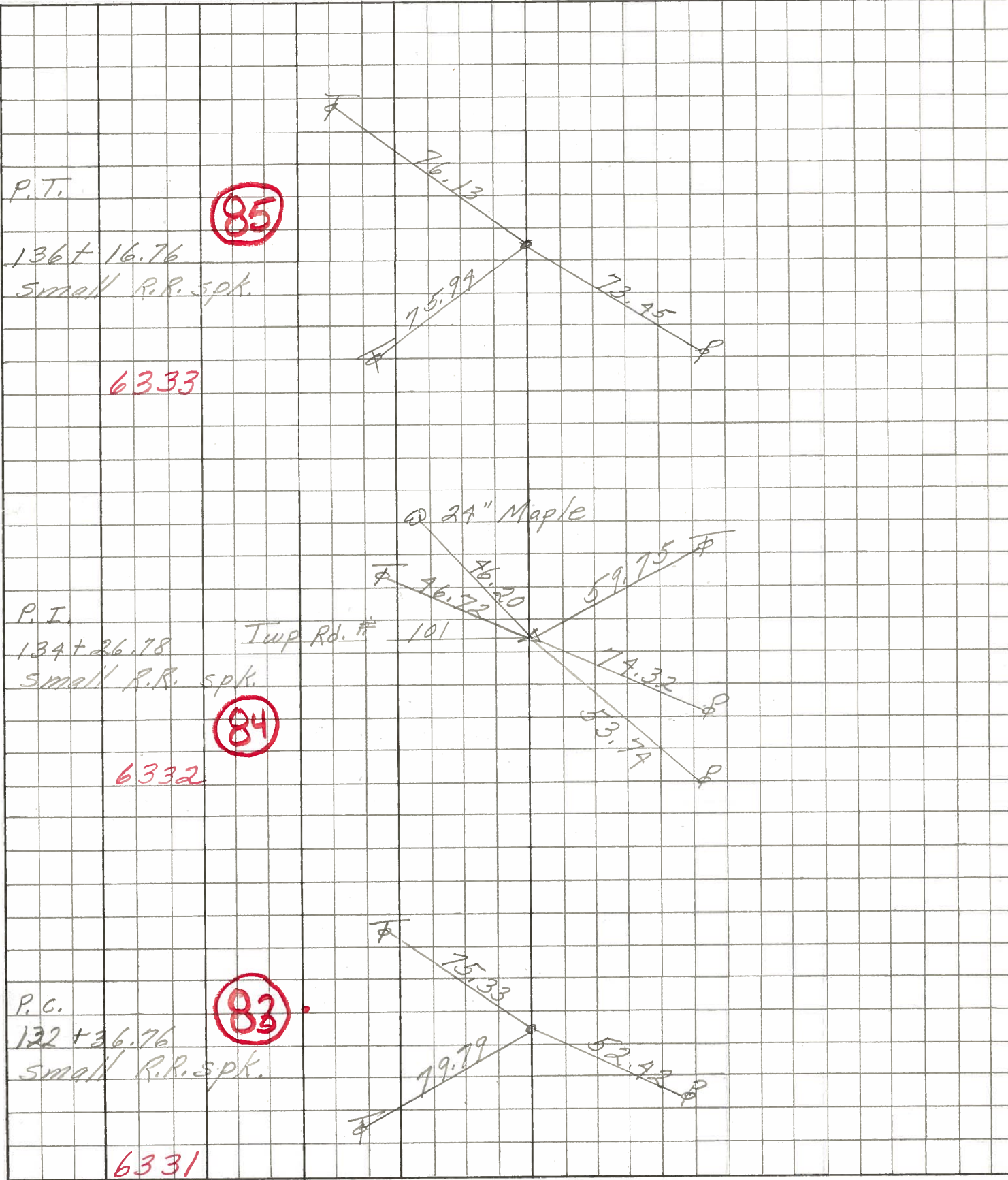


P.O.  
132+36.76  
small R.R. spk.

83



PERSONNEL TITLE PERSONNEL TITLE COUNTY OFF DATE Aug. 1  
 MASSER \_\_\_\_\_ S. R. 16 WEATHER \_\_\_\_\_  
 BARBOUR \_\_\_\_\_ SEC. Oak Harbor-East TEMP. \_\_\_\_\_  
 REDDING \_\_\_\_\_ DESCRIPTION Ties for Control Points JOB NO. \_\_\_\_\_



6333

6332

6331

PERSONNEL	TITLE	PERSONNEL	TITLE	COUNTY	DATE	WEATHER	TEMP
Krabill				Ottawa	2-19-64		
Kawaleski				S. R. # 163			
Geyman				SEC. F 2 (pt.)			
Bruggeman							

DESCRIPTION \_\_\_\_\_ LEFT \_\_\_\_\_ CENTER LINE \_\_\_\_\_ RIGHT \_\_\_\_\_ JOB NO. \_\_\_\_\_

