

O.D.O.T. DISTRICT 2 SURVEY OFFICE (USE ONLY)

PERSONNEL

REFERENCE NO. 84

SHEET 53 OF 74

NOTES JAMES

DATE 1-8-19

ROUTE SR 163

H.C. LEU

WEATHER CLOUDY

COUNTY OTTAWA

R.C. MILLER

TEMP. 52°

TOWNSHIP SALEM

SECTION 2

DWG BY JAMES

PID 95757

T 6 N R 15 E

TYPE MONUMENT MAG/WASHER

ON SURFACE - ~~BELOW~~ ON

OFFSET C PAVEMENT 2.5' ~~LT~~ : RT

- TO - EDGE PAVEMENT

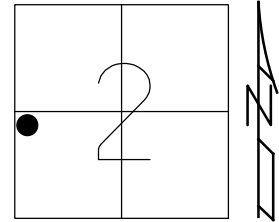
STATION: 860+00

HORZ. DATUM: NAD83 2011

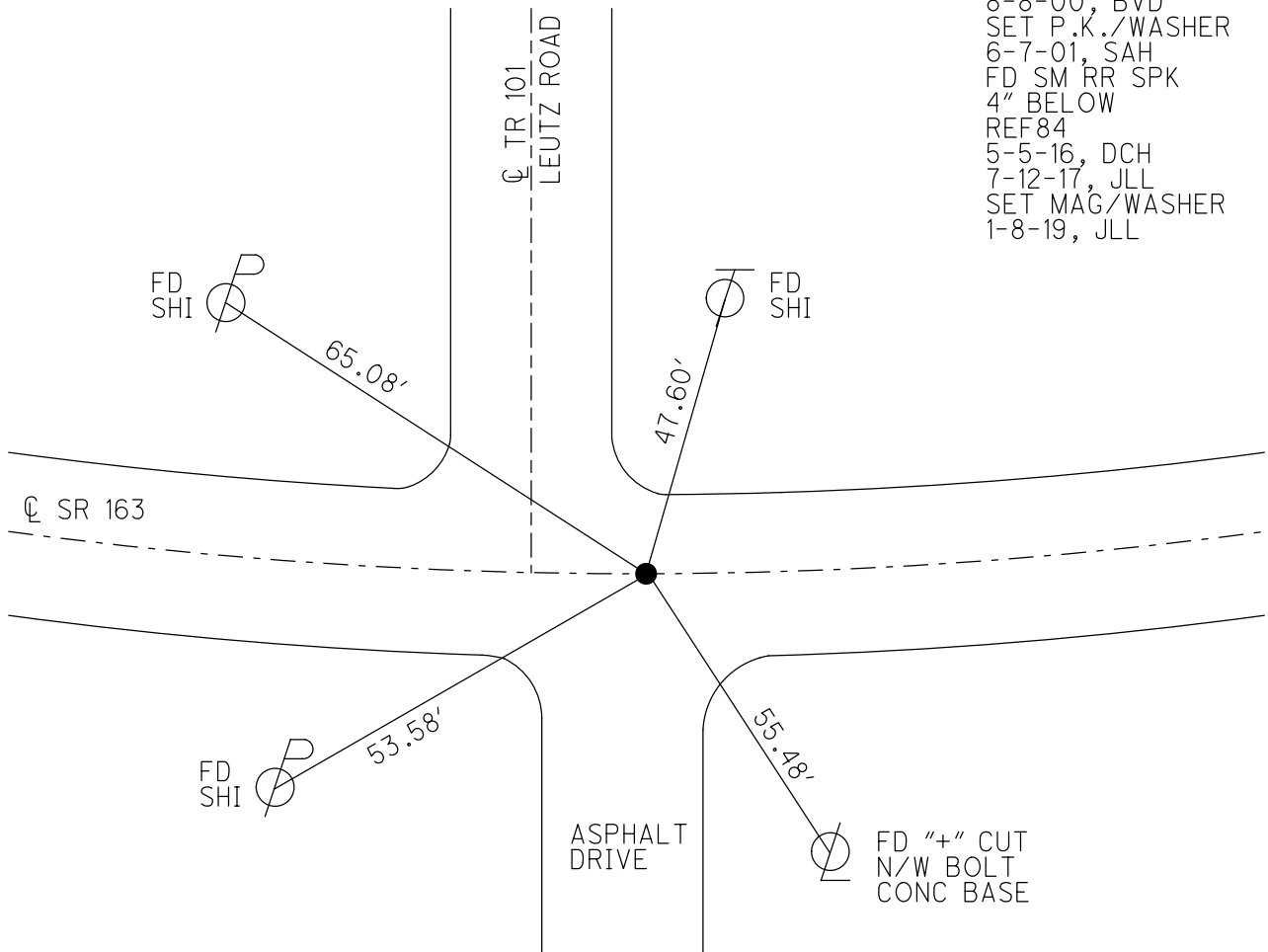
GEOID: NAVD88 2012A

GRID: NORTHING: 671151.557

EASTING: 1802391.828



RECORD: P.I.
 $\Delta = 1^\circ 54' \text{ RT}$
 STA 134+26.78
 FD P.K./WASHER
 8-8-00, BVD
 SET P.K./WASHER
 6-7-01, SAH
 FD SM RR SPK
 4" BELOW
 REF84
 5-5-16, DCH
 7-12-17, JLL
 SET MAG/WASHER
 1-8-19, JLL



O.D.O.T. DISTRICT 2 SURVEY OFFICE

PERSONNEL

REFERENCE NO. 84

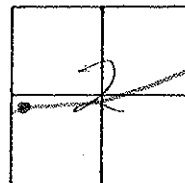
SHEET 43 OF 63

NOTES Condes
 H.C. Van Wusem
 R.C. Karger
Brown F

DATE 8-8-00
 WEATHER Fair
 TEMP. 80°

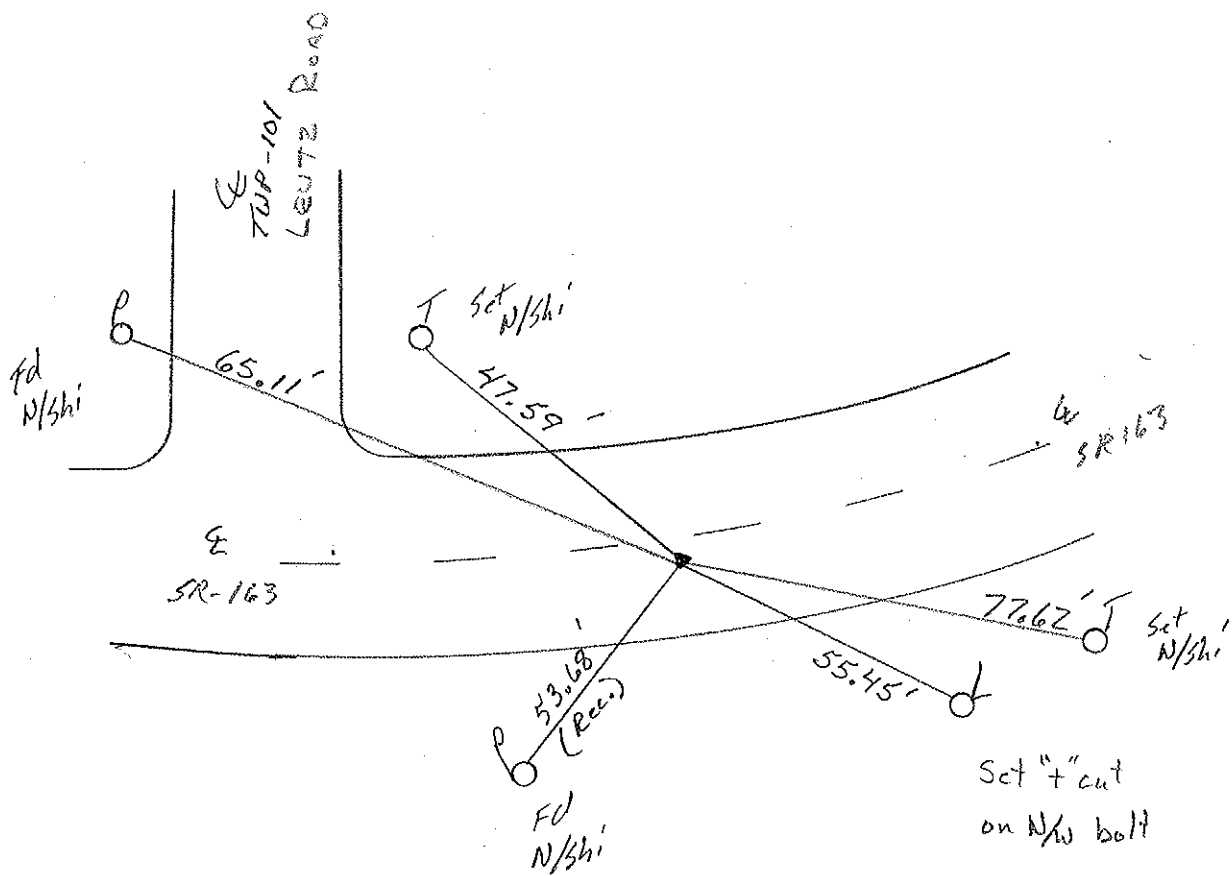
ROUTE 163
 COUNTY Ottawa
 TOWNSHIP Salon
 SECTION 2
T 6 N R 15 E

TYPE MONUMENT PK/w
~~ON SURFACE~~ - BELOW 3" below
~~LEFT OF PAVT.~~ - RIGHT 2.5' Rt.
TO EDGE PAVEMENT
 S.L.M. 860+00



Record; PI
 $\Delta = 01^\circ 54' 00''$ Lt.
 Plan Sta 134 + 26.78

SET PK & WASHER
 6-7-01
 JAH



O.D.O.T. DISTRICT 2 SURVEY OFFICE

PERSONNEL

REFERENCE NO. 84

SHEET 35 OF

NOTES Cranin

DRAWN 7/06/88

H.C. Ripple

DATE 9-27-90

R.C. BARBOUR

WEATHER Sunny

Geyman

TEMP. 70°

ROUTE #163

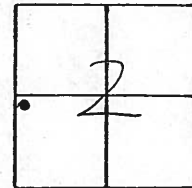
COUNTY Ottawa

TOWNSHIP Salem

SECTION 2

T. 6 N R. 15 E

TYPE MONUMENT We dug Retired
 ON SURFACE - BELOW Small R/k Spike 3" down
 LEFT - ℄ PAV'T. - RIGHT 2.5' RT℄
 TO EDGE PAVEMENT
 S.L.M. Sta. 134+26.78



P.I.
 $\Delta = 01^{\circ}54'00''$ Lt. Plan

Twp #101
 LEUTZ RD.

47.05

65.16

53.68

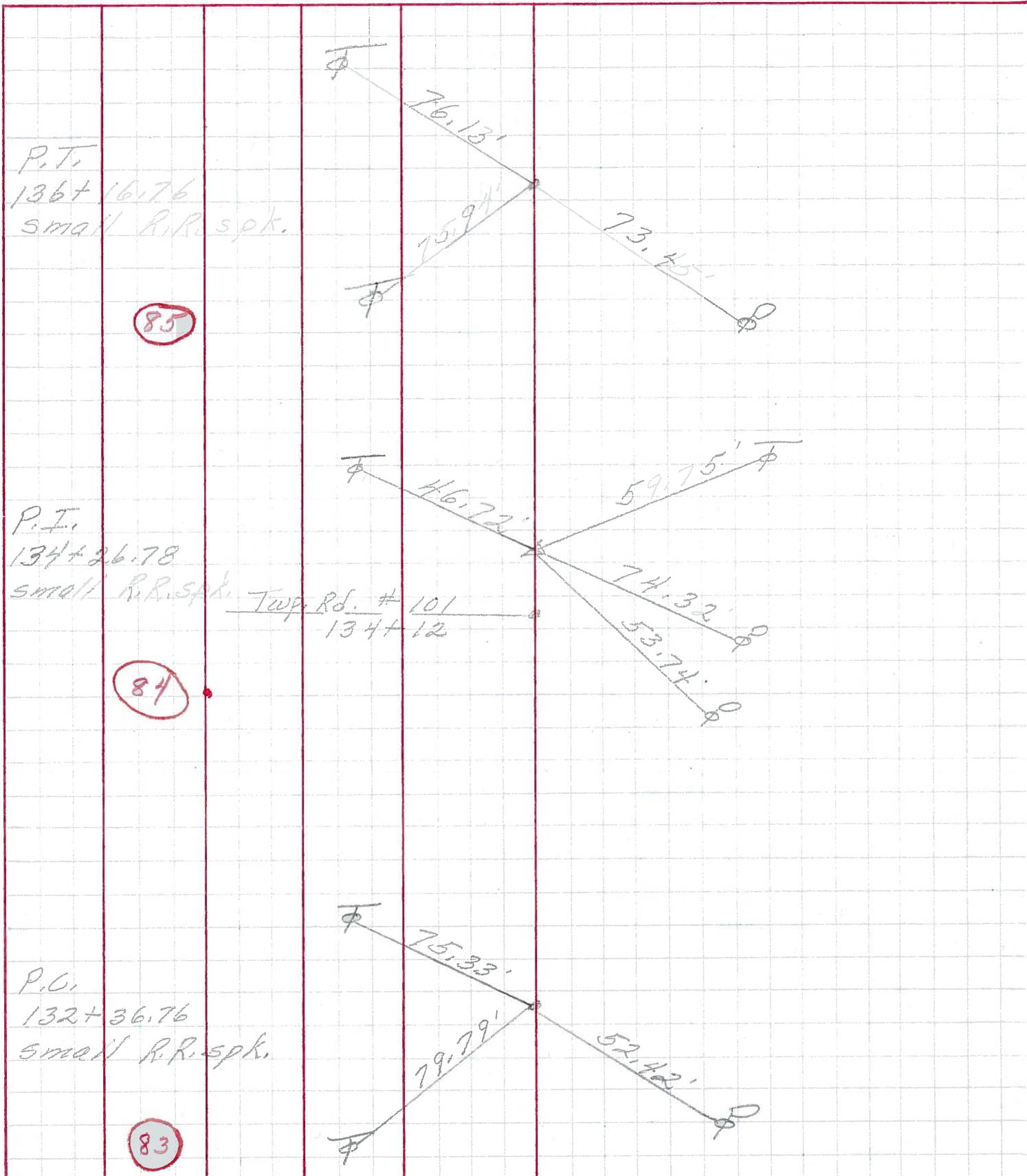
R/W or Sup??



PERSONNEL	TITLE	PERSONNEL	TITLE

COUNTY Ottawa DATE March 1972
 S. R. 163 WEATHER _____
 SEC. Oak Harbor-East TEMP. _____

DESCRIPTION sec 362 solemn Twp. JOB NO. _____



PERSONNEL TITLE PERSONNEL TITLE

Schneider Potts

Masser

Barbour

Redding

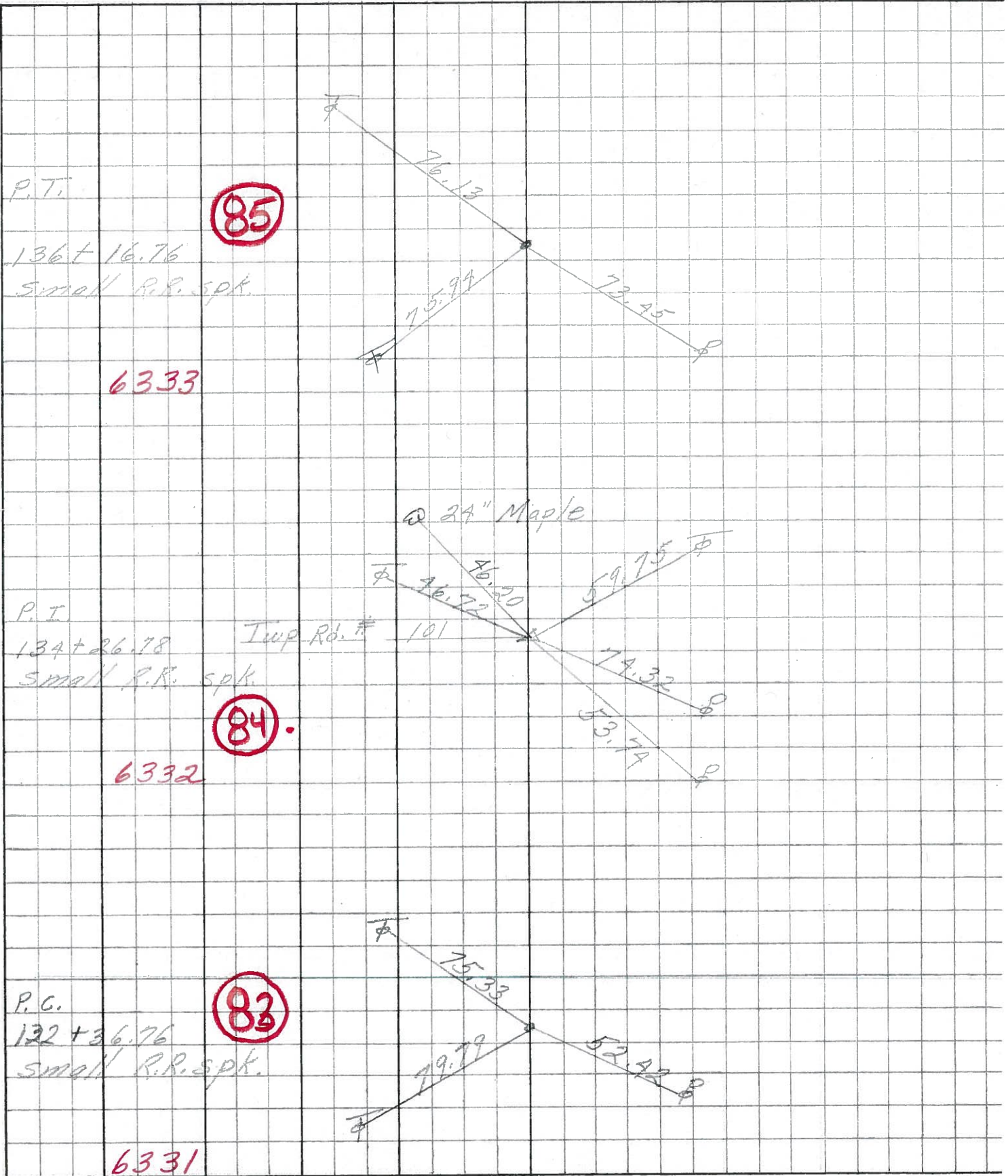
COUNTY Ottawa DATE Aug. 1968

S. R. 163 WEATHER

SEC. Oak Harbor-East TEMP.

DESCRIPTION Ties for Control Points JOB NO.

LEFT CENTER LINE RIGHT

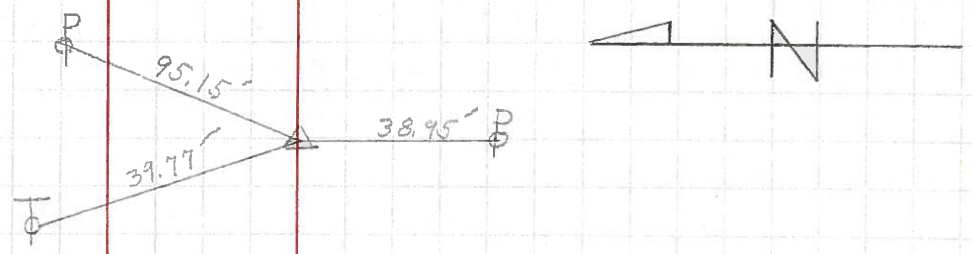


PERSONNEL	TITLE	PERSONNEL	TITLE	COUNTY	DATE	WEATHER	TEMP
Krabill				Ottawa	2-19-64		
Kawaleski				# 163			
Geyman							
Bruggeman				F 2 (pt.)			

DESCRIPTION _____ LEFT _____ CENTER LINE _____ RIGHT _____ JOB NO. _____

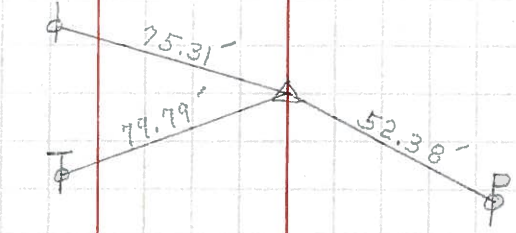
STA. 125+50.71
R.R. Spike #28
P.T.

82



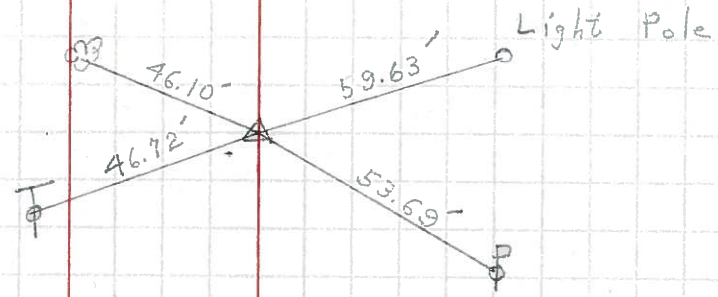
STA. 132+36.76
R.R. Spike #29
P.C.

83



STA. 134+26.78
R.R. Spike #30
P.I.

84



STA. 136+16.76
R.R. Spike #31
P.T.

85

