

O.D.O.T. DISTRICT 2 SURVEY OFFICE (USE ONLY)

PERSONNEL

REFERENCE NO. 85

SHEET 54 OF 74

NOTES CORDES

DATE 8-8-00

ROUTE SR 163

H.C. VANDUSEN

WEATHER FAIR

COUNTY OTTAWA

R.C. KARGER

TEMP. 80°

TOWNSHIP SALEM

SECTION 2

DWG BY JAMES

PID 95757

T 6 N R 15 E

TYPE MONUMENT P.K./WASHER

ON SURFACE - ~~BELOW~~ ON

OFFSET C PAVEMENT 0.7' ~~LT~~ : RT

10.2' TO RT EDGE PAVEMENT

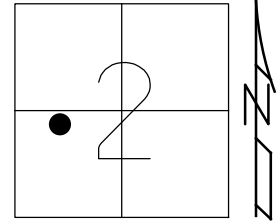
STATION: 862+18

HORZ.DATUM: NAD83 2011

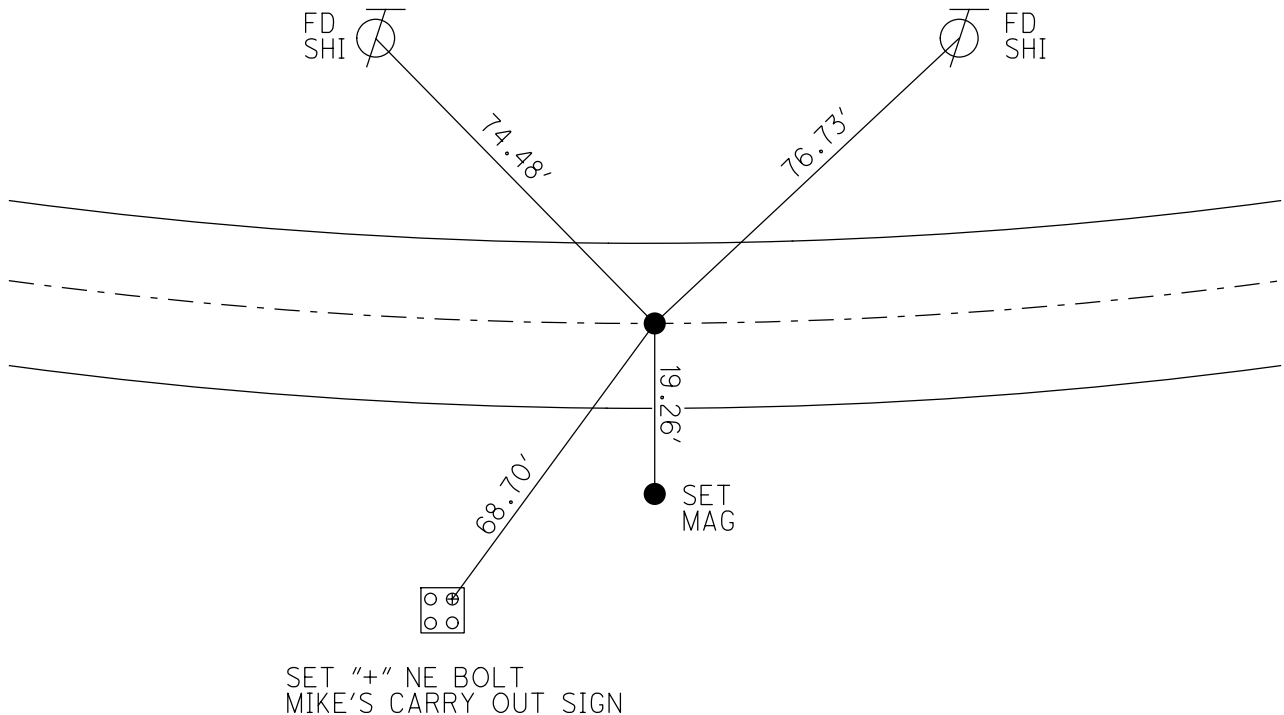
GEOID: NAVD88 2012A

GRID: NORTHING: 671172.796

EASTING: 1802580.622



RECORD: P.T.
 STA 136+16.76
 FD P.K./WASHER
 8-8-00, BVD
 SET P.K./WASHER
 6-7-01, SAH
 FD P.K./WASHER
 REF85
 5-5-16, DCH
 7-12-17, JLL
 SET MAG/WASHER
 1-8-19, JLL



O.D.O.T. DISTRICT 2 SURVEY OFFICE

PERSONNEL

REFERENCE NO. 05

SHEET 44 OF 63

NOTES Cordes

H.C. Van Wassen

R.C. Kanger

DATE 8-8-00

WEATHER Fair

TEMP. 80°

ROUTE 163

COUNTY Ottawa

TOWNSHIP Salmon

SECTION 2

T. 6 N. R. 15 E.

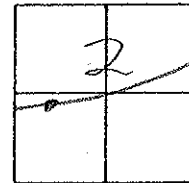
TYPE MONUMENT PK/w

~~ON SURFACE~~ - ~~BELOW~~ Swft.

~~1.5' RT~~ - RIGHT 1.5' Rt

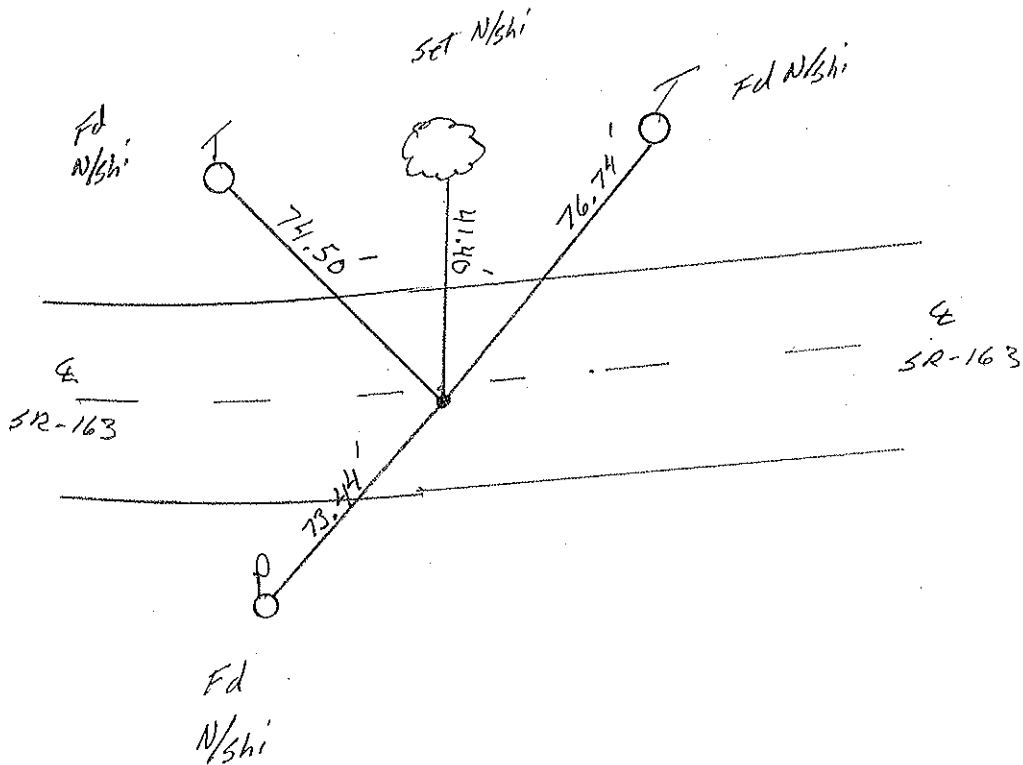
9.7 TO Rt. EDGE PAVEMENT

S.L.M. 862+18



Record: PT
Plan Sta = 136+16.76

SET PK& WASHER
 6-7-01
 SAH



O.D.O.T. DISTRICT 2 SURVEY OFFICE

PERSONNEL

REFERENCE NO. 85

SHEET 36 OF

NOTES Cronin

H.C. Ripple

R.C. Barbour

Geyman

DATE 9-27-90

WEATHER Sunny

TEMP. 73°

ROUTE 163

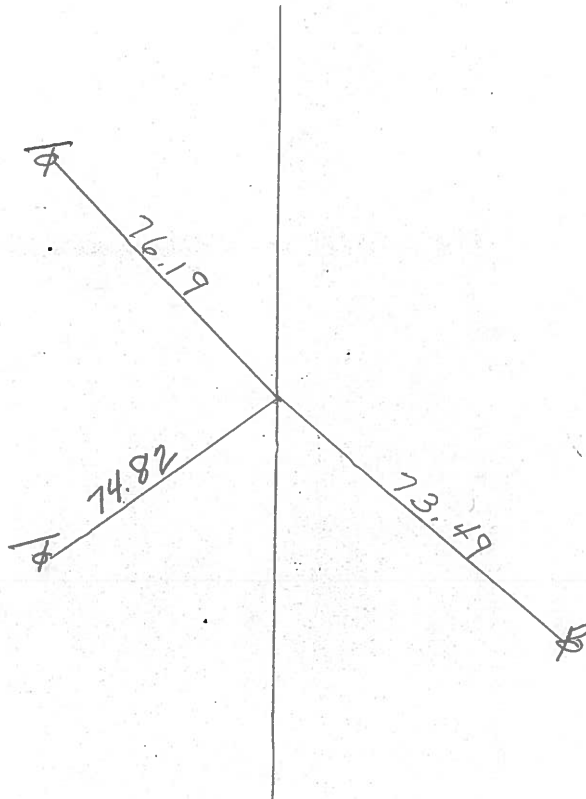
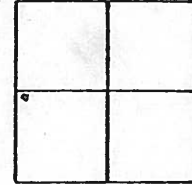
COUNTY OTAWA

TOWNSHIP SALEM

SECTION 2

T6 N R 15 E

TYPE MONUMENT Need To Dig Ties did not hit
ON SURFACE - BELOW Small R/R Spike 3" down
LEFT - & PAV'T. - RIGHT .8 RT. &
TO EDGE PAVEMENT
S.L.M. 136 + 16.76



P.T.

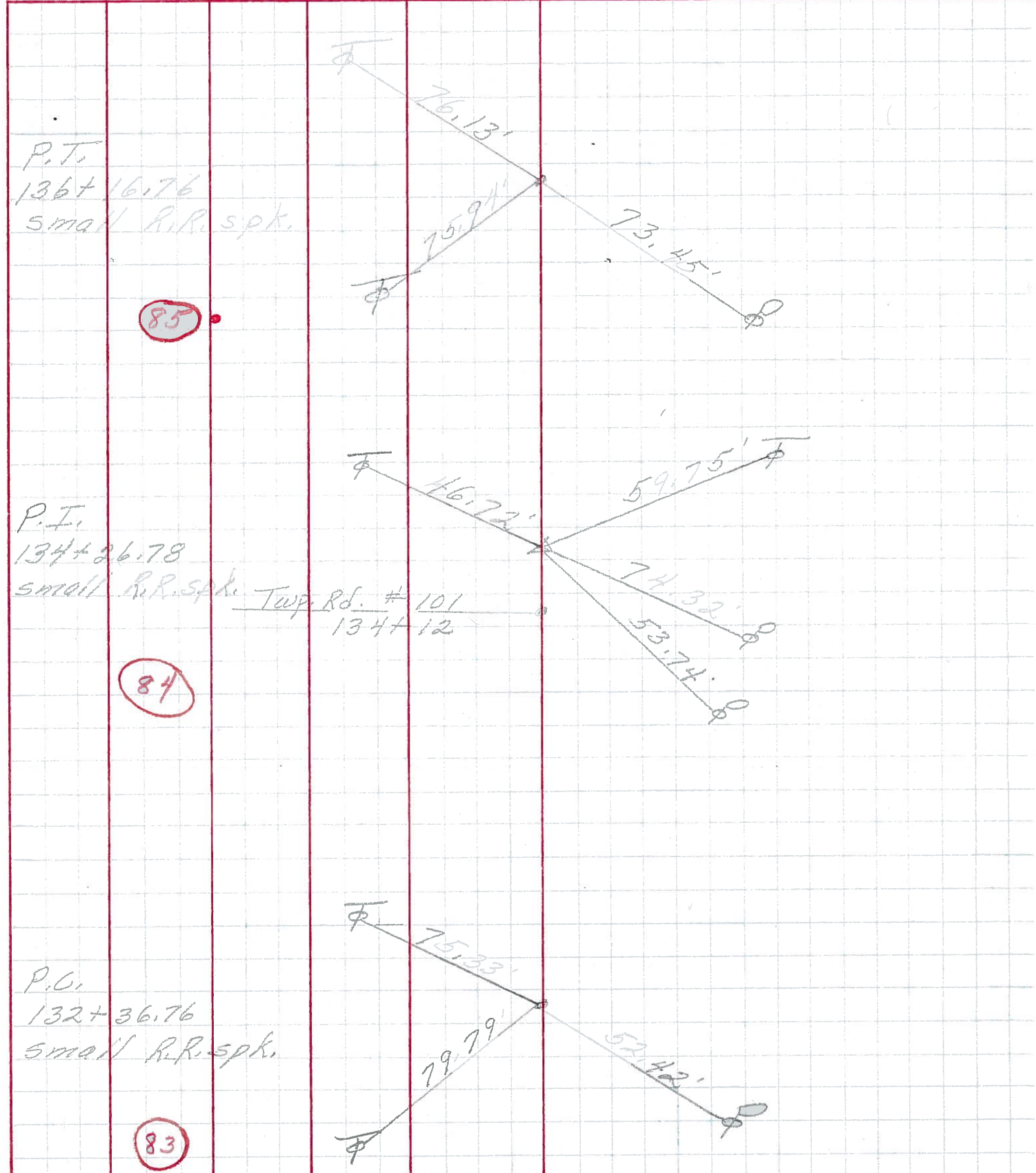
PERSONNEL TITLE PERSONNEL TITLE

COUNTY Ottawa DATE March 1972

S. R. 163 WEATHER

SEC. Oak Harbor-East TEMP.

DESCRIPTION sec 362 solem Twp. JOB NO.



P.T.
136+16.76
small R.R. spike.

85

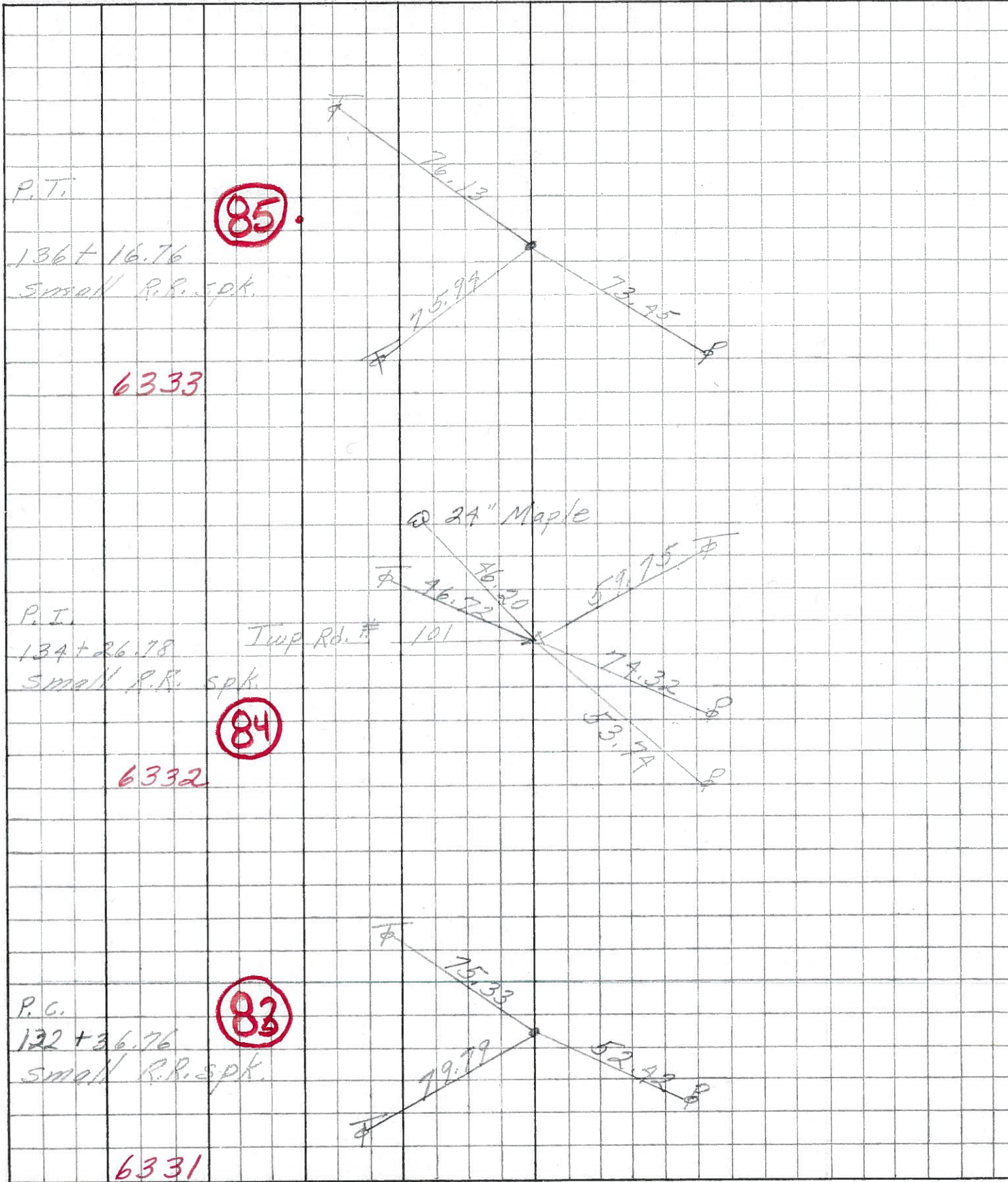
P.T.
134+26.78
small R.R. spike
Twp. Rd. # 101
134+12

84

P.O.
132+36.76
small R.R. spike.

83

PERSONNEL	TITLE	PERSONNEL	TITLE	COUNTY	DATE
<u>Schneider</u>		<u>Potts</u>		<u>Ottawa</u>	<u>Aug. 1968</u>
<u>Mosser</u>				S. R. <u>163</u>	WEATHER
<u>Barbour</u>				SEC. <u>Sak Harbor-East</u>	TEMP.
<u>Rebding</u>					
DESCRIPTION	<u>Ties for Control Points</u>			JOB NO.	
	LEFT	CENTER LINE	RIGHT		



PERSONNEL TITLE PERSONNEL TITLE

Krabill
Kowaleski
Geyman
Bruggeman

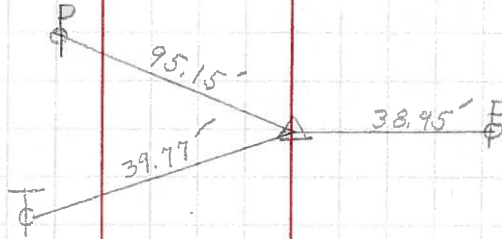
COUNTY Ottawa
S. R. # 163
SEC. F 2 (pt.)

DATE 2-19-64
WEATHER
TEMP

DESCRIPTION LEFT CENTER LINE RIGHT JOB NO.

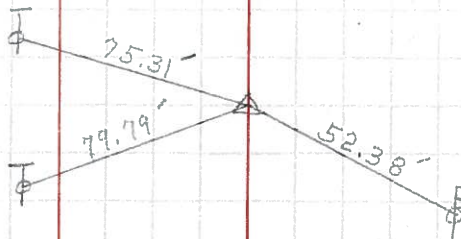
STA. 125+50.71
R.R. Spike
P.T. #28

82



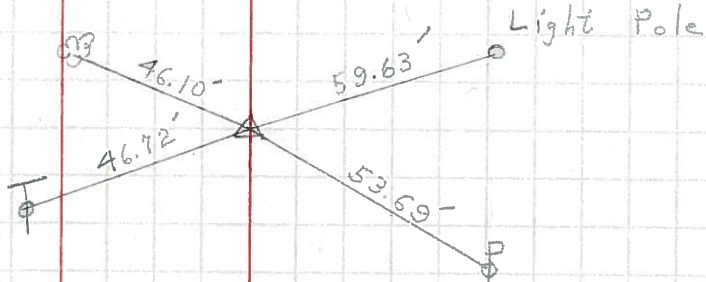
STA. 132+36.76
R.R. Spike
P.C. #29

83



STA. 134+26.78
R.R. Spike
P.I. #30

84



STA. 136+16.76
R.R. Spike #31

85

