

O.D.O.T. DISTRICT 2 SURVEY OFFICE (USE ONLY)

PERSONNEL

REFERENCE NO. 86 A

SHEET 56 OF 74

NOTES NUHFER

DATE 7-12-17

ROUTE SR 163

H.C. LEU

WEATHER FAIR

COUNTY OTTAWA

R.C. CARSON

TEMP. 85°

TOWNSHIP SALEM

DWG BY JAMES

PID 95757

SECTION 2

T 6 N R 15 E

TYPE MONUMENT P.K./WASHER

ON SURFACE - ~~BELOW~~ ON

OFFSET  $\text{C}$  PAVEMENT 1.7' LT : ~~RT~~

- TO - EDGE PAVEMENT

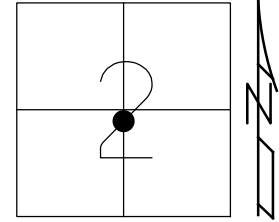
STATION: 887+46

HORIZ.DATUM: NAD83 2011

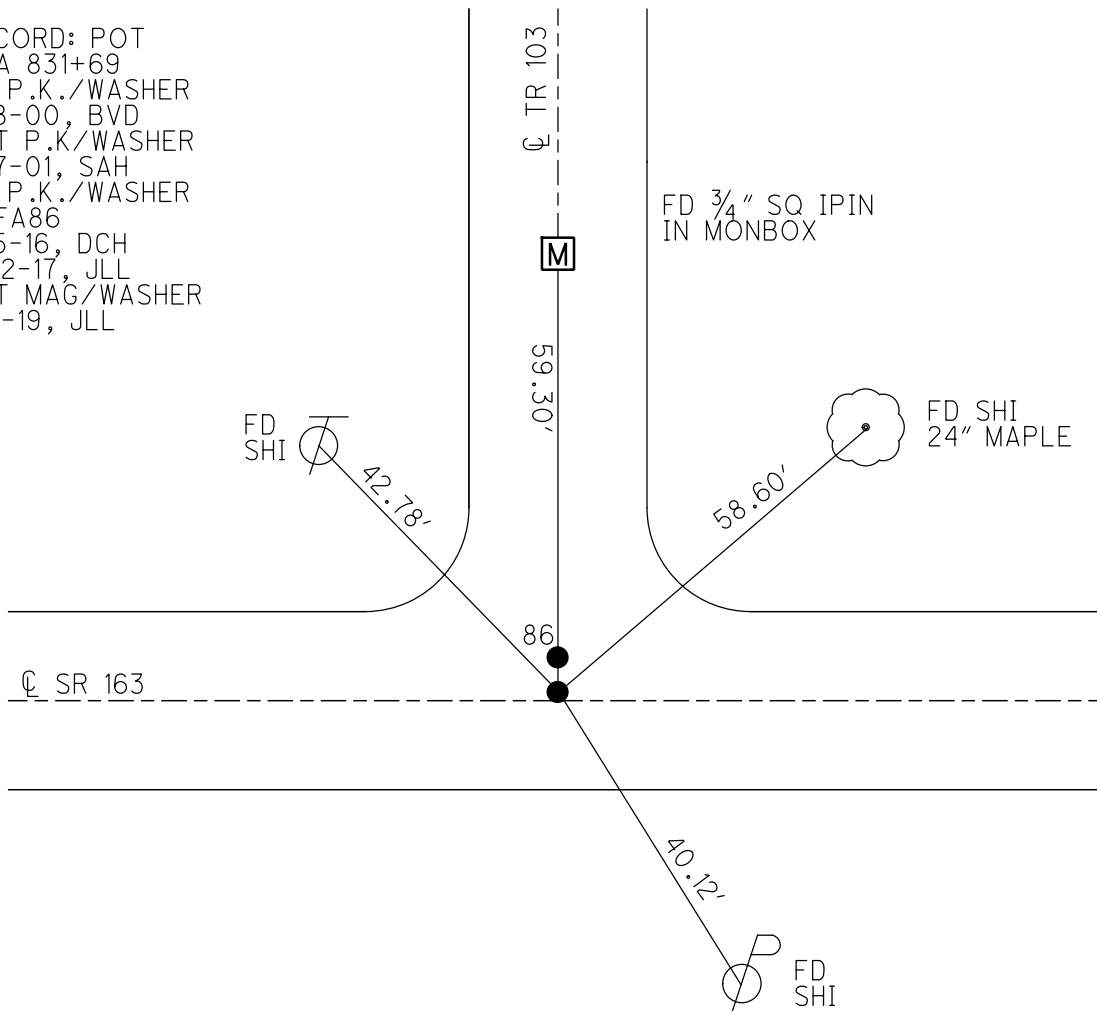
GEOID: NAVD88 2012A

GRID: NORTHING: 671448.312

EASTING: 1805028.448



RECORD: POT  
 STA 831+69  
 FD P.K./WASHER  
 8-8-00, BVD  
 SET P.K./WASHER  
 6-7-01, SAH  
 FD P.K./WASHER  
 REFA86  
 5-5-16, DCH  
 7-12-17, JLL  
 SET MAG/WASHER  
 1-8-19, JLL



DIST. 86-86A = 1.27'

# O.D.O.T. DISTRICT 2 SURVEY OFFICE

PERSONNEL

REFERENCE NO. 86

SHEET 45 OF 63

NOTES Condors

H.C. VanDusen

DATE 8-8-00

ROUTE 163

R.C. Kanger

WEATHER Fair

COUNTY Ottawa

Brown P

TEMP. 85°F

TOWNSHIP Salmon

SECTION 2

T. 6 N. R. 15 E

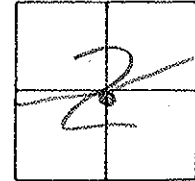
TYPE MONUMENT PK/w (both points)

ON SURFACE - ~~BELOW~~ Surface

LEFT - & PAV'T. - RIGHT (A) 0.8' Lt. (B) 1.29' Lt.

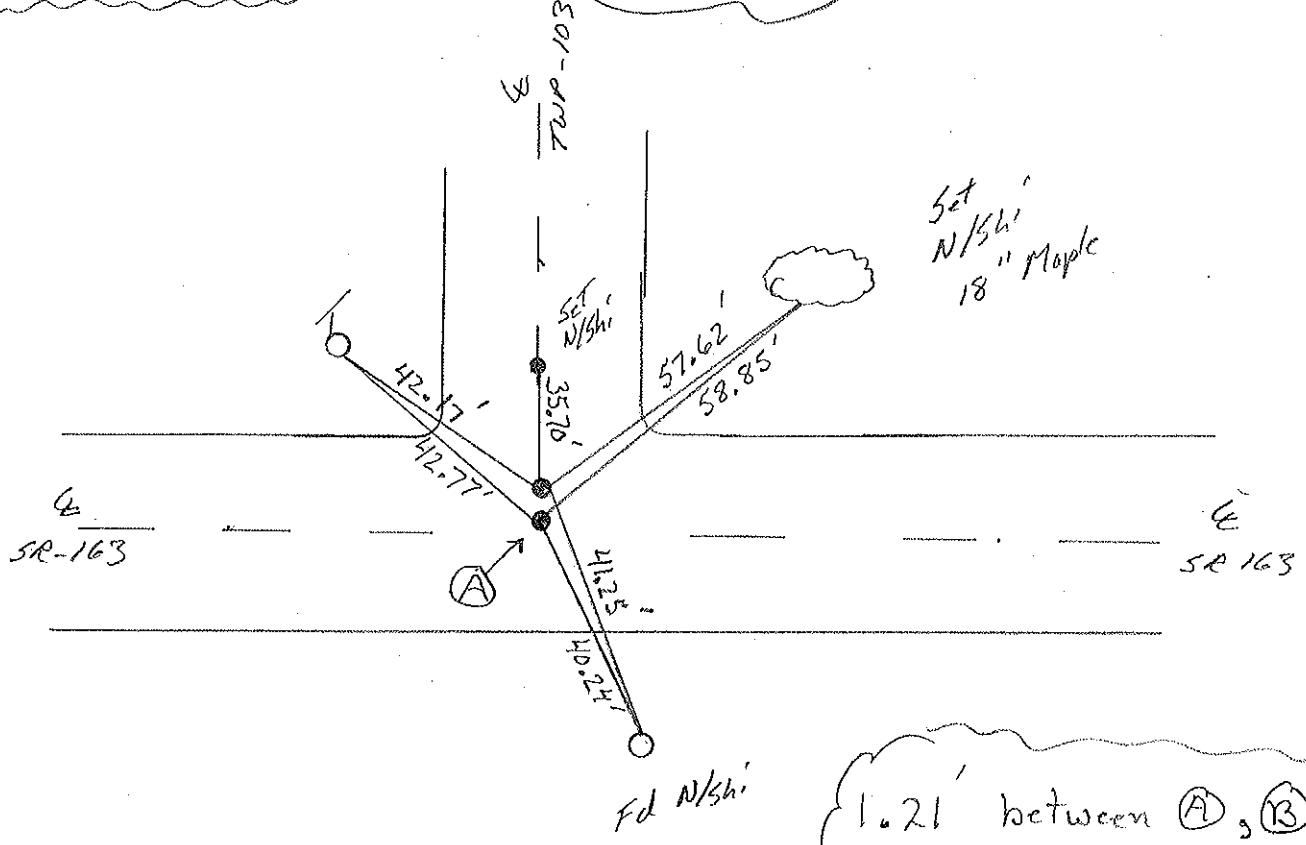
TO EDGE PAVEMENT

S.L.M. (A) + (B) = 887 + 46



Recond: Pot  
 PK/w 1.55' Lt of & Const.  
 Go 145' N. for & Surv.  
 and R/w Plan Sta 831+69

SET PK & WASHER  
 6-7-01  
 SAH



# O.D.O.T. DISTRICT 2 SURVEY OFFICE

PERSONNEL

REFERENCE NO. 86

SHEET 37 OF     

NOTES CRONIN

H.C. Ripple

DATE 9-27-90

ROUTE 163

R.C. BARBOUR

WEATHER Sunny + Windy

COUNTY OTTAWA

GEYMAN

TEMP.     

TOWNSHIP SALEM

SECTION 2

T. 6 N. R. 15 E.

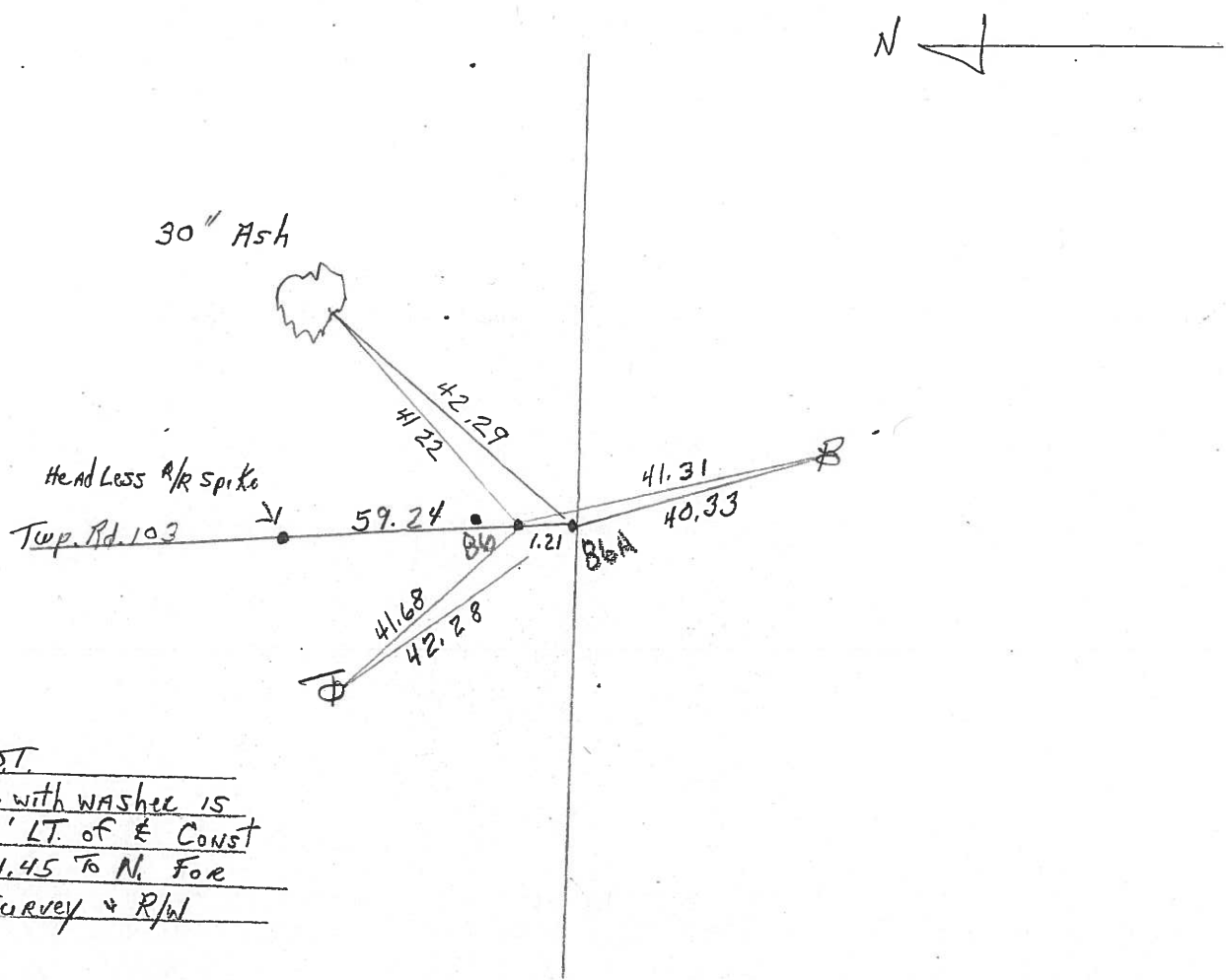
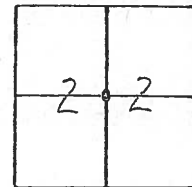
TYPE MONUMENT Set P.K. + Washer + P.K. + Washer

ON SURFACE - BELOW     

LEFT - & PAV'T. - RIGHT     

TO      EDGE PAVEMENT

S.L.M. 831 + 69



P.O.T.  
P.K. with washer is  
1.55' LT. of & Const  
Go 1.45 To N. For  
& Survey + R/W

PERSONNEL TITLE PERSONNEL TITLE

COUNTY Ottawa DATE March 1972

S. R. 163 WEATHER

SEC. Oak Harbor East TEMP.

DESCRIPTION Sec 2 Salem Twp. JOB NO.

