

O.D.O.T. DISTRICT 2 SURVEY OFFICE (USE ONLY)

PERSONNEL _____

REFERENCE NO. 87

SHEET 57 OF 74

NOTES CORDES

DATE 8-8-00

ROUTE SR 163

H.C. _____

WEATHER SUNNY

COUNTY OTTAWA

R.C. _____

TEMP. 80°

TOWNSHIP SALEM

SECTION 2

DWG BY JAMES

PID 95757

T 6 N R 15 E

TYPE MONUMENT 1" SQ PIN

ON SURFACE - BELOW _____

OFFSET \odot PAVEMENT 14' LT : RT

_____ TO _____ EDGE PAVEMENT

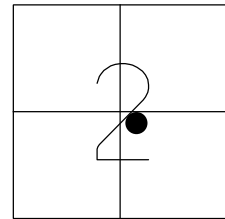
STATION: 898+96

HORZ. DATUM: _____

GEOID: _____

GRID: NORTHING: _____

EASTING: _____



RECORD:

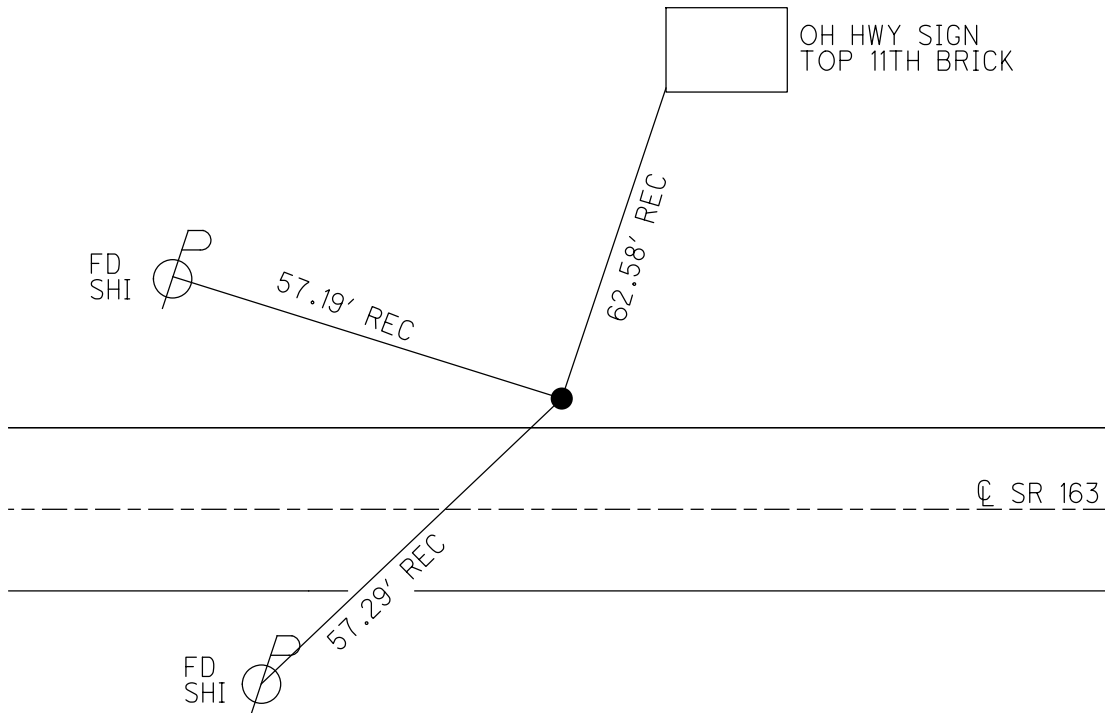
$\Delta = 16^{\circ} 17'30''$ LT

FD 1" SQ PIN

8-8-00, BC

DNF

5-5-16, DCH



O.D.O.T. DISTRICT 2 SURVEY OFFICE

PERSONNEL _____

REFERENCE NO. 87

SHEET 46 OF 63

NOTES COZDFS

H.C. _____

DATE 8-8-00

ROUTE 163

R.C. _____

WEATHER SUN

COUNTY OTTAWA

TEMP. 80°

TOWNSHIP SALEM

SECTION 2

T & N R I S E

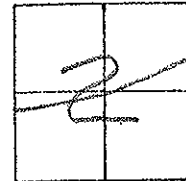
TYPE MONUMENT 1" SQ PIN

~~ON SURFACE~~ - BELOW ?

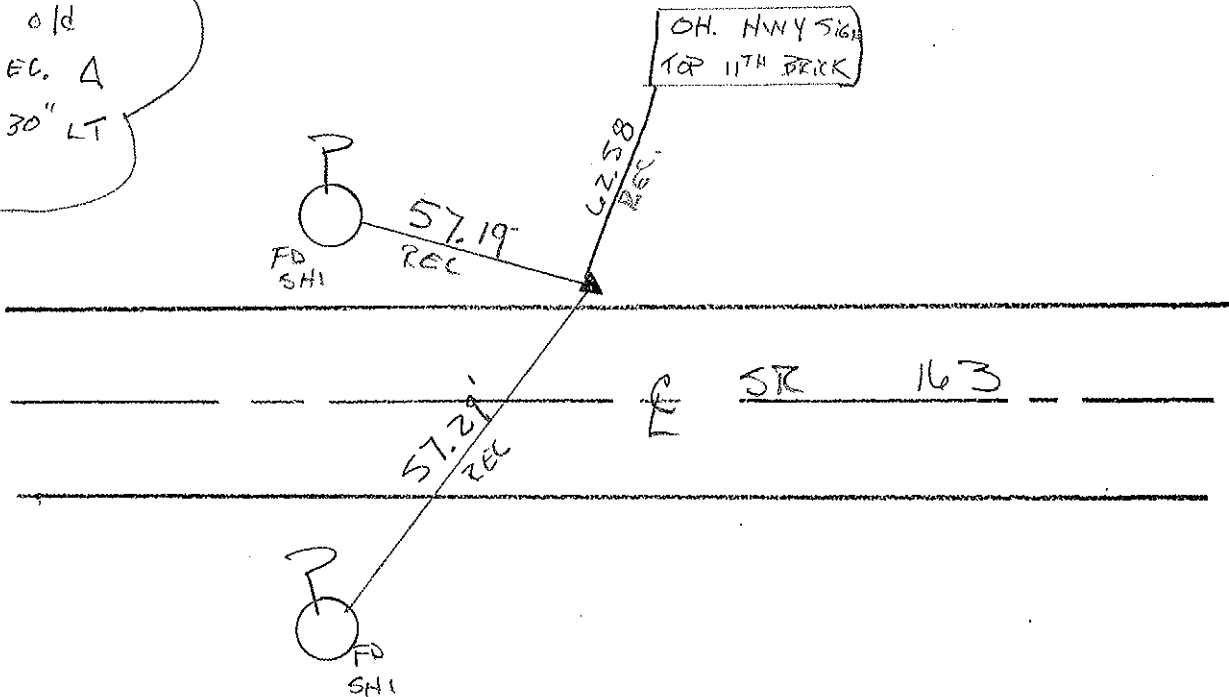
~~TO~~ - C. PAV'T. - RIGHT 14'

-8 TO LT. EDGE PAVEMENT

S.L.M. 890 + 96



NOTE:
POINT REMOVED
BY CONST. PK
SET BY OLD
TIES, REC. Δ
16°-17'-30" LT



O.D.O.T. DISTRICT 2 SURVEY OFFICE

PERSONNEL

REFERENCE NO. 387

SHEET 38 OF

NOTES CRONIN

H.C. Ripple

DATE 9-27-90

ROUTE 163

R.C. BARBOUR

WEATHER Sunny Windy

COUNTY OTTAWA

Geyman

TEMP. 70°

TOWNSHIP Salem

SECTION 2

T. 6 N. R. 15 E.

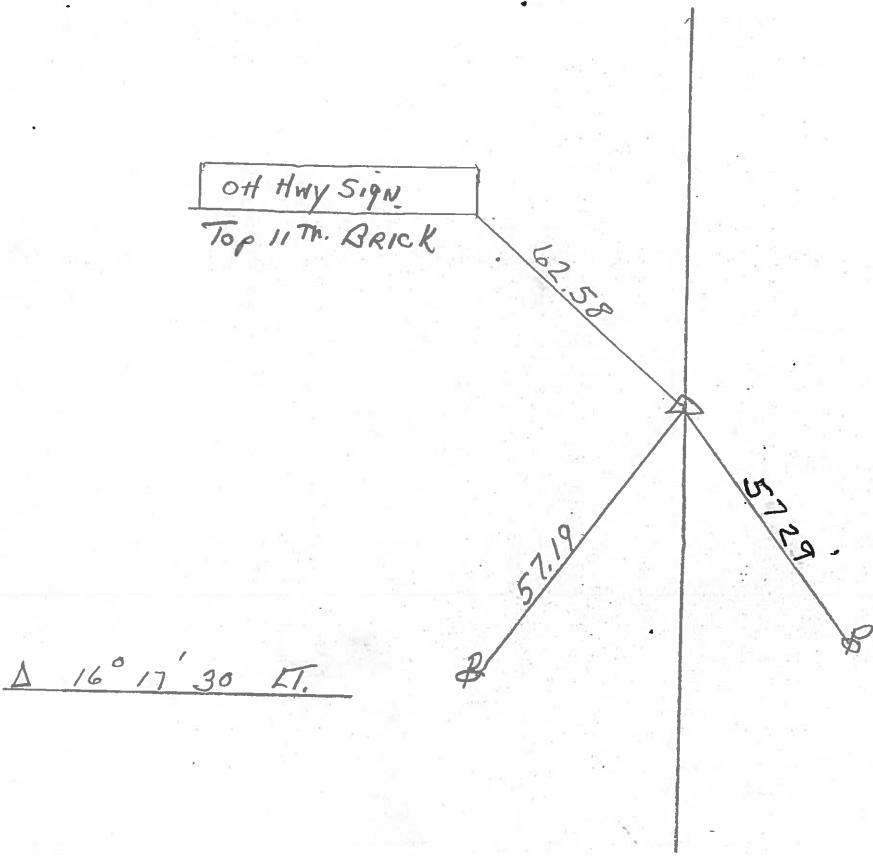
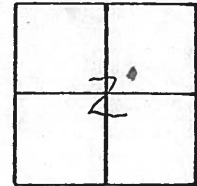
TYPE MONUMENT 1" Sq. Pin

ON SURFACE - BELOW

LEFT - & PAV'T. - RIGHT 14' RT & Pmnt.

TO EDGE PAVEMENT .8' off Edge BERM

S.L.M. 843 + 16.96



PERSONNEL TITLE PERSONNEL TITLE

COUNTY Ottawa

DATE March 1972

S. R. 163

WEATHER

SEC. Oak Harbor East

TEMP

DESCRIPTION Sec 2 Salem Twp.

JOB NO.

LEFT

CENTER LINE

RIGHT

