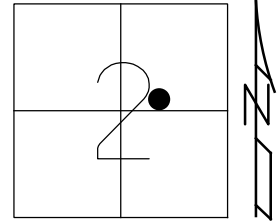


O.D.O.T. DISTRICT 2 SURVEY OFFICE (USE ONLY)

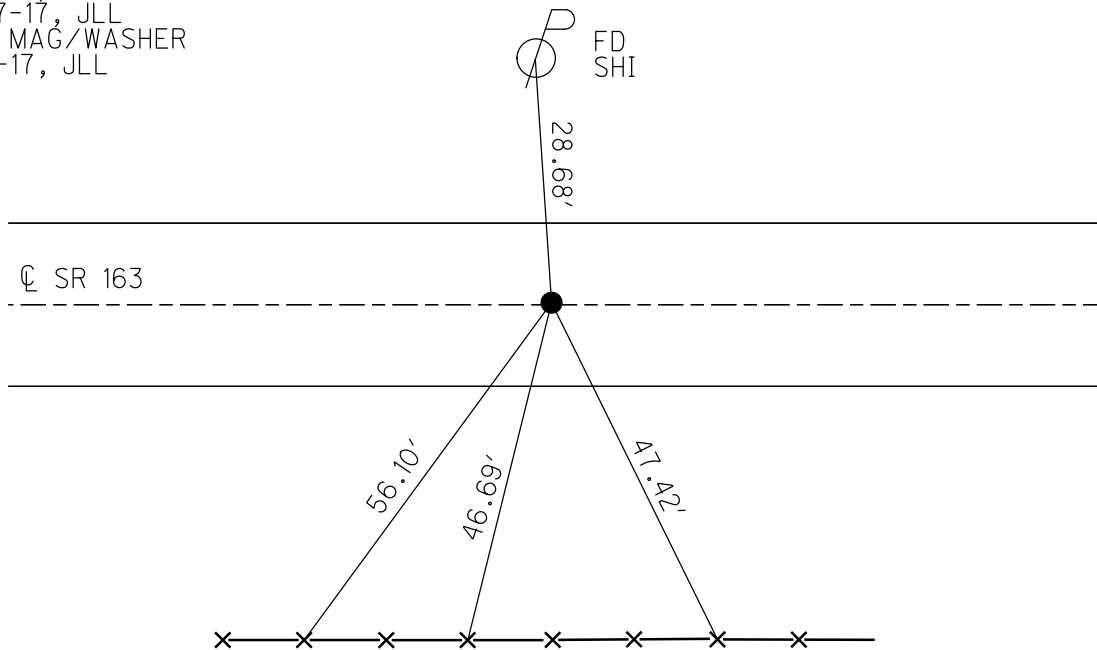
PERSONNEL _____ REFERENCE NO. 88 SHEET 58 OF 74
 NOTES HOMAN DATE 7-27-17 ROUTE SR 163
 H.C. LEU WEATHER CLOUDY COUNTY OTTAWA
 R.C. CARSON TEMP. 78° TOWNSHIP SALEM
 _____ SECTION 2
 DWG BY JAMES PID 95757 T 6 N R 15 E

TYPE MONUMENT P.K./WASHER
 ON SURFACE - ~~BELOW~~ ON
 OFFSET C PAVEMENT 3.0' LT : ~~RT~~
7.6' TO LT EDGE PAVEMENT
 STATION: 909+41



HORIZ.DATUM: NAD83 2011 GEOID: NAVD88 2012A
 GRID: NORTHING: 671978.420 EASTING: 1807129.316

RECORD: P.I.
 $\Delta = 2^\circ 27' \text{ LT}$
 STA 853+55.7
 FD P.K./WASHER
 10-11-00, BVD
 SET P.K./WASHER
 11-27-00, SAH
 FD P.K./WASHER
 REF88
 5-5-16, DCH
 7-27-17, JLL
 SET MAG/WASHER
 1-15-17, JLL



SET NOTCH
 $\pm 30''$ UP
 STEEL FEN POSTS
 OTT. CO. FAIRGROUNDS

O.D.O.T. DISTRICT 2 SURVEY OFFICE

PERSONNEL

REFERENCE NO. 88

SHEET 47 OF 63

NOTES CORDES/HUSS

H.C. VAN DUSEN

R.C. ROUSAS

DATE 10-11-00

WEATHER FAIR

TEMP. 50°

ROUTE 163

COUNTY OTTAWA

TOWNSHIP SALEM

SECTION 2

TOWN RISE

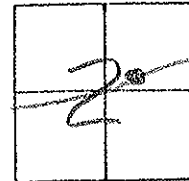
TYPE MONUMENT PK & WASHER

~~IN SURFACE~~ - BELOW 3"

LEFT-C PAV'T. - ~~3'~~ 3'

2.6 TO LT EDGE PAVEMENT

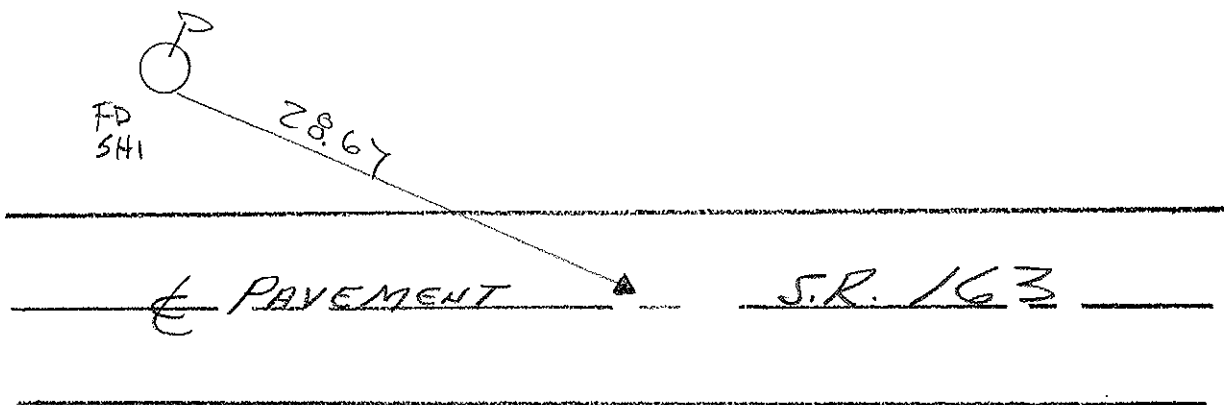
S.L.M. 909+41



REC A
Z-27 LT

853+55.7

SET
PK &
WASHER
11-27-00
SAH



O.D.O.T. DISTRICT 2 SURVEY OFFICE

PERSONNEL

REFERENCE NO. 88

SHEET 39 OF

NOTES Cronin

H.C. Ripple

R.C. BARBOUR

Geyman

DATE 9-27-90

WEATHER Sunny

TEMP. 80°

ROUTE 163

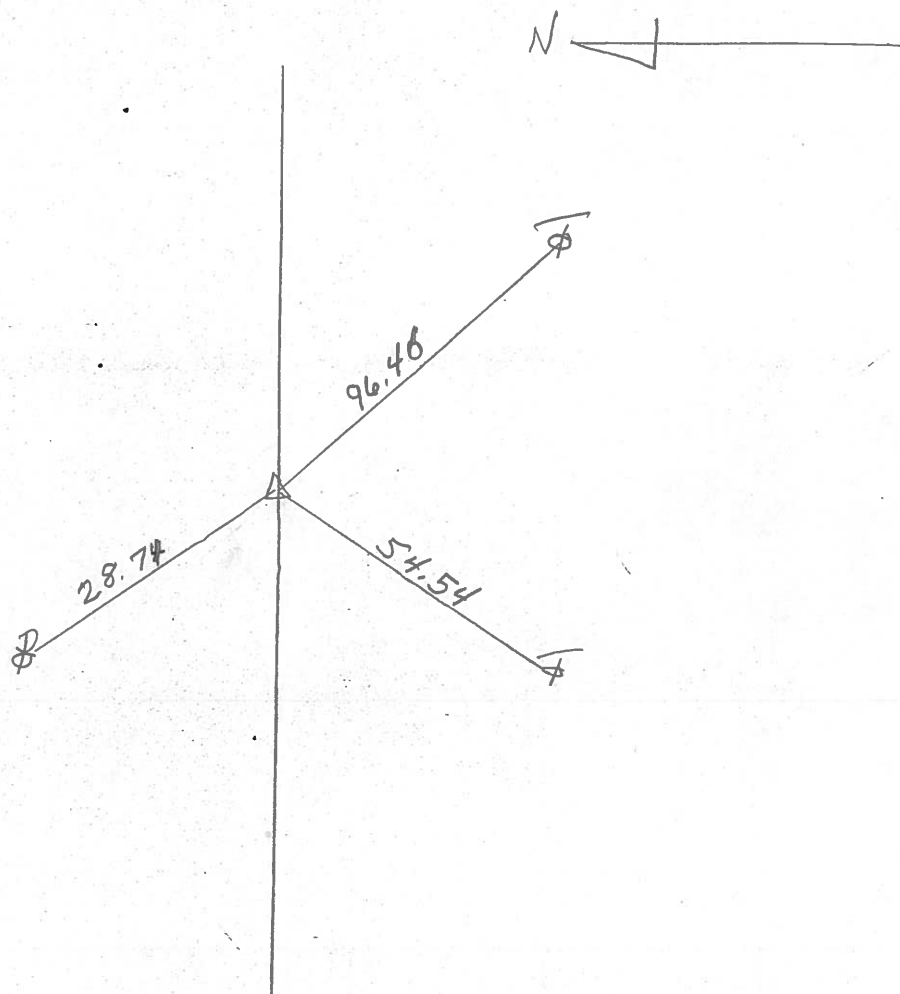
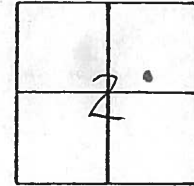
COUNTY OTTAWA

TOWNSHIP Salem

SECTION 2

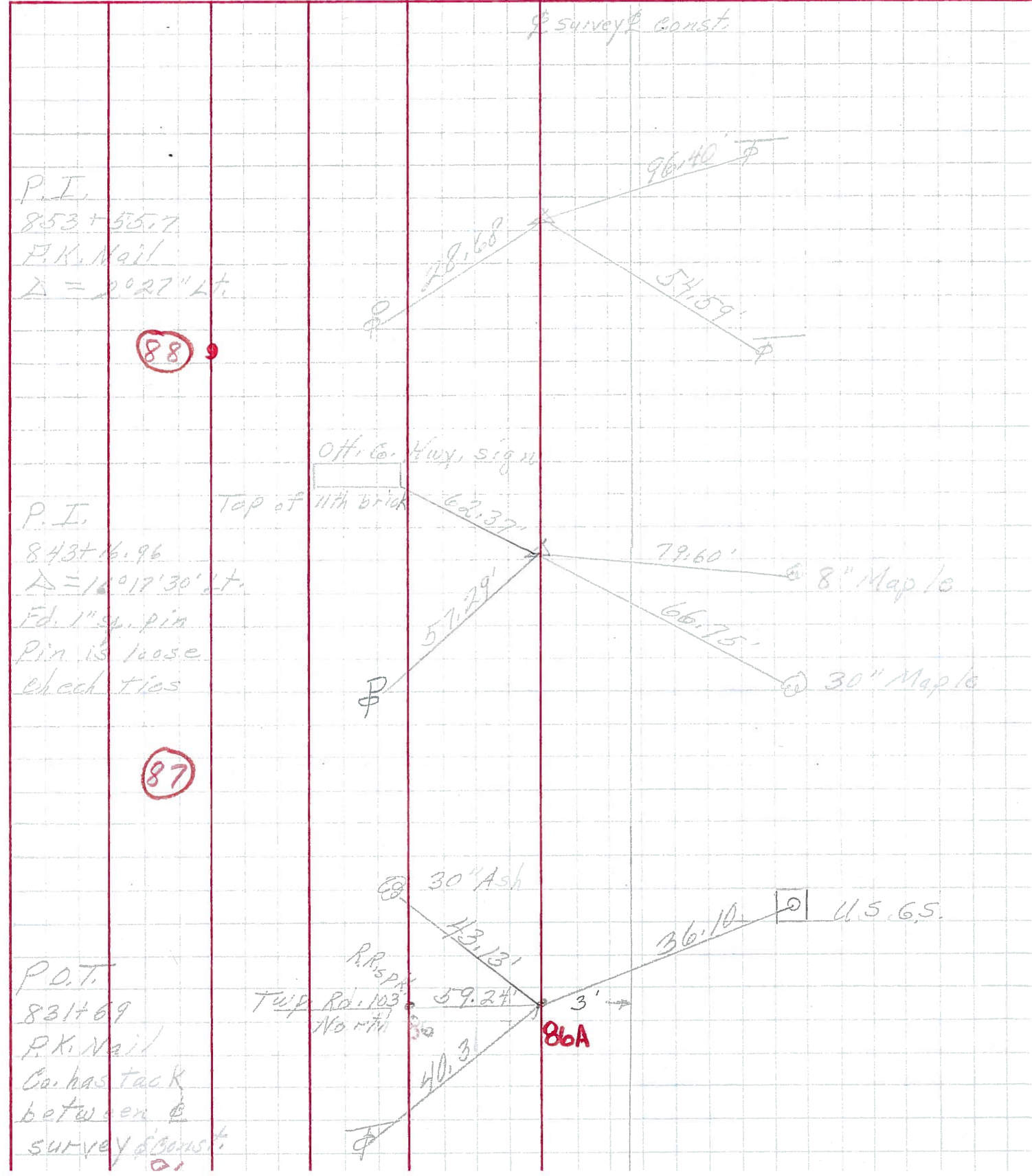
T. 6 N R. 15 E

TYPE MONUMENT Dug Retied
ON SURFACE - BELOW PK + WASHER 3" down
LEFT - ☉ PAV'T. - RIGHT 3' LT & P.V.M.T.
 TO EDGE PAVEMENT
S.L.M. 853 + 55.7



P.I. Δ 2° 27' LT

PERSONNEL _____ TITLE _____ PERSONNEL _____ TITLE _____
 COUNTY Ottawa DATE March 1972
 S. R. 163 WEATHER _____
 SEC. Oak Harbor East TEMP _____
 DESCRIPTION Sec 2 Salem Twp. JOB NO. _____



PERSONNEL TITLE PERSONNEL TITLE COUNTY Ottawa DATE 9-3-68
Schneider Potts
Mosser _____ S. R. 163 WEATHER Cloudy
Barbour _____ SEC. Oak Harbor - East TEMP. 70°
Redding _____
 DESCRIPTION Ties for Control Points JOB NO. _____

