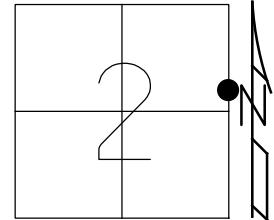


O.D.O.T. DISTRICT 2 SURVEY OFFICE (USE ONLY)

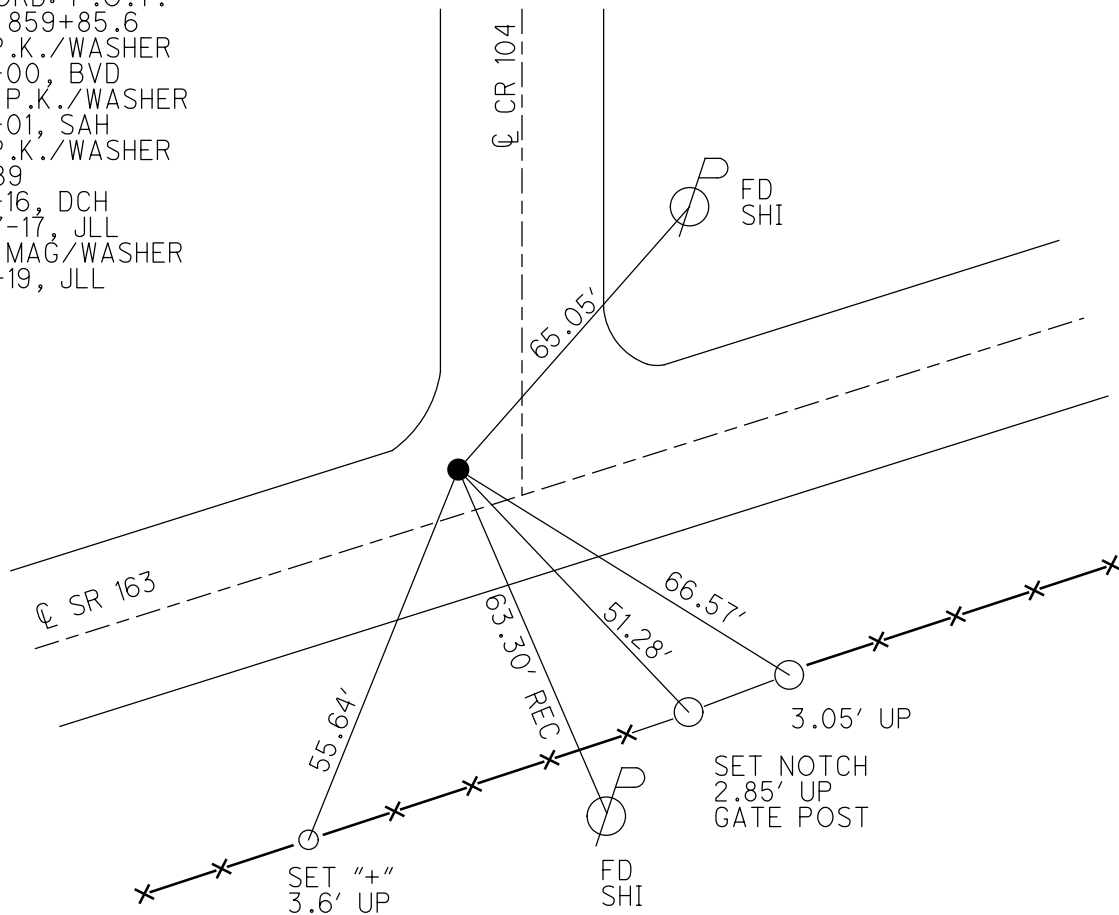
PERSONNEL	REFERENCE NO. <u>89</u>	SHEET <u>59</u> OF <u>74</u>
NOTES <u>HOMAN</u>	DATE <u>7-27-17</u>	ROUTE <u>SR 163</u>
H.C. <u>LEU</u>	WEATHER <u>CLOUDY</u>	COUNTY <u>OTTAWA</u>
R.C. <u>CARSON</u>	TEMP. <u>78°</u>	TOWNSHIP <u>SALEM</u>
DWG BY <u>JAMES</u>	PID <u>95757</u>	SECTION <u>2</u>
		T <u>6</u> N R <u>15</u> E

TYPE MONUMENT P.K./WASHER  
 ON SURFACE - ~~BELOW~~ ON  
 OFFSET  $\text{C}$  PAVEMENT 5.3', 7' LT CR 104 LT : RT  
6' TO LT EDGE PAVEMENT  
 STATION: 915+67



HORZ. DATUM: NAD83 2011      GEOID: NAVD88 2012A  
 GRID: NORTHING: 672244.546      EASTING: 1807694.015

RECORD: P.O.T.  
 STA 859+85.6  
 FD P.K./WASHER  
 8-8-00, BVD  
 SET P.K./WASHER  
 6-7-01, SAH  
 FD P.K./WASHER  
 REF89  
 5-5-16, DCH  
 7-27-17, JLL  
 SET MAG/WASHER  
 1-15-19, JLL



O.D.O.T. DISTRICT 2 SURVEY OFFICE

PERSONNEL

REFERENCE NO. 89

SHEET 48 OF 63

NOTES CORDS

H.C. VAN DUSEN

DATE 8-8-00

ROUTE 163

R.C. KATZGER

WEATHER SUN

COUNTY OTTAWA

TEMP. 80°

TOWNSHIP SALEM

SECTION 21

T6 N R 15 E

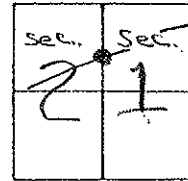
TYPE MONUMENT FD PK & WASHER

ON SURFACE - ~~NO~~ YES

LEFT-0 PAV'T. - ~~5~~ 5'

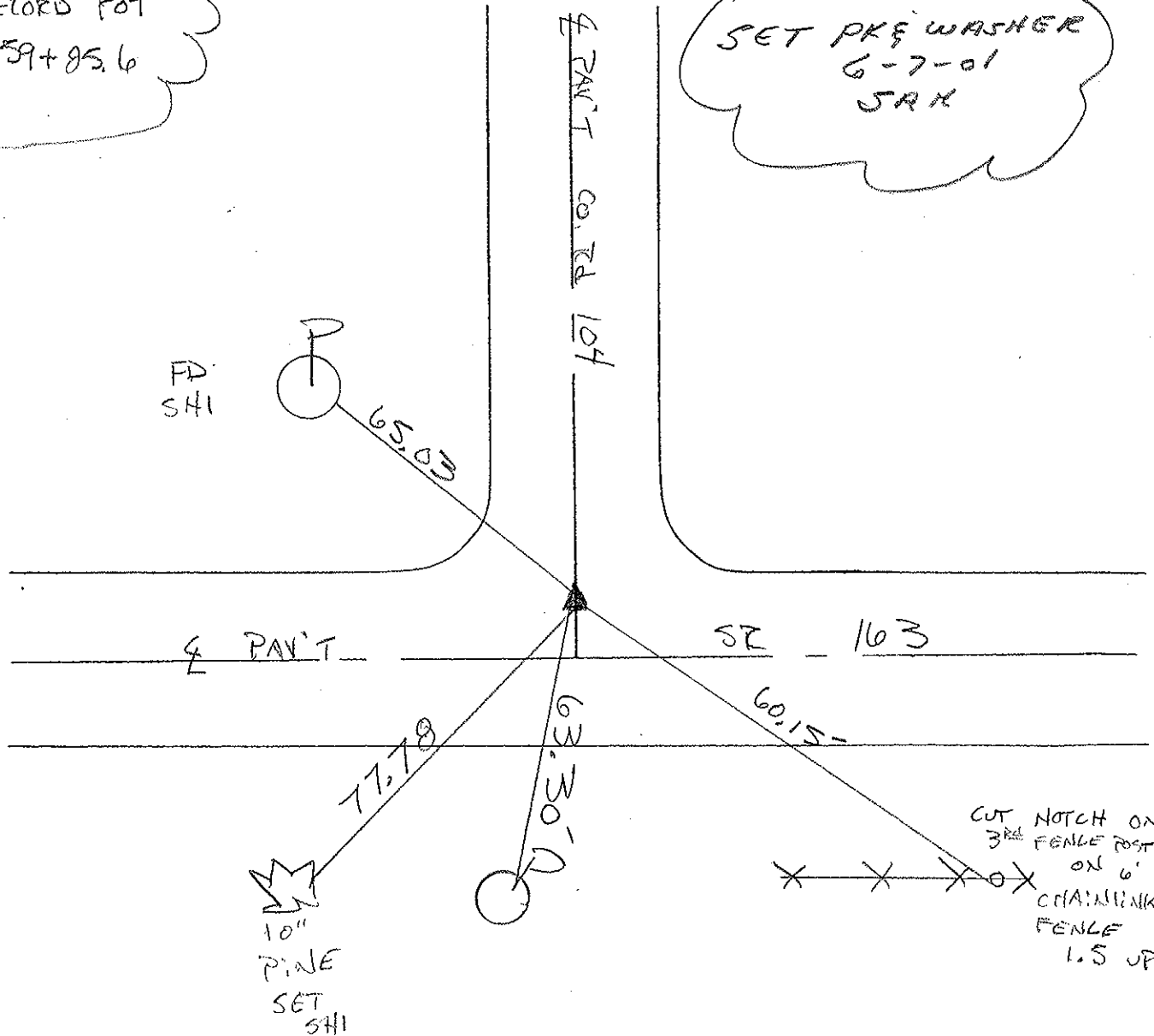
6 TO LT EDGE PAVEMENT

S.L.M. 915 + 67



RECORD POT  
859+85.6

SET PK & WASHER  
6-7-01  
JRH



O.D.O.T. DISTRICT 2 SURVEY OFFICE

PERSONNEL

REFERENCE NO. 89

SHEET 40 OF     

NOTES CRONIN

H.C. RIPPLE

R.C. BARBOUR

GEYMAN

DATE 9/27/90

WEATHER SUNNY

TEMP. 80°

ROUTE # 163

COUNTY OTTAWA

TOWNSHIP SALEM

SECTION 2 & 1

T 6 N R 15 E

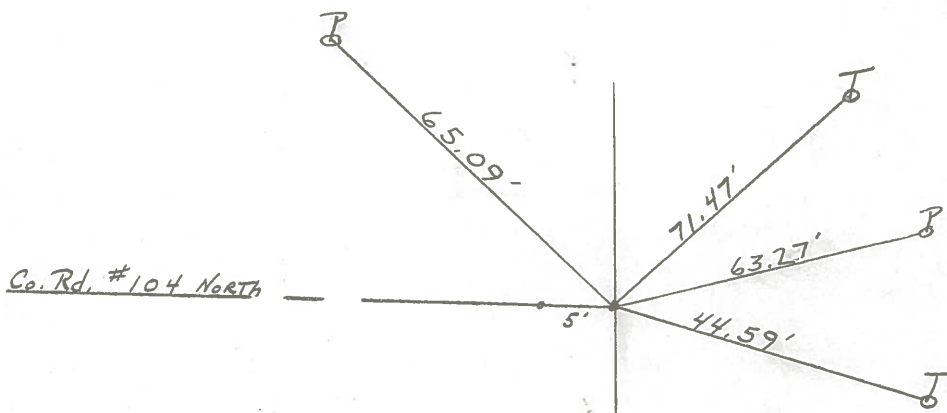
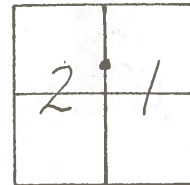
TYPE MONUMENT SET P.K. Nail & Washer

ON SURFACE - BELOW P.K. Nail

LEFT - & PAV'T. - RIGHT 5' LT. & PAV'T.

     TO      EDGE PAVEMENT

S.L.M. STA. 859+85.6



P.O.T. 859+85.6  
Co. has P.K. Nail 5' LT.  
of & Survey

PERSONNEL TITLE PERSONNEL TITLE

COUNTY Ottawa DATE March 1972

S. R. 16.3 WEATHER

SEC. Oak Harbor-East TEMP.

DESCRIPTION sec 2 salem Twp. JOB NO.

LEFT CENTER LINE RIGHT

