

O.D.O.T. DISTRICT 2 SURVEY OFFICE (USE ONLY)

PERSONNEL

REFERENCE NO. 90

SHEET 60 OF 74

NOTES CORDES

DATE 8-8-00

ROUTE SR 163

H.C. VANDUSEN

WEATHER FAIR

COUNTY OTTAWA

R.C. KARGER
HUSS

TEMP. 88°

TOWNSHIP SALEM

DWG BY JAMES

PID 95757

SECTION 1

T 6 N R 15 E

TYPE MONUMENT DNF

ON SURFACE - BELOW -

OFFSET \odot PAVEMENT 3' LT : ~~RT~~

- TO - EDGE PAVEMENT

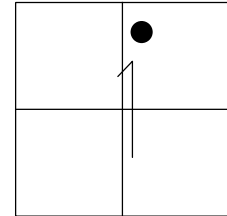
STATION: 951+67

HORIZ.DATUM: _____

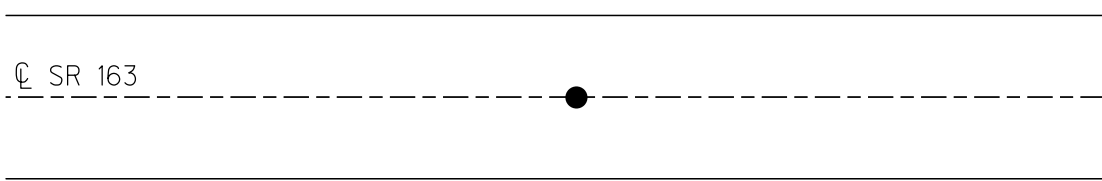
GEOID: _____

GRID: NORTHING: _____

EASTING: _____



RECORD: P.I.
 $\Delta = 21^{\circ}53'$ RT
STA 895+85.5
DNF
8-8-00, SAH
1-15-19, JLL



O.D.O.T. DISTRICT 2 SURVEY OFFICE

PERSONNEL _____

REFERENCE NO. 90

SHEET 49 OF 63

NOTES Cordes

H.C. VanNucen

R.C. Kauser

DATE 8-8-00

WEATHER Fair

TEMP. +88°F

ROUTE 163

COUNTY Ottawa

TOWNSHIP Salmon

SECTION 1

T 6 N R 15 E

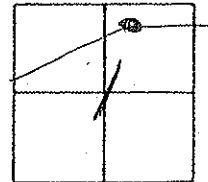
TYPE MONUMENT DNF

ON SURFACE - BELOW _____

~~LEFT - & PAV'T. - RIGHT~~ 3' Lt.

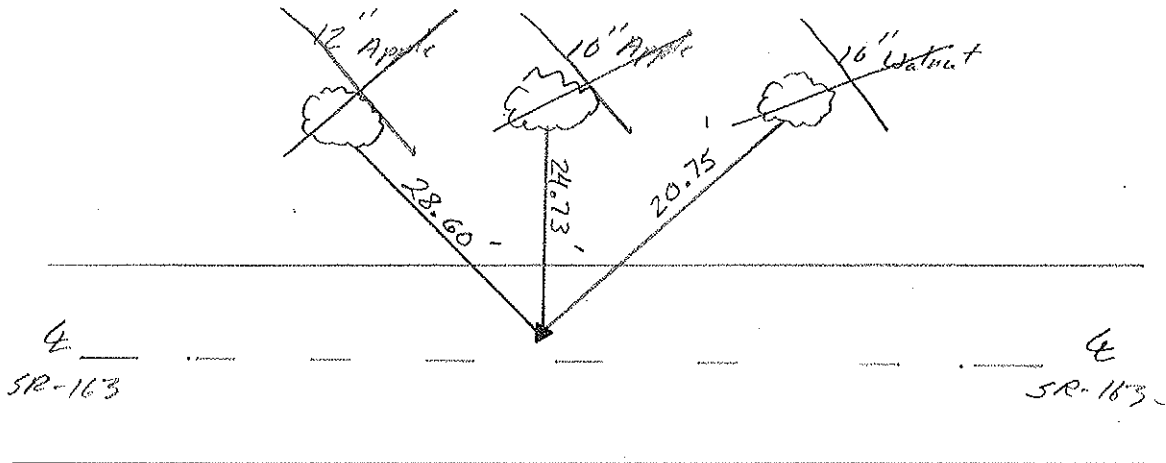
TO EDGE PAVEMENT

S.L.M. 951+67



Record : PI
895+85.5
 $\Delta = 21^\circ 53' \text{ Rt.}$

Ties gone -
will have to
relocate - SAH
8-8-00



Previous Records
indicate the point was
never found - will
have to reset when
needed

O.D.O.T. DISTRICT 2 SURVEY OFFICE

PERSONNEL

REFERENCE NO. 90

SHEET 41 OF

NOTES CRONIN

H.C. RIPPLE

R.C. BARBOUR

Geyman

DATE 9/27/90

WEATHER SUNNY

TEMP. 80°

ROUTE # 163

COUNTY OTTAWA

TOWNSHIP SALEM

SECTION 1

T. 6 N. R. 15 E.

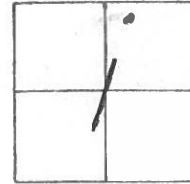
TYPE MONUMENT Did Not Find

ON SURFACE - BELOW ?

LEFT- & PAV'T. - RIGHT 3' LT. & CONST.

 TO EDGE PAVEMENT

S.L.M. STA. 895+85.5



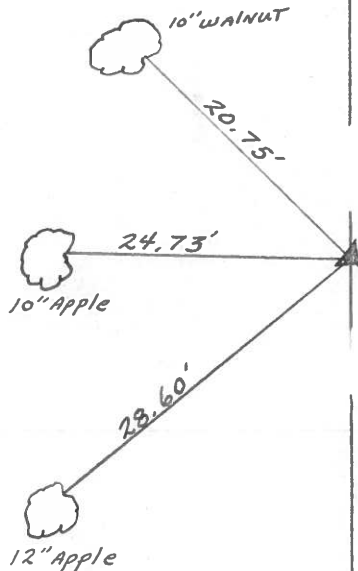
CONST.

← 3' →



P.I. 895+85.5

Δ = 21° 53' RT.



Did Not Find

PERSONNEL TITLE PERSONNEL TITLE

COUNTY Ottawa DATE March 1972

S. R. 16.3 WEATHER

SEC. Oak Harbor-East TEMP.

DESCRIPTION sec 2 salem Twp. JOB NO.

LEFT CENTER LINE RIGHT

