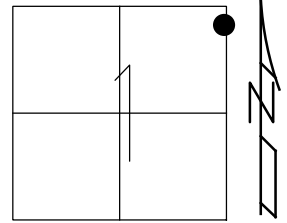


O.D.O.T. DISTRICT 2 SURVEY OFFICE (USE ONLY)

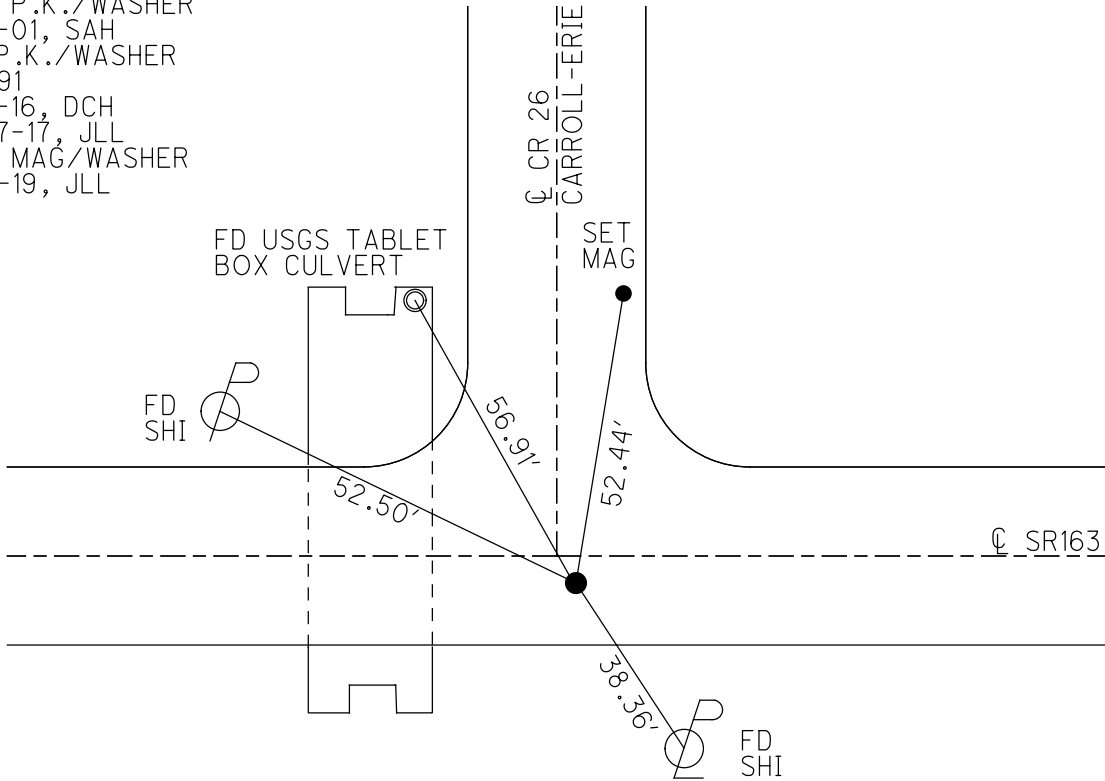
PERSONNEL _____ REFERENCE NO. 91 SHEET 61 OF 74
 NOTES HOMAN DATE 7-27-17 ROUTE SR 163
 H.C. LEU WEATHER CLOUDY COUNTY OTTAWA
 R.C. CARSON TEMP. 78° TOWNSHIP SALEM
 DWG BY JAMES PID 95757 SECTION 1
 T 6 N R 15 E

TYPE MONUMENT P.K./WASHER
 ON SURFACE - ~~BELOW~~ ON _____
 OFFSET CL PAVEMENT 3' ~~LT~~ : RT
5.5' TO RT EDGE PAVEMENT
 STATION: 971+95



HORIZ.DATUM: NAD83 2011 GEOID: NAVD88 2012A
 GRID: NORTHING: 673880.784 EASTING: 1812977.366

RECORD: P.I.
 Δ = 2° 51' LT
 STA 916+22.7
 FD P.K. SHANK
 8-8-00, BVD
 SET P.K./WASHER
 6-7-01, SAH
 FD P.K./WASHER
 REF91
 5-5-16, DCH
 7-27-17, JLL
 SET MAG/WASHER
 1-15-19, JLL



O.D.O.T. DISTRICT 2 SURVEY OFFICE

PERSONNEL

REFERENCE NO. 91

SHEET 50 OF 63

NOTES CORDS

H.C. VAN DUSEN

DATE 8-8-00

ROUTE 163

R.C. KARGER

WEATHER SUN

COUNTY OTTAWA

BROWN F

TEMP. 85°

TOWNSHIP SALEM

SECTION 1

T 6 N R 15 E

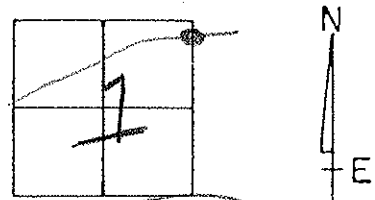
TYPE MONUMENT FD PK SHANK

ON SURFACE - ~~NO~~ YES

~~PAV'T~~ - PAV'T. - RIGHT 3'

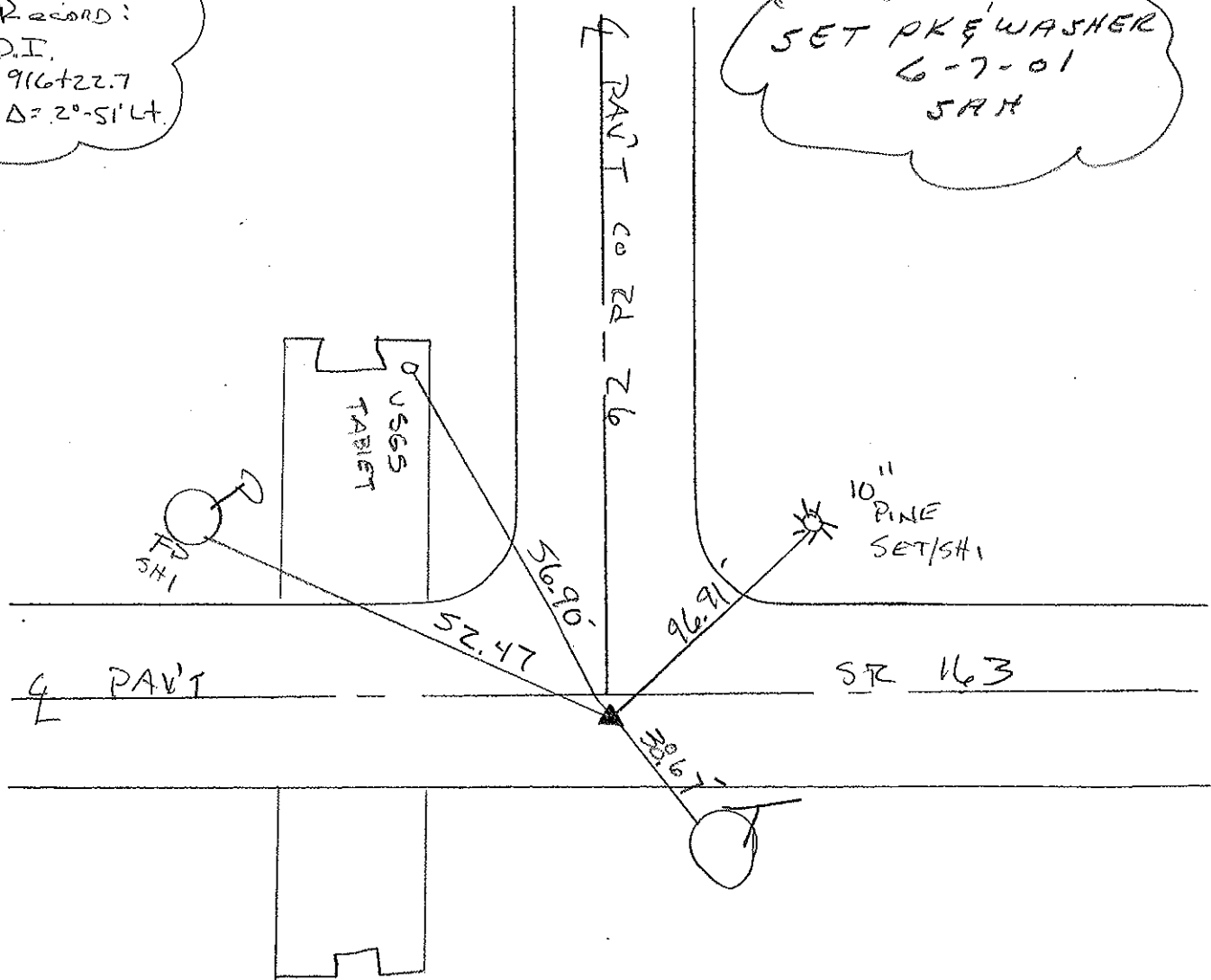
5.50 FT EDGE PAVEMENT

S.L.M. 971 + 95



Record:
P.I.
916+22.7
Δ = 2°-51' Lt.

SET PK & WASHER
6-7-01
JAM



O.D.O.T. DISTRICT 2 SURVEY OFFICE

PERSONNEL

REFERENCE NO. 91

SHEET 42 OF

NOTES RIPPLE

H.C. BARBOUR

R.C. GEYMAN

DATE 9/27/90 ^{DRAWN} 12/7/90

WEATHER SUNNY

TEMP. 80°

ROUTE # 163

COUNTY OTTAWA

TOWNSHIP SALEM

SECTION 2

T. 6 N R. 15 E

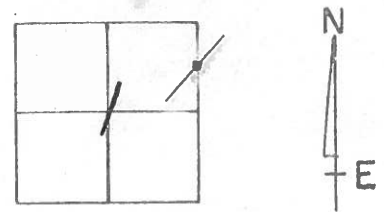
TYPE MONUMENT SET P.K. NAIL & WASHER

ON SURFACE - BELOW P.K. NAIL

LEFT - ☉ PAV'T. - RIGHT 3' RT. & PAV'T.

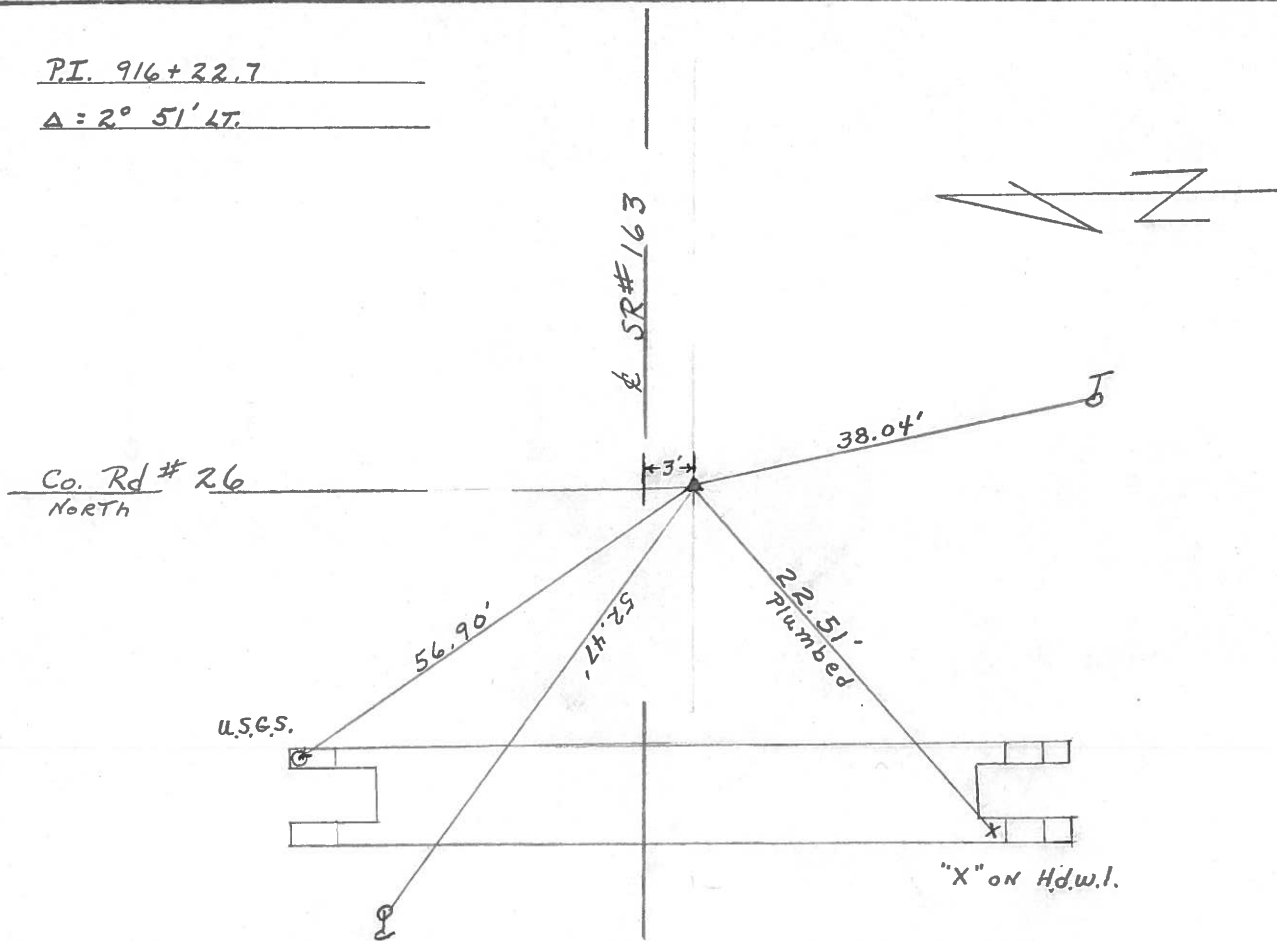
 TO EDGE PAVEMENT

S.L.M. STA. 916+22.7



P.I. 916+22.7

Δ = 2° 51' LT.



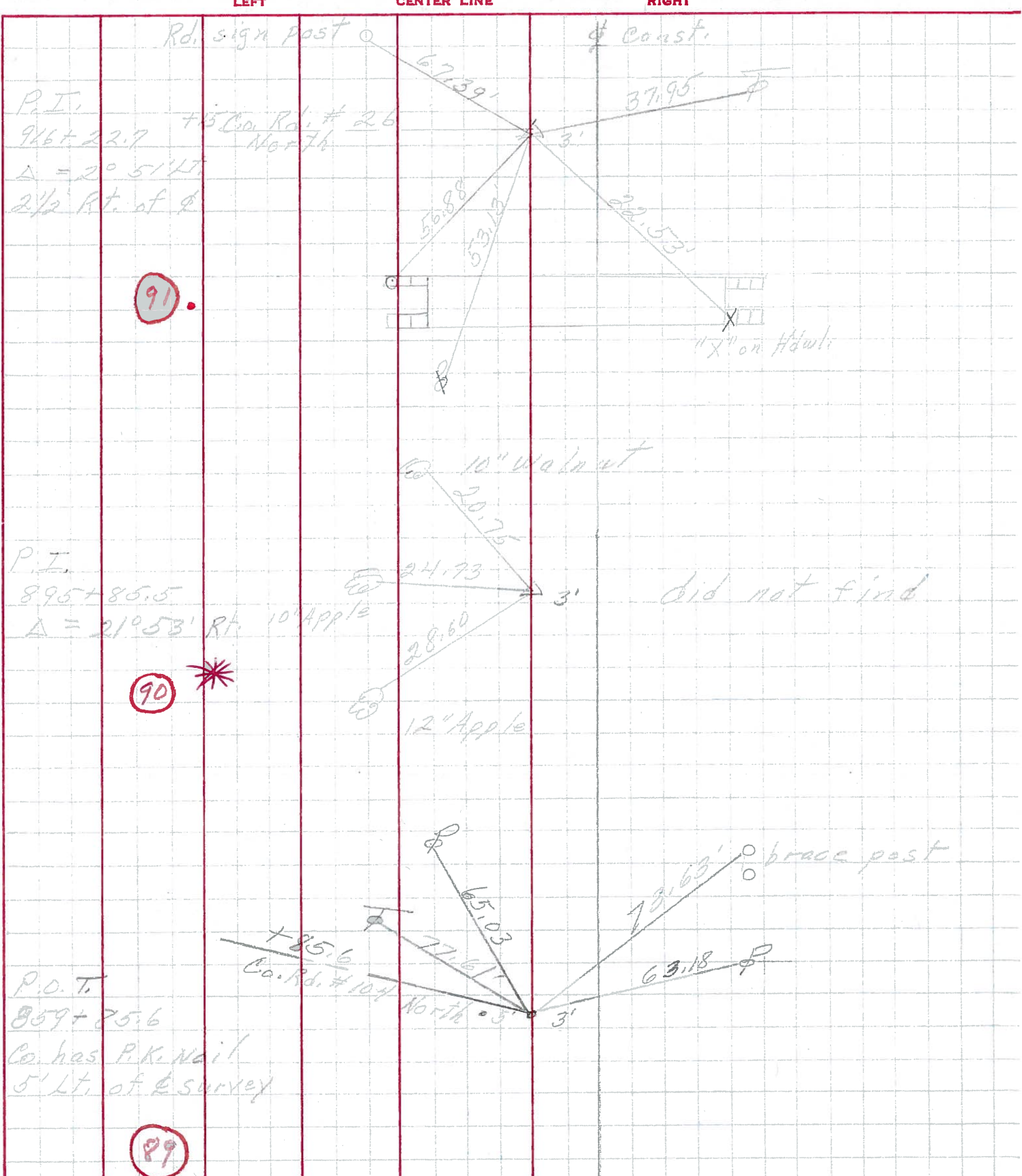
PERSONNEL TITLE PERSONNEL TITLE

COUNTY Ottawa DATE March 1972

S. R. 16.3 WEATHER

SEC. Oak Harbor-East TEMP.

DESCRIPTION sec 2 salem Twp. JOB NO.



PERSONNEL	TITLE	PERSONNEL	TITLE	COUNTY	DATE
<u>Schneider</u>		<u>Potts</u>		<u>Ottawa</u>	<u>9-3-68</u>
<u>Mosser</u>				S. R. <u>163</u>	WEATHER <u>Cloudy</u>
<u>Barbour</u>				SEC. <u>Oak Harbor-East</u>	TEMP. <u>70°</u>
<u>Redding</u>					
DESCRIPTION	<u>Ties for Control Points</u>			JOB NO.	
	LEFT	CENTER LINE	RIGHT		

