

O.D.O.T. DISTRICT 2 SURVEY OFFICE (USE ONLY)

PERSONNEL

REFERENCE NO. 92

SHEET 62 OF 74

NOTES HOMAN

DATE 7-27-17

ROUTE SR 163

H.C. LEU

WEATHER CLOUDY

COUNTY OTTAWA

R.C. CARSON

TEMP. 78°

TOWNSHIP ERIE

SECTION 6

DWG BY JAMES

PID 95757

T 6 N R 16 E

TYPE MONUMENT P.K./WASHER

ON SURFACE - ~~BELOW~~ ON

OFFSET  $\bar{C}$  PAVEMENT 5.7' LT : ~~RT~~

4.8' TO LT EDGE PAVEMENT

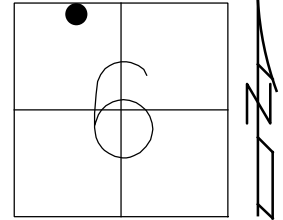
STATION: 1006+51

HORZ.DATUM: NAD83 2011

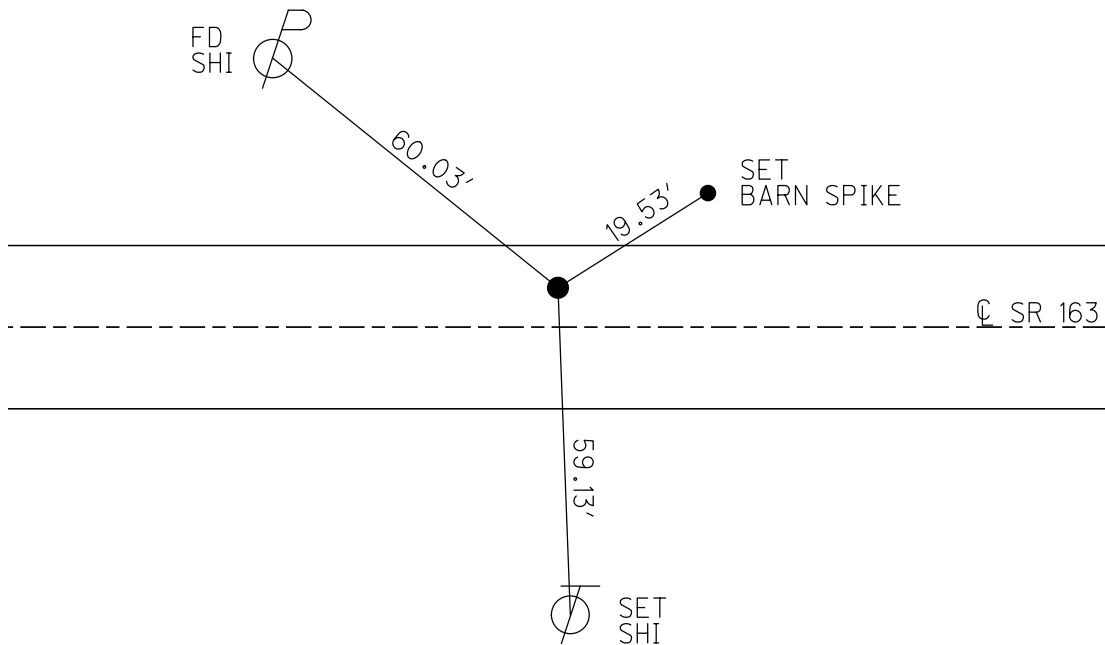
GEOID: NAVD88 2012A

GRID: NORTHING: 674213.496

EASTING: 1816410.325



RECORD: P.I.  
 $\Delta = 3^\circ 58' RT$   
 STA 950+54.96  
 FD P.K./WASHER  
 10-11-00, SAH  
 SET P.K./WASHER  
 11-27-00, SAH  
 FD P.K./WASHER  
 REF92  
 5-5-16, DCH  
 7-27-17, JLL  
 SET MAG/WASHER  
 1-15-19, JLL



O.D.O.T. DISTRICT 2 SURVEY OFFICE

PERSONNEL

REFERENCE NO. 92

SHEET 51 OF 63

NOTES CORDS

H.C. CORDS

R.C. KARGER

HUSS

DATE 10-11-00

WEATHER SUNNY

TEMP. 77°

ROUTE SR 163

COUNTY OTTAWA

TOWNSHIP ERIE

SECTION 6

T6N R16E

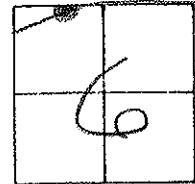
TYPE MONUMENT FD PK + WASHER

ON SURFACE - ~~NO~~ YES

LEFT- & PAV'T. - ~~NO~~ 5.7

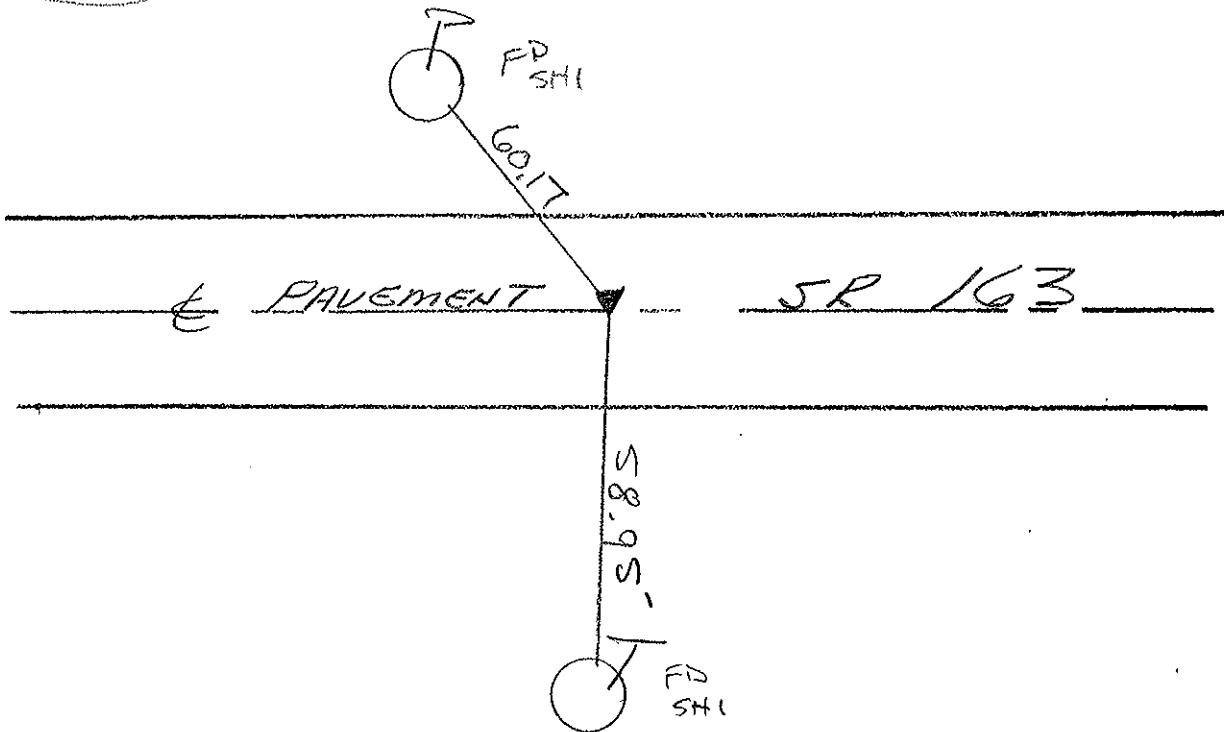
4.8 TOLT EDGE PAVEMENT

S.L.M. 1006 + 51



PI STA 950+54.96  
 $\Delta$  3°-58' RT RECORD

SET PK  
 + WASHER  
11-27-00  
 SAH



O.D.O.T. DISTRICT 2 SURVEY OFFICE

PERSONNEL

REFERENCE NO. 92

SHEET 43 OF     

NOTES RIPPLE

H.C. BARBOUR

R.C. GEYMAN

DATE 9/27/90 <sup>DRAWN</sup> 12/07/90

WEATHER SUNNY

TEMP. 80°

ROUTE SR#163

COUNTY OTTAWA

TOWNSHIP ERIC

SECTION 6

T.6 N R.16 E

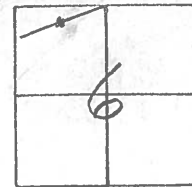
TYPE MONUMENT SET PK. NAIL & WASHER

ON SURFACE - BELOW PK. NAIL

LEFT - & PAV'T. - RIGHT 5.1' LT. & PAV'T.

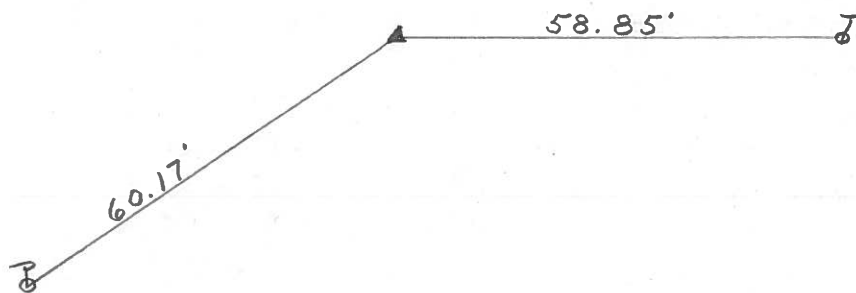
     TO      EDGE PAVEMENT

S.L.M. STA. 950+54.96



P.I. STA. 950+54.96

$\Delta = 3^{\circ} 58' \text{ RT.}$



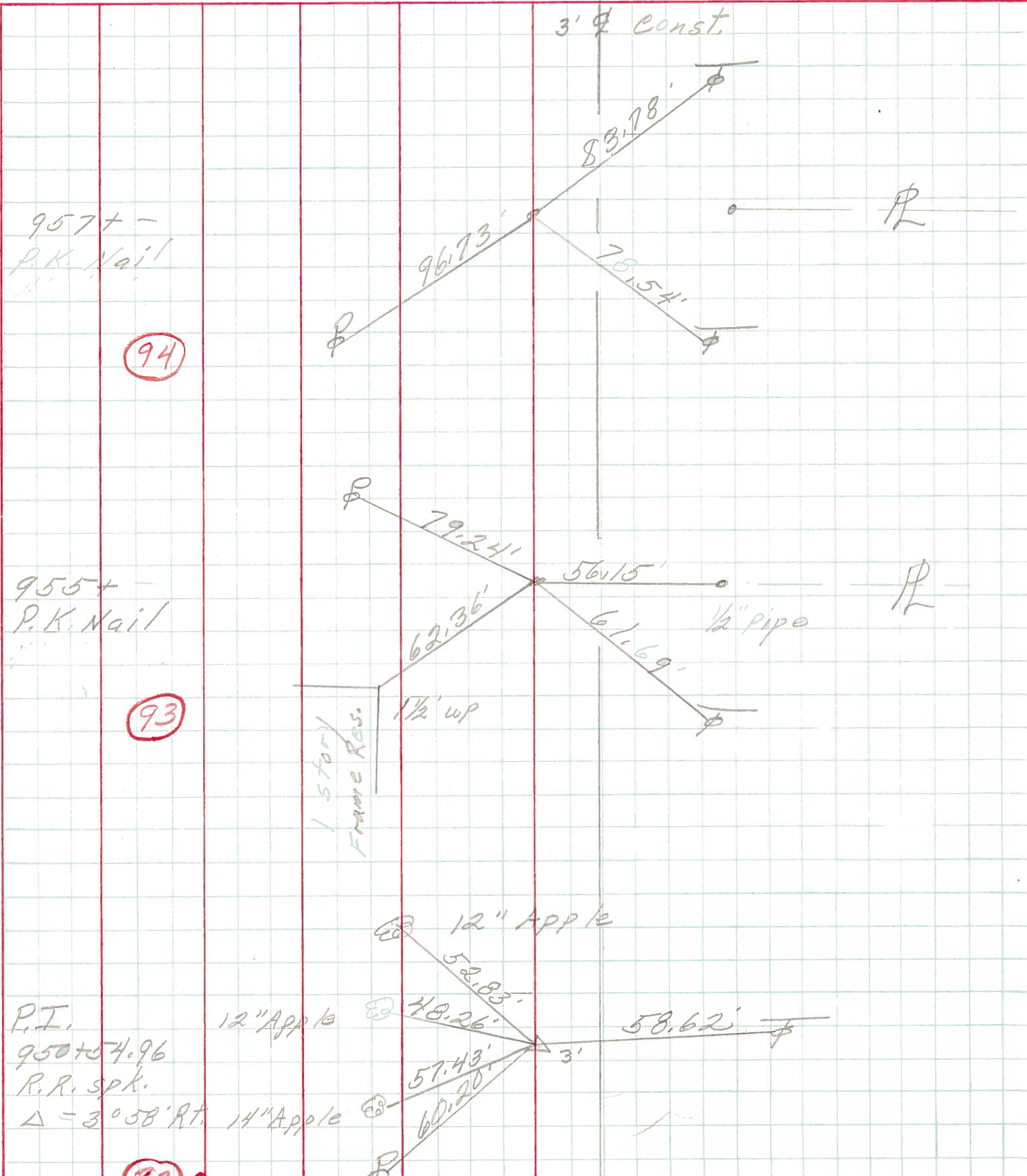
PERSONNEL TITLE PERSONNEL TITLE

COUNTY Ottawa DATE March 1972

S. R. 163 WEATHER

SEC. Oak Harbor East TEMP.

DESCRIPTION Sec 6 Erie Twp. JOB NO.



| PERSONNEL | TITLE | PERSONNEL | TITLE | COUNTY               | DATE           |
|-----------|-------|-----------|-------|----------------------|----------------|
| Schneider |       | Potts     |       | Ottawa               | 9-3-68         |
| Mosser    |       |           |       | S. R. 163            | WEATHER Cloudy |
| Barbour   |       |           |       | SEC. Oak Harbor-East | TEMP. 70°      |
| Reddino   |       |           |       |                      |                |

DESCRIPTION Ties for Control Points JOB NO. \_\_\_\_\_

