

O.D.O.T. DISTRICT 2 SURVEY OFFICE (USE ONLY)

PERSONNEL

REFERENCE NO. 93

SHEET 63 OF 74

NOTES HOMAN

DATE 7-27-17

ROUTE SR163

H.C. LEU

WEATHER SUNNY

COUNTY OTTAWA

R.C. CARSON

TEMP. 81°

TOWNSHIP ERIE

SECTION 6

DWG BY JAMES PID 95757

T 6 N R 16 E

TYPE MONUMENT P.K./WASHER

~~ON SURFACE~~ - BELOW 4"

OFFSET \odot PAVEMENT 4.0' LT : ~~RT~~

7.0' TO LT EDGE PAVEMENT

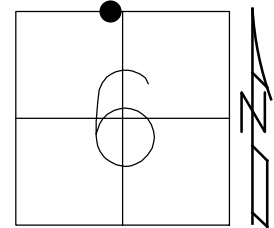
STATION: 1011+75

HORZ.DATUM: NAD83 2011

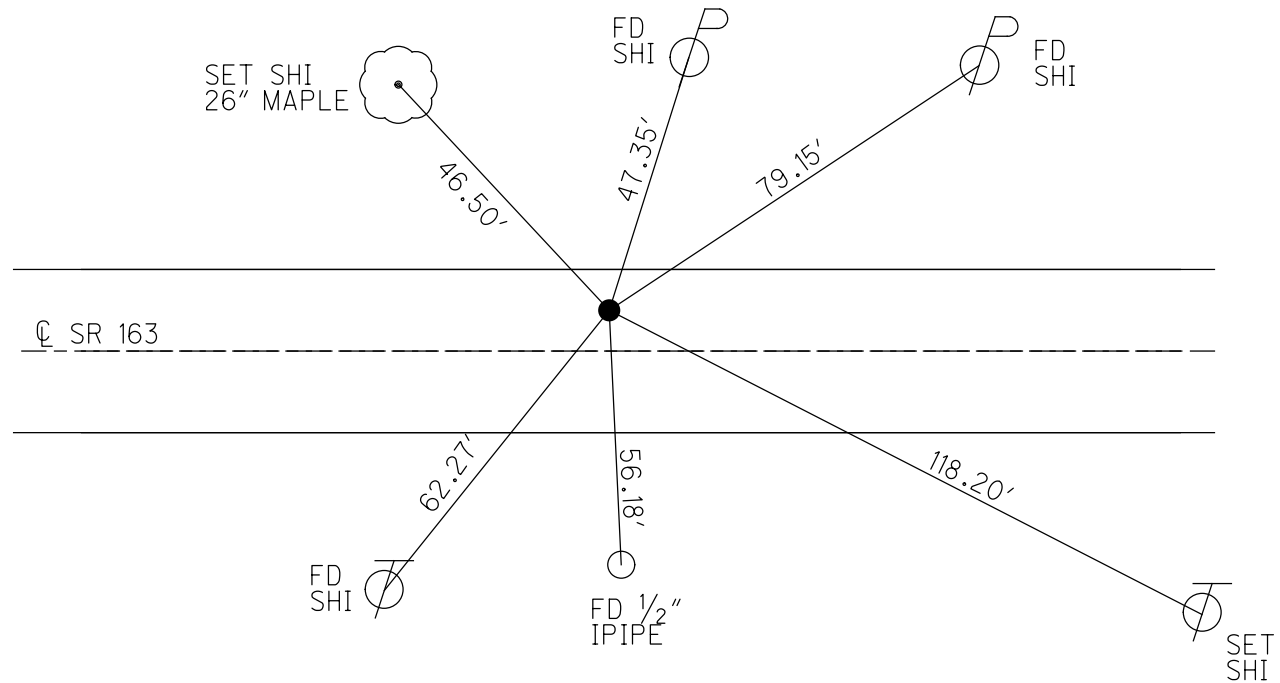
GEOID: NAVD88 2012A

GRID: NORTHING: 674206.487

EASTING: 1816931.986



RECORD:
 FD P.K./WASHER
 8-9-00, SAH
 REF93
 7-27-17, JLL
 SET MAG/WASHER
 1-15-19, JLL



O.D.O.T. DISTRICT 2 SURVEY OFFICE

PERSONNEL

REFERENCE NO. 93

SHEET 52 OF 63

NOTES HUSS

H.C. COOPER DA

DATE 8-9-00

ROUTE 163

R.C. KAZGER

WEATHER SUN

COUNTY OTTAWA

TEMP. 77°

TOWNSHIP ERIE

SECTION 6

T6 N R 16 E

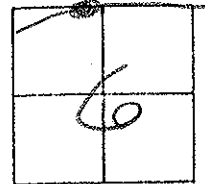
TYPE MONUMENT FD PK & NASHER

ON SURFACE ~~BELOW~~ YES

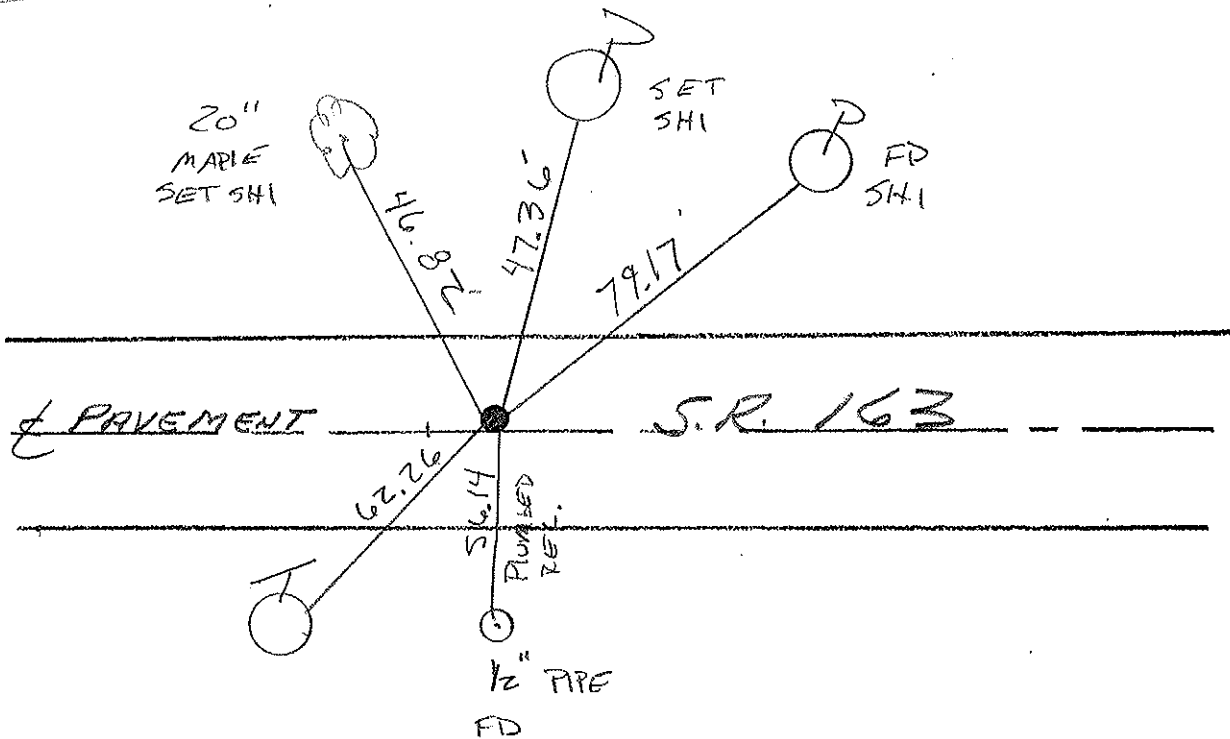
LEFT-☉ PAV'T. ~~RIGHT~~ 4°

7.0' TOLT EDGE PAVEMENT

S.L.M. 1011+75



Revised:
955+



O.D.O.T. DISTRICT 2 SURVEY OFFICE

PERSONNEL

REFERENCE NO. 93

SHEET 44 OF

NOTES Ripple

H.C. BARBOUR

R.C. GEYMAN

DATE 9/28/90 ^{DRAWN} 12/27/90

WEATHER Sunny

TEMP. 65°

ROUTE SR#163

COUNTY OTTAWA

TOWNSHIP ERIE

SECTION 6

T 6 N R 16 E

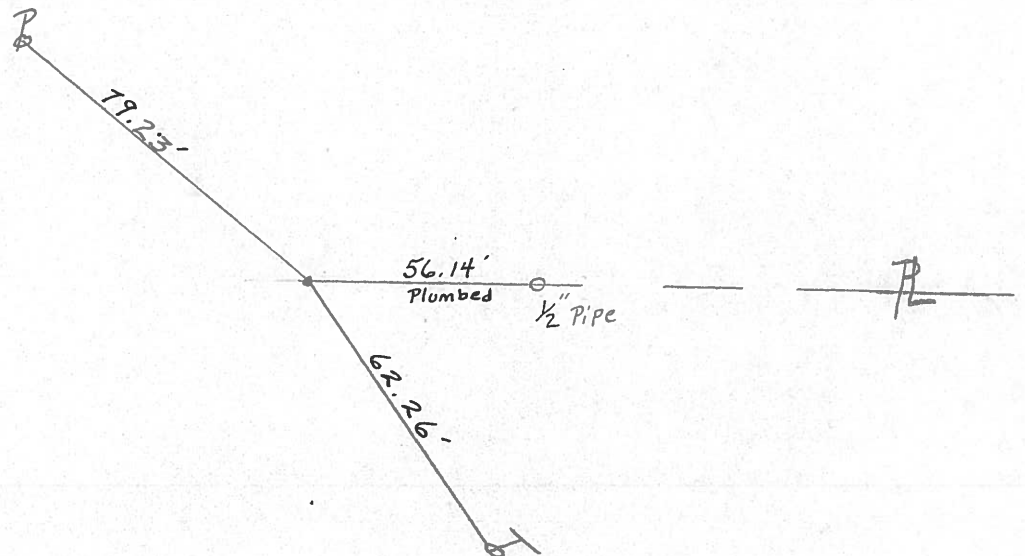
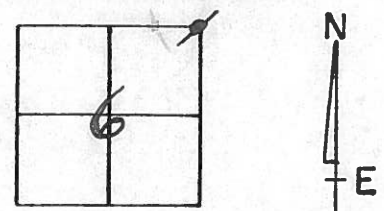
TYPE MONUMENT SET PK. Nail & Washer

ON SURFACE - BELOW PK. Nail

LEFT - ¢ PAV'T. - RIGHT 4' LT. & PAVM'T.

 TO EDGE PAVEMENT

S.L.M. 955+



PERSONNEL TITLE PERSONNEL TITLE

COUNTY Ottawa DATE March 1972

S. R. 163 WEATHER

SEC. Oak Harbor East TEMP.

DESCRIPTION Sec 6 Erie Twp. JOB NO.

LEFT CENTER LINE RIGHT



PERSONNEL TITLE PERSONNEL TITLE COUNTY 0 a DATE 9-3-68
Schneider _____ Potts _____
Mosser _____ S. R. 163 WEATHER Fair
Barbour _____ SEC. Oak Harbor-East TEMP. 72°
Redding _____
 DESCRIPTION Ties for Control Points 12" catalog _____ JOB NO. _____
 LEFT CENTER LINE RIGHT

