

O.D.O.T. DISTRICT 2 SURVEY OFFICE (USE ONLY)

PERSONNEL

REFERENCE NO. 94

SHEET 64 OF 74

NOTES HOMAN

DATE 7-23-17

ROUTE SR 163

H.C. LEU

WEATHER CLOUDY

COUNTY OTTAWA

R.C. CARSON

TEMP. 78°

TOWNSHIP ERIE

SECTION 5

DWG BY JAMES

PID 95757

T 6 N R 16 E

TYPE MONUMENT P.K./WASHER

~~ON SURFACE~~ - BELOW 4"

OFFSET CL PAVEMENT 4.5' LT : ~~RT~~

6.0' TO LT EDGE PAVEMENT

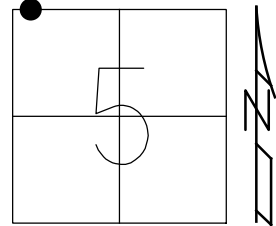
STATION: 1013+34

HORZ.DATUM: NAD83 2011

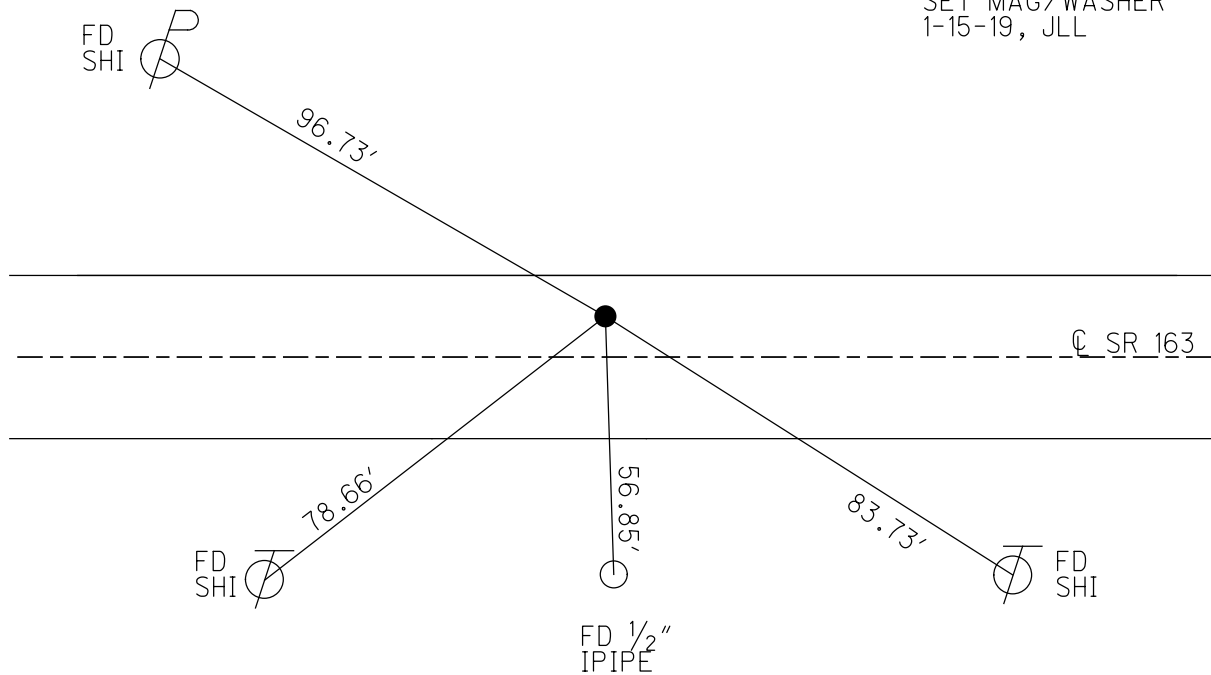
GEOID: NAVD88 2012A

GRID: NORTHING: 674204.620

EASTING: 1817092.097



RECORD:
 FD P.K./WASHER
 8-9-00, SAH
 SET P.K./WASHER
 6-7-01, SAH
 FD P.K./WASHER
 4" DOWN
 REF94
 7-23-17, JLL
 SET MAG/WASHER
 1-15-19, JLL



O.D.O.T. DISTRICT 2 SURVEY OFFICE

PERSONNEL _____

REFERENCE NO. 94

SHEET 53 OF 63

NOTES Huss

H.C. Cordas

R.C. Karger

DATE 8-9-00

WEATHER Clody-Fair

TEMP. +77°F

ROUTE SR-163

COUNTY OHawce

TOWNSHIP Erie

SECTION 5

T 6 N R 16 E

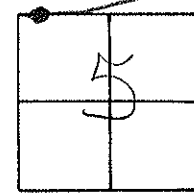
TYPE MONUMENT PK/w

~~ON SURFACE~~ - ~~BELOW~~ 0.4' Below

~~LEFT~~ - ~~RIGHT~~ 4.5' ht.

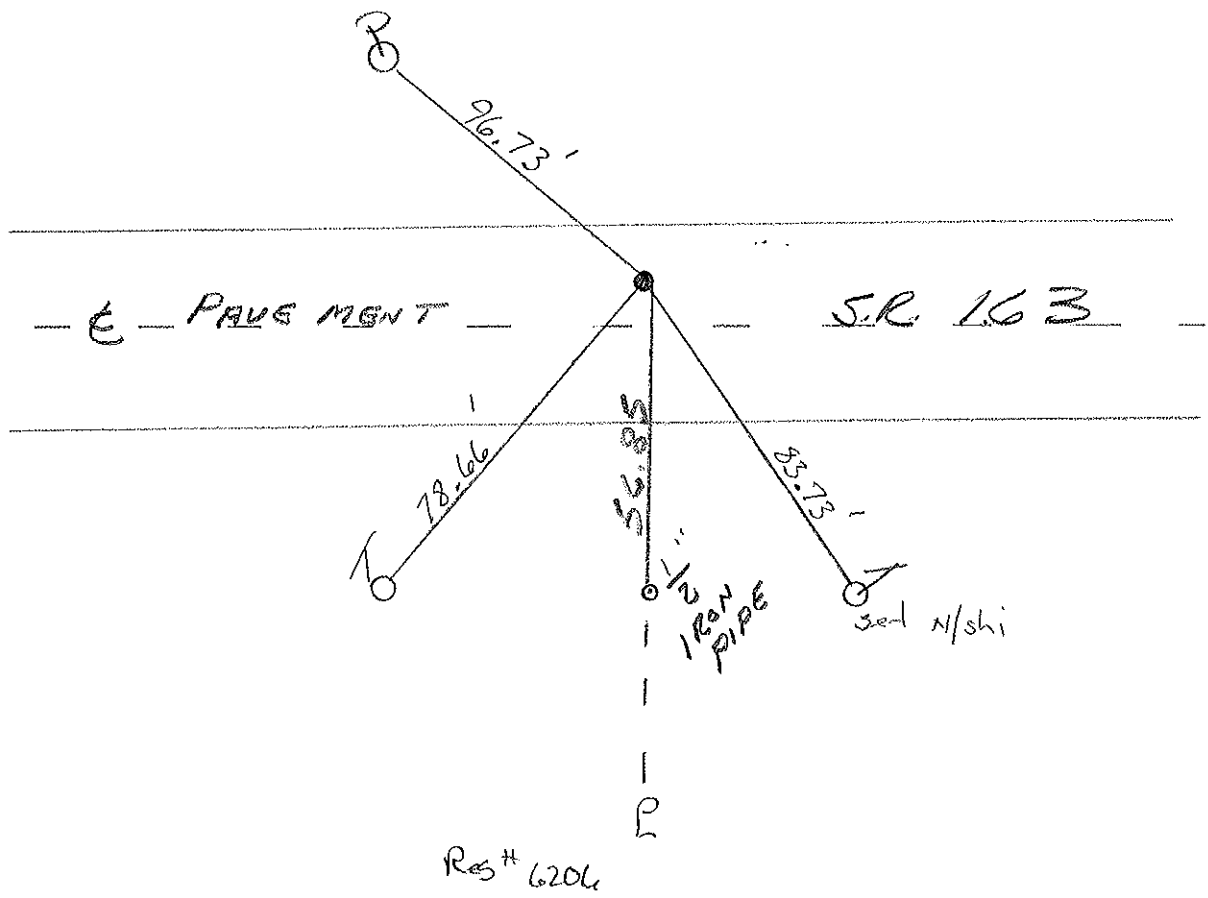
6.0 TO ht. EDGE PAVEMENT

S.L.M. 7013 +34



Record:
In front of res.
6206 E. Prop line
957+

SET PK & WASHER
6-7-01
SAH



Res # 6206

O.D.O.T. DISTRICT 2 SURVEY OFFICE

PERSONNEL

REFERENCE NO. 94

SHEET 45 OF

NOTES Ripple

H.C. BARBOUR

DATE 9/28/90 DRAWN 12/27/90

ROUTE SR. #163

R.C. GEYMAN

WEATHER SUNNY

COUNTY OTTAWA

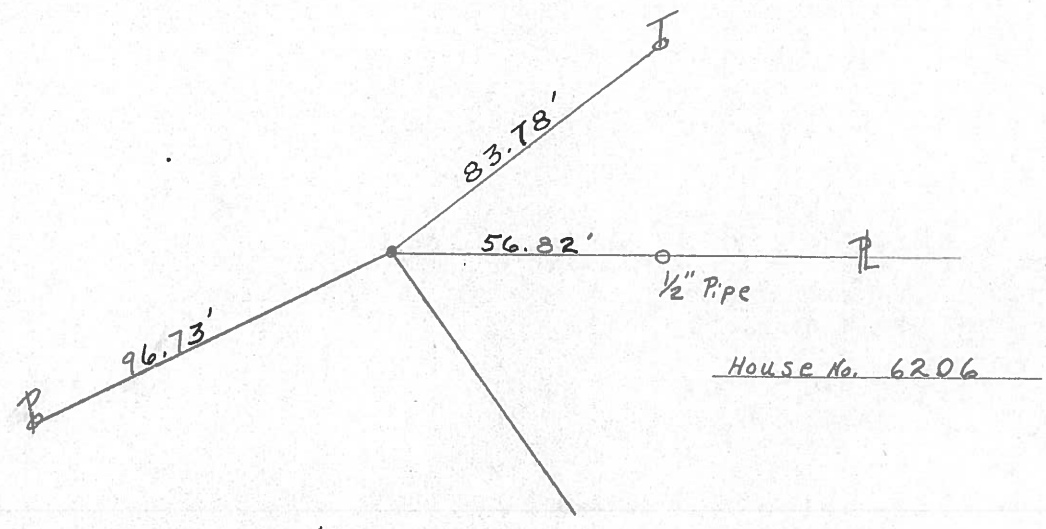
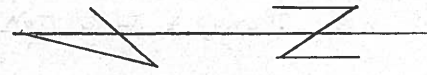
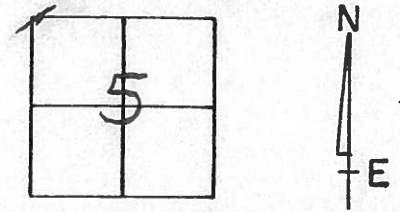
TEMP. 65°

TOWNSHIP ERIE

SECTION 6

T 6 N R 16 E

TYPE MONUMENT Dig when Needed
ON SURFACE - BELOW P.K. Nail A Top P.K. Nail
LEFT - & PAV'T. - RIGHT 4.9' LT. & PAV'T.
TO EDGE PAVEMENT
S.L.M. 957+ -



PERSONNEL TITLE PERSONNEL TITLE

COUNTY Ottawa DATE March 1972

S. R. 163 WEATHER

SEC. Oak Harbor East TEMP.

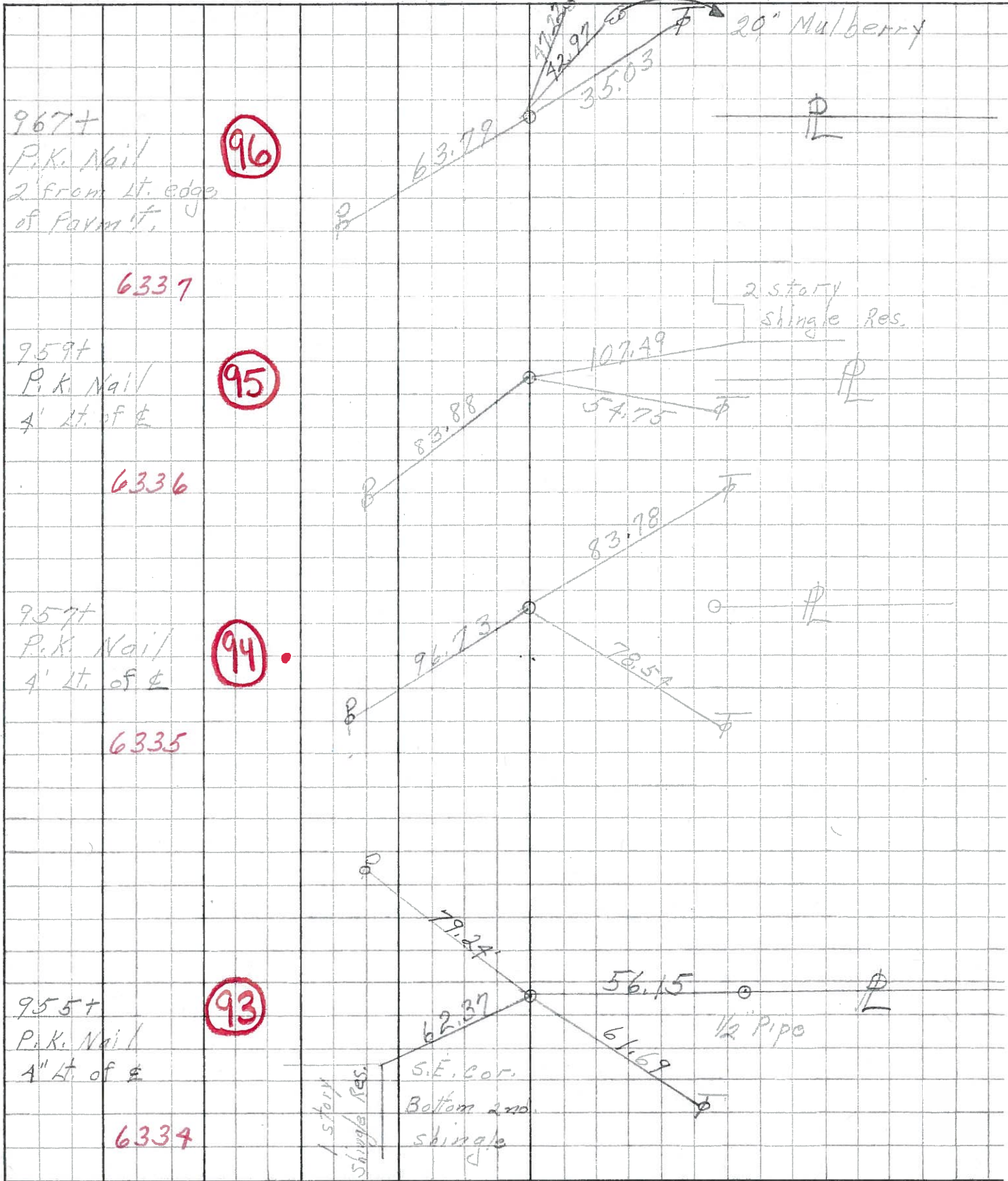
DESCRIPTION Sec 6 Erie Twp. JOB NO.

LEFT CENTER LINE RIGHT



PERSONNEL	TITLE	PERSONNEL	TITLE	COUNTY	DATE
Schneider		Potts		Ottawa	9-3-68
Mosser				S. R. 163	WEATHER Fair
Barbour				SEC. Oak Harbor-East	TEMP. 72°
Redding					

DESCRIPTION Ties for Control Points 12" cat. log RIGHT JOB NO. _____



967+
P.K. Nail
2' from lt. edge
of farm lt.

96

6337

959+
P.K. Nail
4' lt. of #

95

6336

957+
P.K. Nail
4' lt. of #

94

6335

955+
P.K. Nail
4" lt. of #

93

6334

1 story
Shingle Res.

S.E. cor.
Bottom and
shingle

1/2 Pipe

2 story
Shingle Res.

20" Mulberry