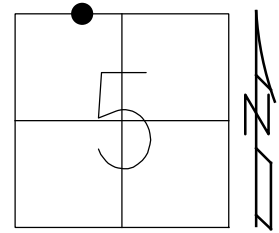


O.D.O.T. DISTRICT 2 SURVEY OFFICE (USE ONLY)

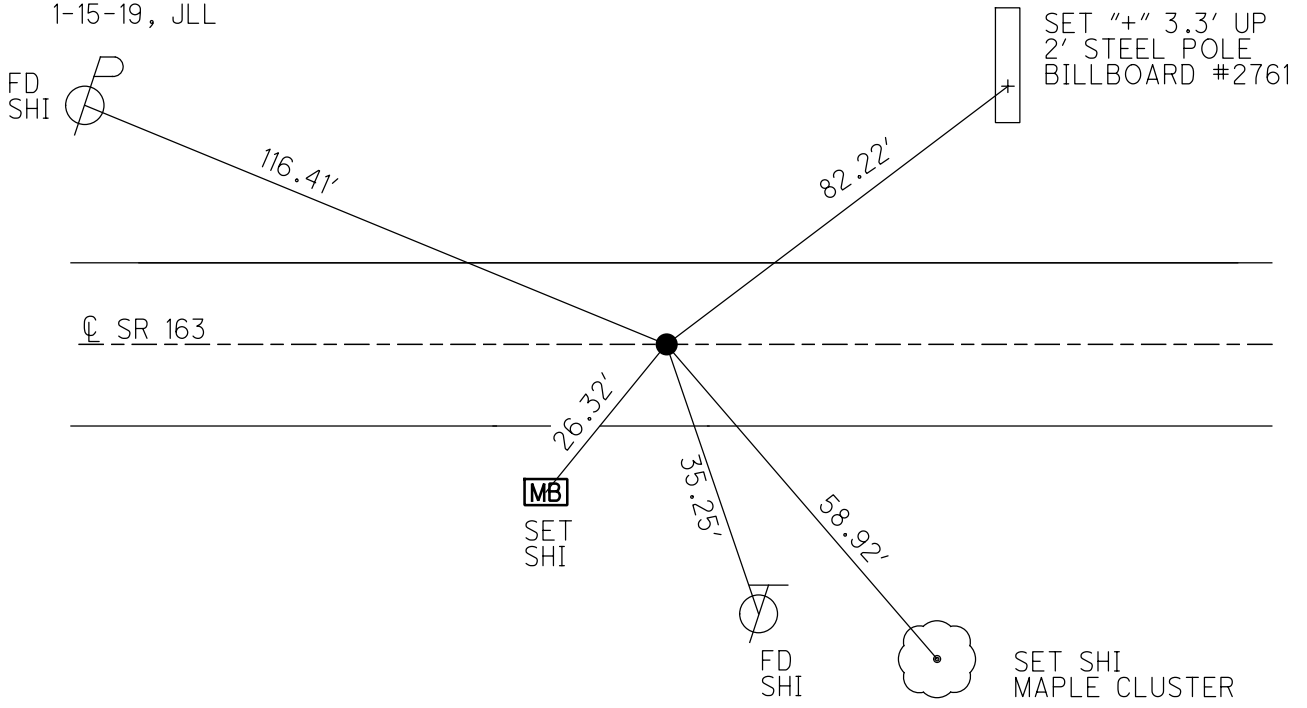
PERSONNEL _____ REFERENCE NO. 96 SHEET 66 OF 74
 NOTES POORE DATE 7-28-17 ROUTE SR 163
 H.C. LEU WEATHER CLOUDY, WINDY COUNTY OTTAWA
 R.C. CARSON TEMP. 72° TOWNSHIP ERIE
 DWG BY JAMES PID 95757 SECTION 5
 T 7 N R 16 E

TYPE MONUMENT P.K./WASHER
 ON SURFACE - ~~BELOW~~ ON
 OFFSET Q PAVEMENT 8.9' LT : ~~RT~~
2.3' TO LT EDGE PAVEMENT
 STATION: 1023+30



HORZ.DATUM: NAD83 2011 GEOID: NAVD88 2012A
 GRID: NORTHING: 674193.131 EASTING: 1818085.437

RECORD:
 FD P.K./WASHER
 8-9-00, SAH
 SET P.K./WASHER
 6-7-01, SAH
 FD P.K./WASHER
 4" DOWN
 REF96
 5-5-16, DCH
 7-28-17, JLL
 SET MAG/WASHER
 1-15-19, JLL



O.D.O.T. DISTRICT 2 SURVEY OFFICE

PERSONNEL

REFERENCE NO. 96

SHEET 55 OF 63

NOTES HUSS

H.C. CORDES IX

DATE 8-9-00

ROUTE 163

R.C. KATGER

WEATHER SUN

COUNTY OTTAWA

HUSS

TEMP. 77°

TOWNSHIP ERIE

SECTION 5

T 7 N R 16 E

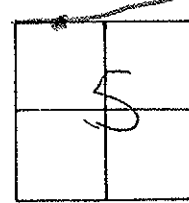
TYPE MONUMENT FD PK & WASHER

ON SURFACE - ~~NO~~ YES

LEFT-€ PAV'T. - ~~RIGHT~~ 8.9

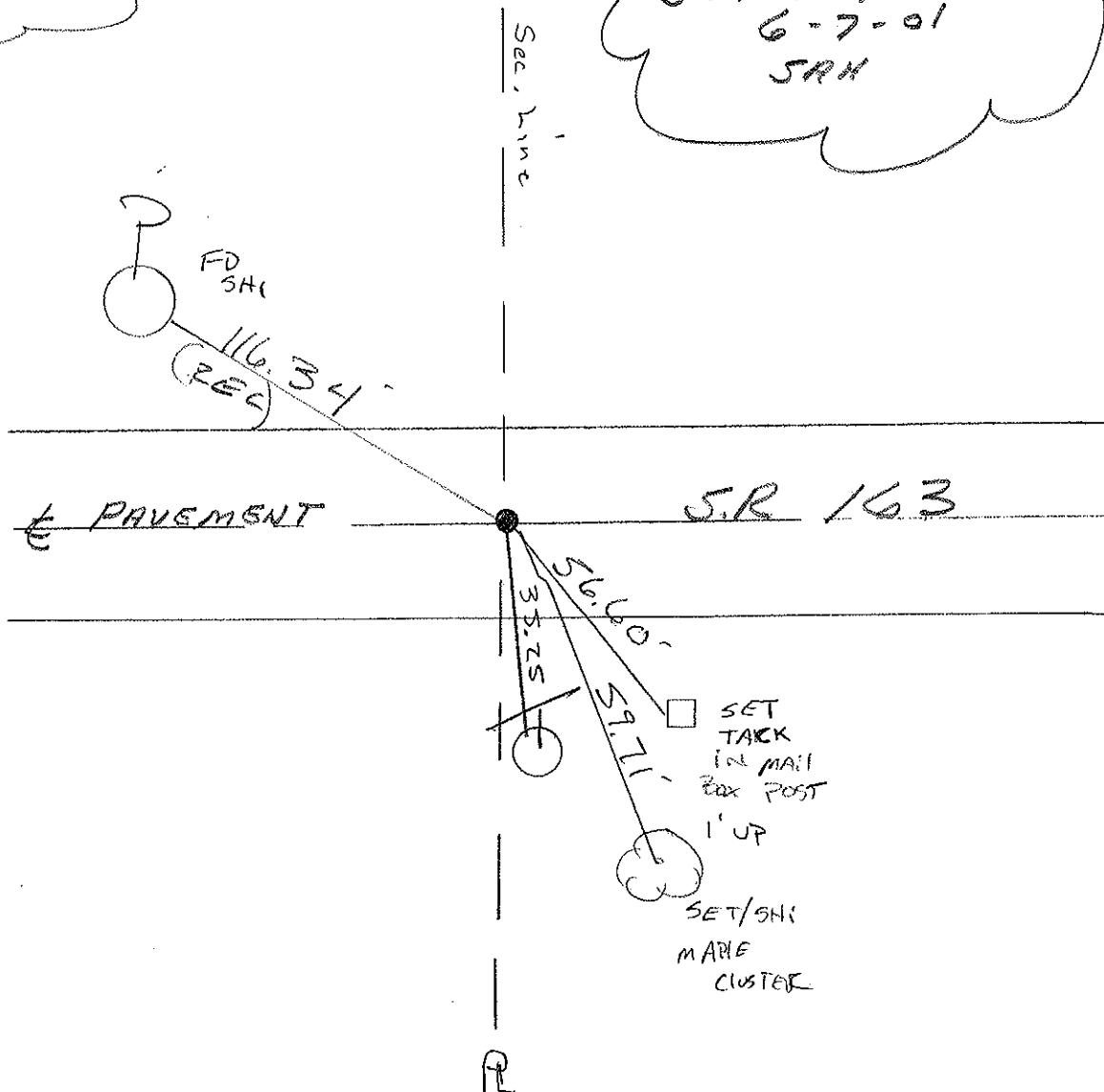
2.3 TO LT EDGE PAVEMENT

S.L.M. 1023+30



Records!
1019+80±

SET PK & WASHER
 6-7-01
 SHH



O.D.O.T. DISTRICT 2 SURVEY OFFICE

PERSONNEL

REFERENCE NO. 96

SHEET 47 OF _____

NOTES RIPPLE

H.C. BARBOUR

DATE 9/28/90 ^{DRAWN} 12/27/90

ROUTE SR#163

R.C. GEYMAN

WEATHER Cloudy

COUNTY OTTAWA

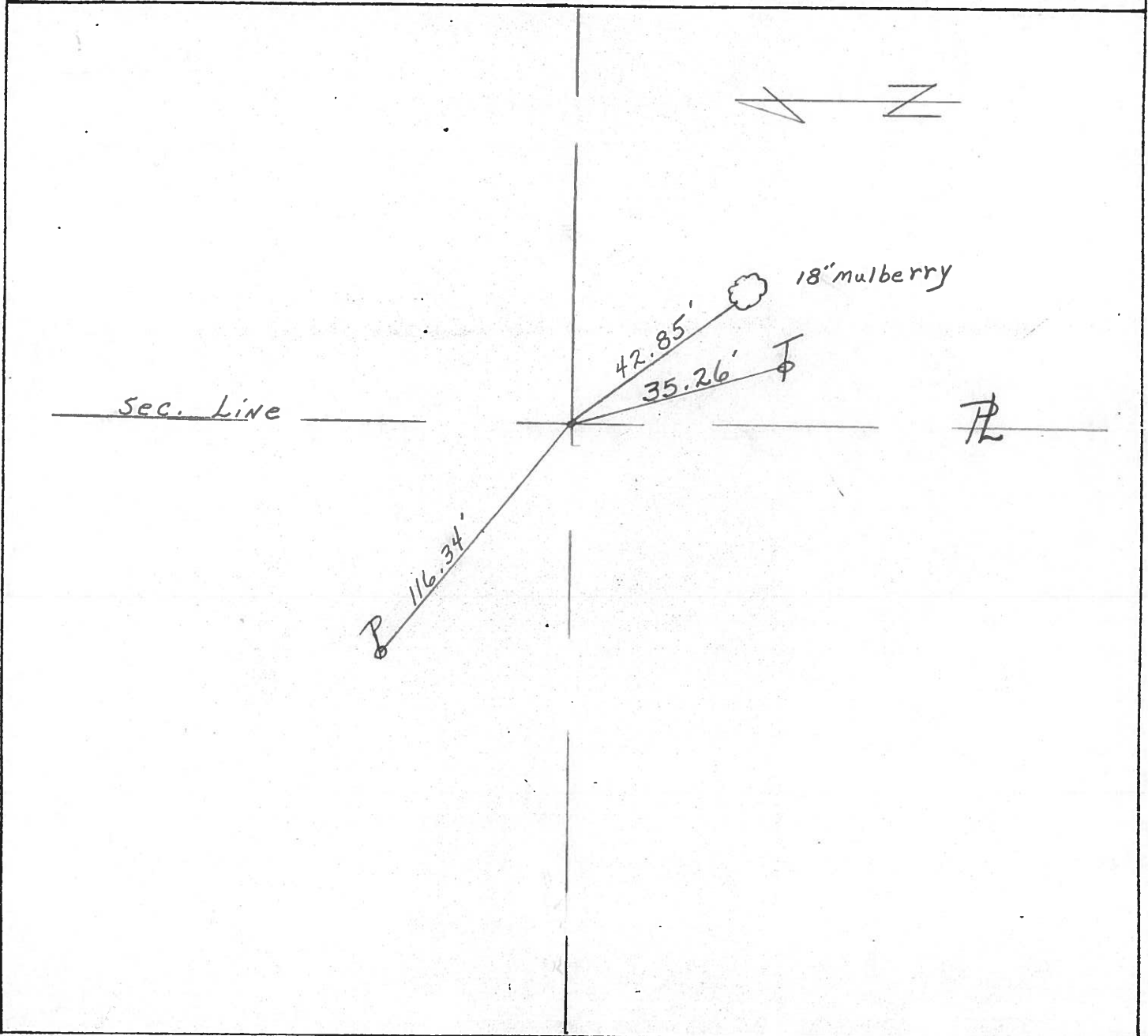
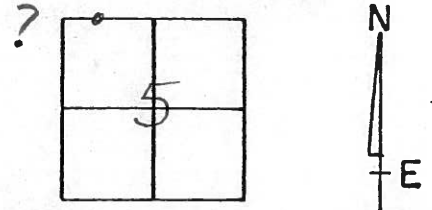
TEMP. 65°

TOWNSHIP ERIC

SECTION 5

T7 N R16 E

TYPE MONUMENT Set P.K. Nail & Washer
ON SURFACE - BELOW P.K. Nail & Washer
LEFT- & PAV'T. - RIGHT 3.9' LT. of & Pav't.
____ TO ____ EDGE PAVEMENT
S.L.M. 1019+82 ±



PERSONNEL TITLE PERSONNEL TITLE

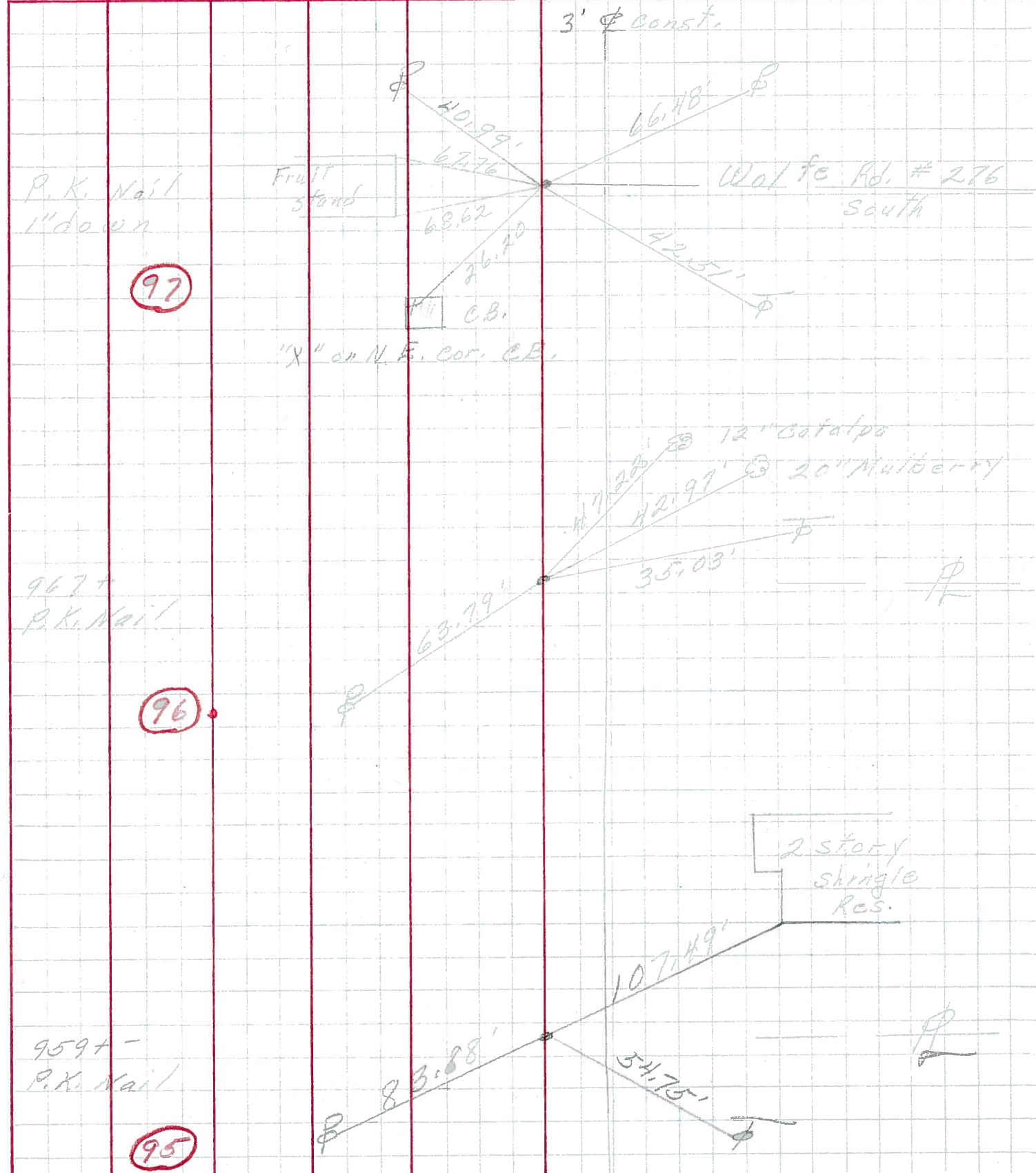
COUNTY Ottawa DATE March 1972

S. R. 163 WEATHER

SEC. Oak Harbor East TEMP.

DESCRIPTION SEC 5 Erie Twp. JOB NO.

LEFT CENTER LINE RIGHT



PERSONNEL	TITLE	PERSONNEL	TITLE	COUNTY	Ottawa	DATE	9-3-68
Schneider		Potts		S. R.	163	WEATHER	Fair
Masser				SEC.	Oak Harbor-East	TEMP.	72°
Barbour							
Redding							

DESCRIPTION Ties for Control Points 12" catalog RIGHT JOB NO.

