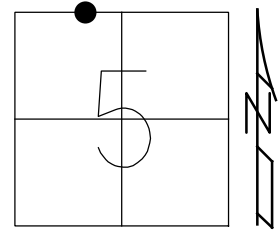


O.D.O.T. DISTRICT 2 SURVEY OFFICE (USE ONLY)

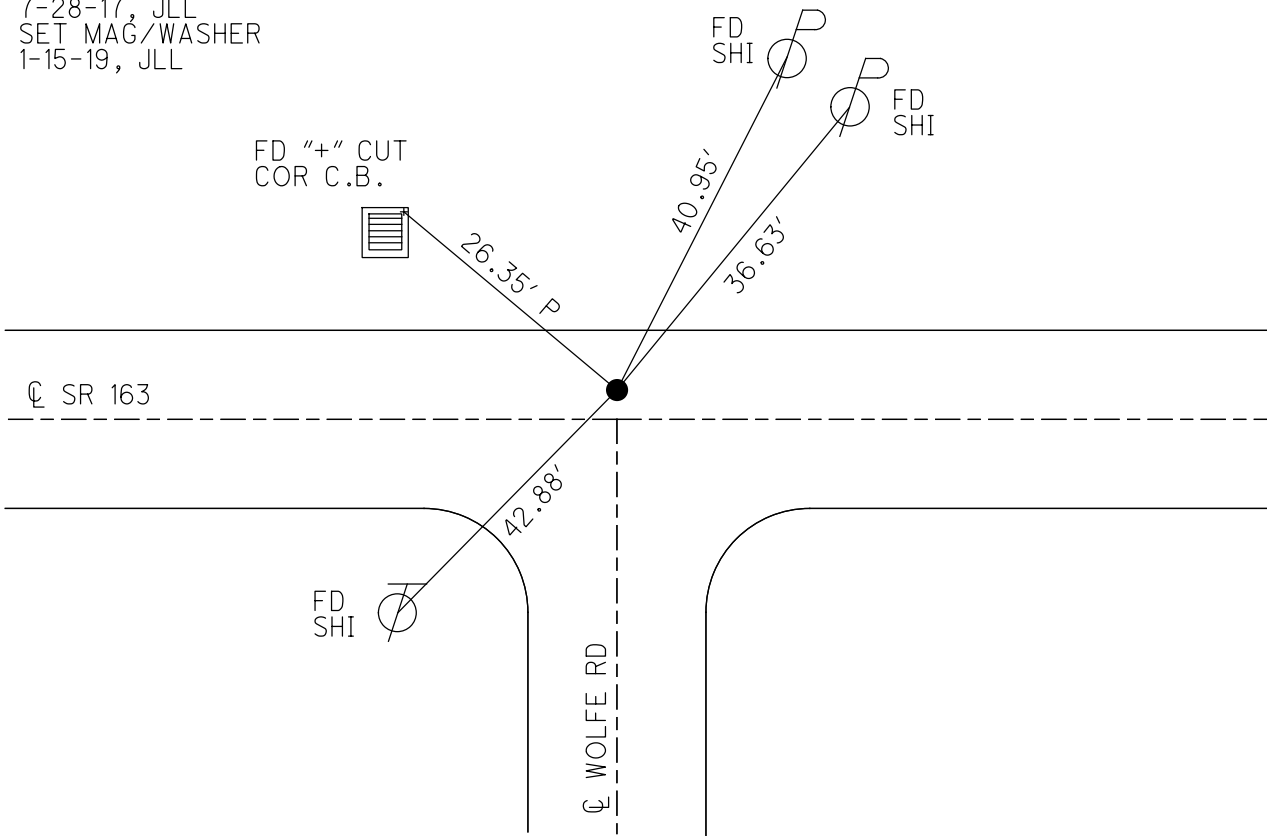
PERSONNEL \_\_\_\_\_ REFERENCE NO. 97 SHEET 67 OF 74  
 NOTES POORE DATE 7-28-17 ROUTE SR 163  
 H.C. LEU WEATHER CLOUDY, WINDY COUNTY OTTAWA  
 R.C. CARSON TEMP. 72° TOWNSHIP ERIE  
 DWG BY JAMES PID 95757 SECTION 5  
 T 7 N R 16 E

TYPE MONUMENT P.K./WASHER  
 ON SURFACE - BELOW 3"  
 OFFSET  $\odot$  PAVEMENT 3.5' LT : ~~RT~~  
7.3' TO LT EDGE PAVEMENT  
 STATION: 1030+62

HORIZ.DATUM: NAD83 2011 GEOID: NAVD88 2012A  
 GRID: NORTHING: 674175.120 EASTING: 1818815.006



RECORD:  
 FD P.K./WASHER  
 8-9-00, SAH  
 SET P.K./WASHER  
 6-7-01, SAH  
 FD P.K./WASHER  
 ON SURFACE  
 REF97  
 5-5-16, DCH  
 7-28-17, JLL  
 SET MAG/WASHER  
 1-15-19, JLL



O.D.O.T. DISTRICT 2 SURVEY OFFICE

PERSONNEL \_\_\_\_\_

REFERENCE NO. 97

SHEET 56 OF 63

NOTES Huss

H.C. GORDON

DATE 8-9-00

ROUTE SR 163

R.C. KARGER

WEATHER Cloudy - Fair

COUNTY OTTAWA

TEMP. +77°F

TOWNSHIP ERIE

SECTION 5

T2 N R 16 E

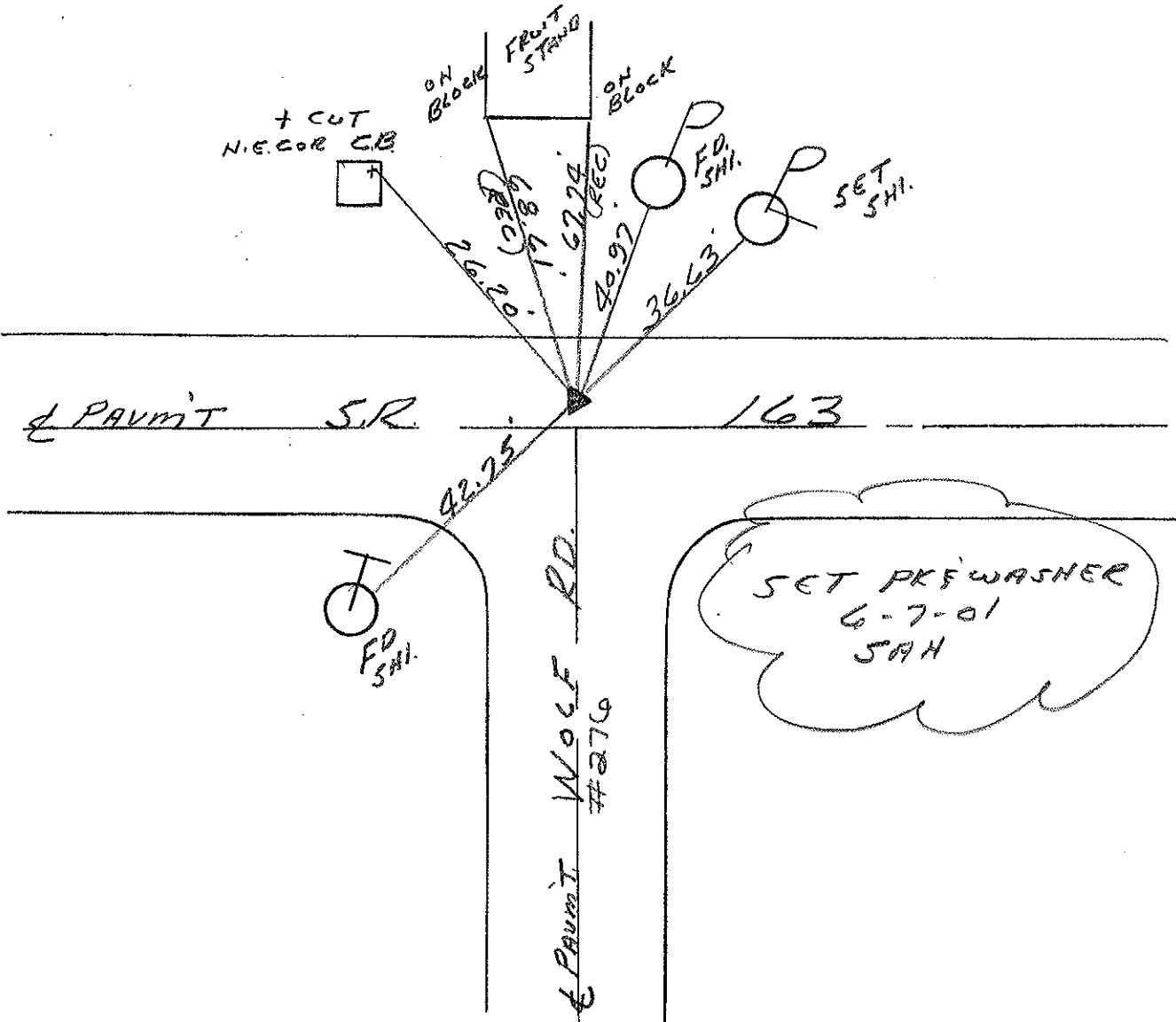
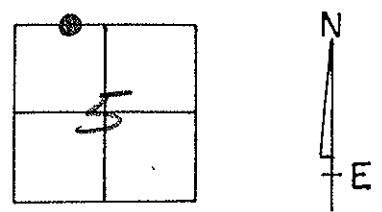
TYPE MONUMENT PKF WASHER

ON SURFACE - BELOW 3"

LEFT - CL PAV'T. - RIGHT 3.5'

2.3 TO LT. EDGE PAVEMENT

S.L.M. 1030+62



O.D.O.T. DISTRICT 2 SURVEY OFFICE

PERSONNEL

REFERENCE NO. 97

SHEET 48 OF     

NOTES Ripple

H.C. BARBOUR

R.C. Geyman

DATE 9/28/90 <sup>DRAWN</sup> 12/27/90

WEATHER Cloudy

TEMP. 65°

ROUTE SR# 163

COUNTY OTAWA

TOWNSHIP Erie

SECTION 5

T7 N R 16 E

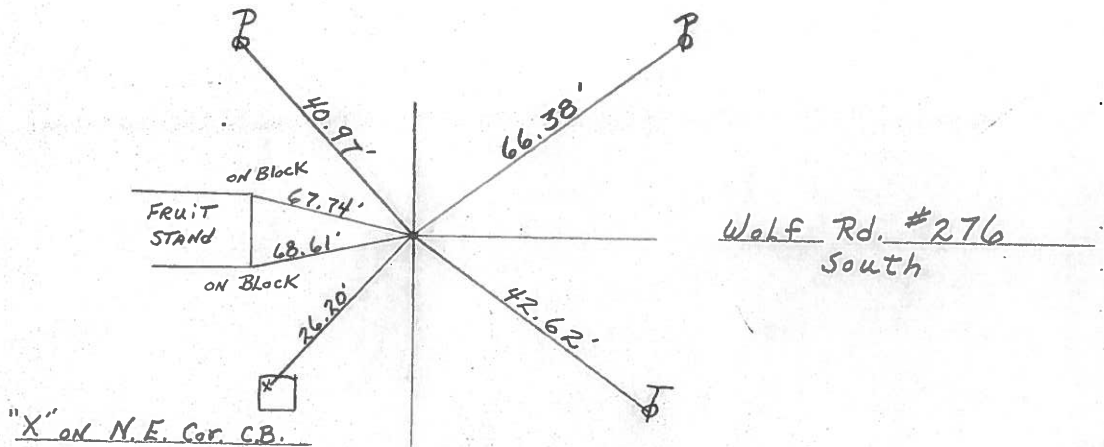
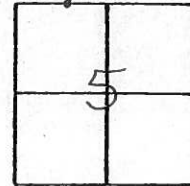
TYPE MONUMENT Dig When Needed

ON SURFACE - BELOW P.K. Nail & Washer

LEFT - & PAV'T. - RIGHT 4.0' LT. & Pav't.

TO      EDGE PAVEMENT

S.L.M.     



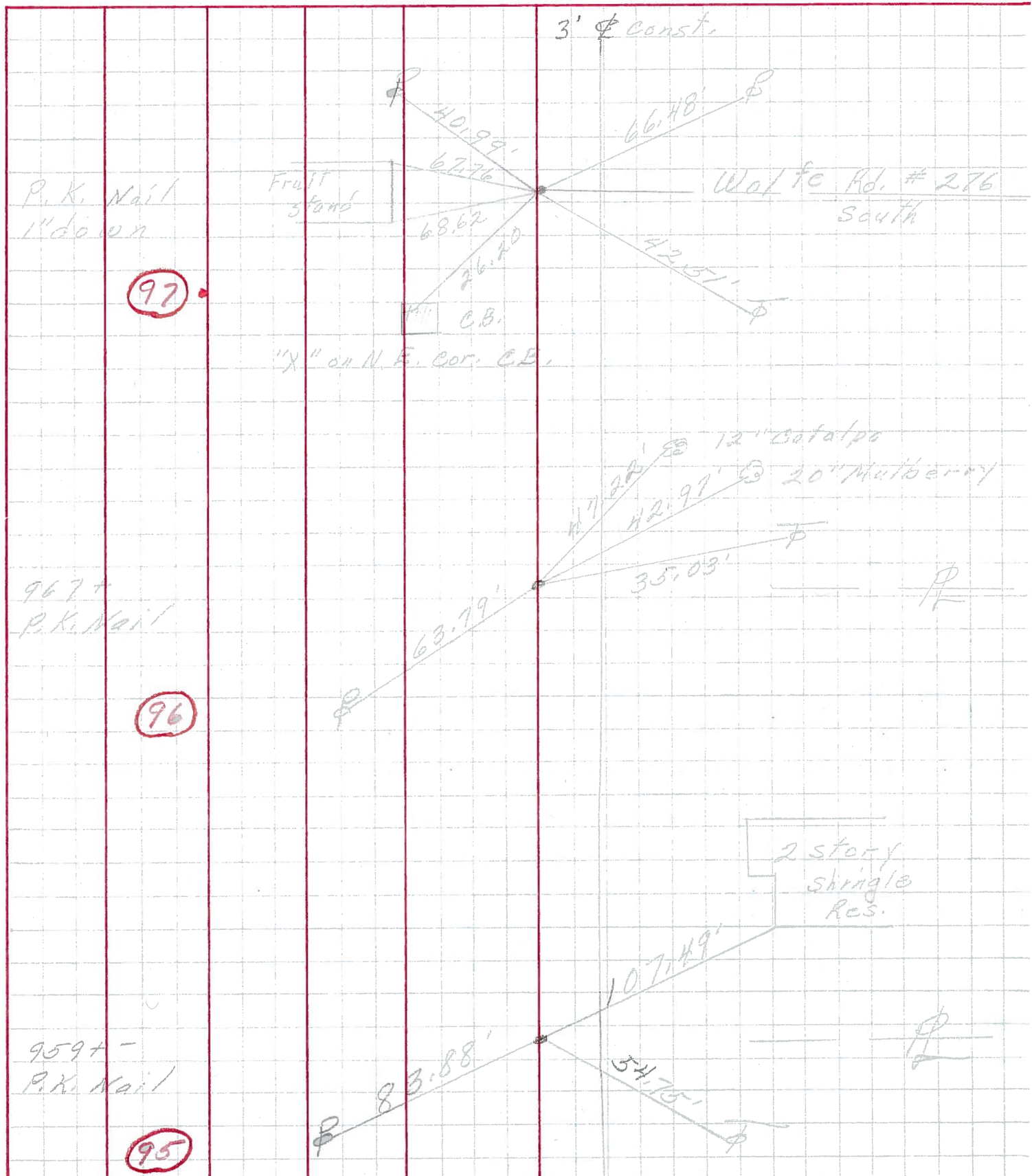
PERSONNEL TITLE PERSONNEL TITLE

COUNTY Ottawa DATE March 1972

S. R. 163 WEATHER

SEC. Oak Harbor East TEMP.

DESCRIPTION Sec 5 Erie Twp. JOB NO.



PERSONNEL	TITLE	PERSONNEL	TITLE	COUNTY	DATE	WEATHER	TEMP.
Schneider		Potts		Ottawa	9-3-68	Fair	75°
Mosser				S. R. 163			
Barbour				SEC. Oak Harbor - East			
Redding							

DESCRIPTION Ties for Control Points JOB NO. \_\_\_\_\_

