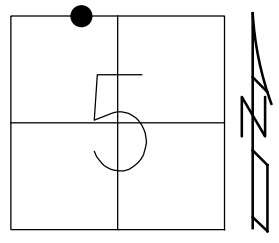


O.D.O.T. DISTRICT 2 SURVEY OFFICE (USE ONLY)

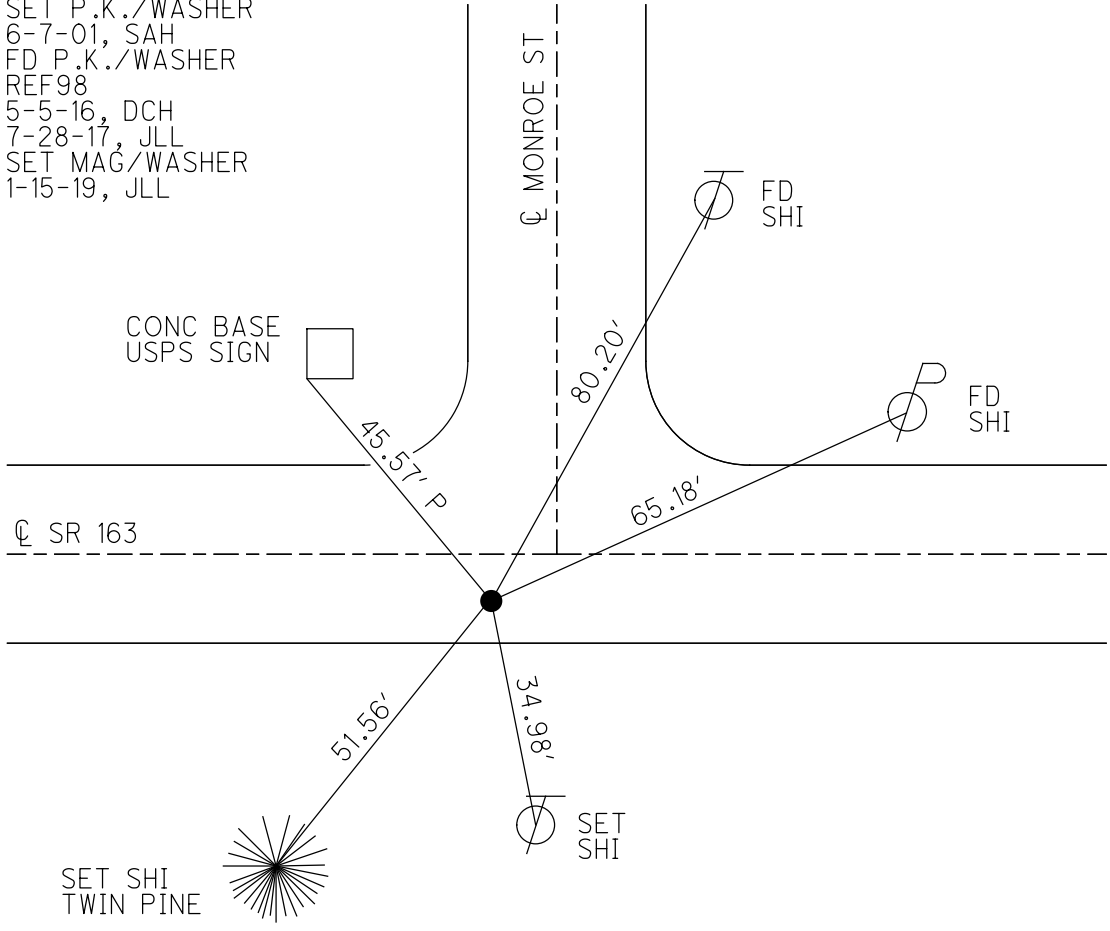
PERSONNEL _____ REFERENCE NO. 98 SHEET 68 OF 74
 NOTES POORE DATE 7-28-17 ROUTE SR 163
 H.C. LEU WEATHER CLOUDY, WINDY COUNTY OTTAWA
 R.C. CARSON TEMP. 72° TOWNSHIP ERIE
 DWG BY JAMES PID 95757 SECTION 5
 T 7 N R 16 E

TYPE MONUMENT P.K./WASHER
~~ON SURFACE~~ - BELOW 4"
 OFFSET \varnothing PAVEMENT 5.4' ~~LT~~ : RT
5.4' TO RT EDGE PAVEMENT
 STATION: 1038+45



HORZ.DATUM: NAD83 2011 GEOID: NAVD88 2012A
 GRID: NORTHING: 674162.194 EASTING: 1819594.686

RECORD: P.I.
 $\Delta = 7^\circ 22'$
 STA 982+40.90
 FD P.K./WASHER
 8-9-00, SAH
 SET P.K./WASHER
 6-7-01, SAH
 FD P.K./WASHER
 REF98
 5-5-16, DCH
 7-28-17, JLL
 SET MAG/WASHER
 1-15-19, JLL



O.D.O.T. DISTRICT 2 SURVEY OFFICE

PERSONNEL

REFERENCE NO. 98

SHEET 57 OF 63

NOTES HUSS

H.C. CORDES

DATE 8-9-00

ROUTE SR 163

R.C. KARGER

WEATHER CLOUDY-FAIR

COUNTY OTTAWA

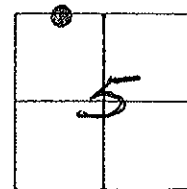
TEMP. +72° F

TOWNSHIP ERIE

SECTION 5

T2 NR _____

TYPE MONUMENT PK & WASHER
 ON SURFACE - BELOW 4"
~~LEFT~~ - & PAV'T. - RIGHT 54'
5.4 TO RT. EDGE PAVEMENT
 S.L.M. 1038 + 45



P.I.

$\Delta = 7-22'$

REC.

982 + 40.90

SET PK & WASHER
 6-7-01
 JAH

2.05 UP
 CONC. BASE

& PAVMT. MONROE ST
 (NORTH)

FO. SHI.

80.11'

58.82'

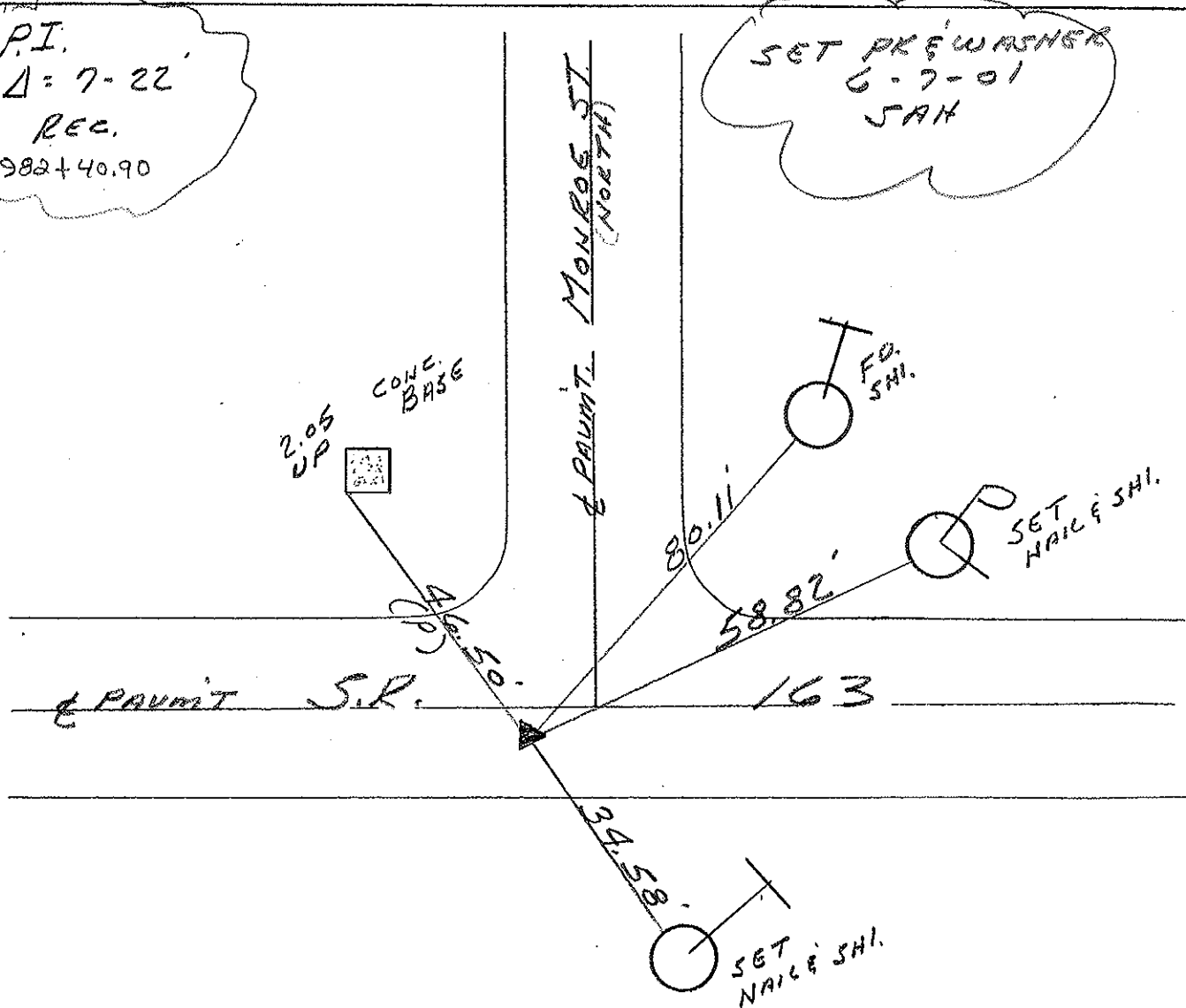
SET NAIL & SHI.

& PAVMT. S.R.

163

34.58'

SET NAIL & SHI.



O.D.O.T. DISTRICT 2 SURVEY OFFICE

PERSONNEL _____

REFERENCE NO. 98

SHEET 49 OF _____

NOTES RIPPLE

H.C. BARBOUR

R.C. GEYMAN

DATE 9/28/90 ^{DRAWN} 12/27/90

WEATHER Cloudy

TEMP. 65°

ROUTE SR. #163

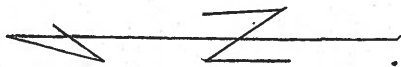
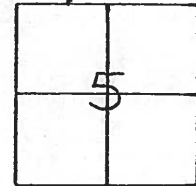
COUNTY OTTAWA

TOWNSHIP ERIC

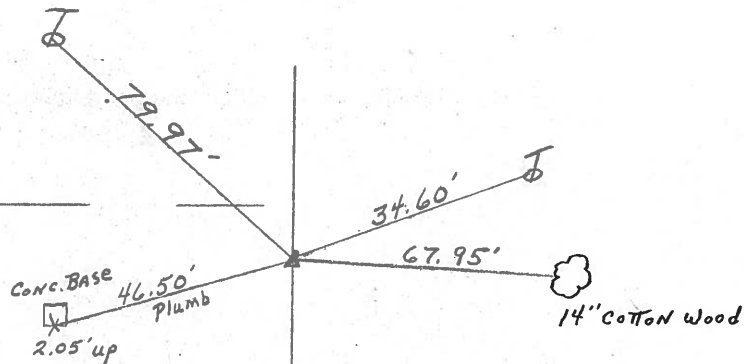
SECTION 5

T 7 N R 16 E

TYPE MONUMENT SET P.K. Nail & Washer
 ON SURFACE - BELOW P.K. Nail & Washer ATOP Rk Spike
 LEFT - ¢ PAV'T. - RIGHT 4.5' RT. & PAV'T.
 _____ TO _____ EDGE PAVEMENT
 S.L.M. 982+40.90

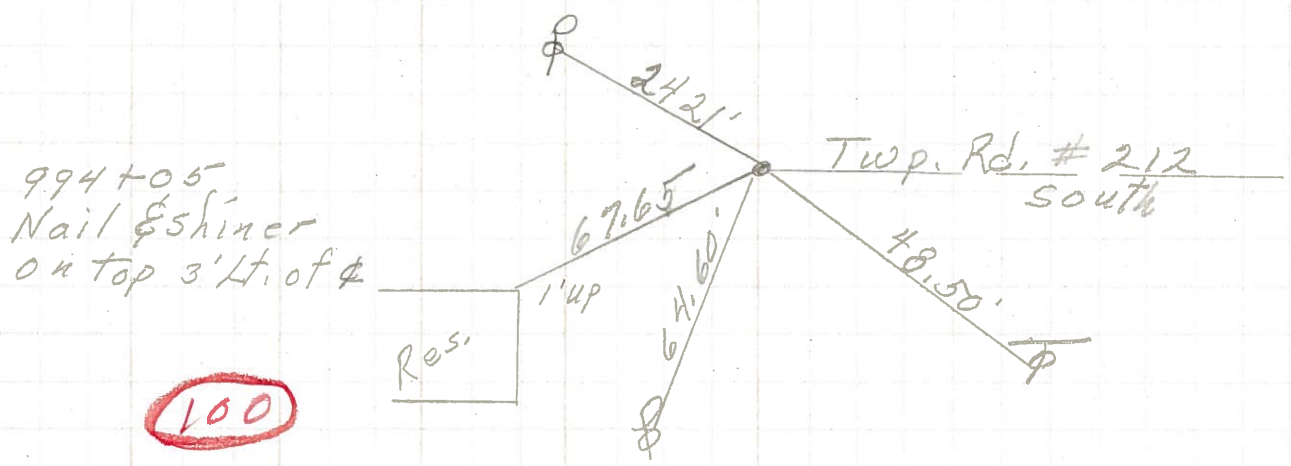


MONROE ST.
NORTH

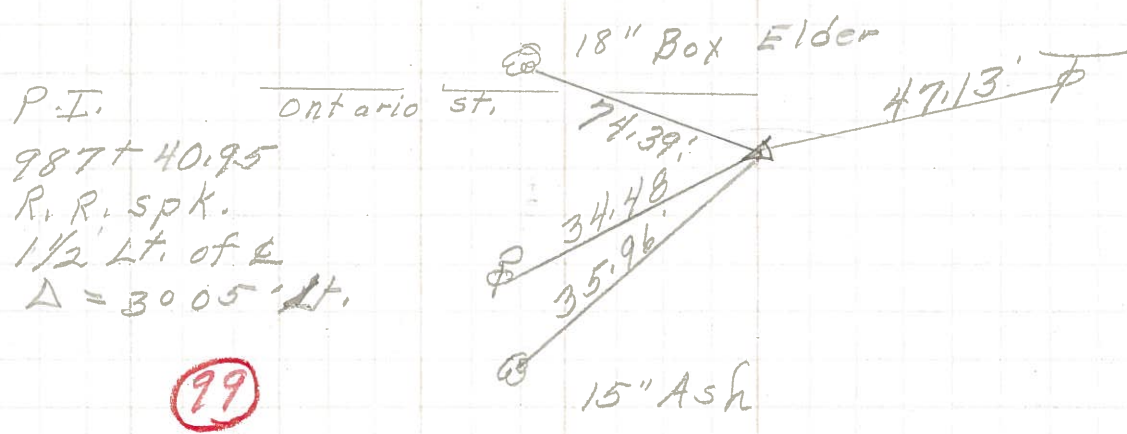


P.I.
Δ = 7°22'

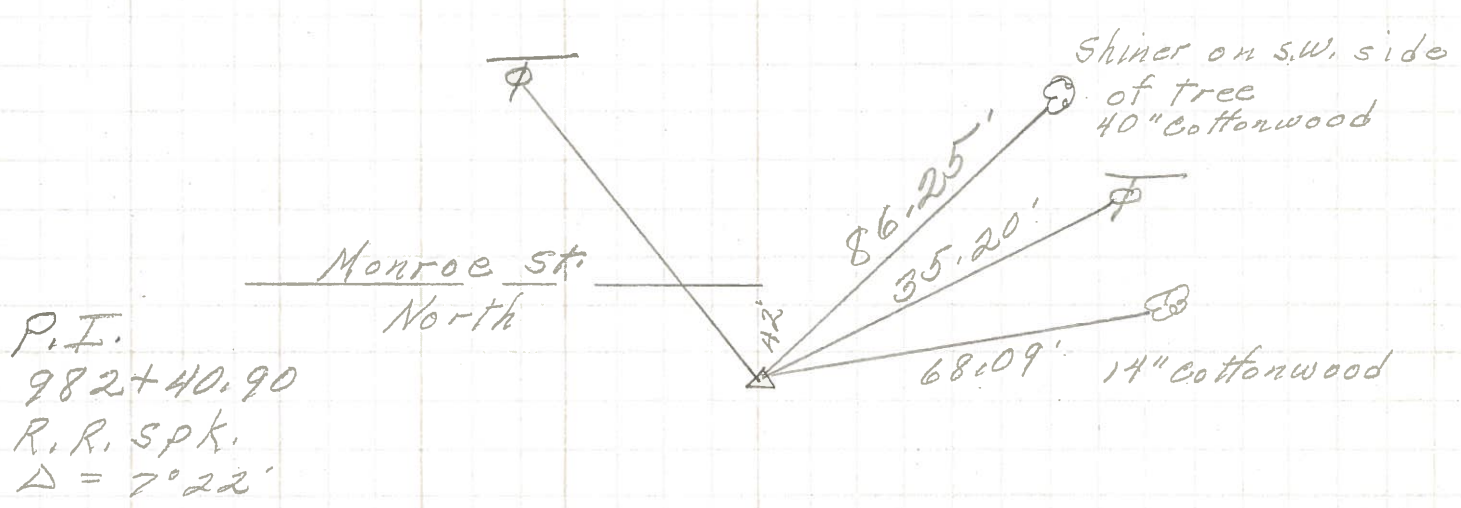
PERSONNEL	TITLE	PERSONNEL	TITLE
COUNTY _____ DATE <u>March 1972</u>			
S. R. _____ WEATHER _____			
SEC. <u>Lacarne</u> TEMP. _____			
DESCRIPTION <u>Sec 5 Erie Twp.</u> JOB NO. _____			
	LEFT	CENTER LINE	RIGHT



100



99



98

PERSONNEL	TITLE	PERSONNEL	TITLE	COUNTY	DATE
Schneider		Potts		Ottawa	9-3-68
Mosser				S. R. 163	WEATHER Fair
Barbour				SEC. Oak Harbor - East	TEMP. 75°
Redding					

DESCRIPTION Ties for Control Points JOB NO. _____

