

O.D.O.T. DISTRICT 2 SURVEY OFFICE (USE ONLY)

PERSONNEL

REFERENCE NO. 99

SHEET 69 OF 74

NOTES POORE

DATE 7-28-17

ROUTE SR 163

H.C. LEU

WEATHER CLOUDY, WINDY

COUNTY OTTAWA

R.C. CARSON

TEMP. 72°

TOWNSHIP ERIE

SECTION 5

DWG BY JAMES PID 95757

T 7 N R 16 E

TYPE MONUMENT P.K./WASHER

ON SURFACE - ~~BELOW~~ ON

OFFSET  $\text{\textcircled{C}}$  PAVEMENT 2' LT : ~~RT~~

12.4' TO RT EDGE PAVEMENT

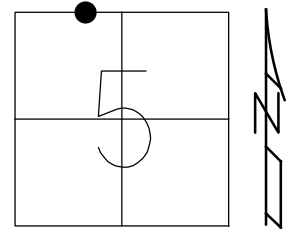
STATION: 1043+49

HORZ.DATUM: NAD83 2011

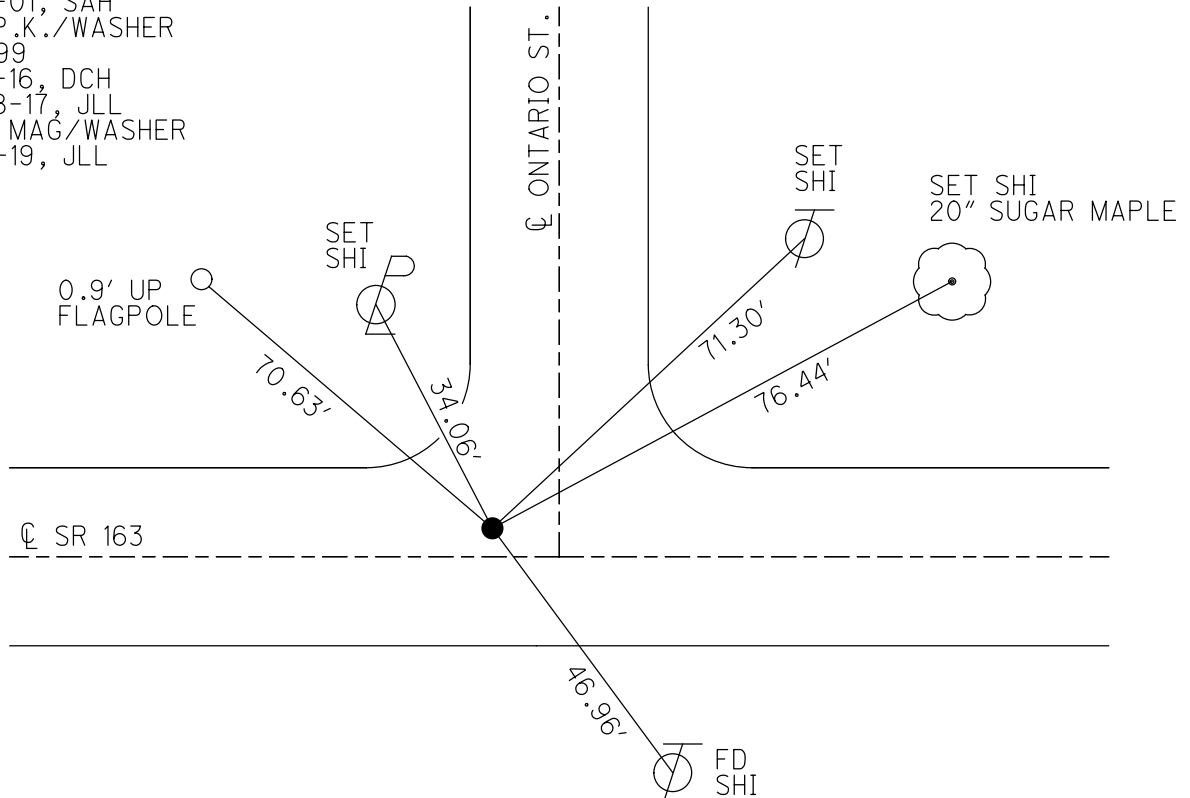
GEOID: NAVD88 2012A

GRID: NORTHING: 674217.703

EASTING: 1820091.771



RECORD: P.I.  
 $\Delta = 3^{\circ} 5' \text{ LT}$   
 STA 987+40.95  
 FD P.K./WASHER  
 8-9-00, SAH  
 SET P.K./WASHER  
 6-7-01, SAH  
 FD P.K./WASHER  
 REF99  
 5-5-16, DCH  
 7-28-17, JLL  
 SET MAG/WASHER  
 1-17-19, JLL



# O.D.O.T. DISTRICT 2 SURVEY OFFICE

PERSONNEL \_\_\_\_\_

REFERENCE NO. 99

SHEET 58 OF 63

NOTES Huss

H.C. Cardes

R.C. Morgan

DATE 8-9-00

WEATHER Clidy-fair

TEMP. +78°

ROUTE SR-163

COUNTY Ottawa

TOWNSHIP Emile

SECTION 5

T 7 N R 16 E

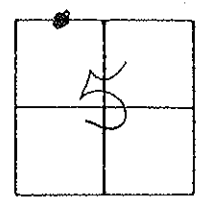
TYPE MONUMENT PK/w

~~(ON SURFACE)~~ - ~~BELOW~~ Surf.

~~(LEFT)~~ ~~PAINT~~ ~~(RIGHT)~~ 2' Lt.

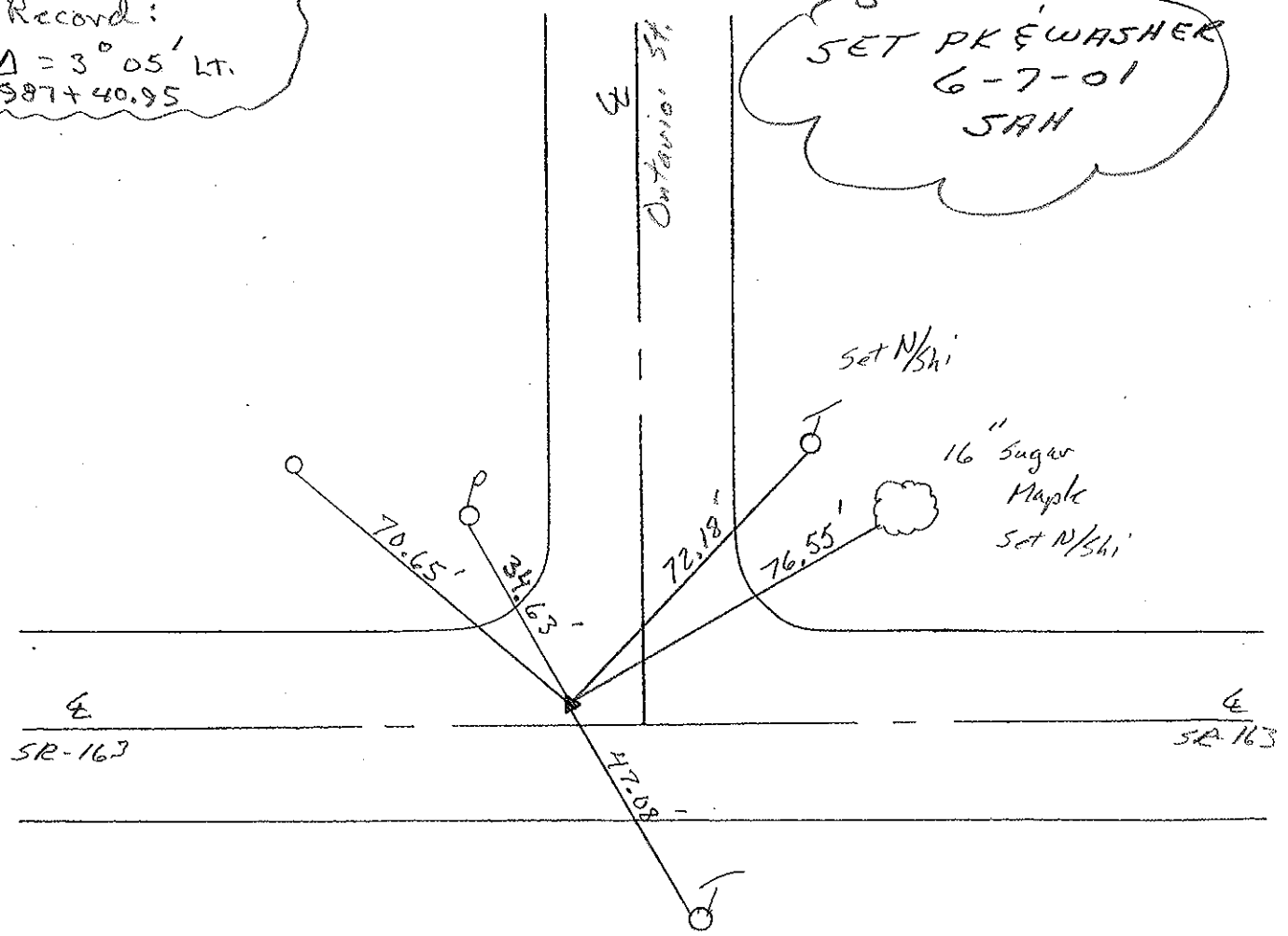
12.4 TO RT. EDGE PAVEMENT

S.L.M. 1043+49



Record:  
 $\Delta = 3^{\circ} 05' \text{ Lt.}$   
987+40.95

SET PK & WASHER  
 6-7-01  
 SAH



O.D.O.T. DISTRICT 2 SURVEY OFFICE

PERSONNEL

REFERENCE NO. 99

SHEET 50 OF     

NOTES Ripple

H.C. BARBOUR

DATE 9/28/90 <sup>DRAWN</sup> 12/27/90

ROUTE SR#163

R.C. GEYMAN

WEATHER Cloudy

COUNTY OTTAWA

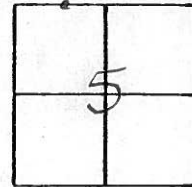
TEMP. 65°

TOWNSHIP ERIC

SECTION 5

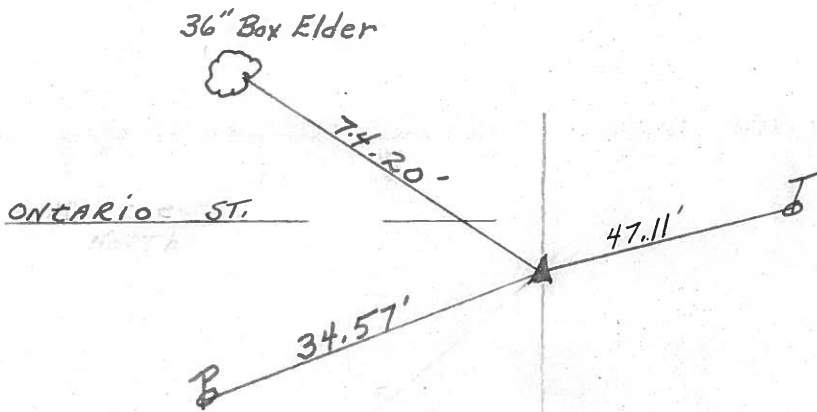
T7 N R 16 E

TYPE MONUMENT Set P.K. Nail Washer  
ON SURFACE - BELOW P.K. Nail Washer ATop R/R spike  
LEFT - ¢ PAV'T. - RIGHT 1' LT. & PAVM'T.  
     TO      EDGE PAVEMENT  
S.L.M. 987+40.95



P.I.

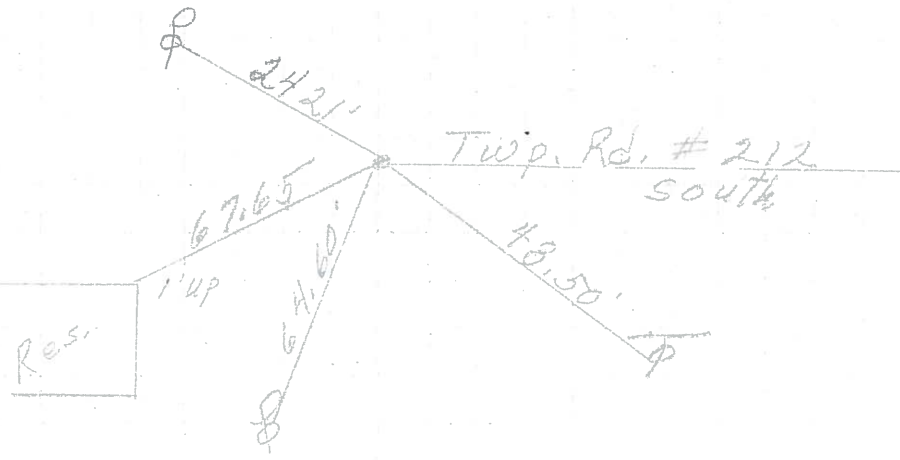
Δ = 3° 05' LT.



| PERSONNEL   | TITLE                  | PERSONNEL   | TITLE | COUNTY              | DATE              |
|-------------|------------------------|-------------|-------|---------------------|-------------------|
|             |                        |             |       |                     | <u>March 1972</u> |
|             |                        |             |       | S. R.               | WEATHER           |
|             |                        |             |       | SEC. <u>Lacarne</u> | TEMP.             |
| DESCRIPTION | <u>Sec 5 Erie Twp.</u> |             |       | JOB NO.             |                   |
|             | LEFT                   | CENTER LINE | RIGHT |                     |                   |

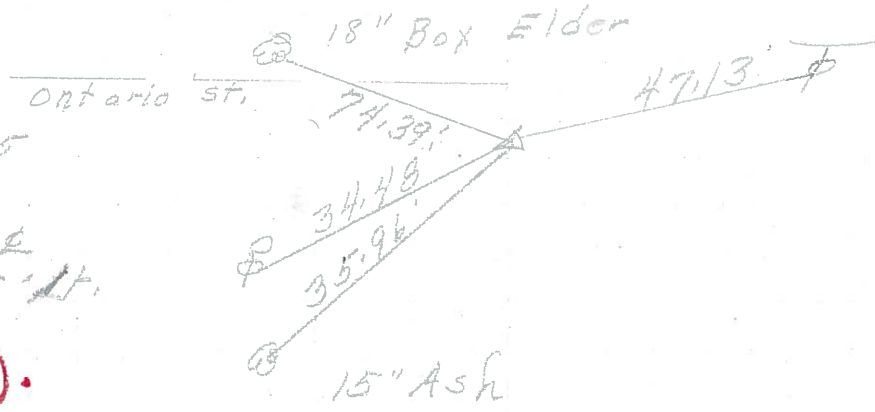
994+05  
Nail & shiner  
on top 3' Lt. of  $\phi$

**100**



P.I.  
987+40.95  
R. R. spk.  
1/2 Lt. of  $\phi$   
 $\Delta = 30.05'$

**99**



P.I.  
982+40.90  
R. R. spk.  
 $\Delta = 7^{\circ}22'$

**98**

