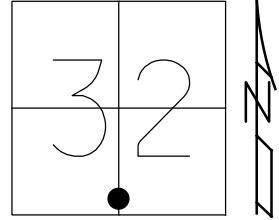


O.D.O.T. DISTRICT 2 SURVEY OFFICE (USE ONLY)

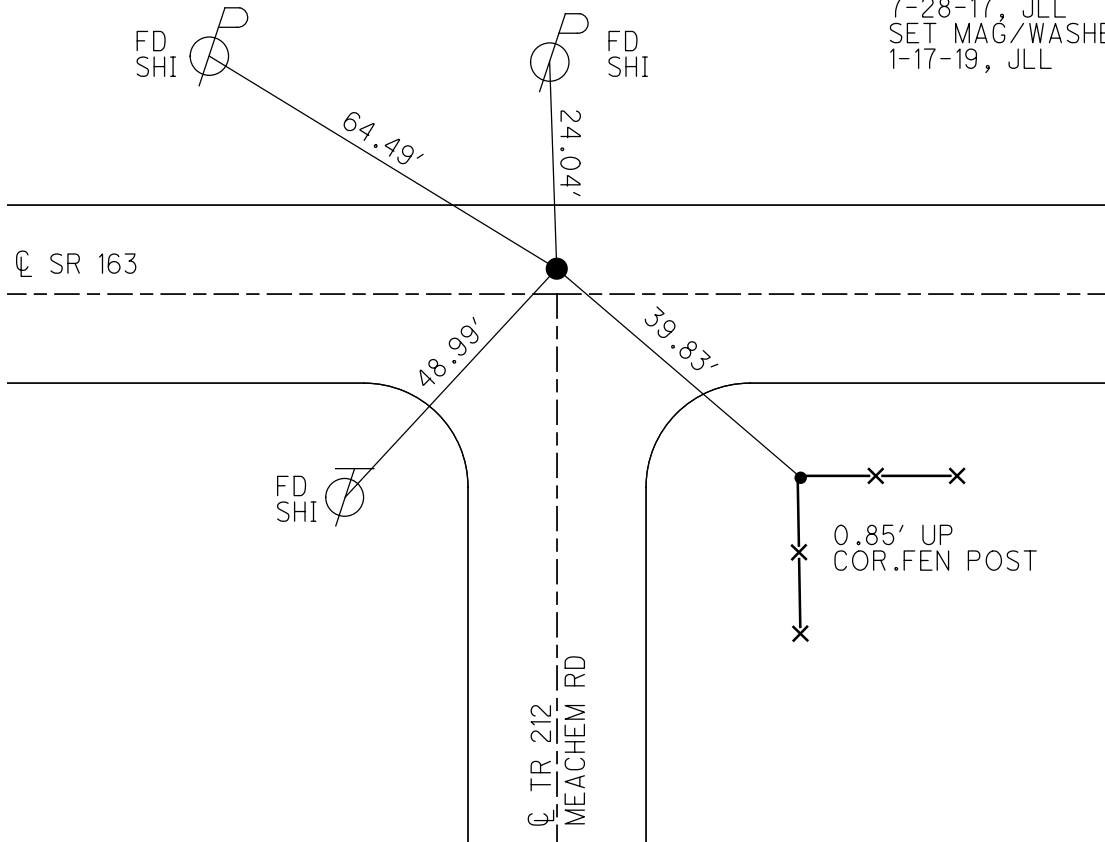
PERSONNEL \_\_\_\_\_ REFERENCE NO. 100 SHEET 70 OF 74  
 NOTES POORE DATE 7-28-17 ROUTE SR 163  
 H.C. LEU WEATHER CLOUDY, WINDY COUNTY OTTAWA  
 R.C. CARSON TEMP. 73° TOWNSHIP ERIE  
 DWG BY JAMES PID 95757 SECTION 32  
 T 7 N R 16 E

TYPE MONUMENT P.K./WASHER  
 ON SURFACE - ~~BELOW~~ ON  
 OFFSET ☉ PAVEMENT 2.5' LT : ~~RT~~  
8.2' TO LT EDGE PAVEMENT  
 STATION: 1050+14

HORZ.DATUM: NAD83 2011 GEOID: NAVD88 2012A  
 GRID: NORTHING: 674326.920 EASTING: 1820746.387



RECORD:  
 FD P.K./WASHER  
 8-9-00, SAH  
 SET P.K./WASHER  
 6-7-01, SAH  
 FD P.K./WASHER  
 4" DOWN  
 REF100  
 5-5-16, DCH  
 7-28-17, JLL  
 SET MAG/WASHER  
 1-17-19, JLL



# O.D.O.T. DISTRICT 2 SURVEY OFFICE

PERSONNEL \_\_\_\_\_

REFERENCE NO. 100

SHEET 59 OF 63

NOTES Huss

H.C. Cordes

R.C. Karger

DATE 8-9-00

WEATHER Clay-Fair

TEMP. +79°F

ROUTE SR-163

COUNTY Ottawa

TOWNSHIP Eric

SECTION 32

T 7 N R 16 E

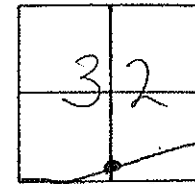
TYPE MONUMENT PK/W

ON SURFACE - ~~BELOW~~ Surface

LEFT - ~~PAV~~ RIGHT 2.5' Lt

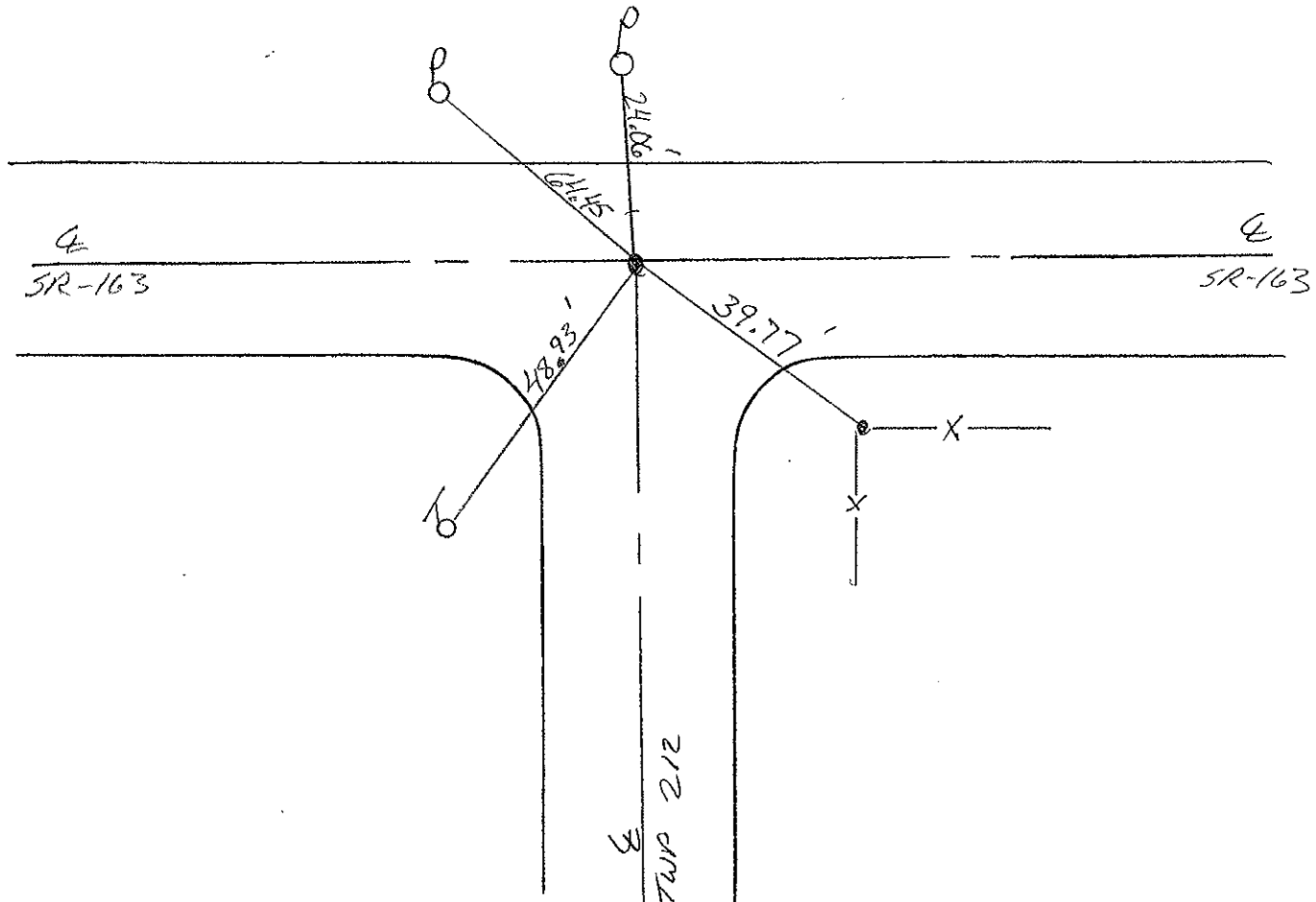
8.2 TO Lt. EDGE PAVEMENT

S.L.M. 1050+14



Record:  
Plan Sta - 994+05

SET PK & WASHER  
6-7-01  
SAH



O.D.O.T. DISTRICT 2 SURVEY OFFICE

PERSONNEL

REFERENCE NO. 100

SHEET 51 OF     

NOTES RIPPLE

H.C. BARBOUR

R.C. GEYMAN

DATE 9/28/90 <sup>DRAWN</sup>  
1/09/91

WEATHER Cloudy

TEMP. 65°

ROUTE SR. #163

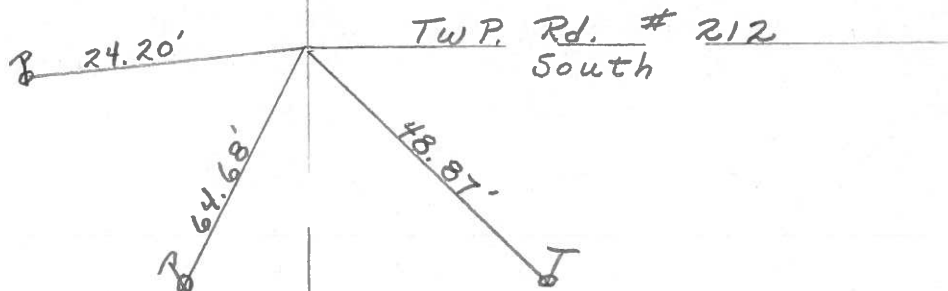
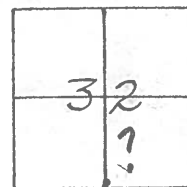
COUNTY OTTAWA

TOWNSHIP Erie

SECTION 32

T7 N R 16 E

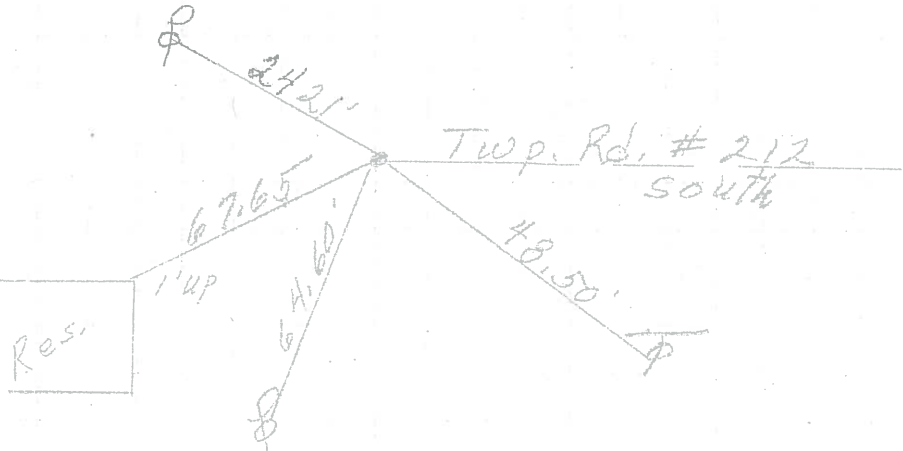
TYPE MONUMENT SET P.K. NAIL & WASHER  
ON SURFACE - BELOW P.K. NAIL & SHINER  
LEFT - & PAV'T. - RIGHT 1 1/2' LT. & PAV'T.  
     TO      EDGE PAVEMENT  
S.L.M. 994+05



PERSONNEL	TITLE	PERSONNEL	TITLE	COUNTY	DATE
					<u>March 1972</u>
				S. R.	WEATHER
				SEC. <u>Lacarne</u>	TEMP.
DESCRIPTION	<u>Sec 5</u>	<u>Eria Twp.</u>			JOB NO.
	LEFT	CENTER LINE	RIGHT		

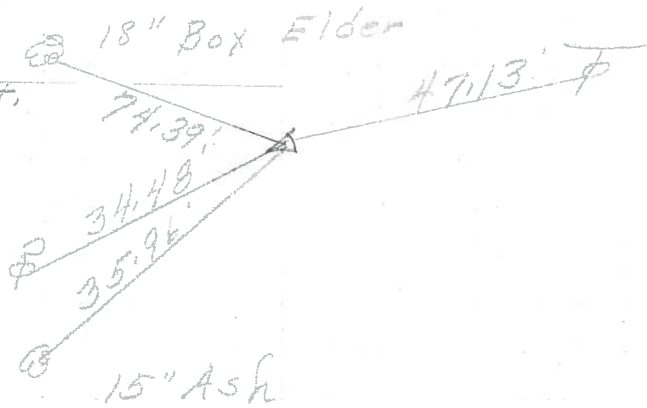
994+05  
Nail & shiner  
on top 3' Lt. of  $\phi$

**100**



P.I.  
987+40.95  
R.R. spk.  
1 1/2 Lt. of  $\phi$   
 $\Delta = 30.05'$

**99**



P.I.  
982+40.90  
R.R. spk.  
 $\Delta = 7^{\circ}22'$

**98**

