

O.D.O.T. DISTRICT 2 SURVEY OFFICE (USE ONLY)

PERSONNEL

REFERENCE NO. 101

SHEET 71 OF 74

NOTES POORE  
 H.C. LEU  
 R.C. CARSON

DATE 7-28-17  
 WEATHER CLOUDY, WINDY  
 TEMP. 72°

ROUTE SR 163  
 COUNTY OTTAWA  
 TOWNSHIP ERIE  
 SECTION 32  
 T 7 N R 16 E

DWG BY JAMES PID 95757

TYPE MONUMENT P.K./WASHER

ON SURFACE - ~~BELOW~~ ON

OFFSET  $\varnothing$  PAVEMENT ON \_\_\_\_\_ LT : RT

11.4' TO RT EDGE PAVEMENT

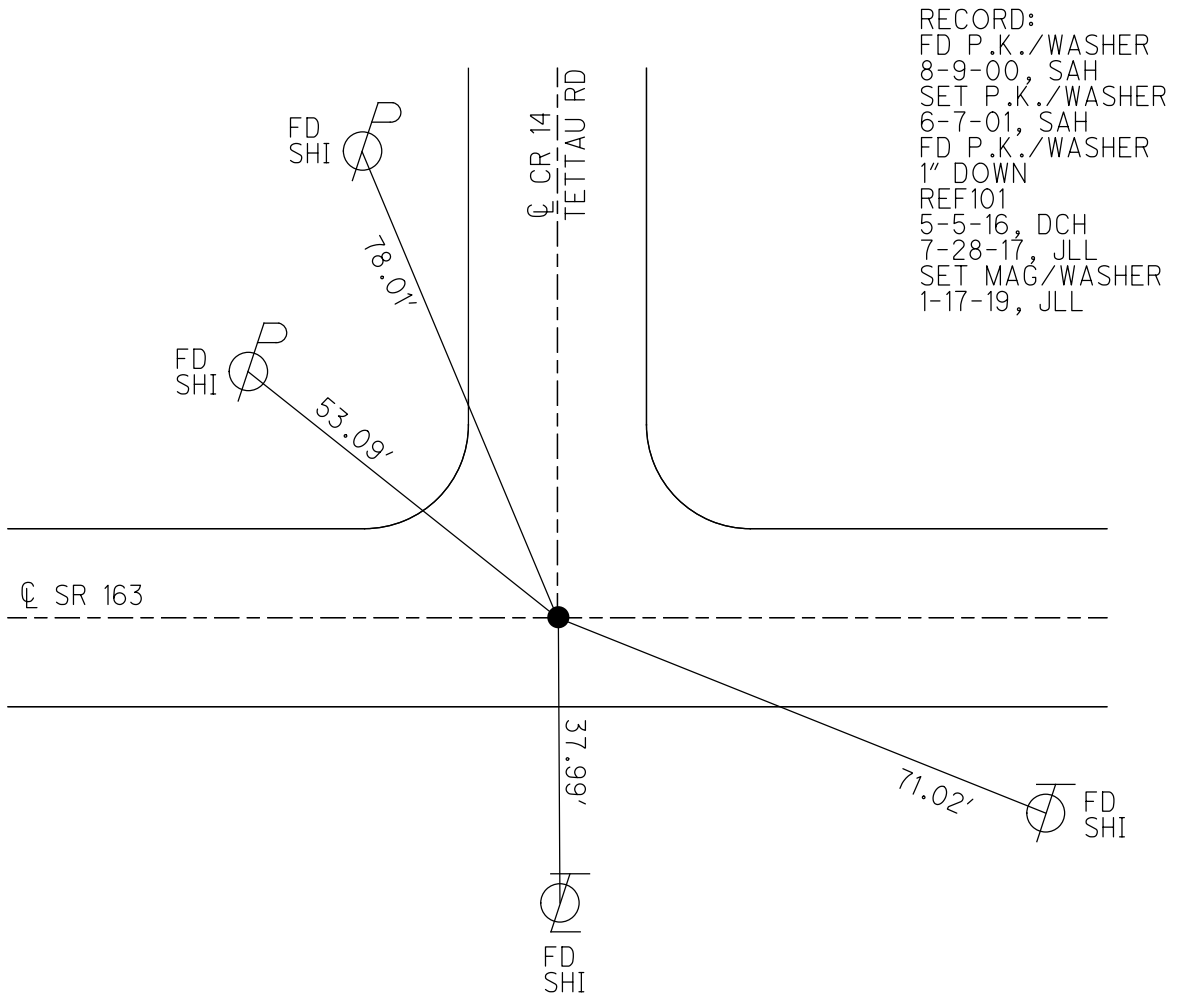
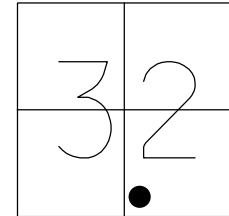
STATION: 1052+18

HORZ.DATUM: NAD83 2011

GEOID: NAVD88 2012A

GRID: NORTHING: 674357.741

EASTING: 1820947.429



RECORD:  
 FD P.K./WASHER  
 8-9-00, SAH  
 SET P.K./WASHER  
 6-7-01, SAH  
 FD P.K./WASHER  
 1" DOWN  
 REF101  
 5-5-16, DCH  
 7-28-17, JLL  
 SET MAG/WASHER  
 1-17-19, JLL

O.D.O.T. DISTRICT 2 SURVEY OFFICE

PERSONNEL \_\_\_\_\_

REFERENCE NO. 101

SHEET 60 OF 63

NOTES Huss

H.C. Condes

R.C. Kangor

DATE 8-9-00

WEATHER Cldy-Fair

TEMP. +79° F

ROUTE SR-163

COUNTY Ottawa

TOWNSHIP Eric

SECTION 32

T 7 N R 16 E

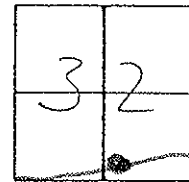
TYPE MONUMENT PX/W

ON SURFACE - ~~BELOW~~ Surf.

~~PAV'T.~~ on G

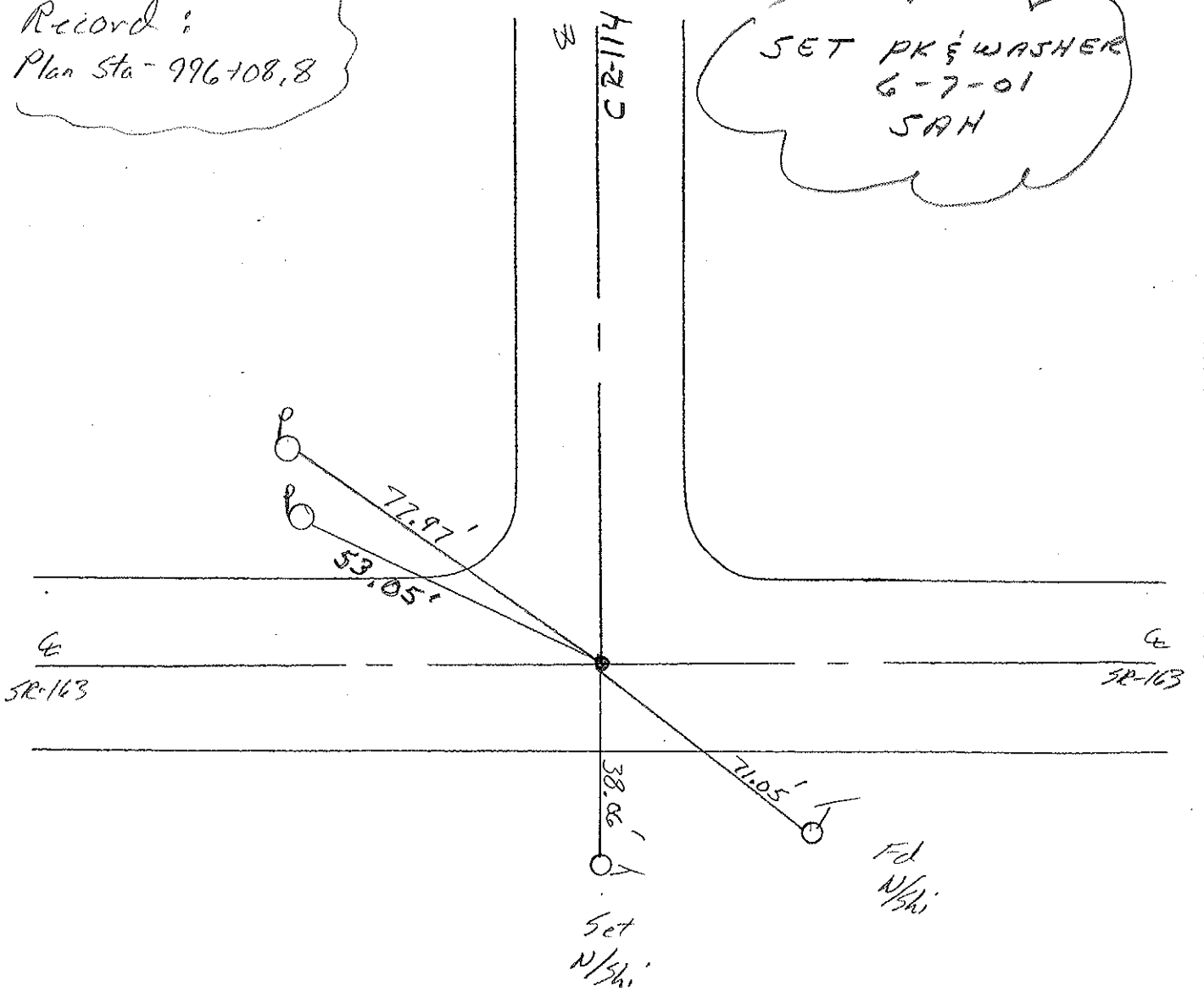
114' TO Rt. EDGE PAVEMENT

S.L.M. 1052 + 18



Record:  
Plan Sta - 996+08.8

SET PK & WASHER  
6-7-01  
SAH



O.D.O.T. DISTRICT 2 SURVEY OFFICE

PERSONNEL

REFERENCE NO. 101

SHEET 52 OF     

NOTES RIPPLE

H.C. BARBOUR

R.C. GEYMAN

DATE 9/28/90 <sup>DRAWN</sup> 1/09/91

WEATHER Cloudy

TEMP. 70°

ROUTE SR#163

COUNTY OTTAWA

TOWNSHIP ERIC

SECTION 32

T7 N R 16 E

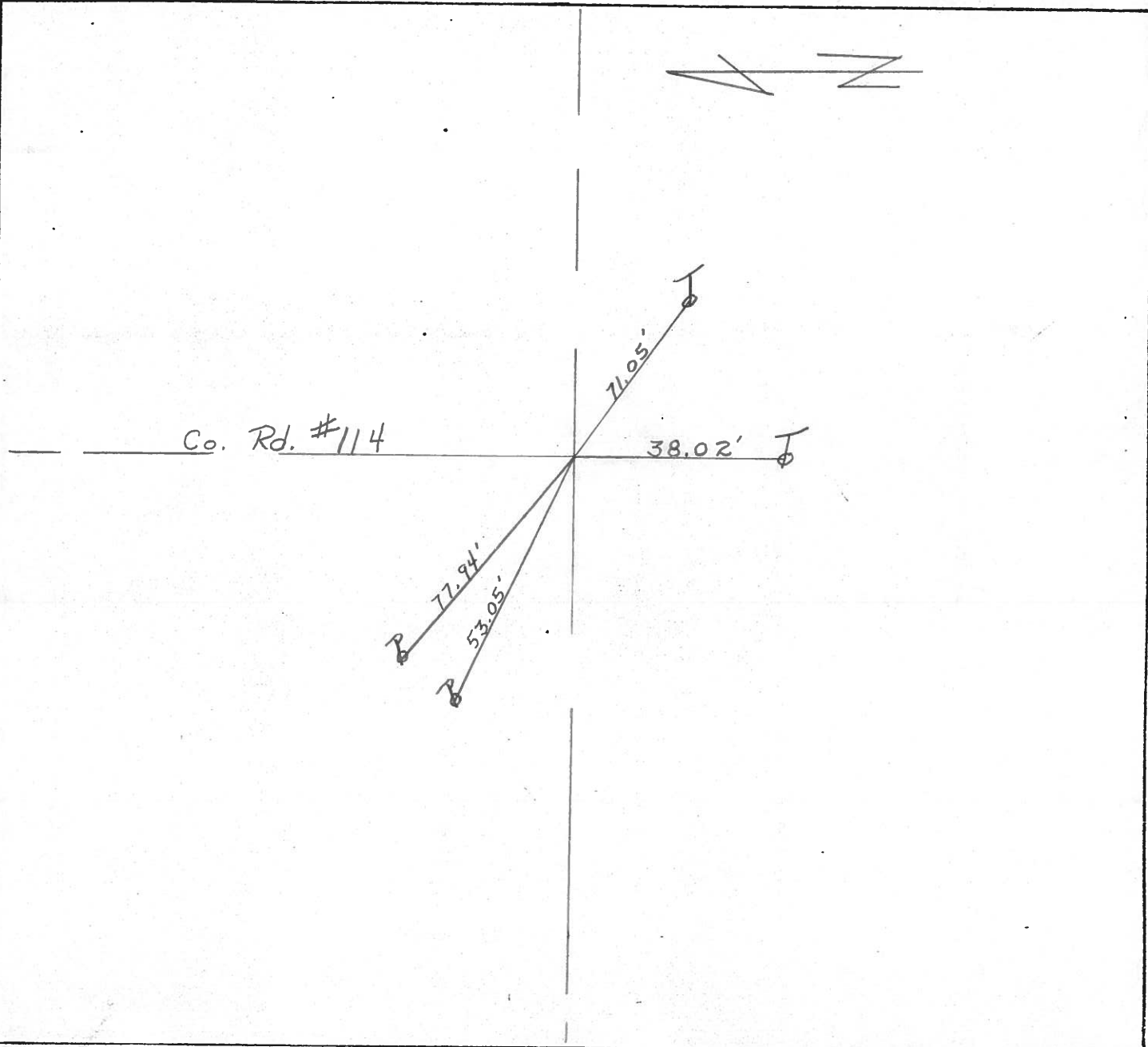
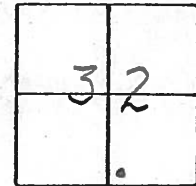
TYPE MONUMENT Set P.K. Nail & Washer

ON SURFACE - BELOW P.K. & Washer

LEFT - & PAV'T. - RIGHT ON &

     TO      EDGE PAVEMENT

S.L.M. 996+08.8



PERSONNEL	TITLE	PERSONNEL	TITLE

COUNTY Ottawa DATE March 1972  
 S. R. 163 WEATHER    
 SEC. 5 TEMP.  

DESCRIPTION Erie Twp. JOB NO.    
 LEFT CENTER LINE RIGHT

