

O.D.O.T. DISTRICT 2 SURVEY OFFICE (USE ONLY)

PERSONNEL

REFERENCE NO. 102

SHEET 72 OF 74

NOTES POORE

DATE 7-28-17

ROUTE SR 163

H.C. LEU

WEATHER CLOUDY, WINDY

COUNTY OTTAWA

R.C. CARSON

TEMP. 72°

TOWNSHIP ERIE

DWG BY JAMES PID 95757

SECTION 33

T 7 N R 16 E

TYPE MONUMENT P.K./WASHER

~~ON SURFACE~~ - BELOW 1"

OFFSET  $\oslash$  PAVEMENT ON LT : RT

10.7' TO RT EDGE PAVEMENT

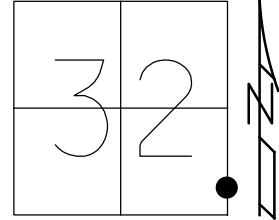
STATION: 1071+73

HORZ.DATUM: NAD83 2011

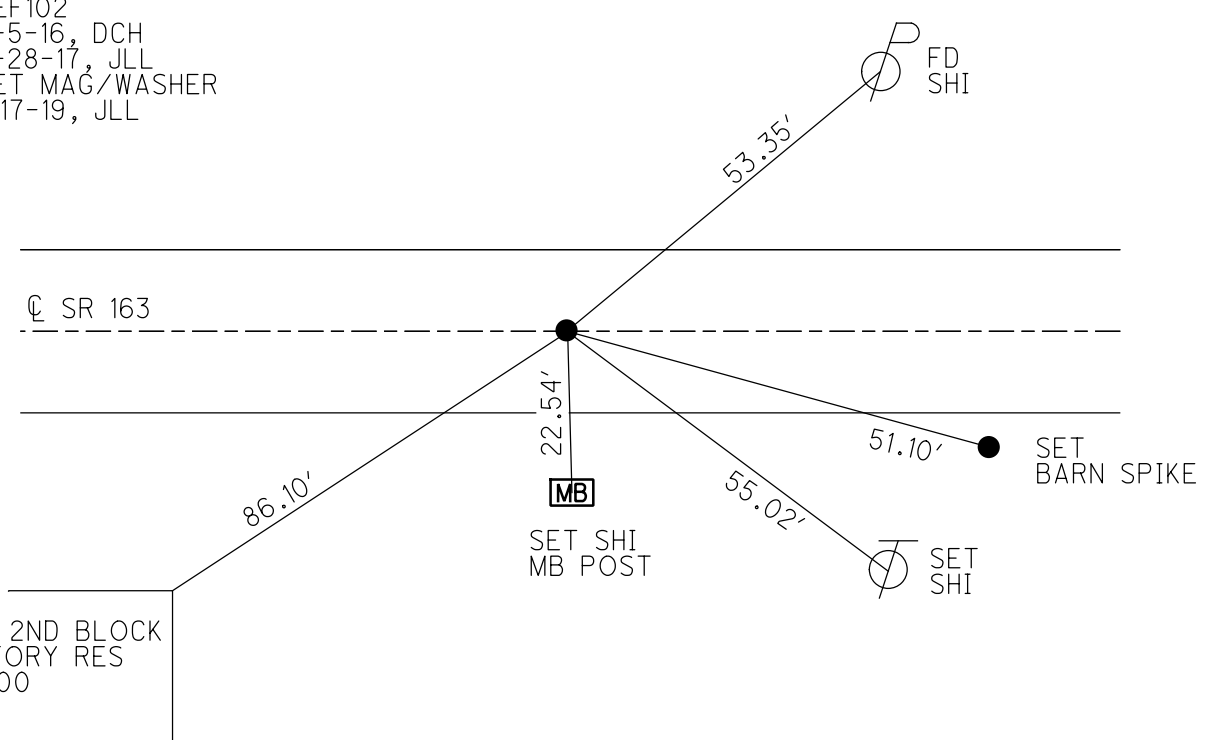
GEOID: NAVD88 2012A

GRID: NORTHING: 674680.291

EASTING: 1822870.987



RECORD: P.I.  
 $\Delta = 0^\circ 26'$  RT  
 STA 1015+59.1  
 FD P.K./WASHER  
 8-9-00, SAH  
 SET P.K./WASHER  
 5-7-01, SAH  
 FD P.K./WASHER  
 1" DOWN  
 REF102  
 5-5-16, DCH  
 7-28-17, JLL  
 SET MAG/WASHER  
 1-17-19, JLL



TOP 2ND BLOCK  
 2 STORY RES  
 #5000

O.D.O.T. DISTRICT 2 SURVEY OFFICE

PERSONNEL

REFERENCE NO. 102

SHEET 61 OF 63

NOTES HUSS

H.C. CORDES

R.C. KARGER

DATE 8-9-00

WEATHER CLOUDY - FAIR

TEMP. +79° F

ROUTE SR 163

COUNTY OTTAWA

TOWNSHIP ERIE

SECTION 33

T. 2 N R. 16 E

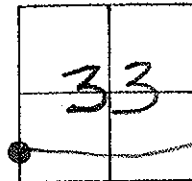
TYPE MONUMENT PK NAIL & WASHER

ON SURFACE - BELOW YES

LEFT - C. PAV'T. - RIGHT YES

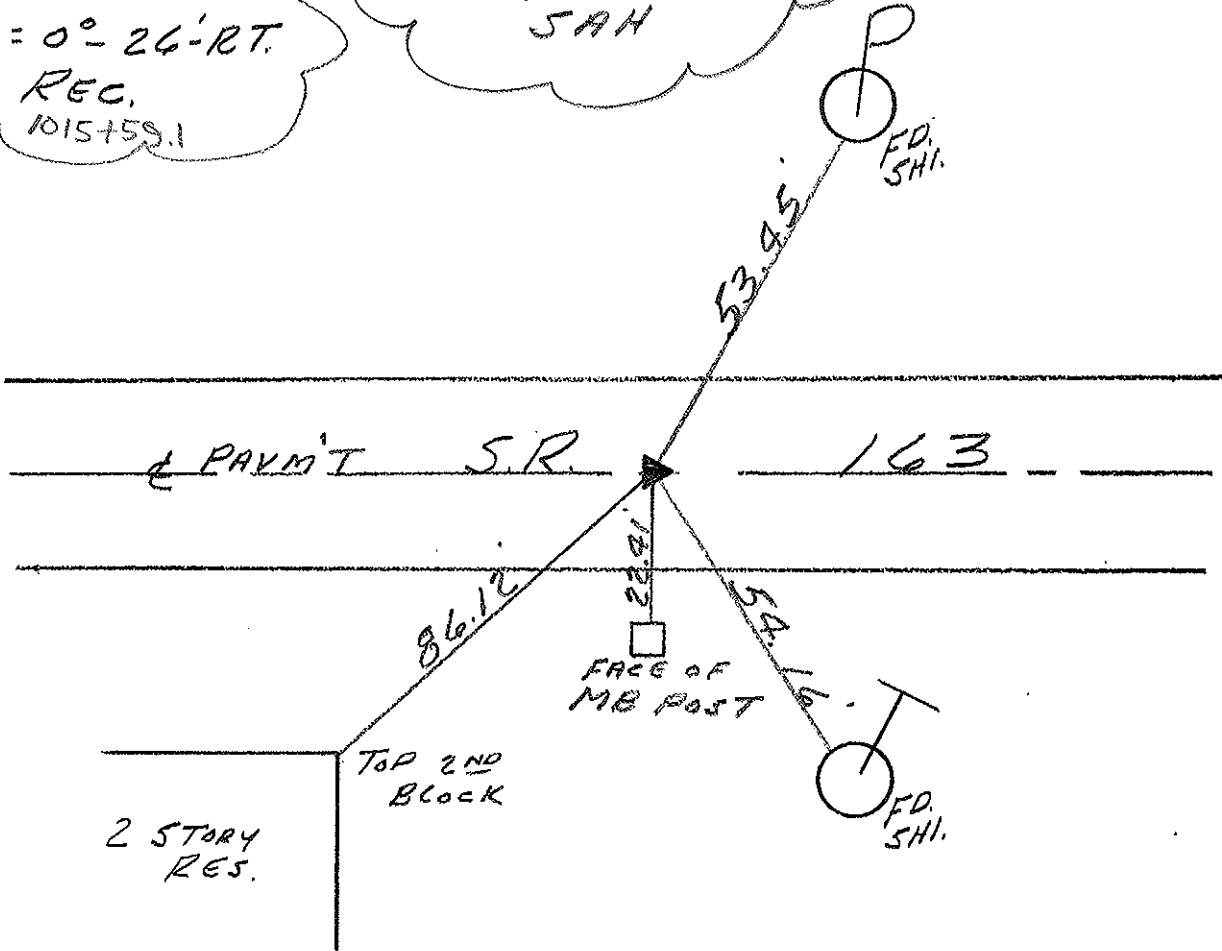
10.7 TO RT. EDGE PAVEMENT

S.L.M. 1071+73



P.I.  
 $\Delta = 0^\circ - 26' - RT.$   
 REC.  
 1015+59.1

SET PK & WASHER  
 6-7-01  
 JAH



O.D.O.T. DISTRICT 2 SURVEY OFFICE

PERSONNEL

REFERENCE NO. 102

SHEET 53 OF \_\_\_\_\_

NOTES RIPPLE

H.C. BARBOUR

R.C. GEYMAN

DATE 9/28/90 <sup>DRAWN</sup> 1/09/90

WEATHER cloudy

TEMP. 70°

ROUTE SR#163

COUNTY OTTAWA

TOWNSHIP ERIC

SECTION 33

T.T. N R 16 E

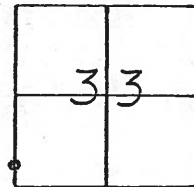
TYPE MONUMENT SET P.K. NAIL & WASHER

ON SURFACE - BELOW P.K. & WASHER

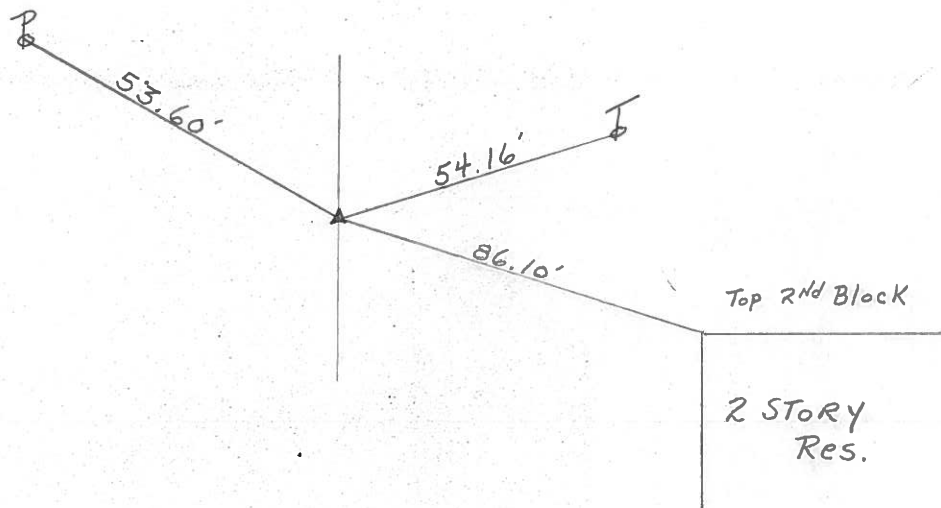
LEFT - & PAV'T. - RIGHT \_\_\_\_\_

TO \_\_\_\_\_ EDGE PAVEMENT

S.L.M. 1015 + 59.1



P.I.  
Δ = 0° 26' RT.



PERSONNEL	TITLE	PERSONNEL	TITLE	COUNTY	DATE
				Alameda	11/1/58
				S. R.	WEATHER
				SEC.	TEMP.
DESCRIPTION				JOB NO.	

LEFT	CENTER LINE	RIGHT
<p>P.T. 1054 + 64.24 Δ = 70' 00" N</p> <p>106</p>	<p>R 76.15</p>	<p>8.97' 6.5108' } B.P. 4 did not find 22.33' 9 out</p>
<p>1046 + 13</p> <p>105</p>	<p>SK. # 35 B North</p>	<p>8.15' 10.1108'</p>
<p>P.T. 1021 + 52.13 88' 21' 63' 14" of the cone Δ = 72' 57" N</p> <p>102</p>	<p>72.40'</p>	<p>71.95'</p>

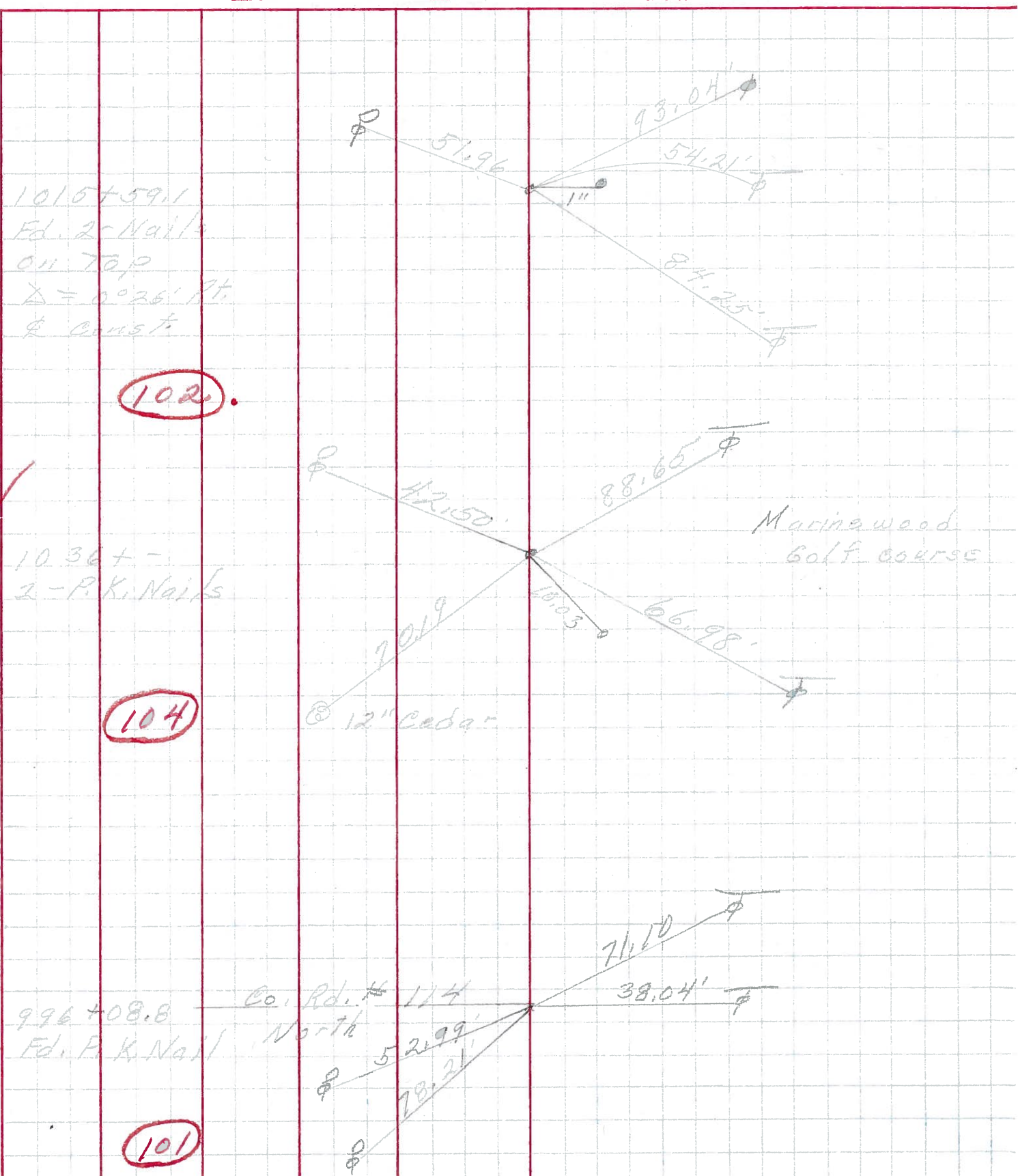
PERSONNEL TITLE PERSONNEL TITLE

COUNTY Ottawa DATE March 1972

S. R. 163 WEATHER

SEC. 5 TEMP.

DESCRIPTION Erie Twp. JOB NO.



102

104

101

Marina wood Golf course

Co. Rd. # 114 North

1015+59.1  
Ed. 2c Nail  
on Top  
Δ = 0°26' Pt.  
& Const.

10.36+-  
3-P.K. Nails

996+08.8  
Ed. P.K. Nail

