

O.D.O.T. DISTRICT 2 SURVEY OFFICE (USE ONLY)

PERSONNEL

REFERENCE NO. 104

SHEET 74 OF 74

NOTES POORE

DATE 7-28-17

ROUTE SR 163

H.C. LEU

WEATHER CLOUDY, WINDY

COUNTY OTTAWA

R.C. CARSON

TEMP. 73°

TOWNSHIP ERIE

SECTION 33

DWG BY JAMES

PID 95757

T 7 N R 16 E

TYPE MONUMENT P.K./WASHER

ON SURFACE - ~~BELOW~~ ON

OFFSET C PAVEMENT ON LT : RT

- TO - EDGE PAVEMENT

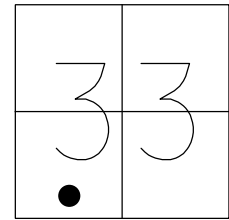
STATION: 1092+70

HORZ.DATUM: NAD83 2011

GEOID: NAVD88 2012A

GRID: NORTHING: 674702.488

EASTING: 1824957.508



RECORD:
 FD P.K./WASHER
 8-9-00, SAH
 SET P.K./WASHER
 6-7-01, SAH
 FD P.K./WASHER
 REF104
 5-5-16, DCH
 7-28-17, JLL
 SET MAG/WASHER
 1-17-19, JLL

SET SHI
TWIN CEDAR

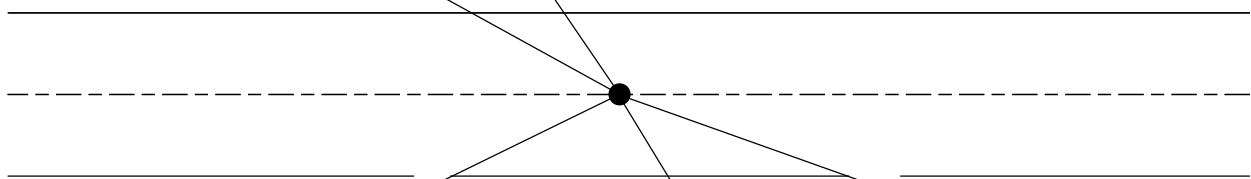


FD
SHI



97.66'

41.67'



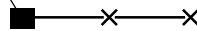
SET SHI
MB POST



46.62'

41.72'

FD
SHI



88.71'

FD
SHI



GOLF COURSE

O.D.O.T. DISTRICT 2 SURVEY OFFICE

PERSONNEL

REFERENCE NO. 104

SHEET 63 OF 63

NOTES Huss

H.C. Condes

R.C. Karger

DATE 8-9-00

WEATHER Cldy-Fair

TEMP. 79°F

ROUTE SR-163

COUNTY Ottawa

TOWNSHIP Evie

SECTION 33

T 7 N R 16 E

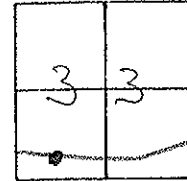
TYPE MONUMENT PK/w

ON SURFACE ~~BELOW~~ Surf.

~~LEFT~~ C. PAV'T. ~~RIGHT~~ R

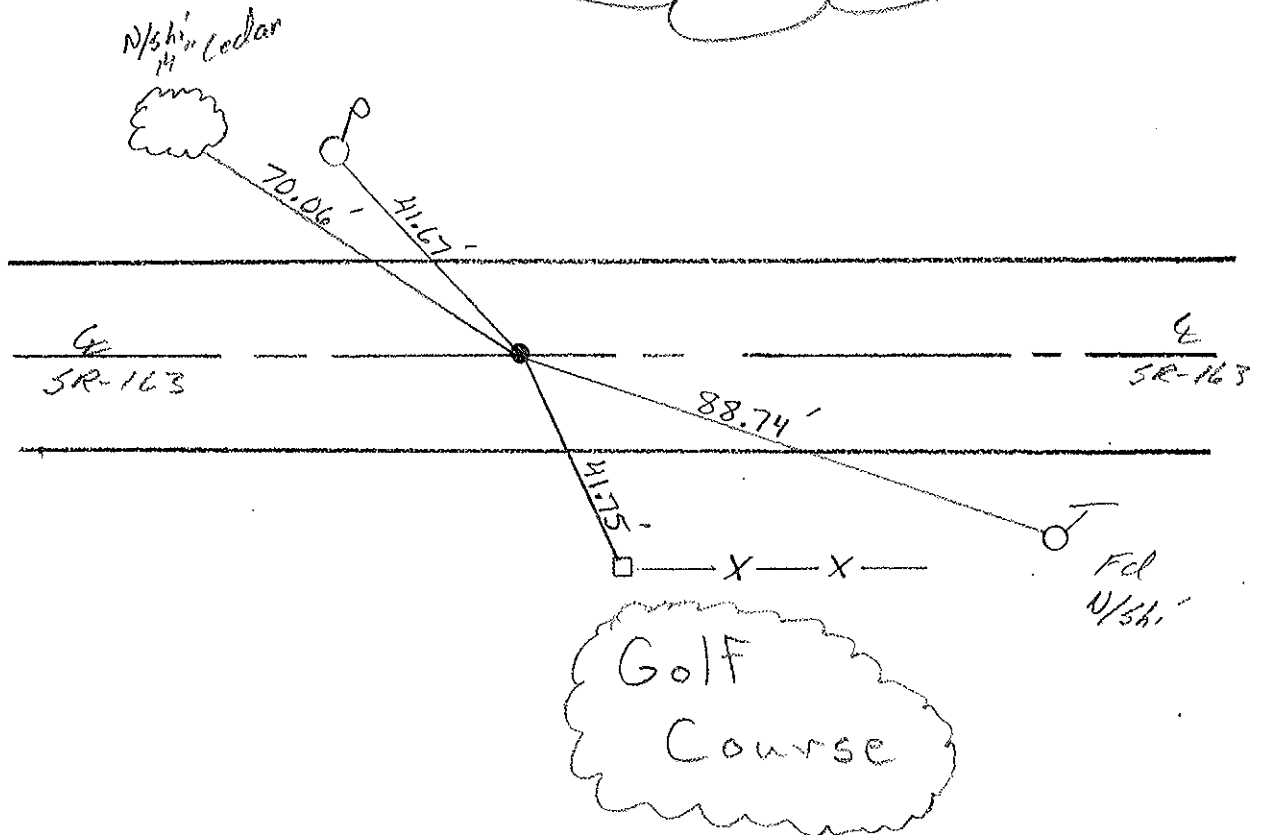
TO EDGE PAVEMENT

S.L.M. 1092+70



Revised:
1030+

SET PK & WASHER
6-7-01
SAH



Golf
Course

O.D.O.T. DISTRICT 2 SURVEY OFFICE

PERSONNEL

REFERENCE NO. 103

SHEET 55 OF

NOTES RIPPLE

H.C. BARBOUR

DATE 9/28/90 ^{DRAWN} 1/09/91

ROUTE SR#163

R.C. Geyman

WEATHER Cloudy

COUNTY OTTAWA

TEMP. 70°

TOWNSHIP Erie

SECTION 33

T.7 N R.16 E

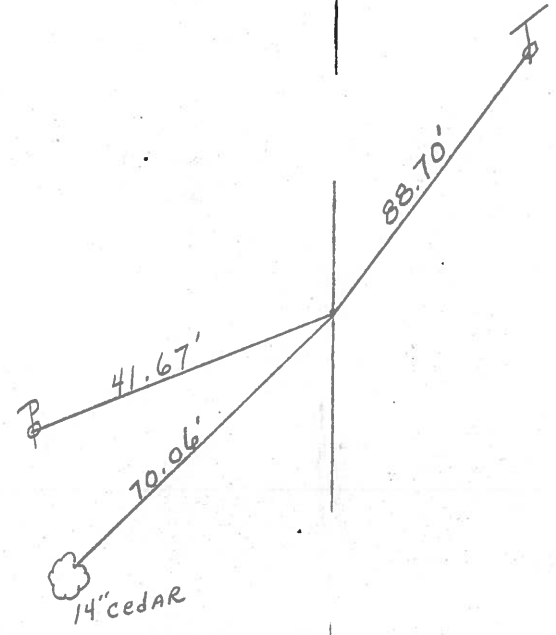
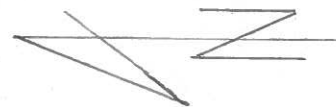
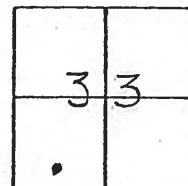
TYPE MONUMENT Set P.K. Nail & Washer

ON SURFACE - BELOW P.K. Nail

LEFT-☉ PAV'T. - RIGHT & PAVM'T.

 TO EDGE PAVEMENT

S.L.M. 1036+ -



MARINE Wood
Golf Course

PERSONNEL	TITLE	PERSONNEL	TITLE	COUNTY	DATE
				<u>Ottawa</u>	<u>March 1972</u>
				S. R. <u>163</u>	WEATHER
				SEC. <u>5</u>	TEMP.
DESCRIPTION <u>Erie Twp.</u>				JOB NO.	
LEFT		CENTER LINE		RIGHT	

1015+59.1
 Ed. 2-Nails
 on top
 $\Delta = 0.026'$ Pt.
 & Const.

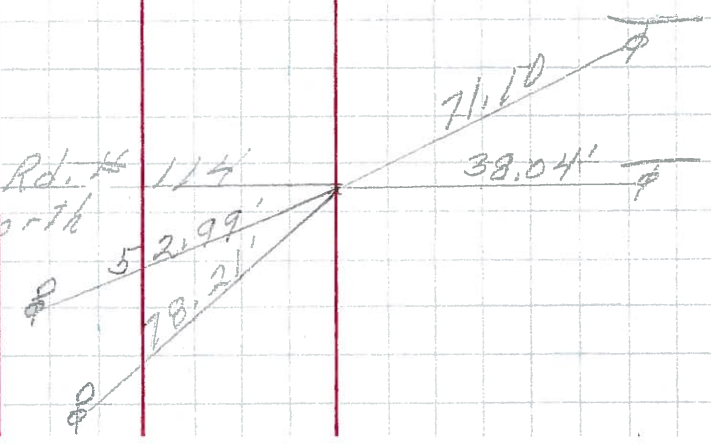
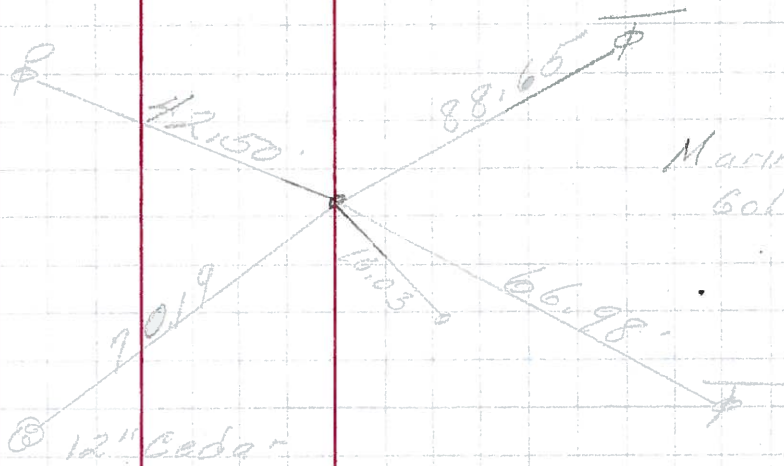
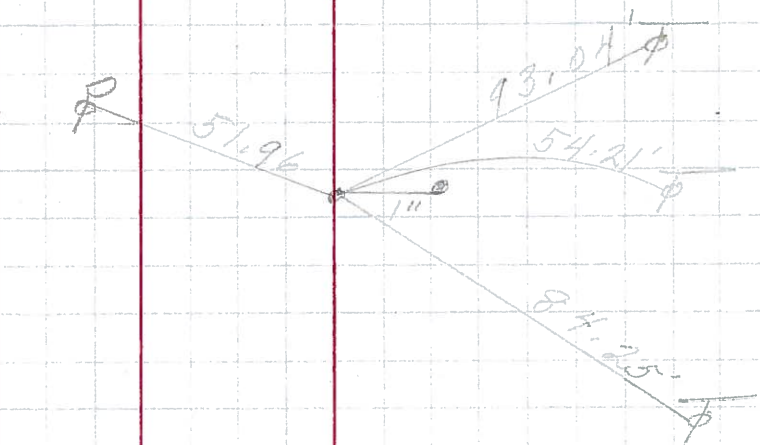
102

10.36+ -
 2-P.K. Nails

104

996+08.8
 Ed. P.K. Nail

101



PERSONNEL	TITLE	PERSONNEL	TITLE	COUNTY	DATE
Schneider		Potts		Ottawa	9-3-68
Mosser				S. R. 163	WEATHER Fair
Barbour				SEC. Oak Harbor - East	TEMP. 75°
Redding					

DESCRIPTION Ties for Control Points JOB NO. _____

