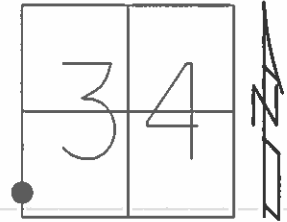


O.D.O.T. DISTRICT 2 SURVEY OFFICE (USE ONLY)

PERSONNEL \_\_\_\_\_ REFERENCE NO. 108 SHEET 1 OF 14  
 NOTES CANTERBURY DATE 6/16/09 ROUTE SR 163  
 H.C. HUSS WEATHER FAIR COUNTY OTTAWA  
 R.C. CANTERBURY TEMP. 75° TOWNSHIP ERIE  
 \_\_\_\_\_ SECTION 34  
 \_\_\_\_\_ T 7 N R 16 E

TYPE MONUMENT MAG/WASHER  
 ON SURFACE - ~~BELOW~~ ON  
 LEFT - ☉ PAV'T - ~~RIGHT~~ 5.2'  
5.6' TO LT EDGE PAVEMENT  
 S.L.M. 1124+18



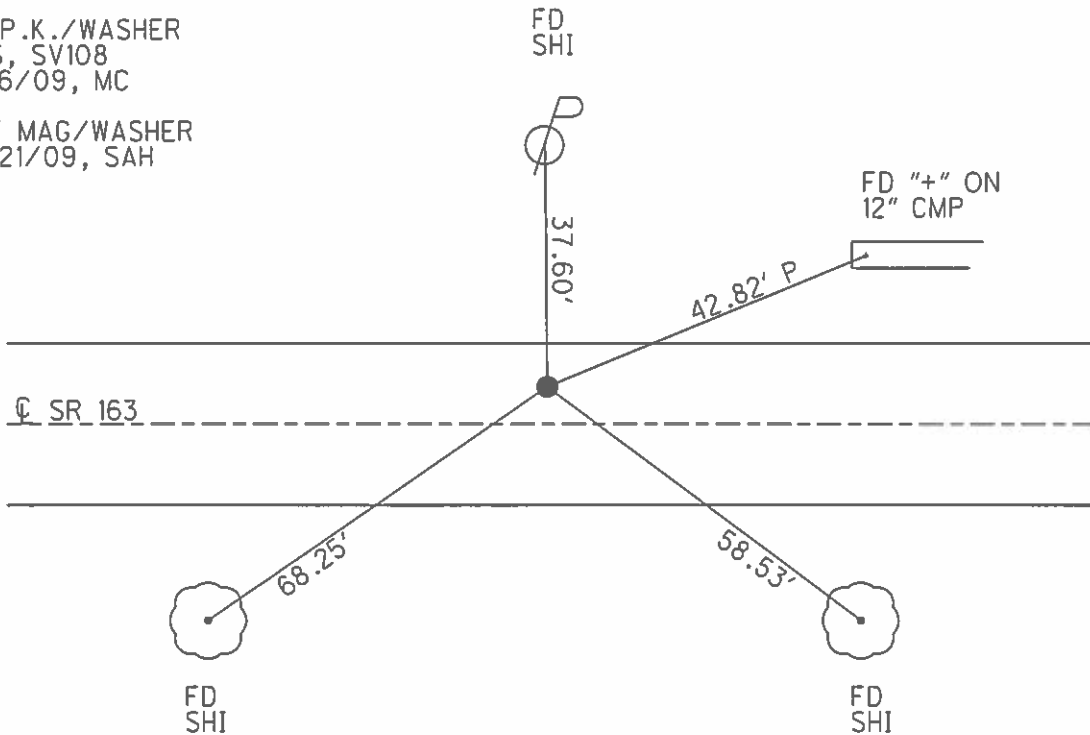
GRID: NORTHING: 674767.549 EASTING: 1828230.517

RECORD:  
 STA. 133+33 PLAN  
 FD P.K./WASHER  
 9/2/95, MC  
 OVER BOAT SPIKE  
 OVER R.R.SPIKE

SET P.K./WASHER  
 6/8/96

FD P.K./WASHER  
 GPS, SV108  
 6/16/09, MC

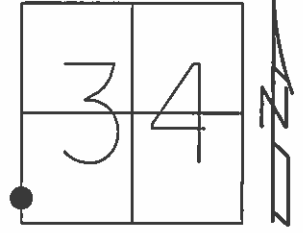
SET MAG/WASHER  
 10/21/09, SAH



O.D.O.T. DISTRICT 2 SURVEY OFFICE (USE ONLY)

PERSONNEL \_\_\_\_\_ REFERENCE NO. 108 SHEET 1 OF 14  
 NOTES CANTERBURY DATE 6/16/09 ROUTE SR 163  
 H.C. HUSS WEATHER FAIR COUNTY OTTAWA  
 R.C. CANTERBURY TEMP. 75° TOWNSHIP ERIE  
 \_\_\_\_\_ SECTION 34  
 \_\_\_\_\_ T 7 N R 16 E

TYPE MONUMENT MAG/WASHER  
 ON SURFACE - ~~BELOW~~ ON  
 LEFT - ☉ PAV'T - ~~RIGHT~~ 5.2'  
5.6' TO LT EDGE PAVEMENT  
 S.L.M. 1124+18, (133+33 PLAN)  
 Grid: Northing: 674767.549 Easting: 1828230.517

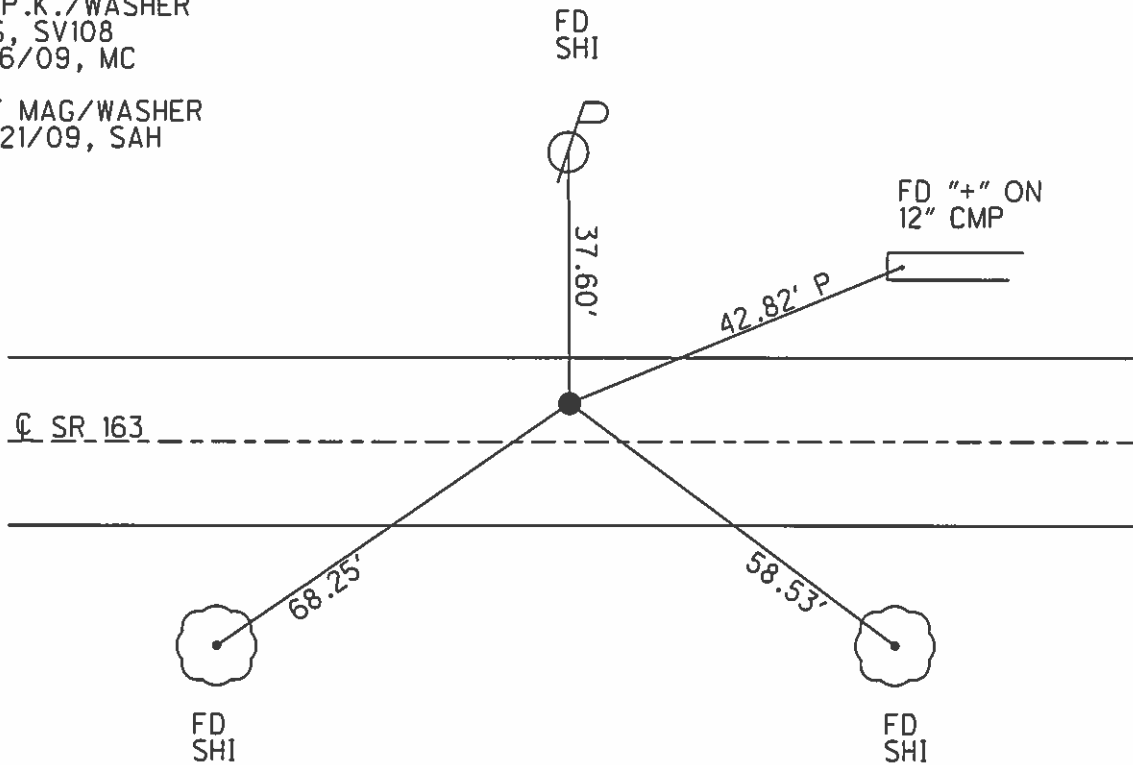


RECORD:  
 FD P.K./WASHER  
 9/2/95, MC  
 OVER BOAT SPIKE  
 OVER R.R.SPIKE

SET P.K./WASHER  
 6/8/96

FD P.K./WASHER  
 GPS, SV108  
 6/16/09, MC

SET MAG/WASHER  
 10/21/09, SAH



# O.D.O.T. DISTRICT 2 SURVEY OFFICE

PERSONNEL \_\_\_\_\_

REFERENCE NO. 108

SHEET 1 OF 16

NOTES Rousos

H.C. SLOVAK

R.C. CANTERBURY

DATE 9-2-95

WEATHER FAIR

TEMP. +85°F

ROUTE S.R. 163

COUNTY OTTAWA

TOWNSHIP ERIE

SECTION 34

T 7 N R 16 E

*Set P.K./WASHER 6-18-96*

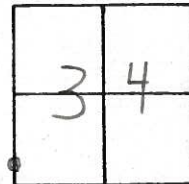
TYPE MONUMENT PK/WASHER ATOP BOAT SPIKE ATOP RR. SPIKE

ON SURFACE - BELOW YES ON SURFACE

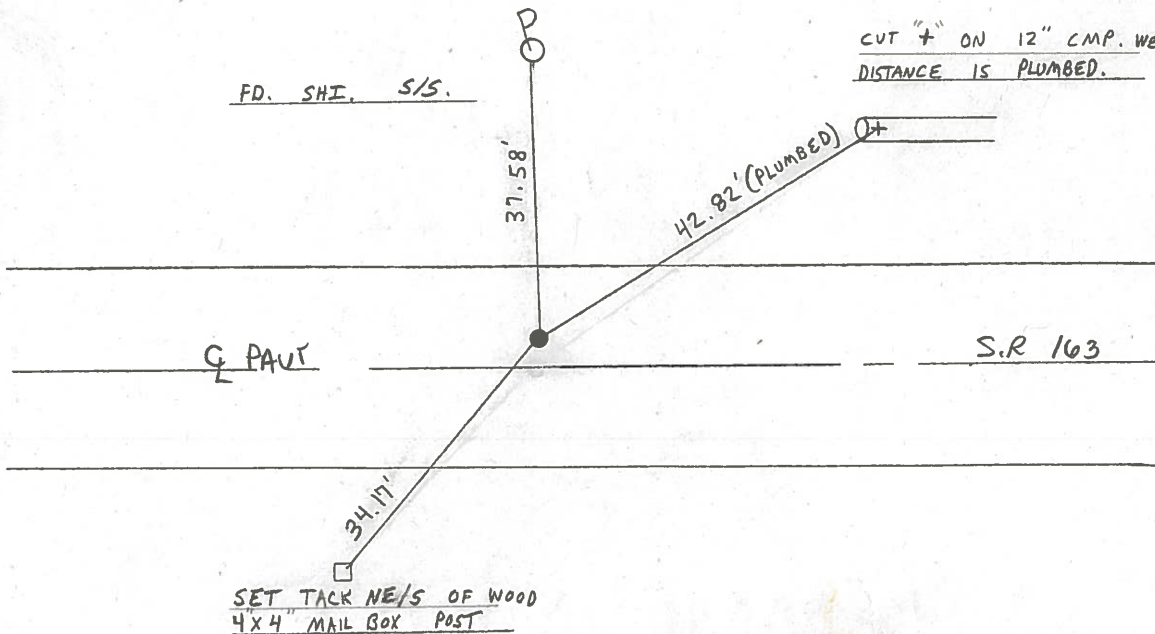
LEFT- & PAV'T. - RIGHT 4.7' LT &

G.4 TO LT EDGE PAVEMENT

S.L.M. 1124 + 18



*Per ? 1069 + 37.55*



Resurfaced 1996

O.D.O.T. DISTRICT 2 SURVEY OFFICE

④

PERSONNEL

REFERENCE NO. 108

SHEET \_\_\_ OF \_\_\_

NOTES CROWIN

H.C. RIPPLE

R.C. BARBOUR

GEYMAN

DATE 9/11/85

WEATHER SUNNY

TEMP. 60°

ROUTE #163

COUNTY OTTAWA

TOWNSHIP ERIE

SECTION \_\_\_\_\_

T 7 N R 16 E

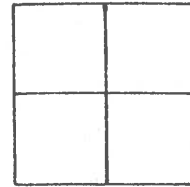
TYPE MONUMENT P.K. WASHER ATOP BOAT SPIKE

ON SURFACE - BELOW WASHER ATOP R.R. SPIKE

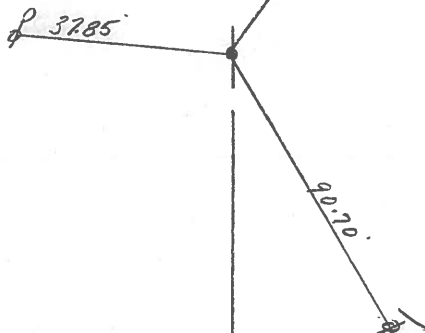
LEFT - PAV'T. - RIGHT 5' L. & PAV'T.

TO \_\_\_\_\_ EDGE PAVEMENT

S.L.M. \_\_\_\_\_



1124+49?



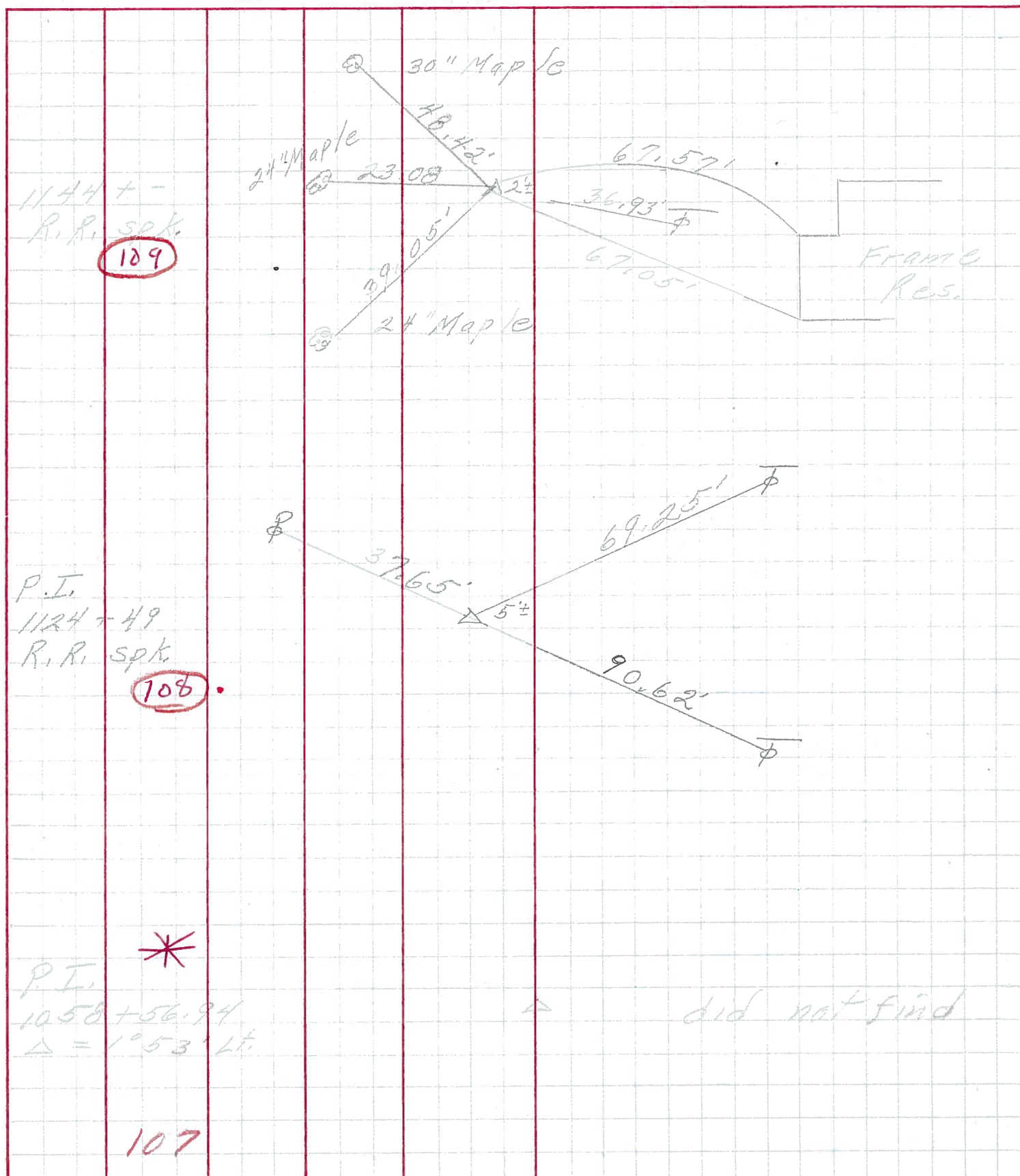
PERSONNEL TITLE PERSONNEL TITLE

COUNTY Ottawa DATE 5-8-69

S. R. 163 WEATHER Cloudy-windy

SEC. 33 TEMP. 60°

DESCRIPTION Erie Twp. LEFT CENTER LINE RIGHT JOB NO.





| PERSONNEL                           | TITLE | PERSONNEL   | TITLE | COUNTY                 | DATE         |
|-------------------------------------|-------|-------------|-------|------------------------|--------------|
| Schneider                           |       | Potts       |       | Ottawa                 | 9-3-68       |
| Mosser                              |       |             |       | S. R. 163              | WEATHER Fair |
| Barbour                             |       |             |       | SEC. Oak Harbor - East | TEMP. 80°    |
| Redding                             |       |             |       |                        |              |
| DESCRIPTION Ties for Control Points |       |             |       | JOB NO.                |              |
|                                     | LEFT  | CENTER LINE | RIGHT |                        |              |

