

O.D.O.T. DISTRICT 2 SURVEY OFFICE (13)

PERSONNEL

REFERENCE NO. 117

SHEET ___ OF ___

NOTES CRONIN

H.C. RIPPLE

R.C. BARBOUR

GEYMAN

DATE 9/12/85

WEATHER SUNNY-WINDY

TEMP. 58°

ROUTE #103

COUNTY OTAWA

TOWNSHIP ERIE

SECTION 34

T7 N R 16 E

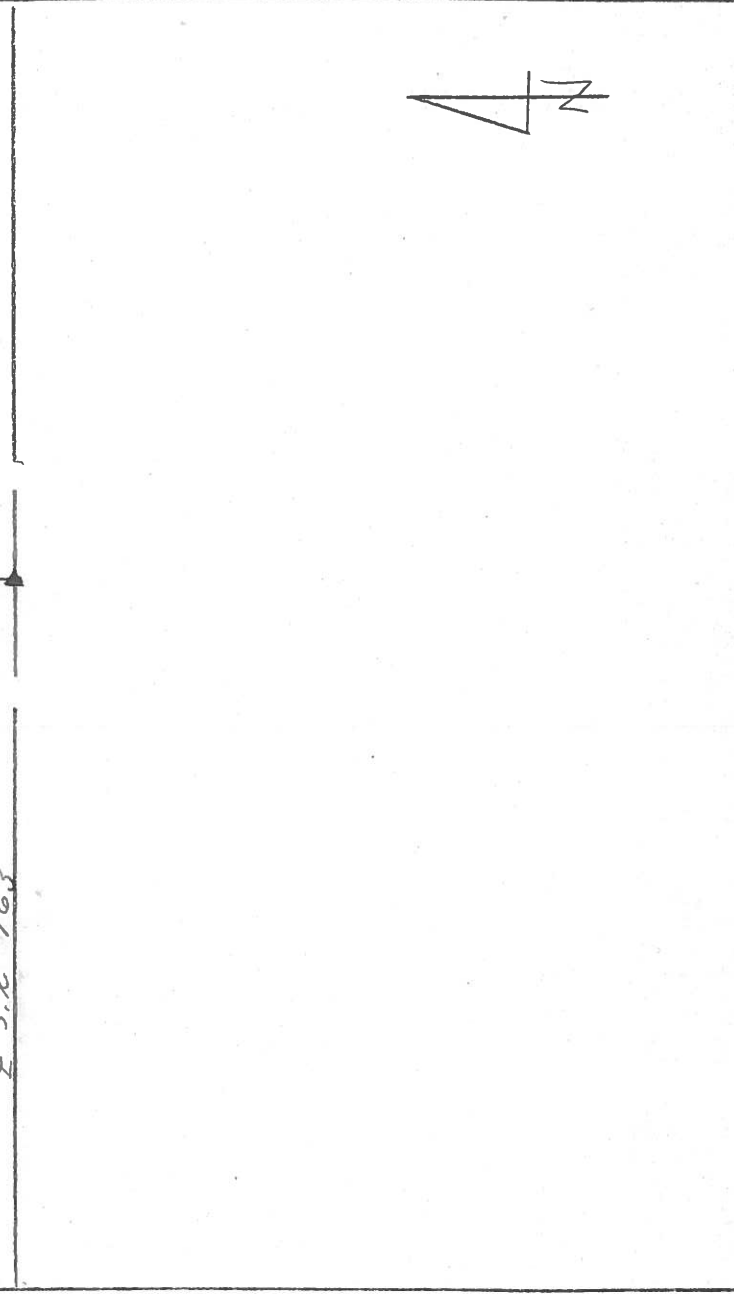
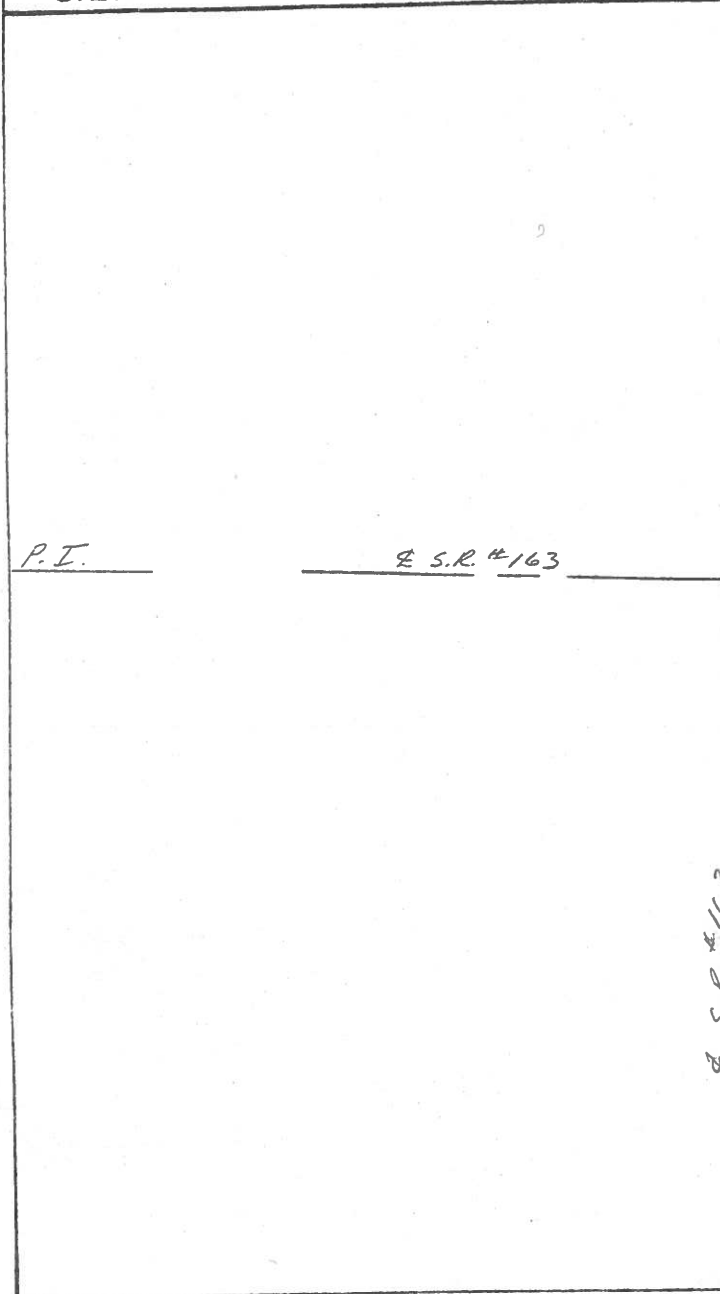
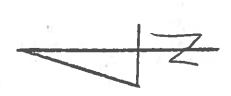
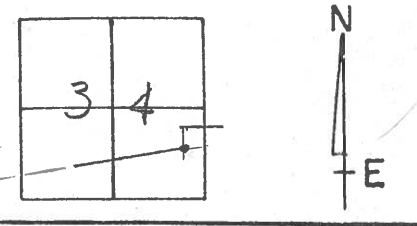
TYPE MONUMENT ?

ON SURFACE - BELOW

LEFT - ☉ PAV'T. - RIGHT OFF PAV'T.

TO EDGE PAVEMENT

S.L.M. _____



PERSONNEL TITLE PERSONNEL TITLE

COUNTY Ottawa DATE 6-11-69

S. R. 163 WEATHER cloudy-windy

SEC. 35 TEMP. 60°

DESCRIPTION Erie Twp. JOB NO. _____

LEFT CENTER LINE RIGHT

