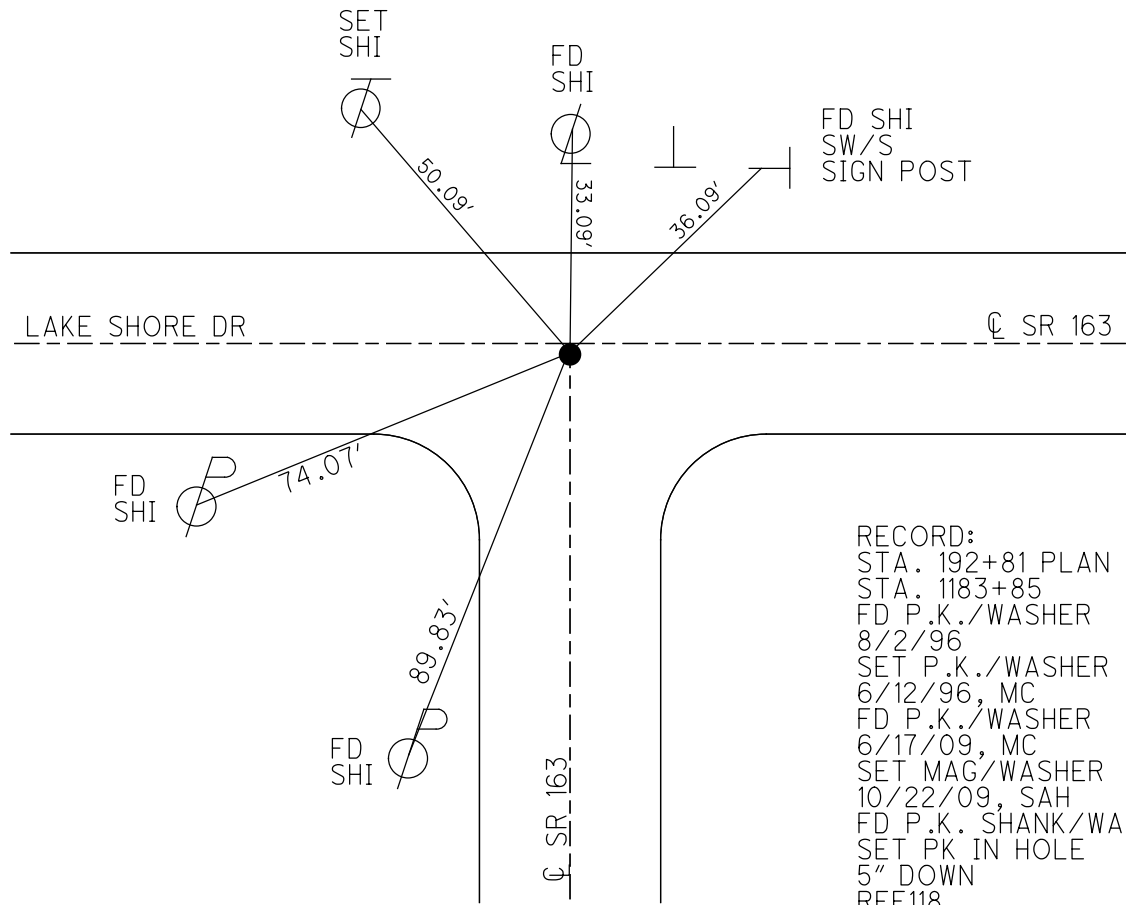
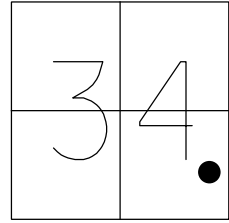


O.D.O.T. DISTRICT 2 SURVEY OFFICE (USE ONLY)

PERSONNEL _____ REFERENCE NO. 118 SHEET 12 OF 14
 NOTES O'DONNELL DATE 6/18/2020 ROUTE SR 163
 H.C. O'DONNELL WEATHER SUNNY COUNTY OTTAWA
 R.C. MAHLER TEMP. 76 F TOWNSHIP ERIE
 _____ SECTION 34
 DWG BY GARRETT PID NO PID T 7 N R 16 E

TYPE MONUMENT P.K./WASHER
 ON SURFACE - ~~BELOW~~ ON
 OFFSET C PAVEMENT 0.7' ~~±~~ : RT
23.1' TO RT EDGE PAVEMENT
 STATION: 1183+85

HORZ.DATUM: NAD83 (2011) GEOID: 2018
 GRID: NORTHING: 675916.923 EASTING: 1833585.297

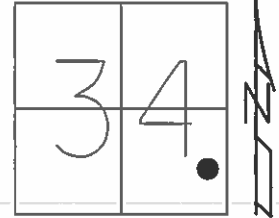


RECORD:
 STA. 192+81 PLAN
 STA. 1183+85
 FD P.K./WASHER
 8/2/96
 SET P.K./WASHER
 6/12/96, MC
 FD P.K./WASHER
 6/17/09, MC
 SET MAG/WASHER
 10/22/09, SAH
 FD P.K. SHANK/WASHER
 SET PK IN HOLE
 5" DOWN
 REF118
 6/18/20, JFO

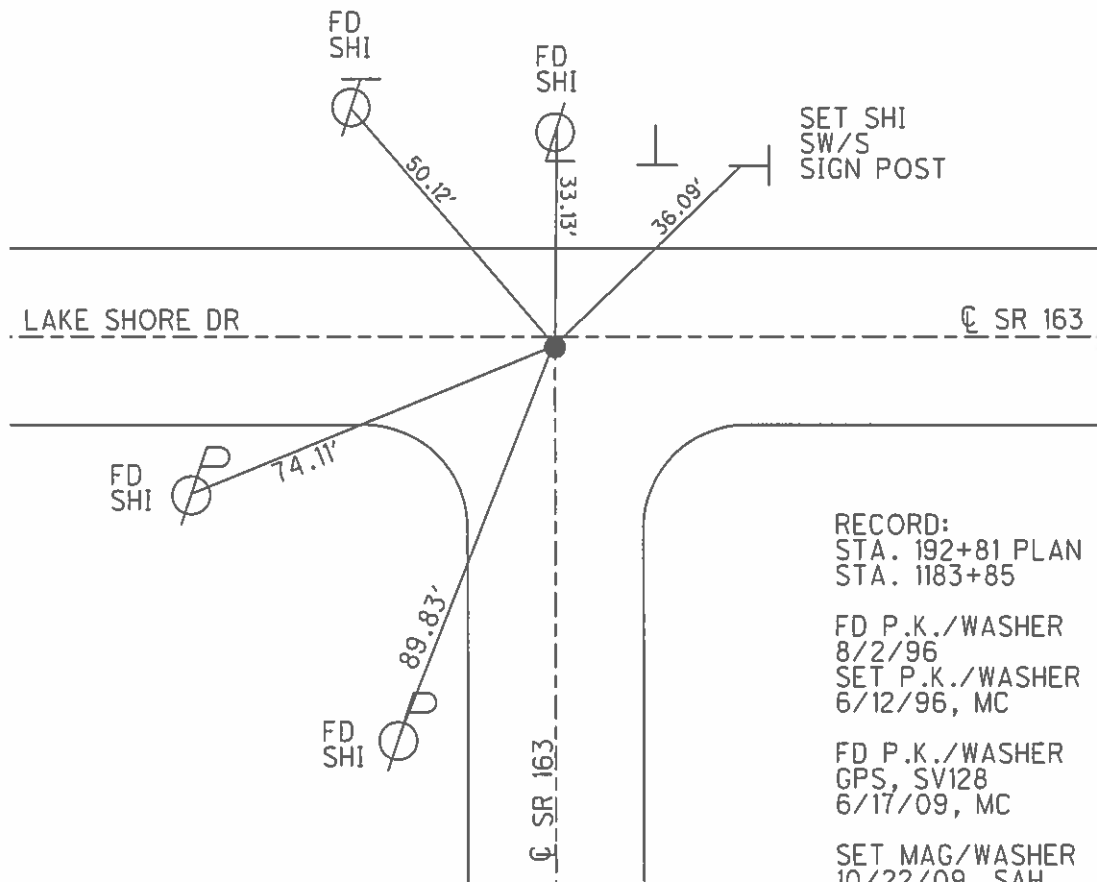
O.D.O.T. DISTRICT 2 SURVEY OFFICE (USE ONLY)

PERSONNEL _____ REFERENCE NO. 118 SHEET 12 OF 14
 NOTES CANTERBURY DATE 6/17/09 ROUTE SR 163
 H.C. HUSS WEATHER OVERCAST COUNTY OTTAWA
 R.C. CANTERBURY TEMP. 78° TOWNSHIP ERIE
 _____ SECTION 34
 _____ T 7 N R 16 E

TYPE MONUMENT P.K./WASHER
 ON SURFACE - ~~BELOW~~ ON
~~LEFT~~ - Q PAV'T - RIGHT 0.7'
23.1' TO RT EDGE PAVEMENT
 S.L.M. 1183+85



GRID: NORTHING: 675916.905 EASTING: 1833585.221



RECORD:
 STA. 192+81 PLAN
 STA. 1183+85

 FD P.K./WASHER
 8/2/96
 SET P.K./WASHER
 6/12/96, MC

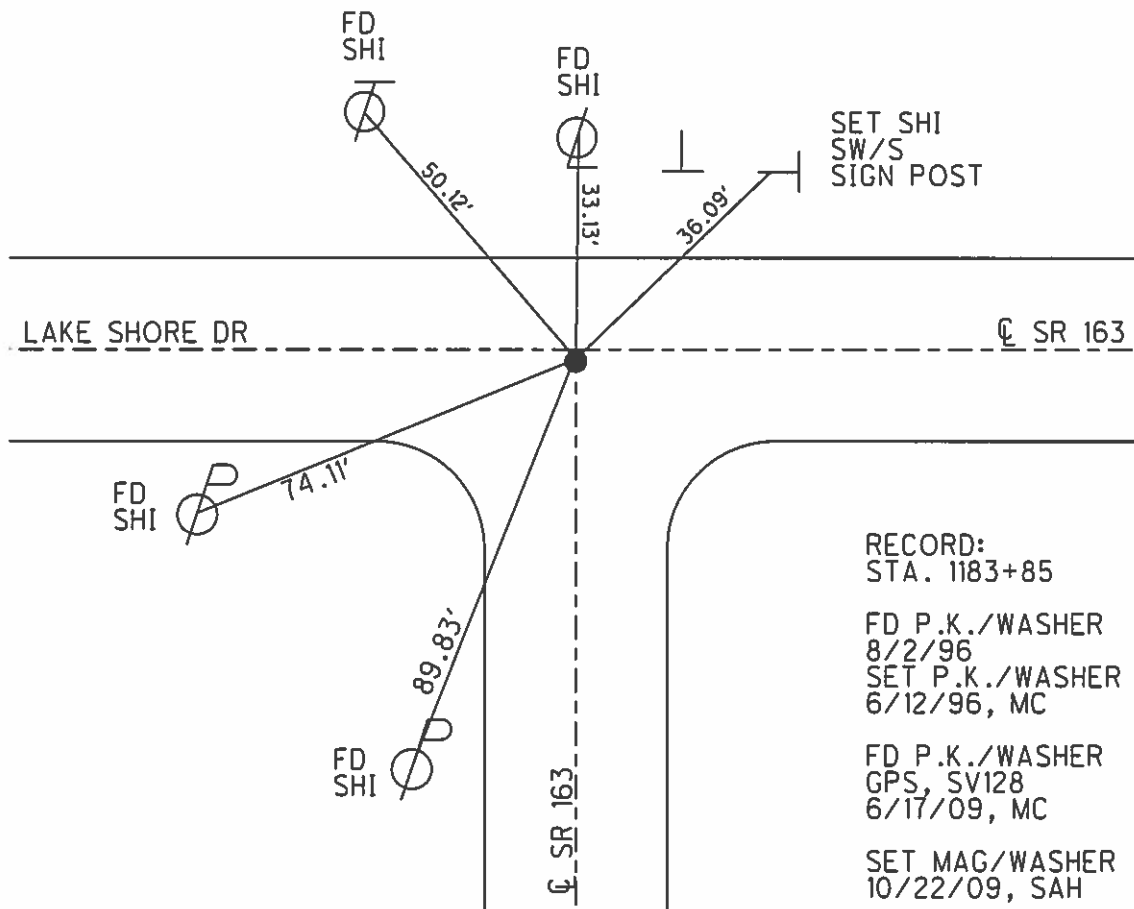
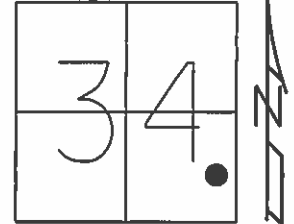
 FD P.K./WASHER
 GPS, SV128
 6/17/09, MC

 SET MAG/WASHER
 10/22/09, SAH

O.D.O.T. DISTRICT 2 SURVEY OFFICE (USE ONLY)

PERSONNEL _____ REFERENCE NO. 118 SHEET 12 OF 14
 NOTES CANTERBURY DATE 6/17/09 ROUTE SR 163
 H.C. HUSS WEATHER OVERCAST COUNTY OTTAWA
 R.C. CANTERBURY TEMP. 78° TOWNSHIP ERIE
 _____ SECTION 34
 _____ T 7 N R 16 E

TYPE MONUMENT P.K./WASHER
 ON SURFACE - ~~BELOW~~ ON
~~LEFT~~ - CL PAV'T - RIGHT 0.7'
23.1' TO RT EDGE PAVEMENT
 S.L.M. 1183+85, (192+81 PLAN)
 Grid: Northing: 675916.905 Easting: 1833585.221



O.D.O.T. DISTRICT 2 SURVEY OFFICE

PERSONNEL _____

REFERENCE NO. 118

SHEET 11 OF 16

NOTES Rowson

H.C. SLAVAK

DATE B-2-96

ROUTE S.R. 163

R.C. CANTERBURY

WEATHER Hot

COUNTY OTTAWA

TEMP. +89

TOWNSHIP ERIE

SECTION 34

Reset 6-12-96

T 7 N R 16 E

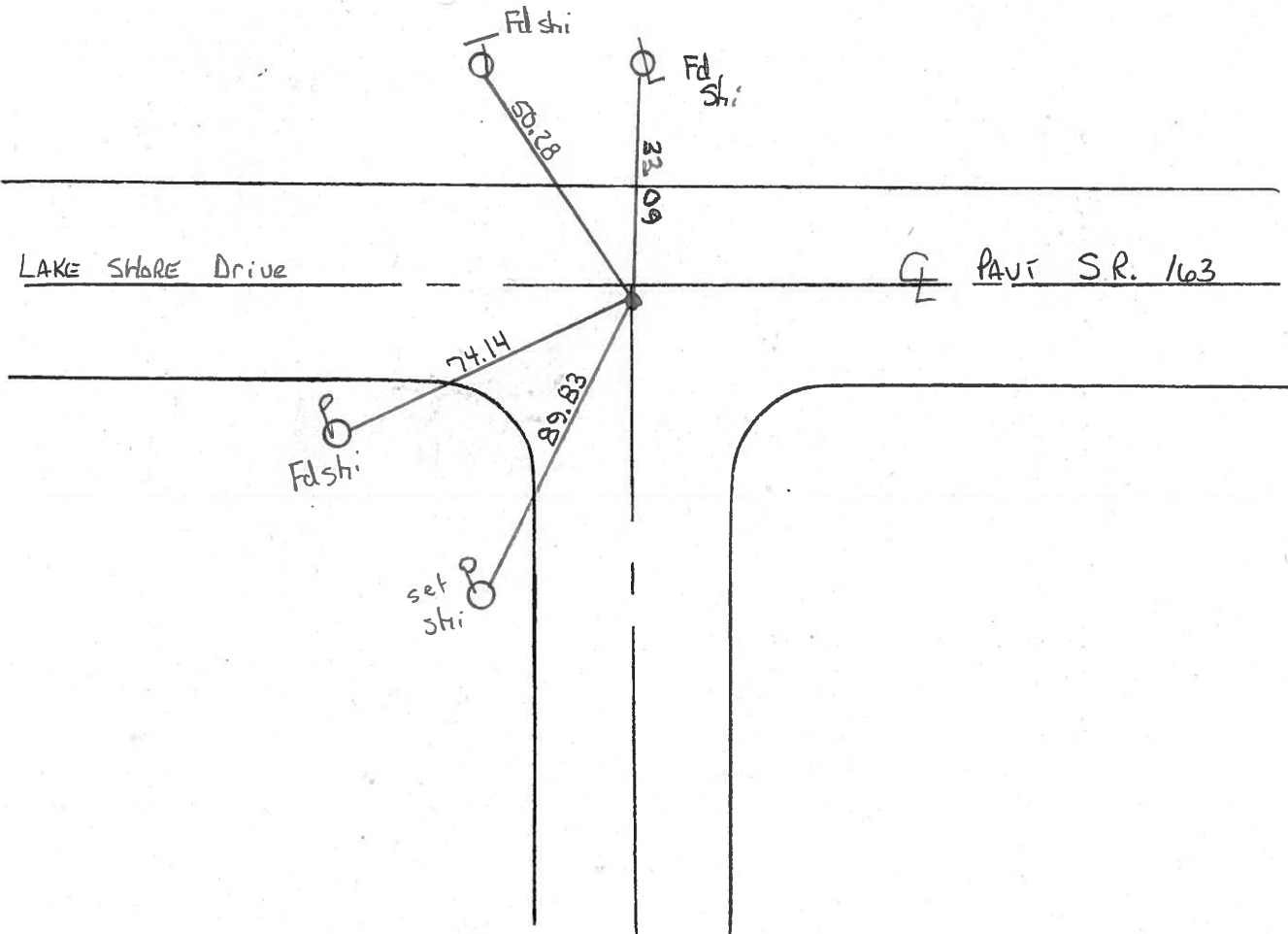
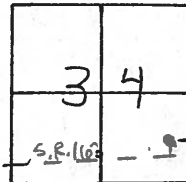
TYPE MONUMENT P.K./WASHER

~~ON~~ SURFACE - BELOW 2" Below

~~LEFT~~ - C PAV'T. - RIGHT 2' Rt

23.170 Rt EDGE PAVEMENT

S.L.M. 1183+85



O.D.O.T. DISTRICT 2 SURVEY OFFICE

(17)

PERSONNEL

REFERENCE NO. 118

SHEET _____ OF _____

NOTES CRONIN

H.C. RIPPLE

R.C. BARBOUR

GEYMAN

DATE 9/12/85

WEATHER SUNNY-WINDY

TEMP. 58

ROUTE #163

COUNTY OTTAWA

TOWNSHIP ERIE

SECTION 34

T 7 N R 16 E

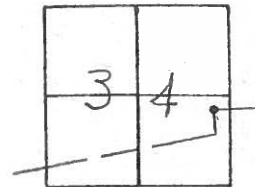
TYPE MONUMENT P.K. & WASHER

ON SURFACE - BELOW 2" BELOW SURFACE

LEFT - PAV'T. - RIGHT 2' RT. & PAUT

TO EDGE PAVEMENT

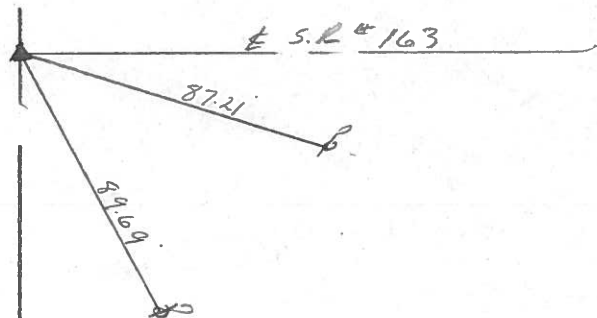
S.L.M. _____



E.S.R. #163

P.I.

E.S.R. #163



ODOT. DISTRICT 2 SURVEY OFFICE

Sht. 1 of 8

County Ottawa S.R. # 163

Date 6/25/80

Township ERIE

Weather sunny

Section S.E. 1/4 Sec. 34

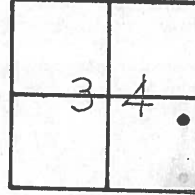
Temp. 83°

T7N, R16E

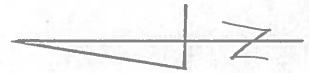
Personnel Cronin Schneider

Ripple Mosser

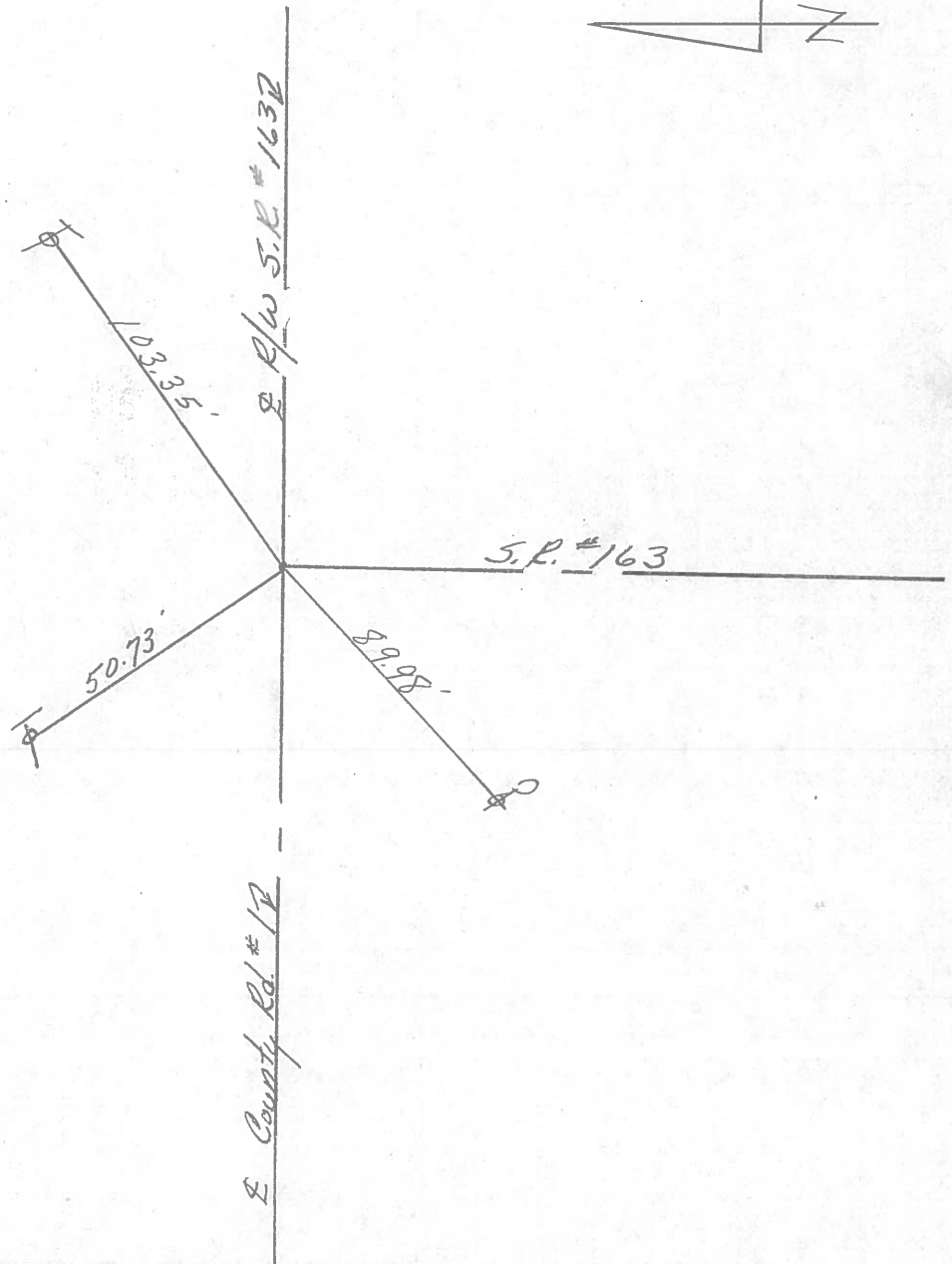
Ceyman Barbour



118



Fd. P.K. & washer on surface



PERSONNEL TITLE PERSONNEL TITLE

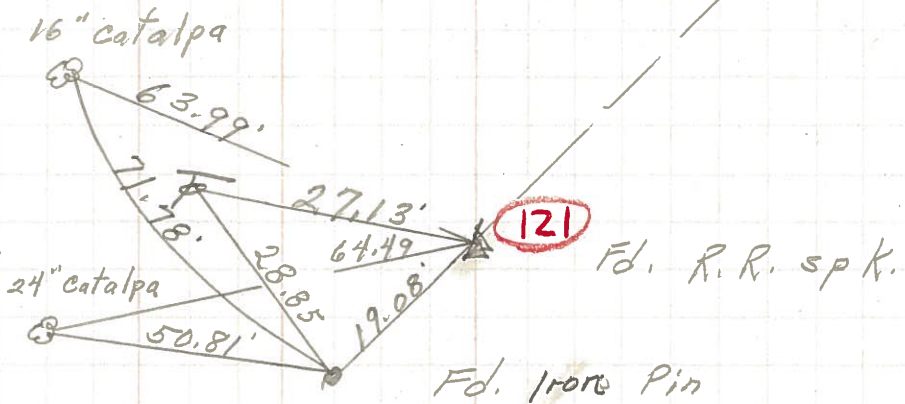
COUNTY DATE 3-27-72

S. R. 163 WEATHER Fair

SEC. 35 TEMP. 40'

DESCRIPTION Erie Twp. LEFT CENTER LINE RIGHT JOB NO.

P.I.
170+71.70
 $\Delta = 31^\circ 53' \text{ Rt.}$
121



P.I.
154+03.3
120

Δ did not find

P.O.T.
120+30.2
Iron pin
119

did not find

Old S.R. # 163

Found
Nail & shiner
2" down
118

