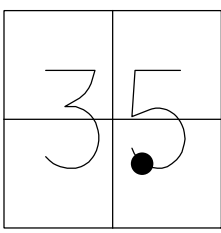


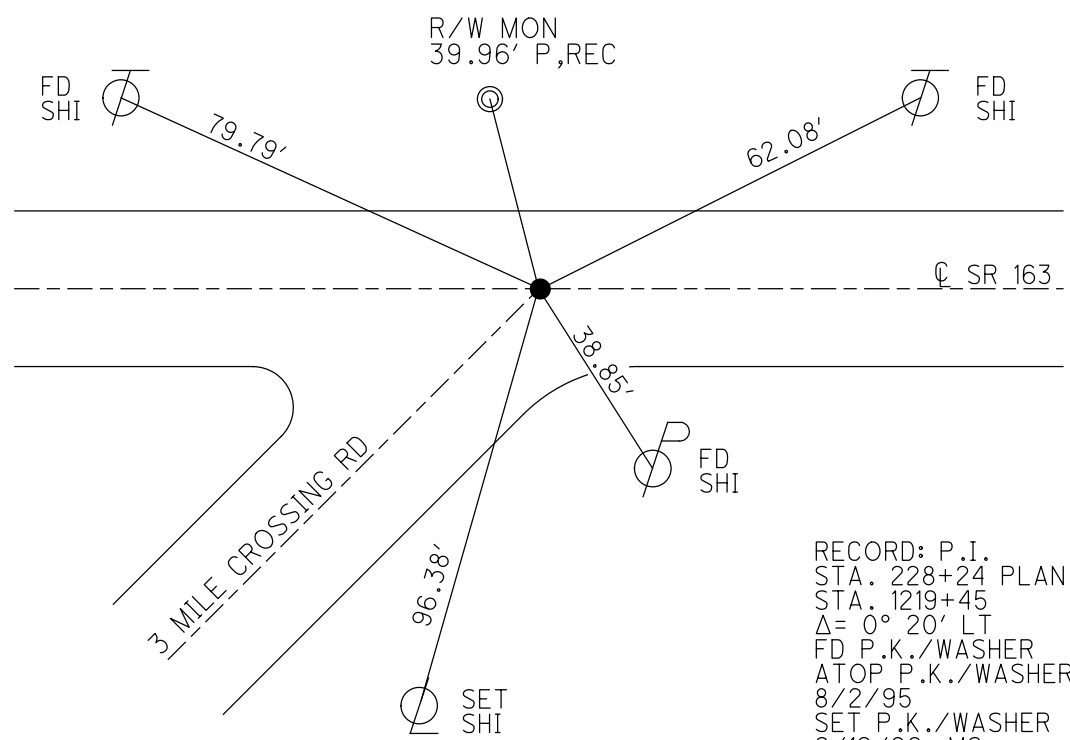
O.D.O.T. DISTRICT 2 SURVEY OFFICE (USE ONLY)

PERSONNEL _____ REFERENCE NO. 119 SHEET 13 OF 14
 NOTES CANTERBURY DATE 6/17/09 ROUTE SR 163
 H.C. HUSS WEATHER CLOUDY COUNTY OTTAWA
 R.C. CANTERBURY TEMP. 78 F TOWNSHIP ERIE
 DWG BY GARRETT PID NO PID SECTION 35
 T 7 N R 16 E

TYPE MONUMENT P.K./WASHER
 ON SURFACE - ~~BELOW~~ ON
 OFFSET ☐ PAVEMENT ON LT : RT
20.8' TO LT EDGE PAVEMENT
 STATION: 1219+45



HORZ.DATUM: NAD83 (2011) GEOID: 2018
 GRID: NORTHING: 675916.267 EASTING: 1837128.137



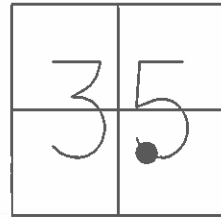
RECORD: P.I.
 STA. 228+24 PLAN
 STA. 1219+45
 Δ= 0° 20' LT
 FD P.K./WASHER
 ATOP P.K./WASHER
 8/2/95
 SET P.K./WASHER
 6/12/96, MC
 FD P.K./WASHER
 GPS, SV129
 6/17/09, MC
 SET MAG/WASHER
 10/22/09, SAH
 FD MAG
 REF 119
 6/18/2020, JFO

O.D.O.T. DISTRICT 2 SURVEY OFFICE (USE ONLY)

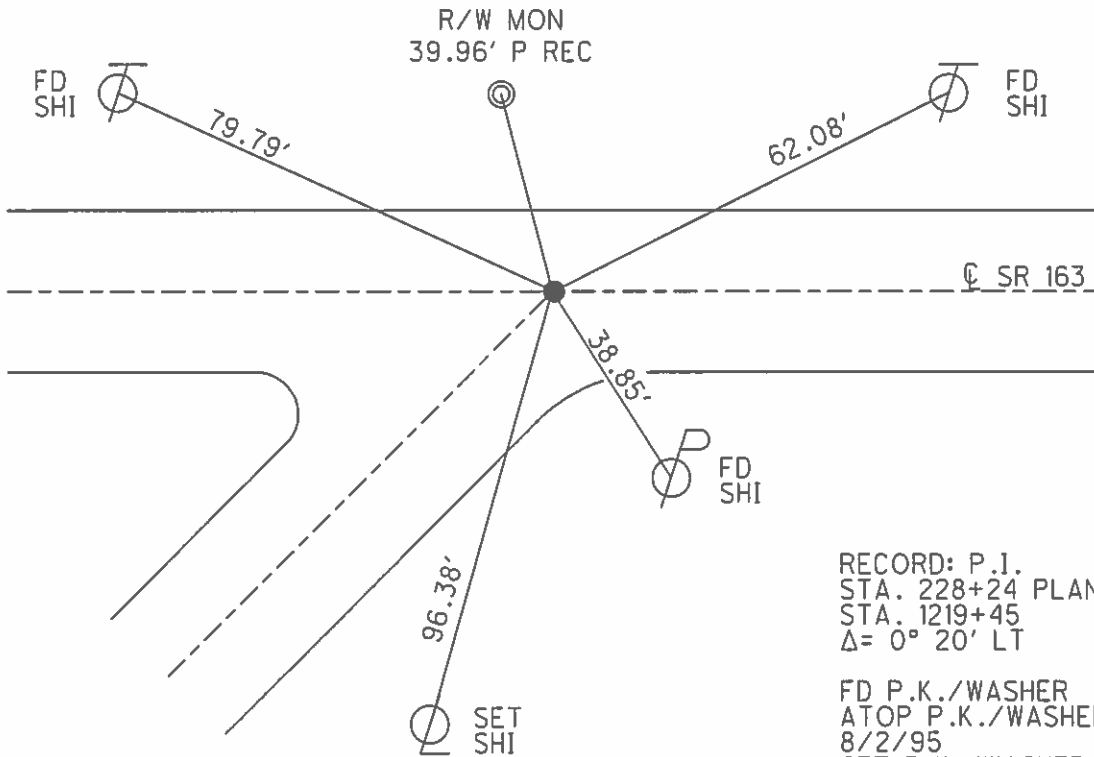
PERSONNEL _____ REFERENCE NO. 119 SHEET 13 OF 14

NOTES CANTERBURY DATE 6/17/09 ROUTE SR 163
 H.C. HUSS WEATHER CLOUDY COUNTY OTTAWA
 R.C. CANTERBURY TEMP. 78° TOWNSHIP ERIE
 SECTION 35
 T 7 N R 16 E

TYPE MONUMENT P.K./WASHER
 ON SURFACE - ~~BELOW~~ ON
 LEFT - ☑ PAV'T - RIGHT ON
20.8' TO LT EDGE PAVEMENT
 S.L.M. 1219+45



GRID: NORTHING: 675916.258 EASTING: 1837128.107



RECORD: P.I.
 STA. 228+24 PLAN
 STA. 1219+45
 Δ= 0° 20' LT

FD P.K./WASHER
 ATOP P.K./WASHER
 8/2/95
 SET P.K./WASHER
 6/12/96, MC

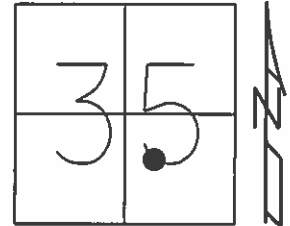
FD P.K./WASHER
 GPS, SV129
 6/17/09, MC

SET MAG/WASHER
 10/22/09, SAH

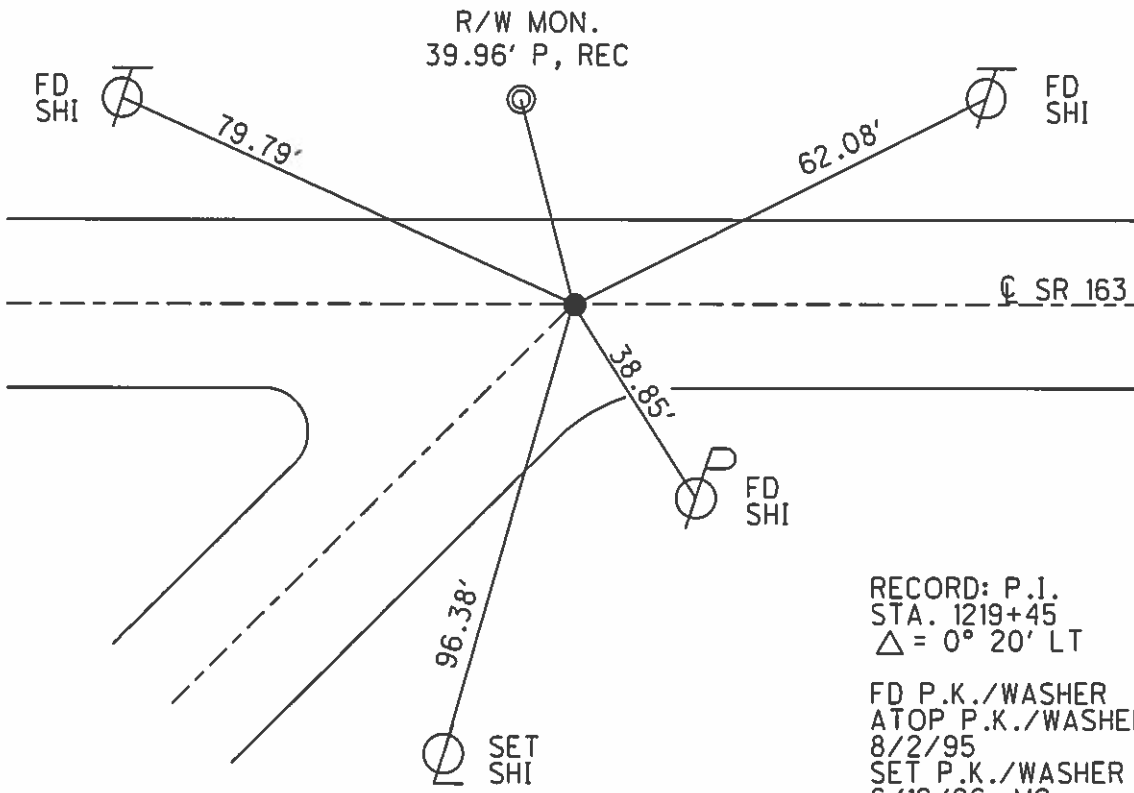
O.D.O.T. DISTRICT 2 SURVEY OFFICE (USE ONLY)

PERSONNEL _____ REFERENCE NO. 119 SHEET 13 OF 14
 NOTES CANTERBURY DATE 6/17/09 ROUTE SR 163
 H.C. HUSS WEATHER CLOUDY COUNTY OTTAWA
 R.C. CANTERBURY TEMP. 78° TOWNSHIP ERIE
 _____ SECTION 35
 _____ T 7 N R 16 E

TYPE MONUMENT P.K./WASHER
 ON SURFACE - ~~BELOW~~ ON
 LEFT - ☉ PAV'T - RIGHT ON
20.8' TO LT EDGE PAVEMENT
 S.L.M. 1219+45, (228+24 PLAN)



Grid: Northing: 675916.258 Easting: 1837128.107



RECORD: P.I.
 STA. 1219+45
 $\Delta = 0^\circ 20' \text{ LT}$
 FD P.K./WASHER
 ATOP P.K./WASHER
 8/2/95
 SET P.K./WASHER
 6/12/96, MC
 FD P.K./WASHER
 GPS, SV129
 6/17/09, MC
 SET MAG/WASHER
 10/22/09, SAH

O.D.O.T. DISTRICT 2 SURVEY OFFICE

PERSONNEL _____

REFERENCE NO. 119

SHEET 12 OF 16

NOTES Rousos

H.C. SLOVAK

DATE 8-2-95

ROUTE S.R. 163

R.C. CANTERBURY

WEATHER FAIR

COUNTY OTTAWA

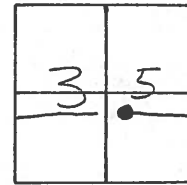
TEMP. +85°F

TOWNSHIP ERIE

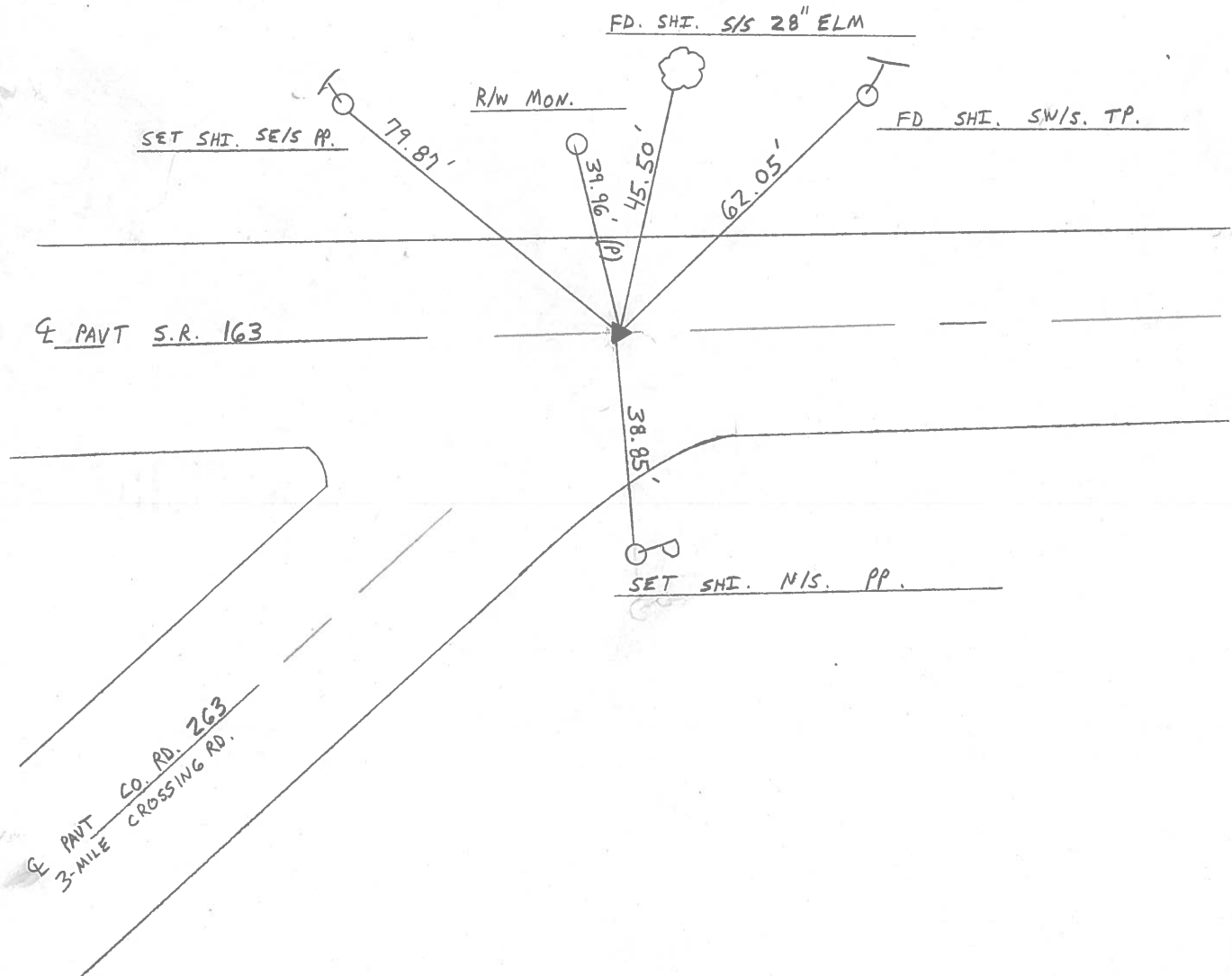
SECTION 35

T 7 N R 16 E

TYPE MONUMENT Reset 6-12-96
PK/WASHER Atop PK/WASHER
 ON SURFACE - ~~BELOW~~ YES ON SURFACE
 LEFT-~~E~~ PAV'T. - RIGHT ON L PAVT
20.0 TO LT EDGE PAVEMENT
 S.L.M. 1219 + 45



P.I. $\Delta = 00^\circ 00' 20''$ LT.



O.D.O.T. DISTRICT 2 SURVEY OFFICE (15)

PERSONNEL

REFERENCE NO. 119

SHEET _____ OF _____

NOTES RIPPLE

H.C. BARBOUR

R.C. GEYMAN

DATE 6/04/91

WEATHER Sunny

TEMP. 63°

ROUTE #163

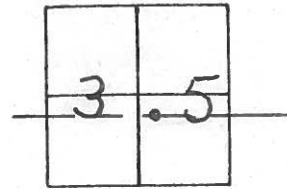
COUNTY OTTAWA

TOWNSHIP ERIE

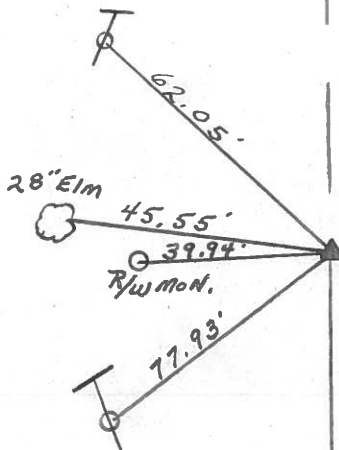
SECTION 35

T 7 N R 16 E

TYPE MONUMENT P.K. WASHER ATop P.K. WASHER
 ON SURFACE - BELOW ON SURFACE
 LEFT - ☉ PAV'T. - RIGHT ☉ PAV'T.
 TO _____ EDGE PAVEMENT
 S.L.M. _____



P.I Δ = 00°00'20" LT.
STA. 119+98 ±



O.D.O.T. DISTRICT 2 SURVEY OFFICE (5)

PERSONNEL

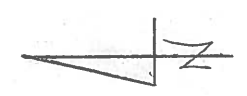
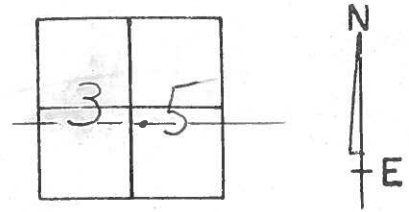
REFERENCE NO. 119 SHEET OF

NOTES CROWIN
H.C. RIPPLE
R.C. BARBOUR
GEYMAN

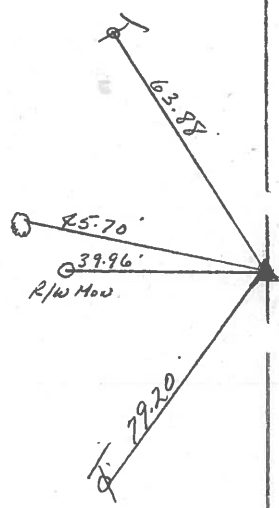
DATE 9/12/85
WEATHER SUNNY WINDY
TEMP. 58°

ROUTE #163
COUNTY OTTAWA
TOWNSHIP ERIE
SECTION
T7 NR 16 E

TYPE MONUMENT P.K. WASHER AT OP. P.K. WASHER
ON SURFACE - BELOW ON SURFACE
LEFT - & PAV'T. - RIGHT & PAV'T.
TO EDGE PAVEMENT
S.L.M.



P.I. A = 00°00'20" Lt
120+00 ±



Q.D.O.T. DISTRICT 2 SURVEY OFFICE

Sht. 2 of 8

County Ottawa S.R. # 163

Date 6/25/80

Township ERIE

Weather sunny-hot-humid

Section S.E. 1/4 Sec. 35

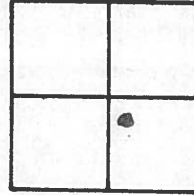
Temp. 79°

TZN, R16E

Personnel CRONIN SCHNEIDER

RIPPLE MOSSER

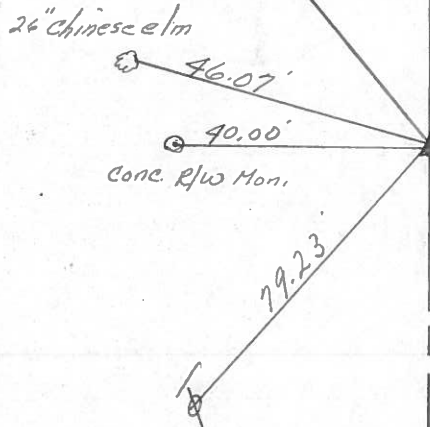
GEYMAN BARBOUR



119



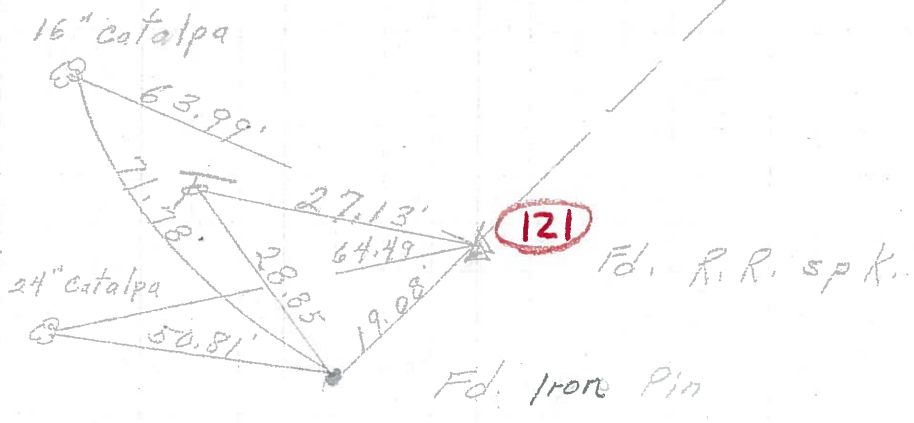
P.I.
Δ = 00° 00' 20" Lt.
120 + 00 ±
Set P.K. & washer - used
Mon. for line



E.R/W S.R. # 163

PERSONNEL	TITLE	PERSONNEL	TITLE	COUNTY	DATE
					3-27-72
				S. R. 163	WEATHER Fair
				SEC. 35	TEMP. 40'
DESCRIPTION	Erie Twp.				JOB NO.

P.I.
 170 + 71.70
 $\Delta = 31^{\circ} 53' \text{ Rt.}$
 121



P.I.
 154 + 03.3
 120

Δ did not find

P.O.T.
 120 + 30.2
 Iron pin
 119

did not find
 old S.R. # 163

Found
 Nail & shiner
 2" down
 118

