

O.D.O.T. DISTRICT 2 SURVEY OFFICE (USE ONLY)

PERSONNEL _____ REFERENCE NO. 120 SHEET 14 OF 14
 NOTES CANTERBURY DATE 6/17/09 ROUTE SR 163
 H.C. HUSS WEATHER OVERCAST COUNTY OTTAWA
 R.C. CANTERBURY TEMP. 78 F TOWNSHIP ERIE
 _____ SECTION 36
 DWG BY GARRETT PID NO PID T 7 N R 16 E

TYPE MONUMENT RR SPIKE

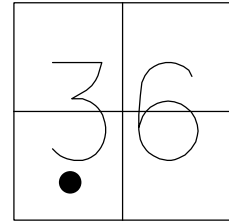
~~ON SURFACE~~ - BELOW 0.35'

OFFSET \odot PAVEMENT 13.0' ~~LT~~ : RT
0.9 TO RT EDGE PAVEMENT

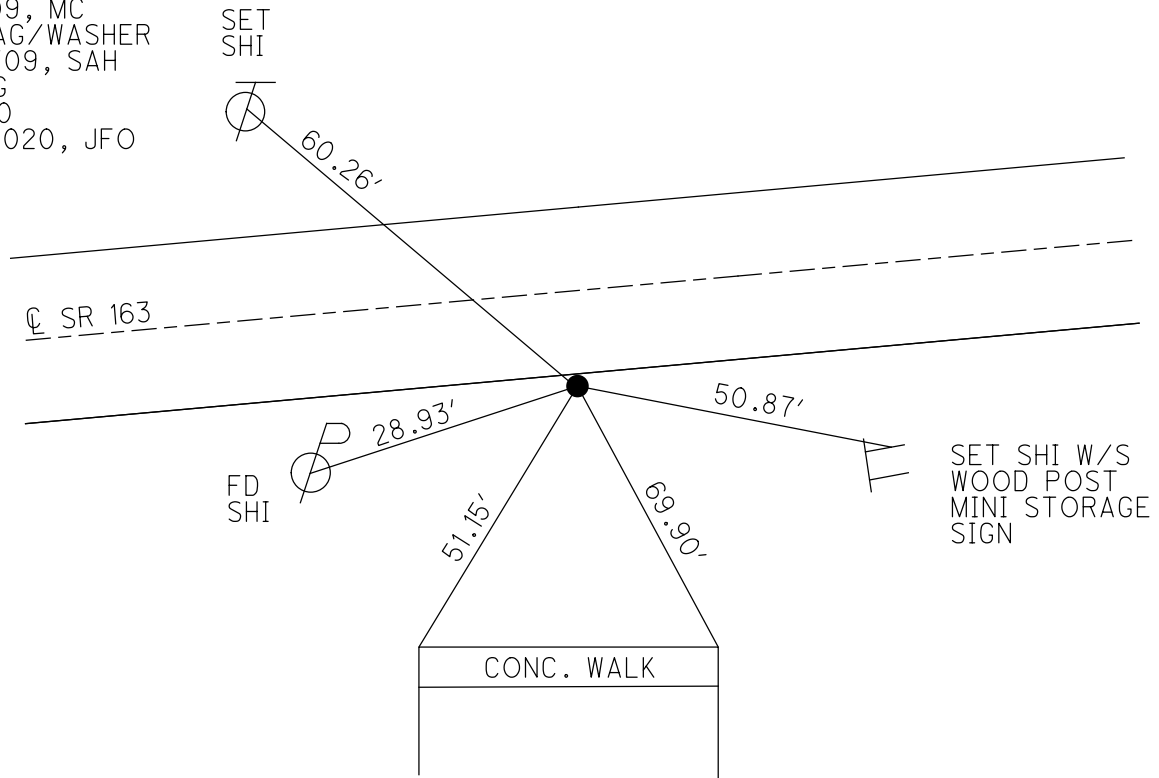
STATION: _____ 1253+50

HORZ. DATUM: NAD83 (2011) GEOID: 2018

GRID: NORTHING: 675916.047 EASTING: 1840530.589



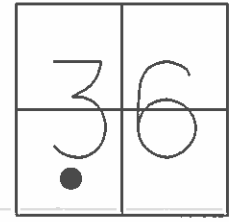
RECORD: P.I.
 STA. 262+26 PLAN
 STA. 154+03.30 PLAN
 $\Delta = 7^\circ 50'$ LT, PLAN & MEAS.
 6/25/80
 FD R.R.SPIKE
 2" BELOW
 8/2/95
 SET P.K./WASHER
 6/10/96, MC
 FD R.R.SPIKE
 SV130
 6/17/09, MC
 SET MAG/WASHER
 10/22/09, SAH
 FD MAG
 REF 120
 6/18/2020, JFO



O.D.O.T. DISTRICT 2 SURVEY OFFICE (USE ONLY)

PERSONNEL _____ REFERENCE NO. 120 SHEET 14 OF 14
 NOTES CANTERBURY DATE 6/17/09 ROUTE SR 163
 H.C. HUSS WEATHER OVERCAST COUNTY OTTAWA
 R.C. CANTERBURY TEMP. 78° TOWNSHIP ERIE
 SECTION 36
 T 7 N R 16 E

TYPE MONUMENT RR SPIKE
~~ON SURFACE~~ - BELOW 0.35'
~~LEFT~~ - CL PAV'T - RIGHT 13.0'
0.9' TO RT EDGE PAVEMENT
 S.L.M. 1253+50
 GRID: NORTHING: 675916.074 EASTING: 1840530.591

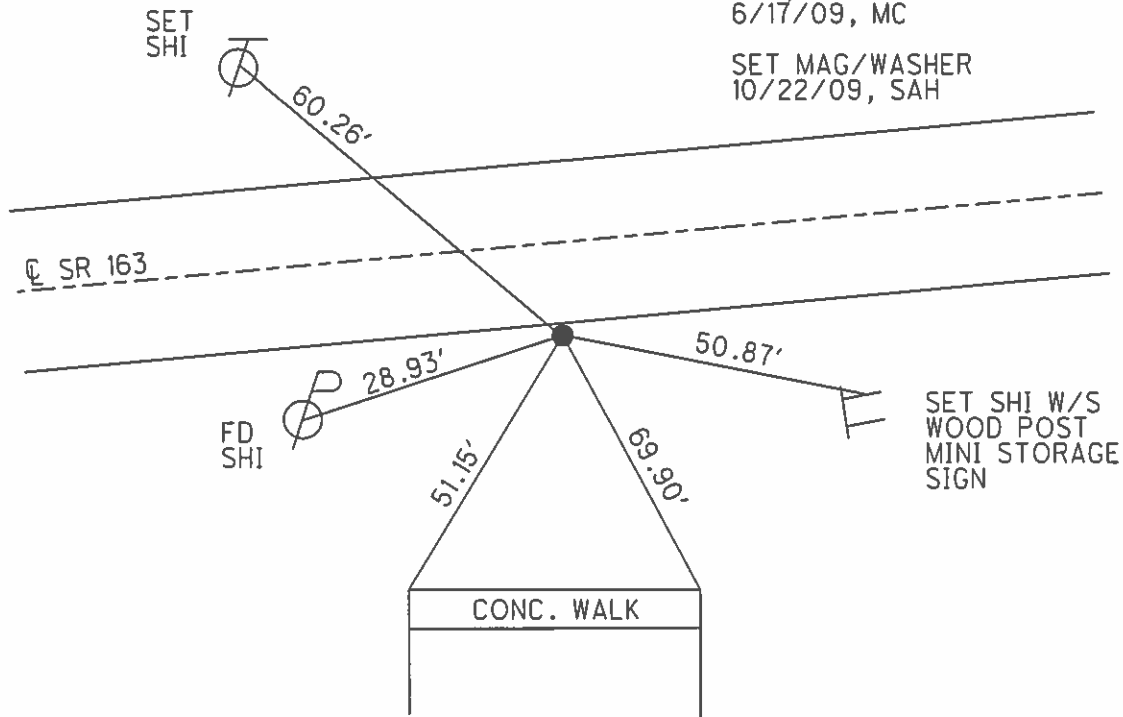


RECORD: P.I.
 STA. 262+26 PLAN
 STA. 154+03.30 PLAN
 $\Delta = 7^\circ 50'$ LT, PLAN & MEAS.
 JUNE 25, 1980 TIES
 SEE PLAN FOR CURVE DATA.

FD R.R. SPIKE
 2" BELOW
 8/2/95
 SET P.K./WASHER
 6/10/96, MC

FD R.R. SPIKE
 GPS, SV130
 6/17/09, MC

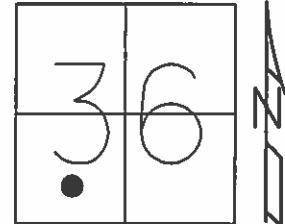
SET MAG/WASHER
 10/22/09, SAH



O.D.O.T. DISTRICT 2 SURVEY OFFICE (USE ONLY)

PERSONNEL _____ REFERENCE NO. 120 SHEET 14 OF 14
 NOTES CANTERBURY DATE 6/17/09 ROUTE SR 163
 H.C. HUSS WEATHER OVERCAST COUNTY OTTAWA
 R.C. CANTERBURY TEMP. 78° TOWNSHIP ERIE
 _____ SECTION 36
 _____ T 7 N R 16 E

TYPE MONUMENT R.R.SPIKE
~~ON SURFACE~~ - BELOW 0.35'
~~LEFT~~ - \odot PAV'T - RIGHT 13.0'
0.9' TO RT EDGE PAVEMENT
 S.L.M. 1253+50, (262+26 PLAN)



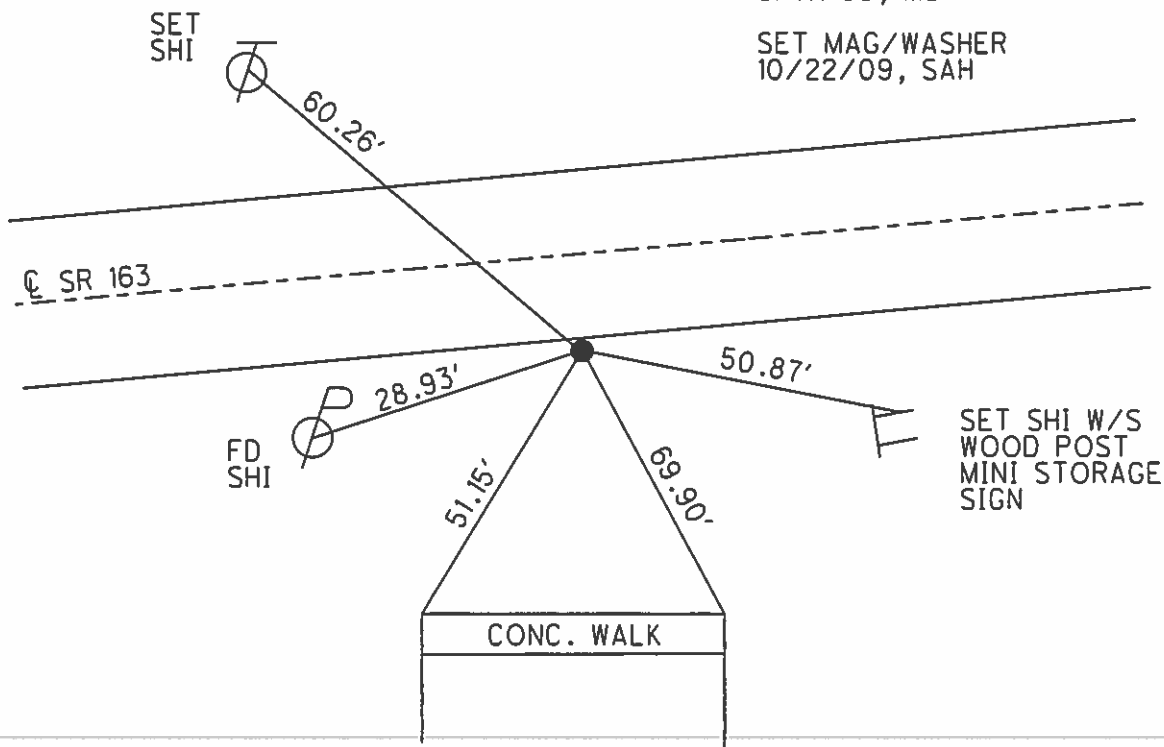
Grid: Northing: 675916.074 Easting: 1840530.591

RECORD: P.I.
 PLAN STA. 154+03.30
 $\Delta = 7^\circ 50'$ LT, PLAN & MEAS.
 JUNE 25, 1980 TIES
 SEE PLAN FOR CURVE DATA.

FD R.R.SPIKE
 2" BELOW
 8/2/95
 SET P.K./WASHER
 6/10/96, MC

FD R.R.SPIKE
 GPS, SV130
 6/17/09, MC

SET MAG/WASHER
 10/22/09, SAH



O.D.O.T. DISTRICT 2 SURVEY OFFICE

PERSONNEL _____

REFERENCE NO. 120

SHEET 13 OF 16

NOTES ROUSOS

H.C. SLOVAK

R.C. CANTERBURY

DATE 8-2-95

WEATHER SUNNY

TEMP. 85°

ROUTE SR 163

COUNTY OTTAWA

TOWNSHIP ERIE

SECTION 36

T 7 N R 16 E

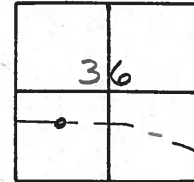
Set P.K. / WASHER
6-10-96.

TYPE MONUMENT RR SPIKE

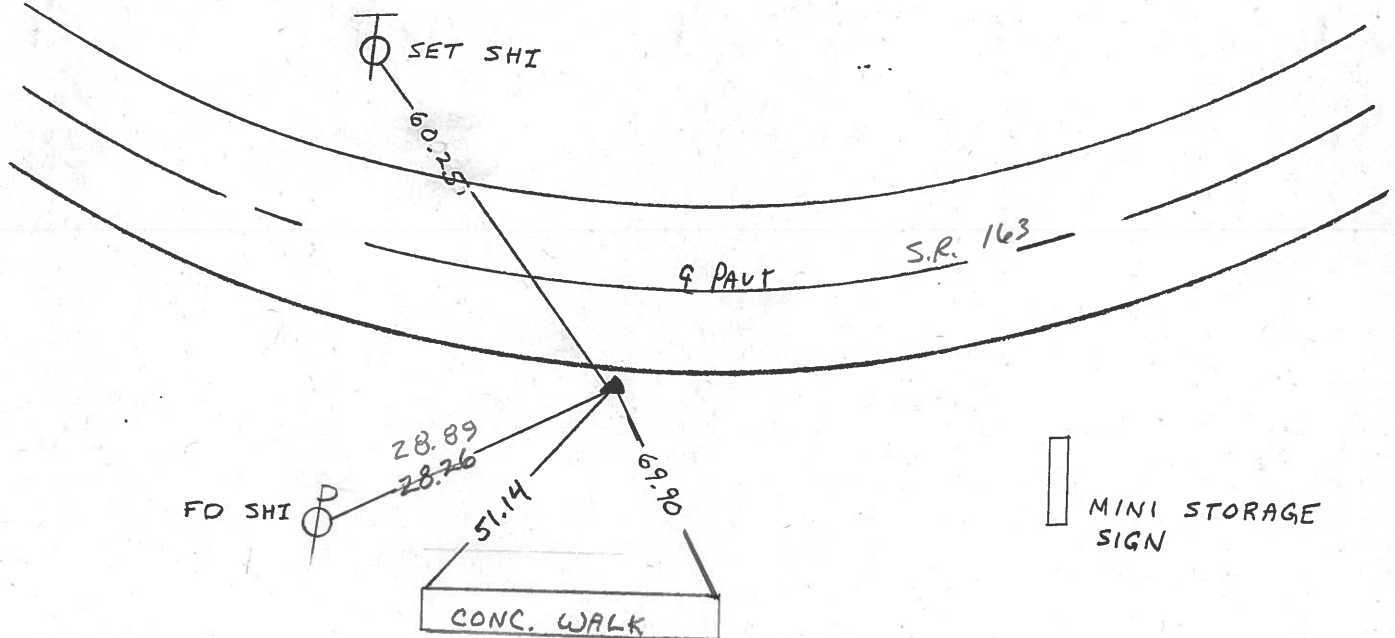
ON SURFACE - BELOW 2" BELOW SURFACE

~~LEFT~~ - CL PAV'T. - RIGHT 13.2' RT & PAVT
1.2' RT TO RT EDGE PAVEMENT

S.L.M. 1253 +50



PI $\Delta = 7^{\circ}50'$ LT. PLAN & MEAS
 154 + 03.30 = PLAN STA.
 REF. JUNE 25, 1980 TIES
 SEE PLANS FOR CURVE DATA



O.D.O.T. DISTRICT 2 SURVEY OFFICE (16)

PERSONNEL

REFERENCE NO. 120

SHEET _____ OF _____

NOTES Ripple

H.C. BARBOUR

DATE 6/04/91

ROUTE #163

R.C. Geyman

WEATHER Sunny

COUNTY OTTAWA

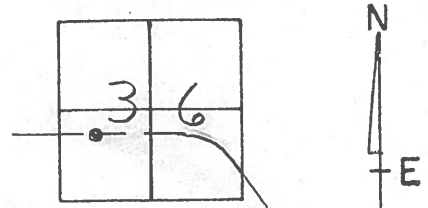
TEMP. 63°

TOWNSHIP ERIE

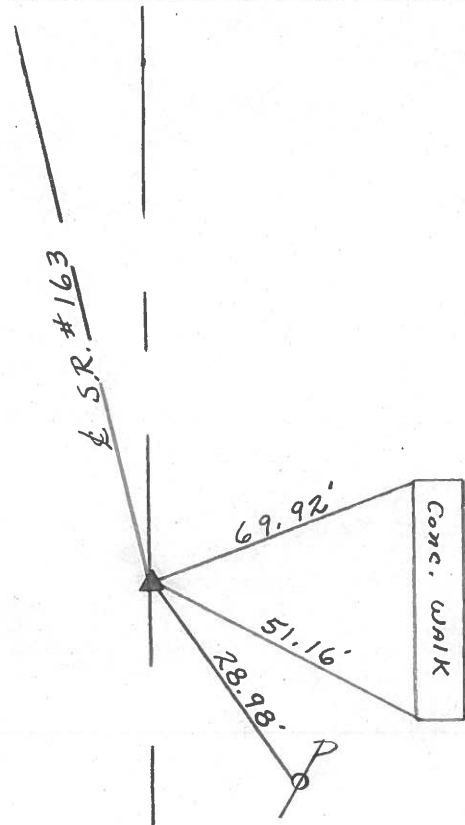
SECTION 36

T 7 N R 16 E

TYPE MONUMENT R/R spike
 ON SURFACE - BELOW 2" Below Surface
 LEFT- & PAV'T. - RIGHT 13' RT. & PAV'T.
 TO _____ EDGE PAVEMENT
 S.L.M. _____



P.I. Δ = 7° 50' LT. Plan & Meas.
154+03.30 = PLAN STA.
Ref. June 25, 1980 Ties
see PLANS for CURVE DATA



O.D.O.T. DISTRICT 2 SURVEY OFFICE ①⑥

PERSONNEL

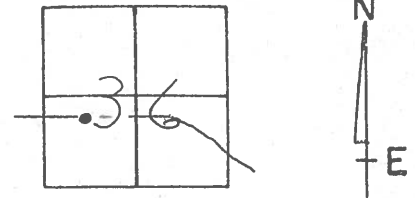
REFERENCE NO. 120 SHEET OF

NOTES CROWIN
 H.C. RIPPLE
 R.C. BARBOUR
GEYMAN

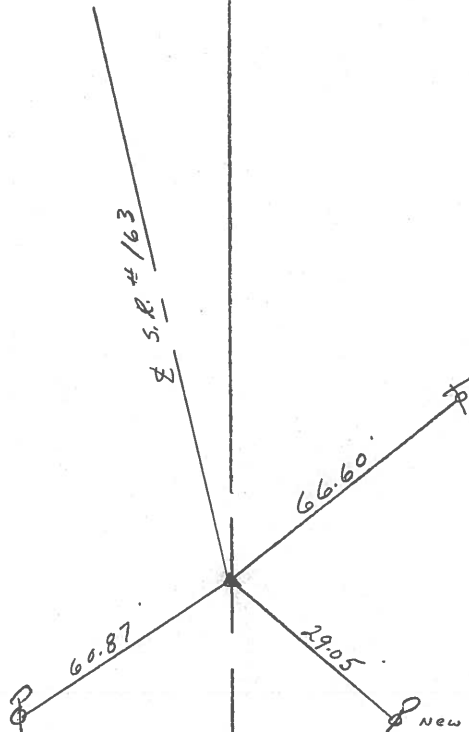
DATE 9/12/85
 WEATHER SUNNY-WINDY
 TEMP. 58°

ROUTE #163
 COUNTY OTTAWA
 TOWNSHIP ERIE
 SECTION 36
T7 N R 16 E

TYPE MONUMENT R.R. SPIKE
 ON SURFACE - BELOW 2" BELOW SURFACE
 LEFT - & PAV'T. - RIGHT 13' RT. & PAVT.
 TO EDGE PAVEMENT
 S.L.M.



P.I. Δ = 7°50' Lt. Plan & Mens
154 + 03.30
REF. JUNE 25, 1980 TIES
SEE PLANS FOR CURVE DATA



County Ottawa S.R. # 163

Date 6/25/80

Township ERIE

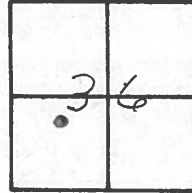
Weather sunny-hot-humid

Section 36

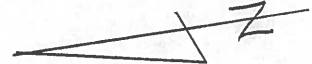
Temp. 79°

T1N, R16E

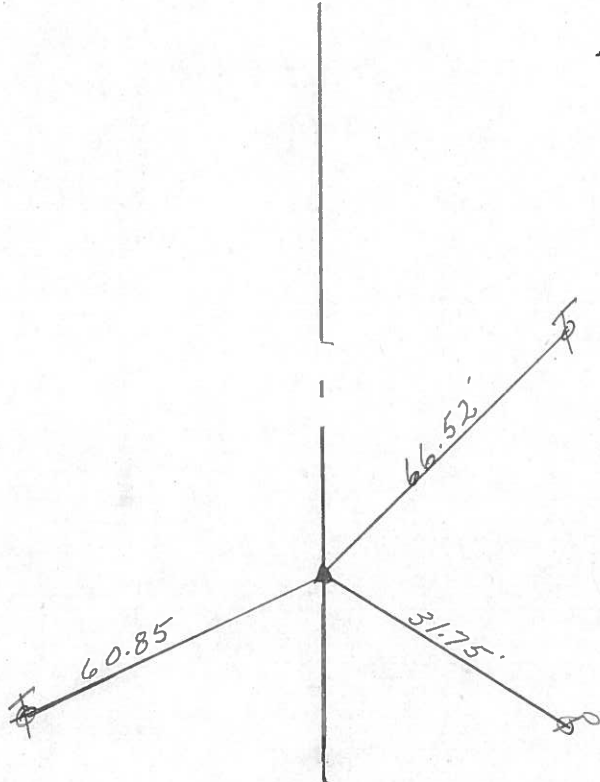
Personnel CEONIN SCHNEIDER
RIPPLE MOSSER
GEXMAN BARBOUR



#120



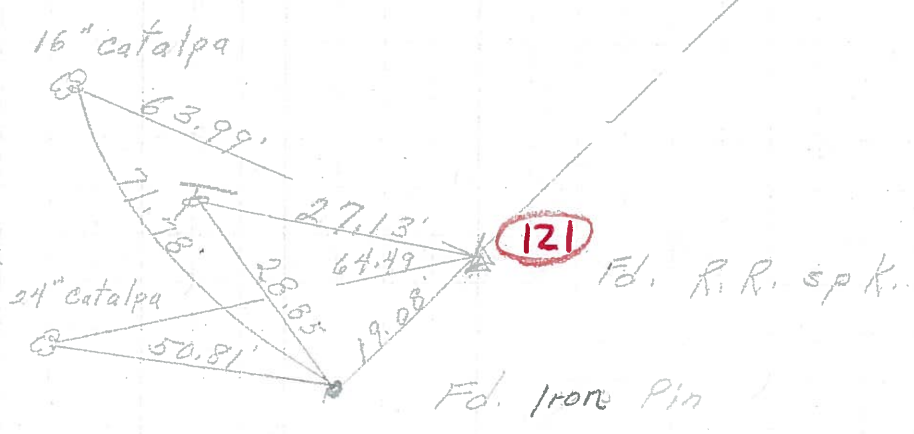
P.I.
 $\Delta = 7^{\circ} 50'$ Lt. Plan. & Meas.
154+03.3
 Set R.R. spike using R/W
 Monuments found from Sta:
120± to P.C. @ 165+80.71



R/W S.R. #163A

PERSONNEL	TITLE	PERSONNEL	TITLE	COUNTY	DATE
					<u>3-27-72</u>
				S. R. <u>163</u>	WEATHER <u>Fair</u>
				SEC. <u>35</u>	TEMP. <u>40'</u>
DESCRIPTION	<u>Erie Twp.</u>			JOB NO.	

P.I.
 170 + 71.70
 $\Delta = 31^\circ 53' \text{ Rt.}$
121



P.I.
 154 + 03.3
120

Δ did not find

P.O.T.
 120 + 30.2
 Iron pin
119

did not find
 Old S.R. # 163

Found
 Nail & Skinner
 2" down
118

