

O.D.O.T. DISTRICT 2 SURVEY OFFICE (USE ONLY)

PERSONNEL _____ REFERENCE NO. 121 SHEET 1 OF 27
 NOTES CANTERBURY DATE 8/2/95 ROUTE SR 163
 H.C. ROUSOS WEATHER FAIR COUNTY OTTAWA
 R.C. LOEHRKE TEMP. 85° TOWNSHIP ERIE
 DWG BY NIESE PID _____ SECTION 36
 T 7 N R 16 E

TYPE MONUMENT 3/4" IPIPE (SPLIT ON N SIDE)

ON SURFACE - ~~BELOW~~ ON _____

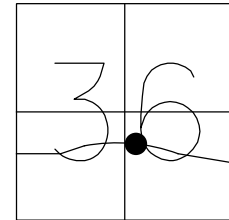
OFFSET \odot PAVEMENT 68.2' LT : ~~RT~~

57' LT TO LT EDGE PAVEMENT

STATION: 1270+00

HORZ.DATUM: _____ GEOID: _____

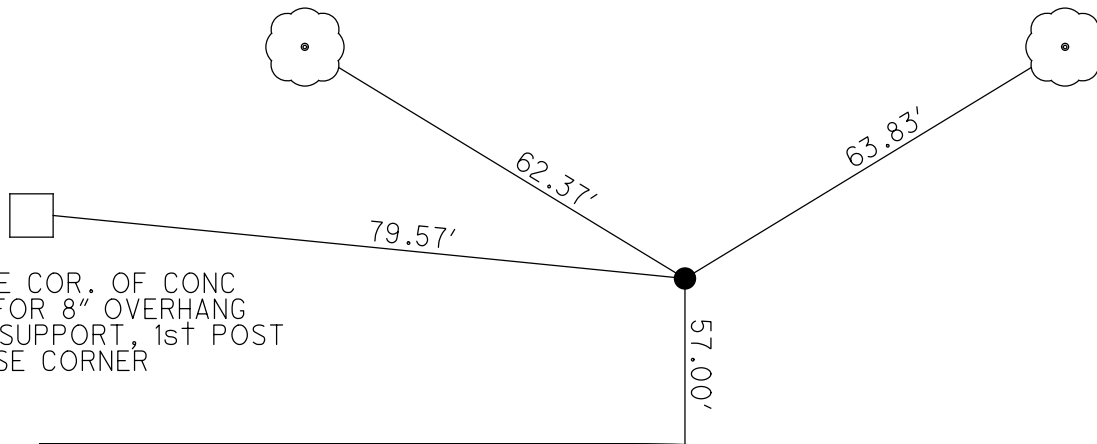
GRID: NORTHING: _____ EASTING: _____



RECORD:
 FD 3/4" IPIN
 SPLIT ON N SIDE
 POINT IN PARKING
 LOT OF CHINESE
 RESTAURANT
 8/2/95, MRC

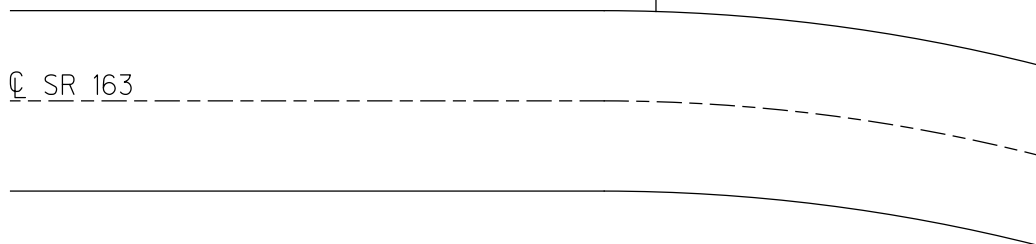
FD SHI
 24" CATALPA

FD SHI
 19" CATALPA



TOP SE COR. OF CONC
 BASE FOR 8" OVERHANG
 ROOF SUPPORT, 1st POST
 W OF SE CORNER

\odot SR 163



O.D.O.T. DISTRICT 2 SURVEY OFFICE

PERSONNEL _____

REFERENCE NO. 121

SHEET 14 OF 16

NOTES CANTERBURY

H.C. ROUSOS

R.C. LOEHRKE

DATE 8-2-95

WEATHER FAIR

TEMP. +85°F

ROUTE S.R. 163

COUNTY OTTAWA

TOWNSHIP ERIE

SECTION 36

T 7 N R 16 E

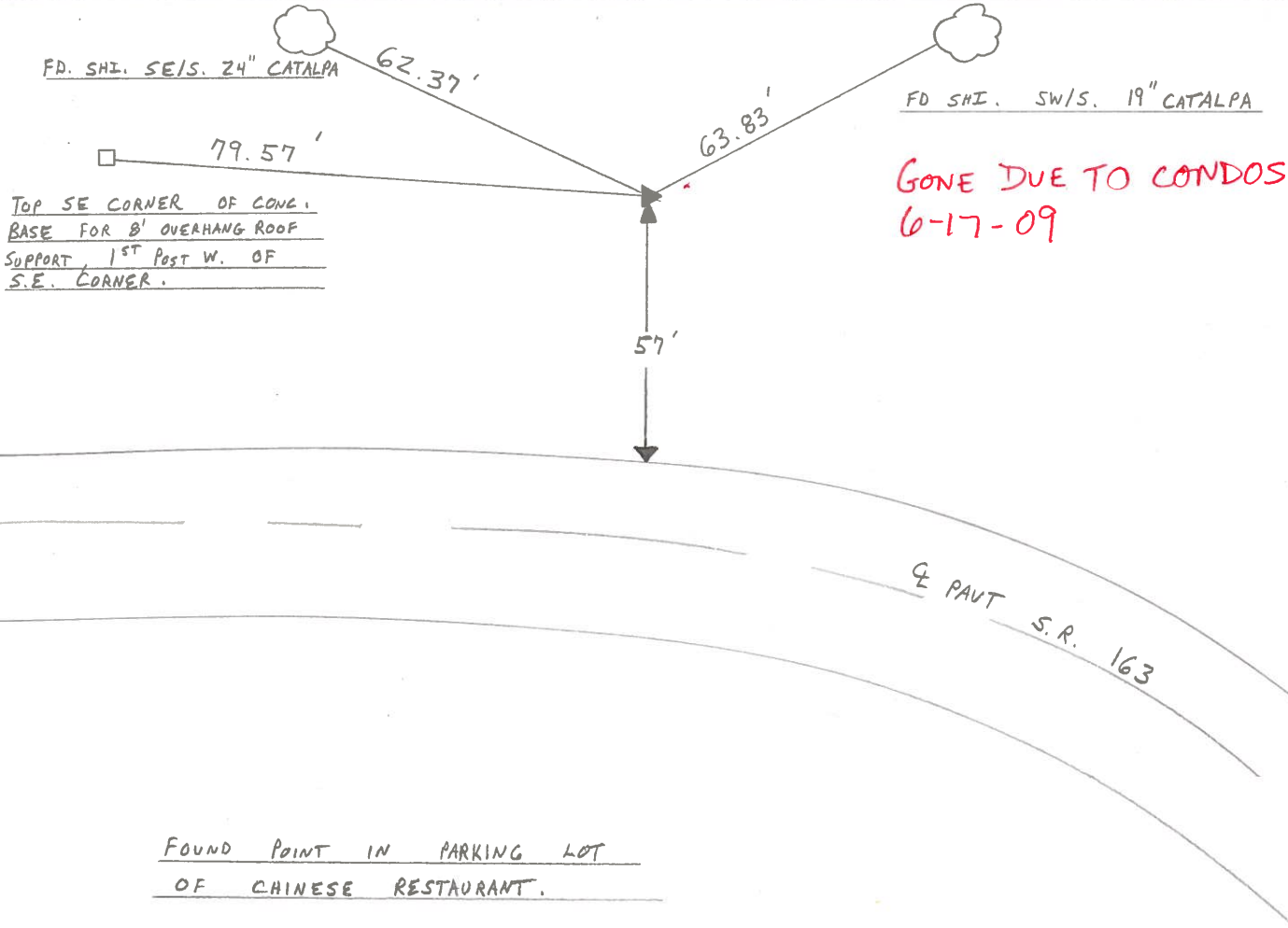
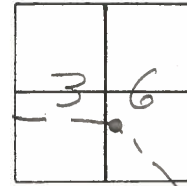
TYPE MONUMENT 3/4" I. PIPE (SPLIT ON N. SIDE)

ON SURFACE - BELOW YES ON SURFACE

LEFT - CL PAV'T. - RIGHT 68.2' LT CL PAVT.

57' LT ^{OF} TO LT EDGE PAVEMENT

S.L.M. 1270 + 00



O.D.O.T. DISTRICT 2 SURVEY OFFICE

PERSONNEL _____

REFERENCE NO. 121

SHEET 14 OF 16

NOTES CANTERBURY

H.C. ROUSOS

R.C. LOEHRKE

DATE 8-2-95

WEATHER FAIR

TEMP. +85°F

ROUTE S.R. 163

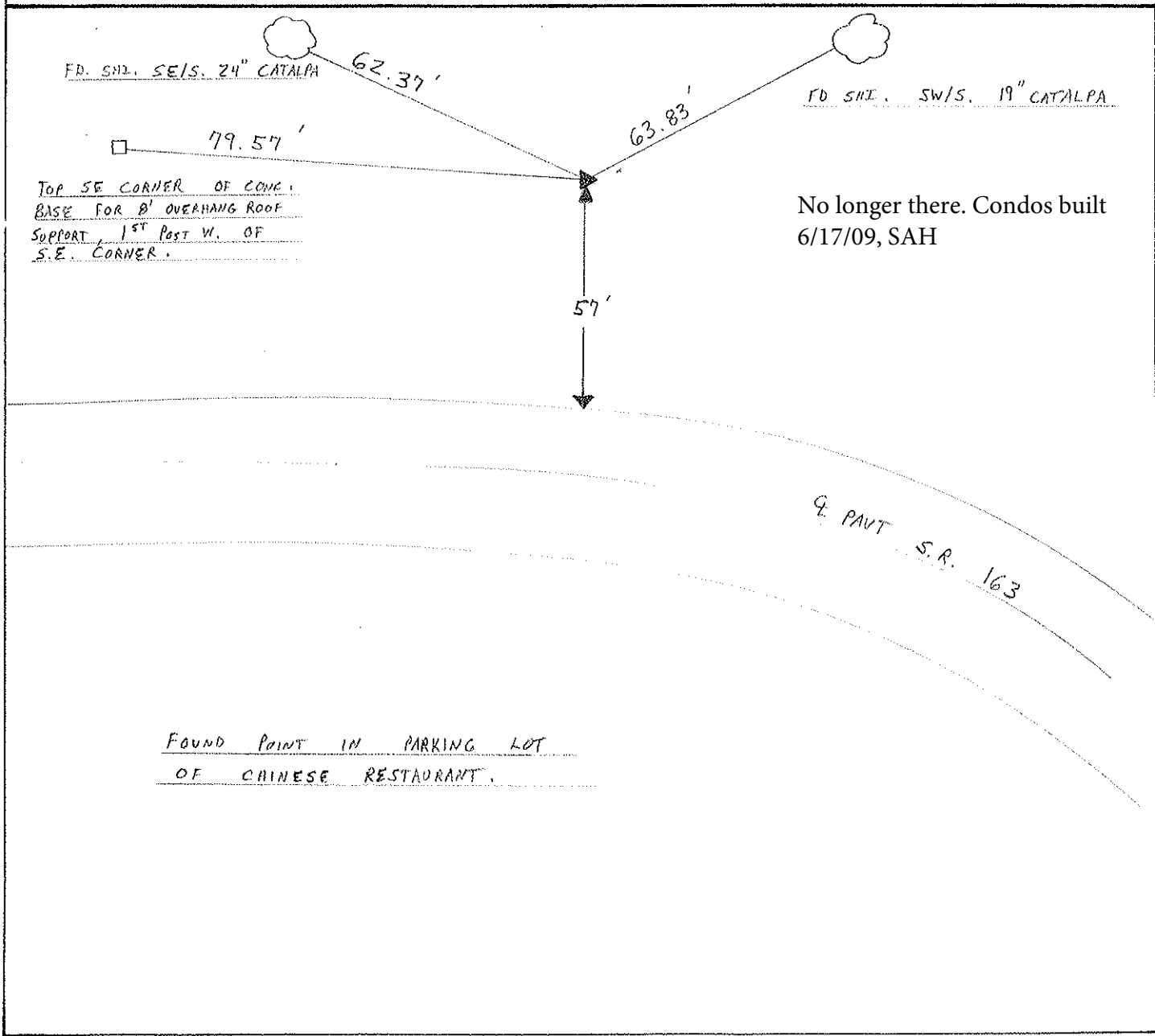
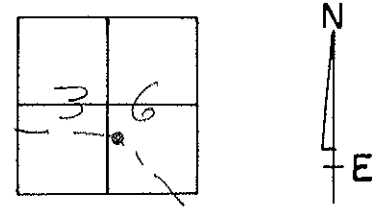
COUNTY OTTAWA

TOWNSHIP ERIE

SECTION 36

T 7 N R 16 E

TYPE MONUMENT 3/4" I. PIPE (SPLIT ON N. SIDE)
 ON SURFACE - BELOW YES ON SURFACE
 LEFT - Q PAV'T. - RIGHT 68.2' LT Q PAVT.
~~57' LT~~ ^{OF} ~~TO~~ LT EDGE PAVEMENT
 S.L.M. 1270 + 00



O.D.O.T. DISTRICT 2 SURVEY OFFICE (17)

PERSONNEL _____

REFERENCE NO. 121

SHEET _____ OF _____

NOTES RIPPLE

H.C. BARBOUR

R.C. GEYMAN

DATE 6/04/91

WEATHER Sunny

TEMP. 63°

ROUTE # 163

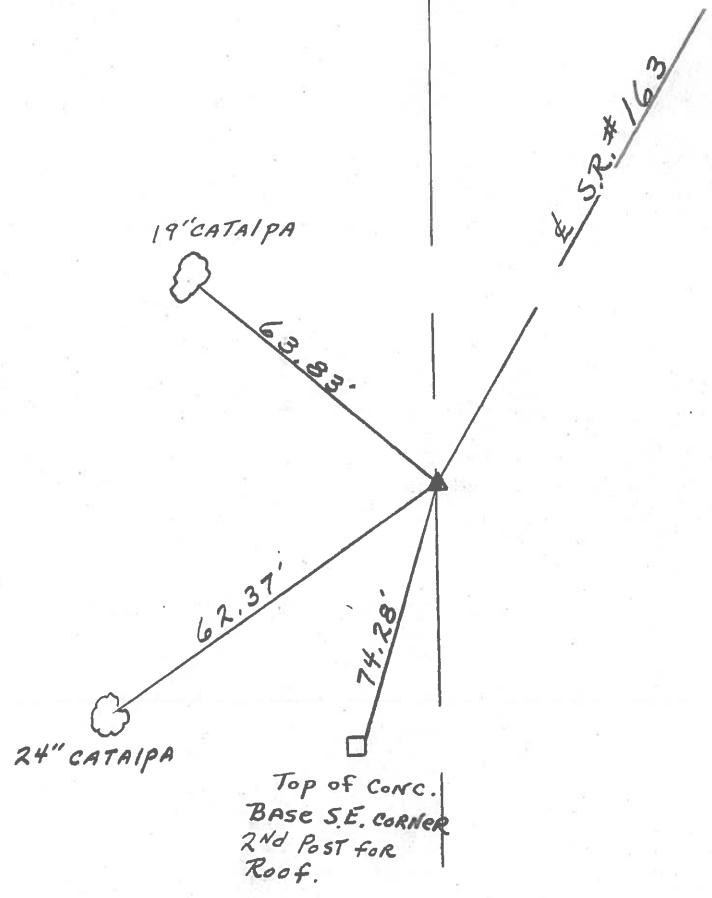
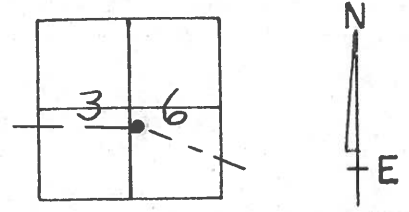
COUNTY OTTAWA

TOWNSHIP ERIC

SECTION 36

T. 7 N. R. 16 E

TYPE MONUMENT 3/4" I. Pipe (split on N. side)
 ON SURFACE - BELOW 3" Below Surface
 LEFT - PAV'T. - RIGHT 68.3' LT. & PAV'T.
 _____ TO _____ EDGE PAVEMENT
 S.L.M. _____



O.D.O.T. DISTRICT 2 SURVEY OFFICE (17)

PERSONNEL

REFERENCE NO. 121

SHEET _____ OF _____

NOTES CRONIN

H.C. RIPPLE

R.C. BARBOUR

GEYMAN

DATE 9/12/85

WEATHER SUNNY - WINDY

TEMP. 58°

ROUTE #163

COUNTY OTTAWA

TOWNSHIP ERIE

SECTION 36

T 7 N R 16 E

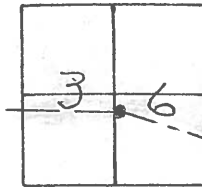
TYPE MONUMENT 3/4" I.P. PIPE (SPLIT ON N. SIDE)

ON SURFACE - BELOW 3" BELOW SURFACE

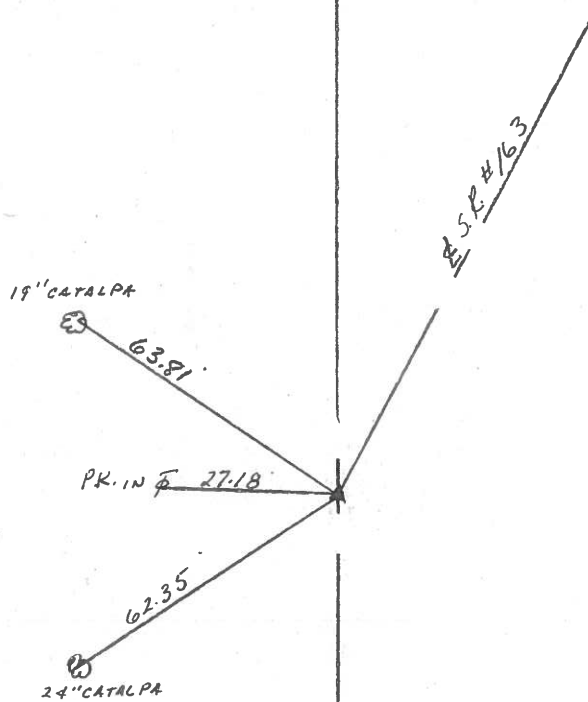
LEFT - ☉ PAV'T. - RIGHT 68.3' LT. & PAV'T.

TO _____ EDGE PAVEMENT

S.L.M. _____



31° 54' 40" R.L. MEAS
P.I. A = 31° 53' 00" R.L. PLAN
170 + 71.70
REF. SEE 6/25/80 TIES



County Ottawa S.R. # 163

Township ERIE

Section # 36

T1N, R16E

Personnel CRONIN SCHNEIDER

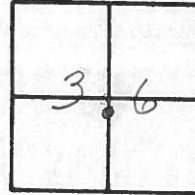
RIPPLE MOSSER

GEYMAN BARBOUR

Date 6/25/80

Weather sunny-hot-humid

Temp. 81°



121



17" catalpa



63.88'

P.K. in Φ 27.15'

62.43'

22" catalpa



P.I.

31° 54' 40" Rt. Meas.

A = 31° 53' 00" Rt. Plan

170 + 71.70

Fd. 3/4" iron pipe (split on

N. side 3" below surface

Used conc. R/w Monuments

@ P.T. Sta. 157 + 94.33; P.C.

Sta. @ 165 + 80.71, @ Rt. Sta.

175 + 37.21. There is a 9.50't

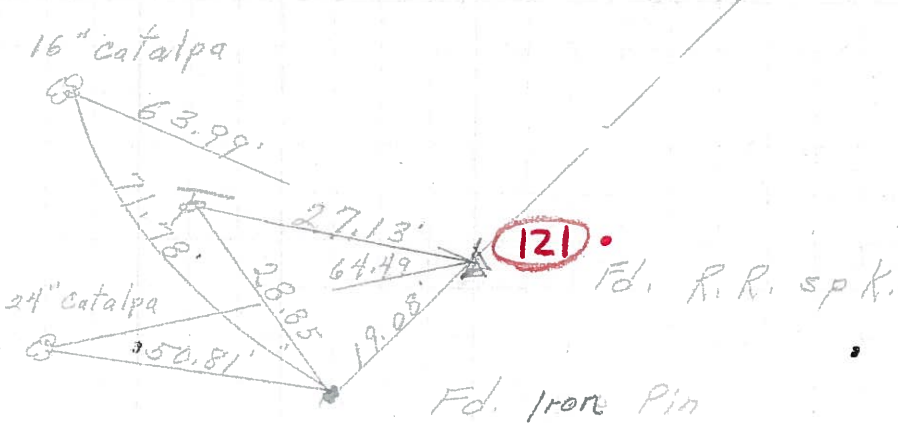
diff. between P.T. @ 157 + 94.33

& P.C. @ 165 + 80.71

& R/w S.P. # 163

PERSONNEL	TITLE	PERSONNEL	TITLE	COUNTY	DATE
					<u>3-27-72</u>
				S. R. <u>163</u>	WEATHER <u>Fair</u>
				SEC. <u>35</u>	TEMP. <u>40'</u>
DESCRIPTION	<u>Erie Twp.</u>			JOB NO.	

P.I.
 170 + 71.70
 $\Delta = 31^{\circ} 53' \text{ Rt.}$
121



P.I.
 154 + 03.3
120

Δ did not find

P.O.T.
 120 + 30.2
 Iron Pin
119

did not find
 Old S.R. # 163

Found
 Nail & skiner
 2" down
118

