

O.D.O.T. DISTRICT 2 SURVEY OFFICE (USE ONLY)

PERSONNEL \_\_\_\_\_

REFERENCE NO. 122

SHEET 2 OF 27

NOTES ROUSOS

DATE 8/2/95

ROUTE SR 163

H.C. SLOVAK

WEATHER SUNNY

COUNTY OTTAWA

R.C. CANTERBURY

TEMP. 85°

TOWNSHIP ERIE

SECTION 36

DWG BY NIESE

PID \_\_\_\_\_

T 7 N R 16 E

TYPE MONUMENT P.K./WASHER

~~ON SURFACE~~ - BELOW 2"

OFFSET 2.2' Q PAVEMENT 10.0' ~~±~~ : RT

2.2' TO RT EDGE PAVEMENT

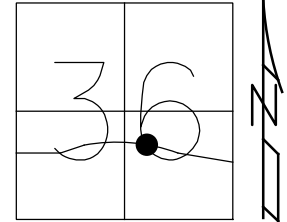
STATION: 1280+10

HORZ. DATUM: \_\_\_\_\_

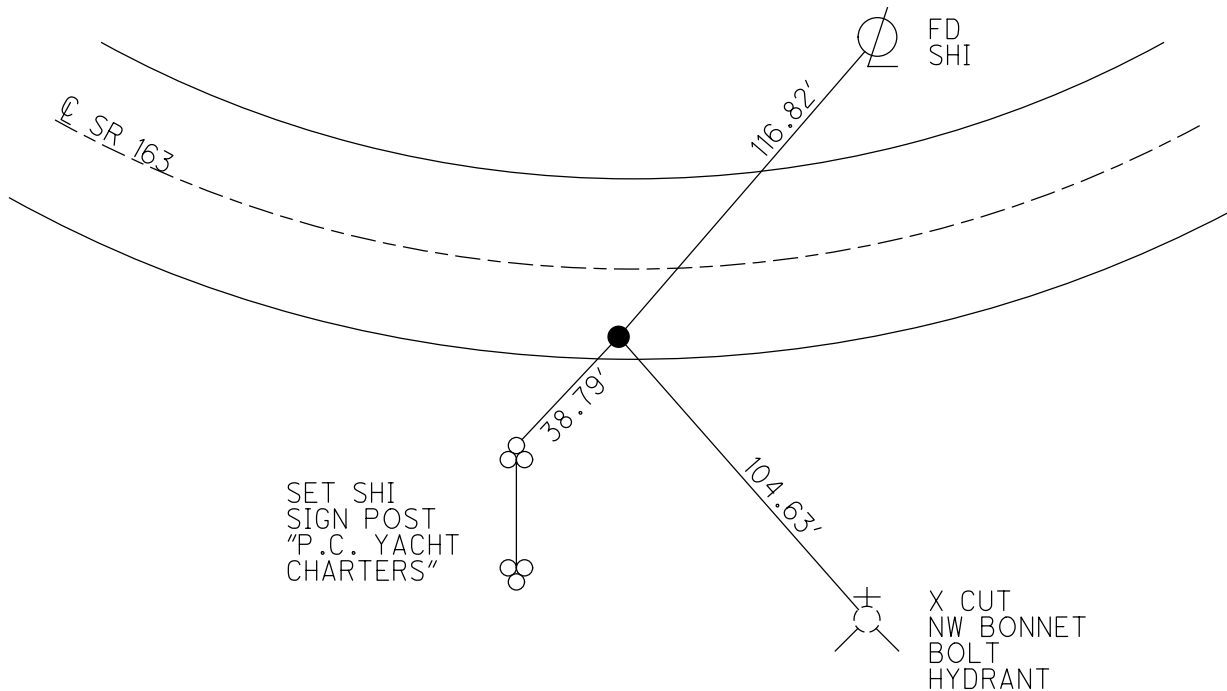
GEOID: \_\_\_\_\_

GRID: NORTHING: \_\_\_\_\_

EASTING: \_\_\_\_\_



RECORD: P.I.  
 $\Delta = 09^{\circ}33'00''$  LT  
 STA 180+67.52  
 FD P.K./WASHER  
 2" DOWN  
 8/2/95, TMR



# O.D.O.T. DISTRICT 2 SURVEY OFFICE

PERSONNEL

REFERENCE NO. 122

SHEET 15 OF 16

NOTES ROUSOS

H.C. SLOVAK

R.C. CANTERBURY

DATE 8-2-95

WEATHER SUNNY

TEMP. 85°

ROUTE SR 163

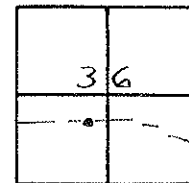
COUNTY OTTAWA

TOWNSHIP ERIE

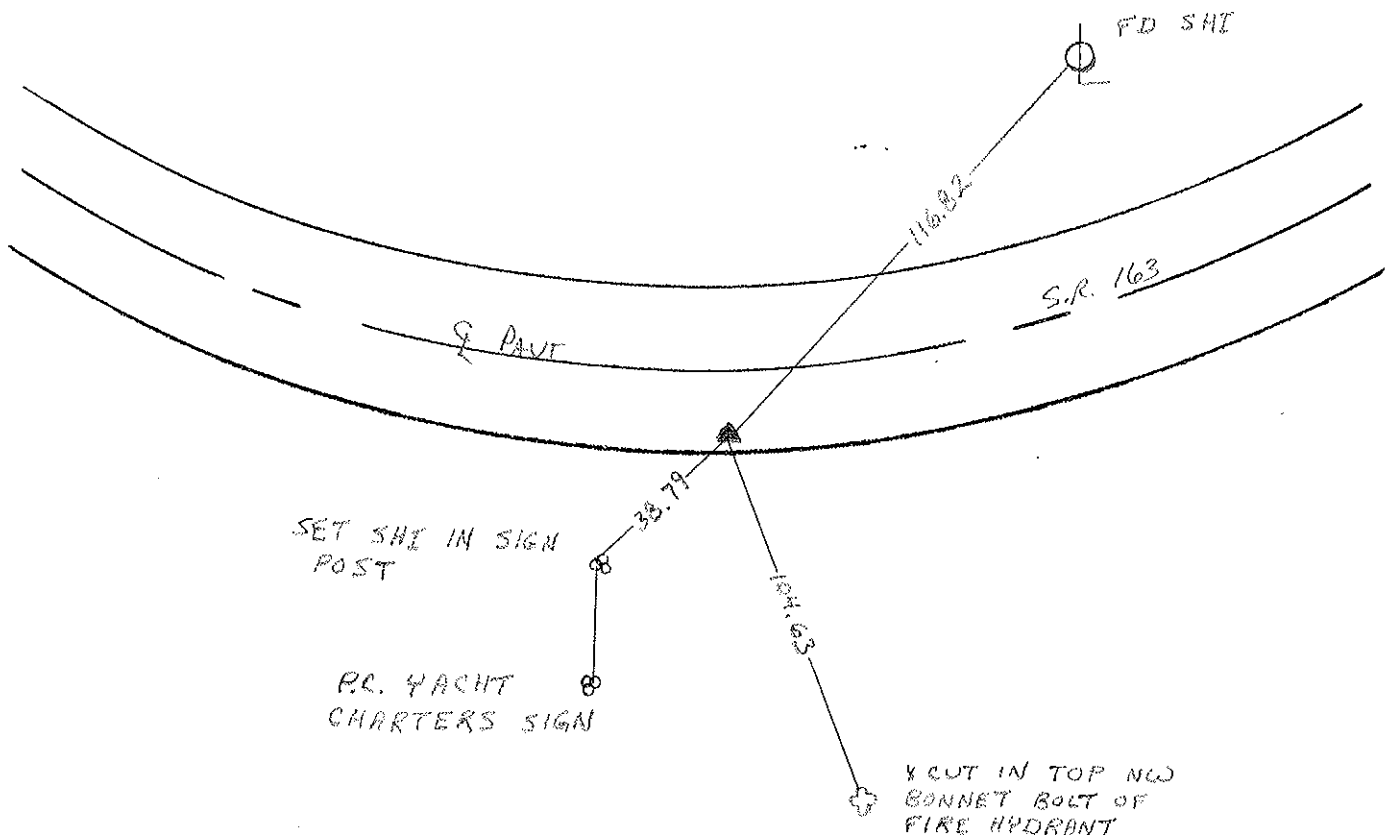
SECTION 36

T 7 N R 16 E

TYPE MONUMENT PK & WASHER  
 ON SURFACE - BELOW 2" BELOW SURFACE  
 LEFT - ℄ PAVT. - RIGHT 10.0' RT & PAVT  
2.2' TO RT EDGE PAVEMENT  
 S.L.M. 1280+10



PI  $\Delta = 9^{\circ}33'$  LT. PLAN & MEAS  
 180+67.52  
 REF. SEE 6/25/80 TIES



# O.D.O.T. DISTRICT 2 SURVEY OFFICE

PERSONNEL \_\_\_\_\_

REFERENCE NO. 122

SHEET <sup>(18)</sup> \_\_\_\_\_ OF \_\_\_\_\_

NOTES CRONIN

H.C. RIPPLE

R.C. BARBOUR

GEYHAN

DATE 9/12/85

WEATHER SUNNY-WINDY

TEMP. 60°

ROUTE #163

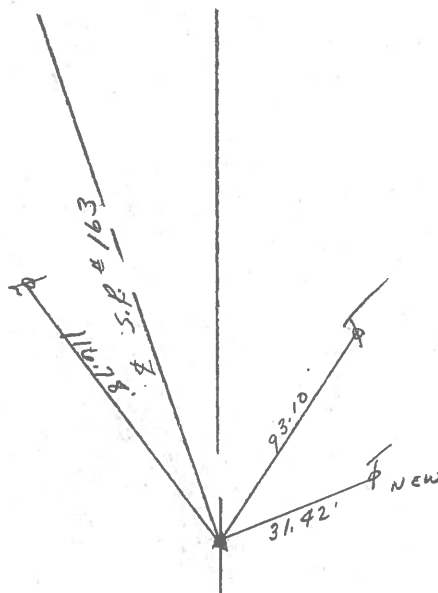
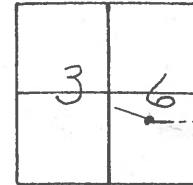
COUNTY OTTAWA

TOWNSHIP ERIE

SECTION 36

T 7 N R 16 E

TYPE MONUMENT P.K. WASHER  
 ON SURFACE - BELOW 2" BELOW SURFACE  
 LEFT - ℄ PAV'T. - RIGHT 9.8' RT. & PAVT.  
 \_\_\_\_\_ TO \_\_\_\_\_ EDGE PAVEMENT  
 S.L.M. \_\_\_\_\_



P.I. Δ = 9°33'00" Lt. Plan & Mens.

180 + 67.52

REF: SEE 6/25/80 TIES

County Ottawa S.R. #163

Date 6/25/80

Township ERIE

Weather sunny-hot-humid

Section S.E. 1/4 Sec. 36

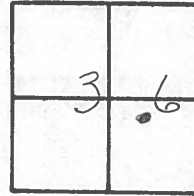
Temp. 81°

TZN, R16

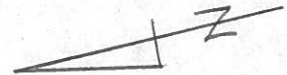
Personnel CRONIN SCHNEIDER

RIPPLE MOSSER

GEYMAN BARBOUR



#122



P.I

$\Delta = 9^{\circ}33'00''$  Lt. Plan & Meas

180+67.52

set P.K. & Washer - Used

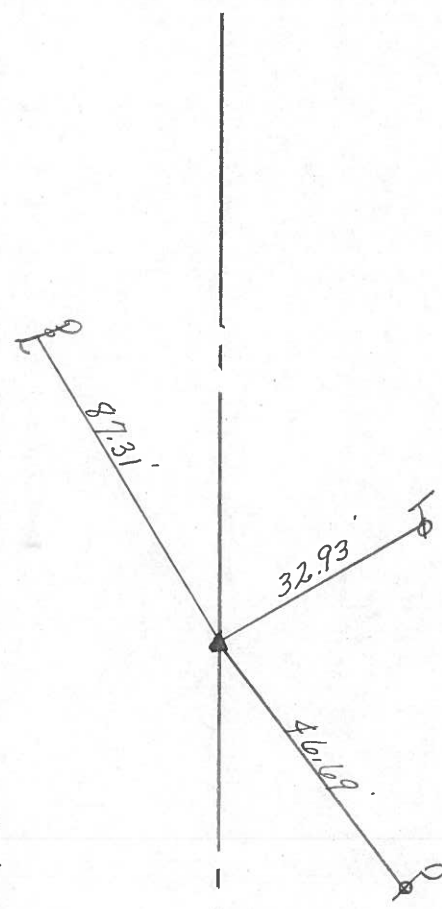
I. Pipe a P.I. Sta. 170+71.70

& Conc. B/w Monuments @ P.T.

Sta. 175+37.21 for alignment. Point is

2.5' Lt. of Rt. edge of pavement. Also

used measurement



S.P. #163

PERSONNEL TITLE PERSONNEL TITLE

COUNTY Ottawa DATE 3-27-72

S. R. 163 WEATHER Fair

SEC. 36 & 6 TEMP. 40°

DESCRIPTION Erie & Portage Twp.

JOB NO.

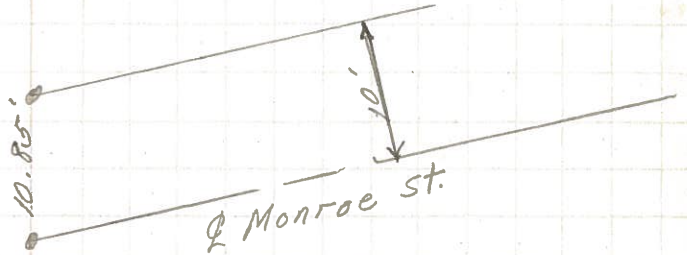
LEFT

CENTER LINE

RIGHT

223 + 47.15

124



did not find

P.I.

205 + 14.24

$\Delta = 7^{\circ} 57' 30''$  Rt.

124

123

$\Delta$

did not find

194 + 13.3

123



P.I.

180 + 67.52

$\Delta = 9^{\circ} 33'$  Lt.

122

$\Delta$

did not find