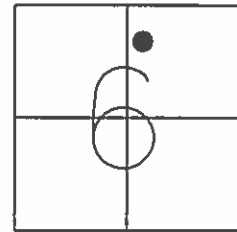


O.D.O.T. DISTRICT 2 SURVEY OFFICE (USE ONLY)

PERSONNEL	REFERENCE NO.	<u>125</u>	SHEET	<u>1</u>	OF	<u>22</u>
NOTES	DATE	<u>5/17/89</u>	ROUTE	<u>SR 163</u>		
H.C.	WEATHER	<u>SUNNY</u>	COUNTY	<u>OTTAWA</u>		
R.C.	TEMP.	<u>67°</u>	TOWNSHIP	<u>PORTAGE</u>		
			SECTION	<u>6</u>		
				<u>T 6 N</u>	<u>R 17 E</u>	

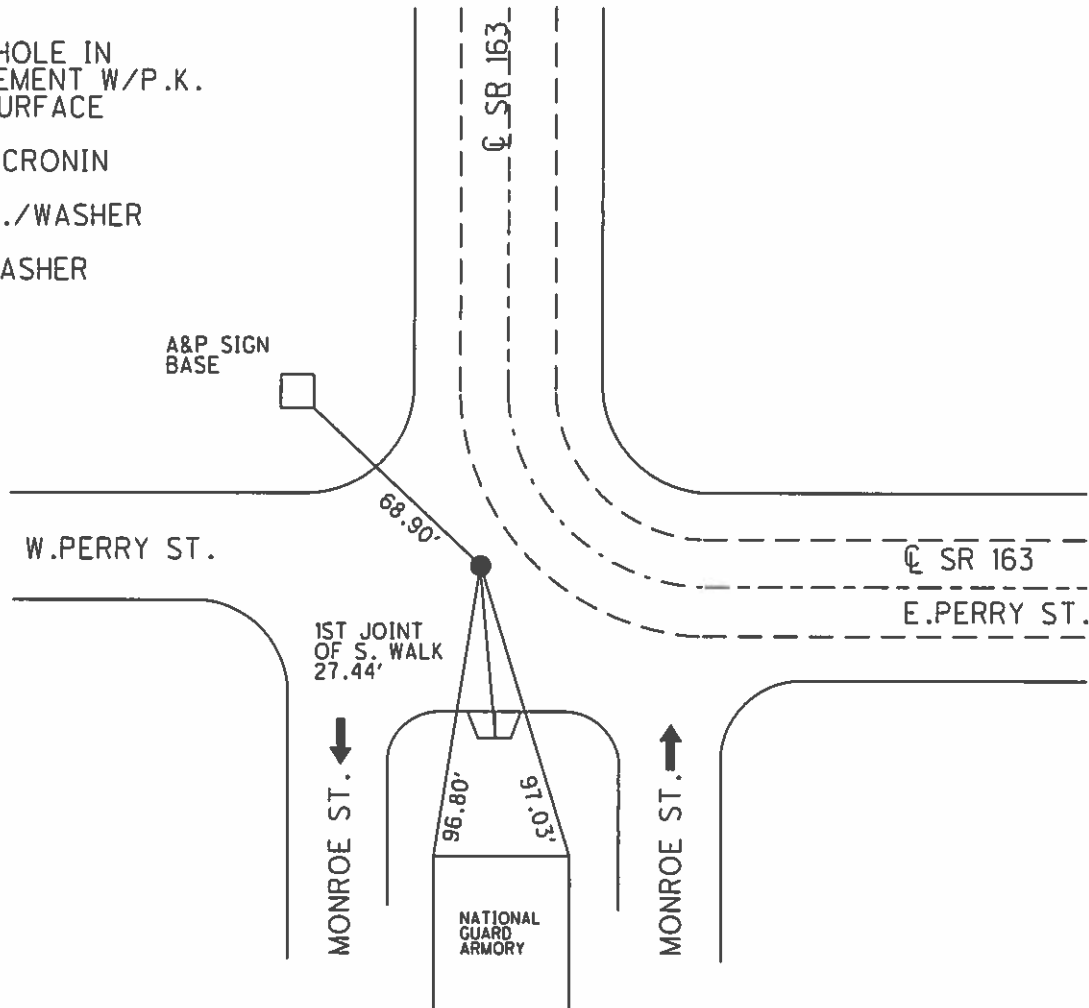
TYPE MONUMENT P.K./WASHER
 ON SURFACE - ~~BELOW~~ ON
 LEFT - CL PAV'T - RIGHT -
- TO - EDGE PAVEMENT
 S.L.M. 1334+78.4
 GRID: NORTHING: - EASTING: -



RECORD:
 STA. 0+00
 FD MON.BOX W/IPIN
 5/27/54, SCOTT
 2/26/58

FD DRILL HOLE IN
 CONC.PAVEMENT W/P.K.
 NAIL AT SURFACE
 3/28/72
 6/25/80, CRONIN

RESET P.K./WASHER
 6/6/74
 FD P.K./WASHER
 4/27/78



County Ottawa S.R. #163

(21)

Date 6/25/80

9/13/85

Township Portage

Weather sunny-hot-humid

Section City of Port Clinton

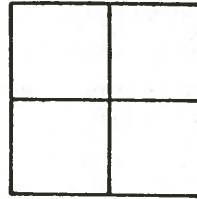
Temp. 83°

T1N, R1E

Personnel CRONIN ✓ SCHNEIDER

PIDDLE ✓ MOSSER

GEYMAN ✓ BARBOUR ✓



125

PERRY Street

drill hole
in conc.
Pavement
P.K. on
surface



10'

1327.93 Meas.
1327.65 Rec. } wedekind }
P.L.S.

conc. walk (Parapet)

30.64'

19.40
Plumb

All ties are 't' cuts

14.80
Plumb

conc. walk (Parapet)

P.O.T.

478.22' sly of P.I. of Monroe
cut 't' in conc approach
to Portage River Bridge

67°09' E of Survey

E of Monroe Street (Original) 478.22'

223+36.30

Q.D.O.T. DISTRICT 2 SURVEY OFFICE

Sht. 1 of 8

County Ottawa S.R. # 163

Date 6/25/80

Township Portage

Weather sunny-hot-humid

Section City of Port Clinton

Temp. 83°

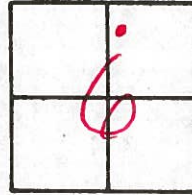
6 T1N, R17E

Personnel CRONIN SCHNEIDER

RIFFLE MOSSER

GEYMAN BARBOUR

SLM 1334+78.4



N 6 17 E

125

9-13-85

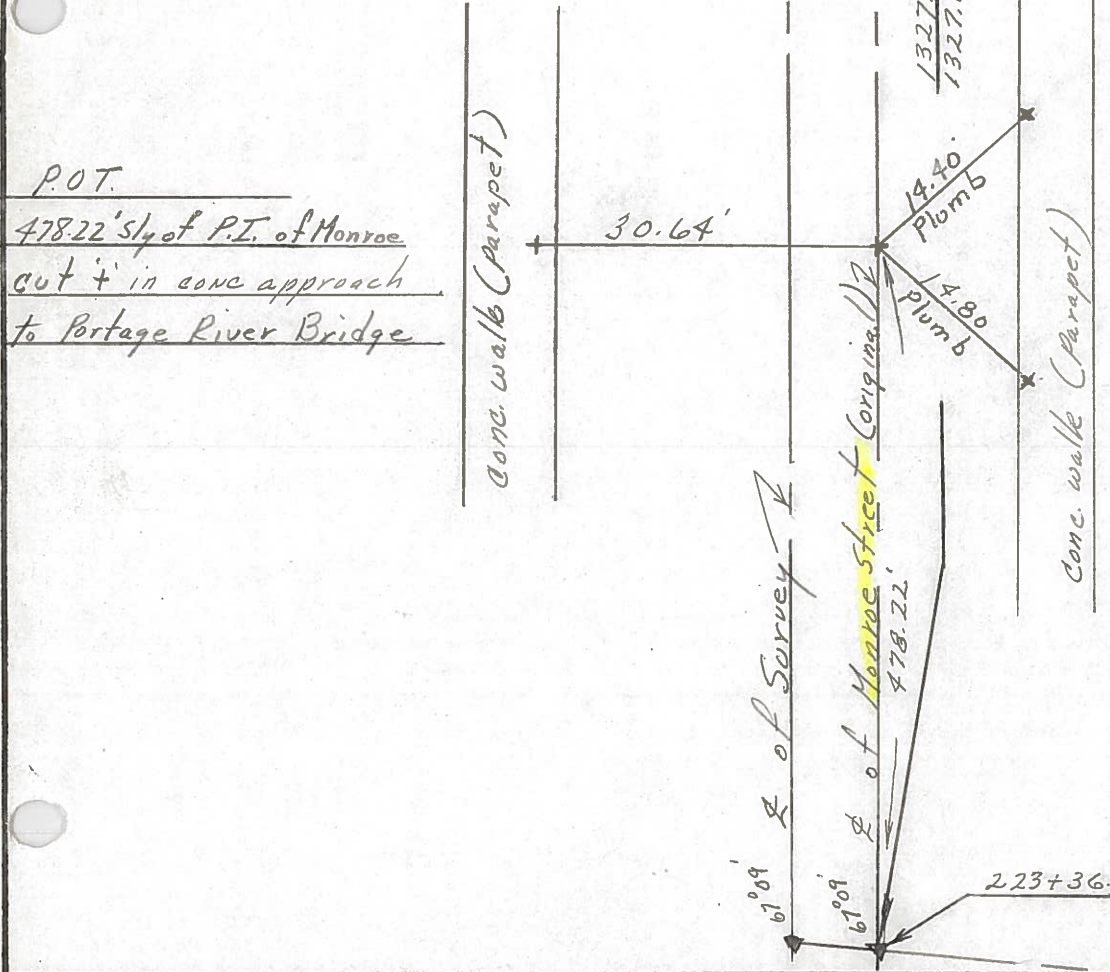
2 PERRY STREET

drill hole
in conc.
Pavement
P.K. on
surface



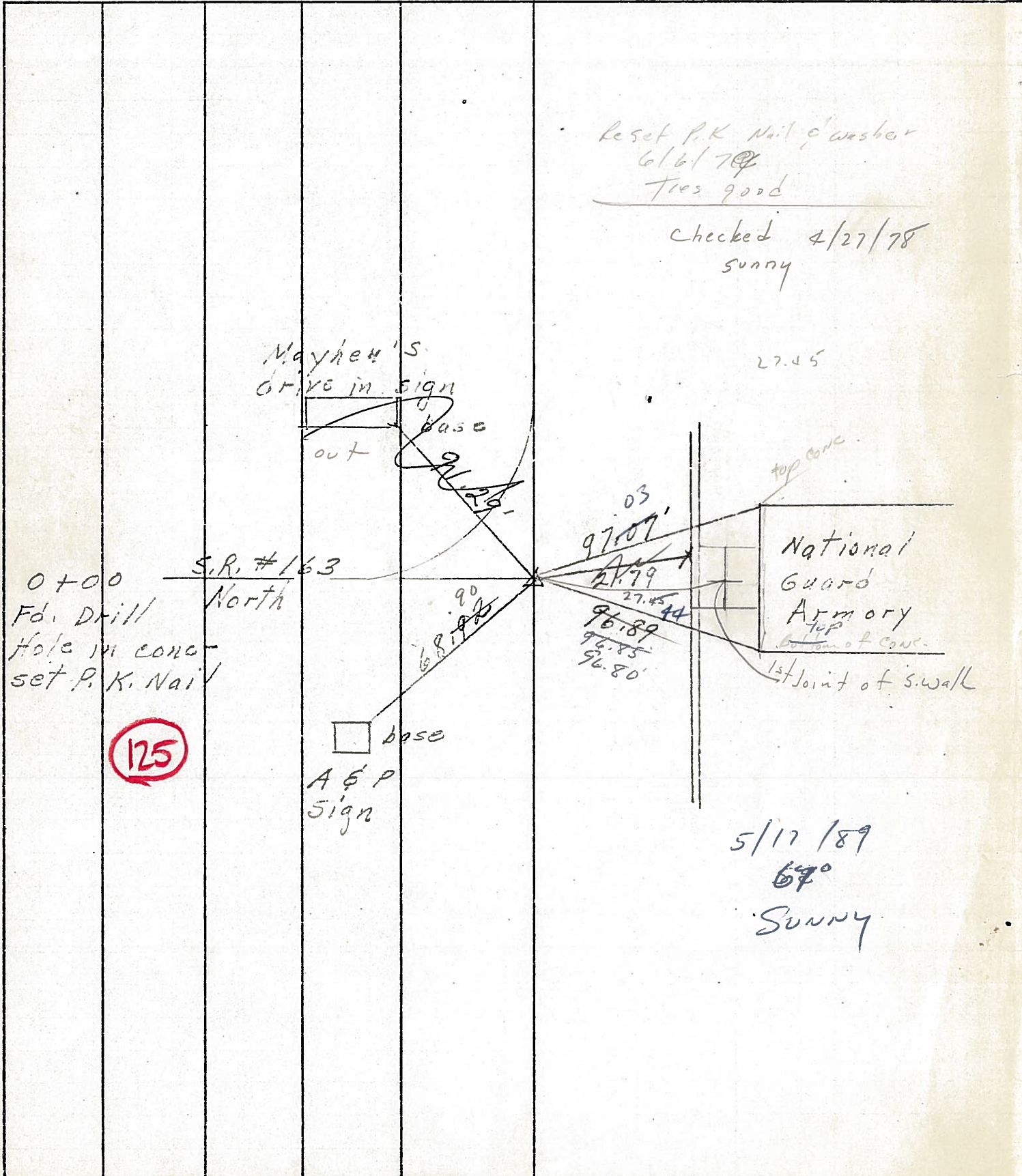
P.O.T.
478.22' sly of P.I. of Monroe
cut + in conc approach
to Portage River Bridge

All ties are + cuts



PERSONNEL	TITLE	PERSONNEL	TITLE	COUNTY	DATE
				Ottawa	3-28-72
				S. R. 163	WEATHER
				SEC. Port Clinton	TEMP.

DESCRIPTION	LEFT	CENTER LINE	RIGHT	JOB NO.
-------------	------	-------------	-------	---------



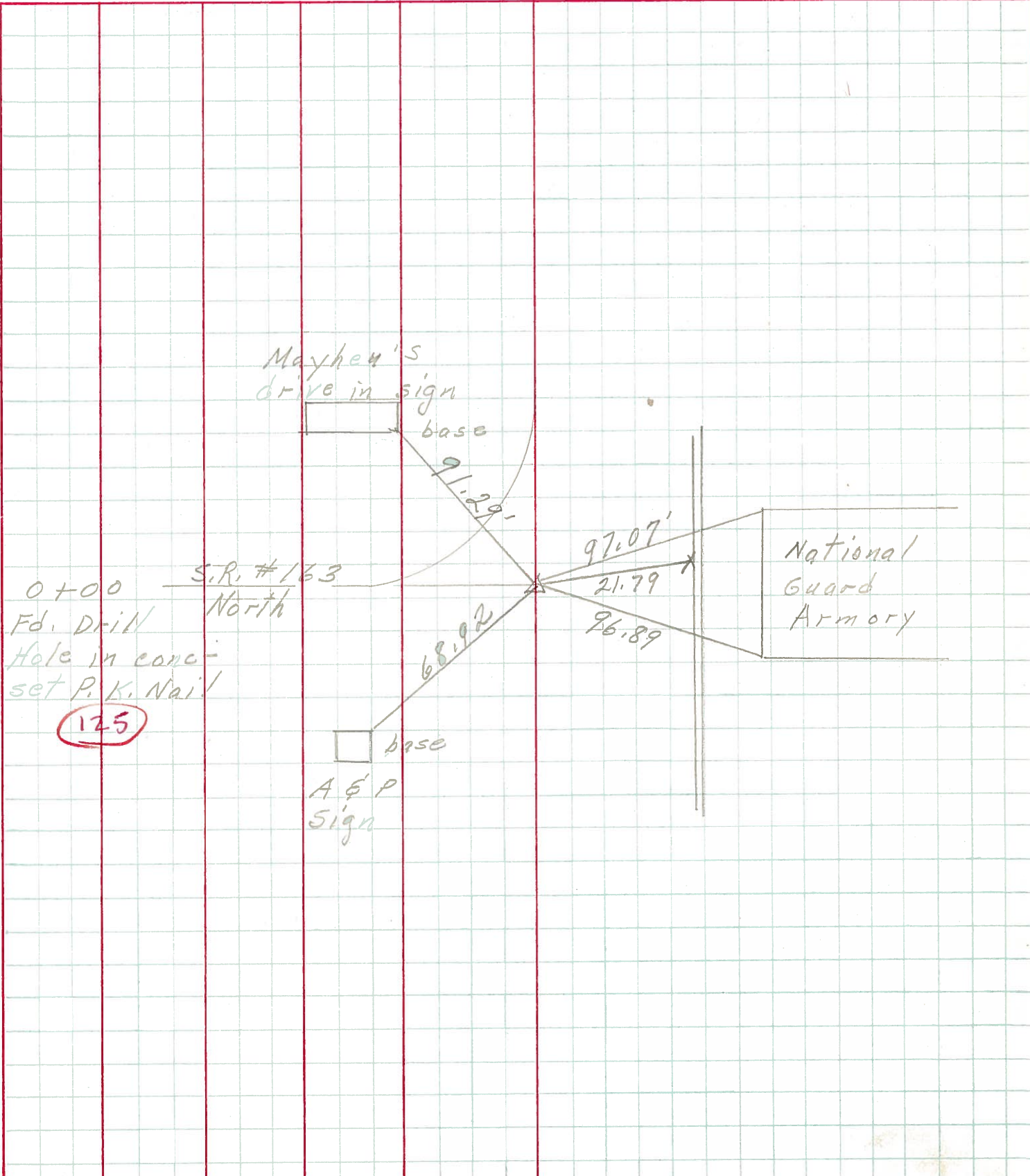
PERSONNEL TITLE PERSONNEL TITLE

COUNTY Ottawa DATE 3-28-72

S. R. 163 WEATHER _____

SEC. Port Clinton TEMP. _____

DESCRIPTION LEFT CENTER LINE RIGHT JOB NO. _____



PERSONNEL TITLE PERSONNEL TITLE

COUNTY Ottawa DATE 2/26/58

S. R. #2 163 WEATHER

SEC. Port Clinton TEMP.

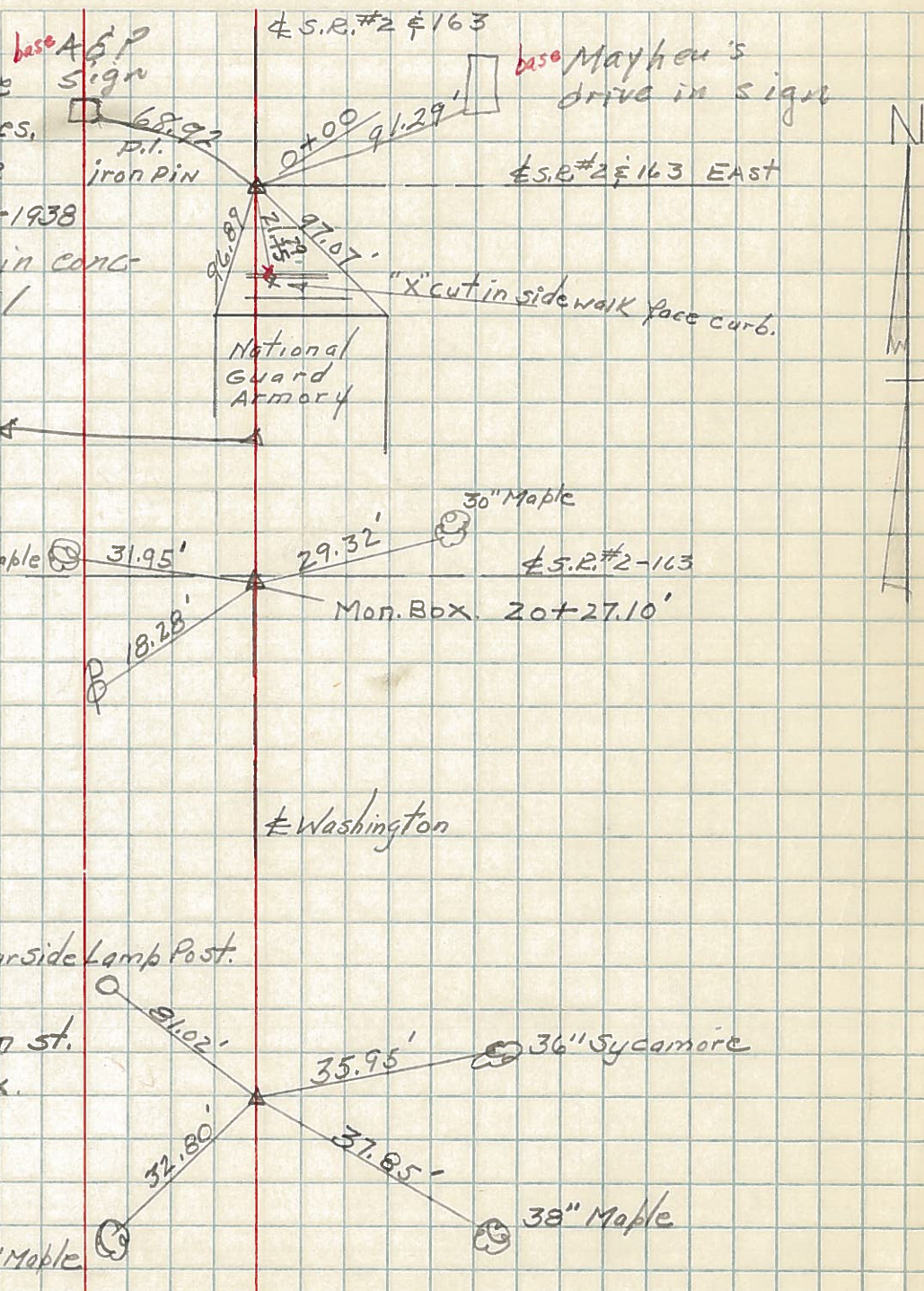
DESCRIPTION LEFT CENTER LINE RIGHT JOB NO.

Note:
 These Points are ^{base A&P sign}
 Not on \pm of Pres.
 Part S.R.#2 due
 To Relocation-1938
 Fd. drill Hole in conc
 set P.K. Nail

\pm S.R.#2 \pm 163
 base Mayhew's
 drive in sign
 \pm S.R.#2 \pm 163 EAST

125

2 see sheet 1A



PERSONNEL TITLE PERSONNEL TITLE

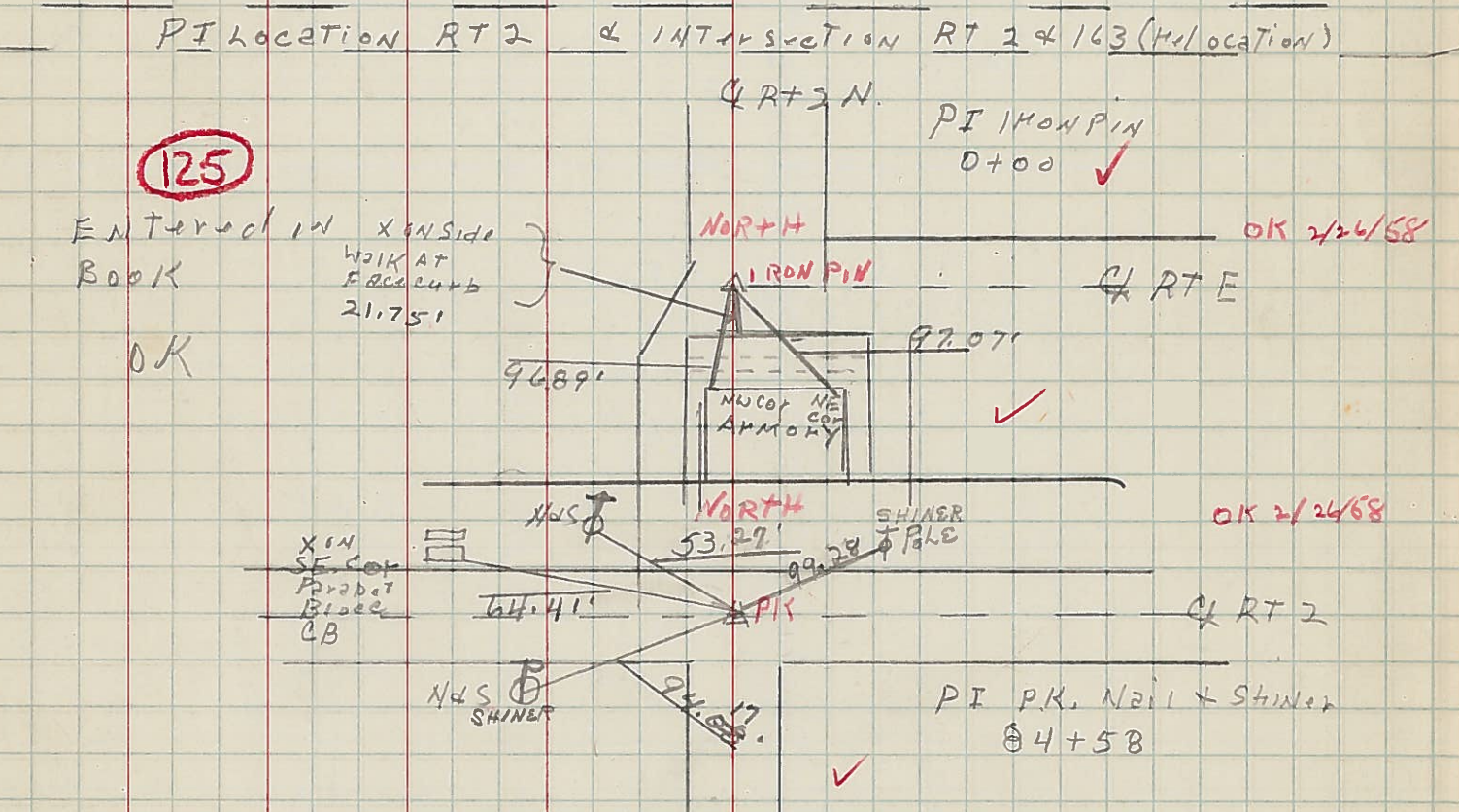
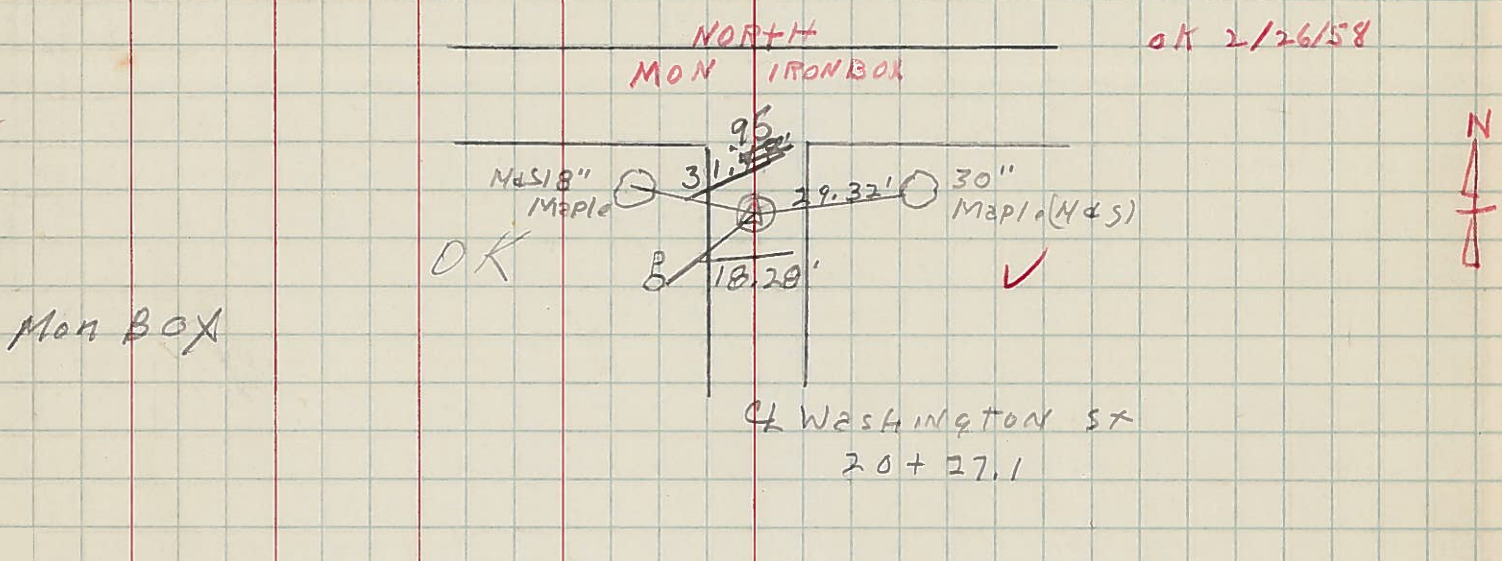
COUNTY OTTAWA DATE 5/27/54

same S. R. 2 WEATHER clear

SEC. CITY OF PT CLINTON TEMP.

DESCRIPTION Monument location LEFT CENTER LINE RIGHT JOB NO.

3



All Mon. I. Pins set in concrete w/metal box & cover.

RT 163