

O.D.O.T. DISTRICT 2 SURVEY OFFICE (USE ONLY)

PERSONNEL

REFERENCE NO. 126 I

SHEET 19 OF 27

NOTES RHOADES DATE 9/17/18

ROUTE SR 163

H.C. O'DONNELL WEATHER CLOUDY

COUNTY OTTAWA

R.C. RHOADES TEMP. 70°

TOWNSHIP PORTAGE

DWG BY NIESE PID 107919

SECTION 4

T 6 N R 17 E

TYPE MONUMENT MONBOX W/1" IPIN

ON SURFACE - ~~BELOW~~ ON

OFFSET ☐ PAVEMENT ON LT : RT

- TO - EDGE PAVEMENT

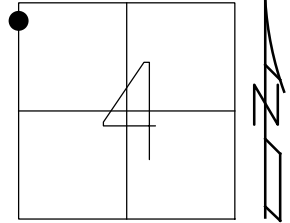
STATION: 1416+62.40

HORZ. DATUM: NAD83(2011)

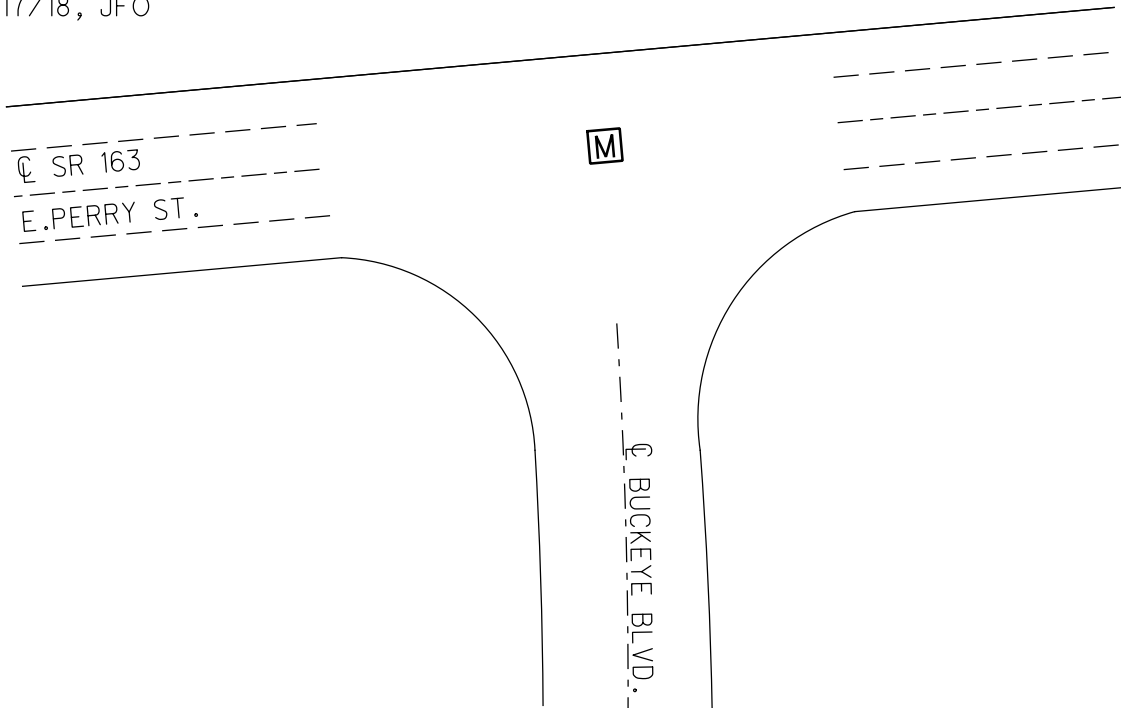
GEOID: NAVD88 2012A

GRID: NORTHING: 673594.064

EASTING: 1855365.837



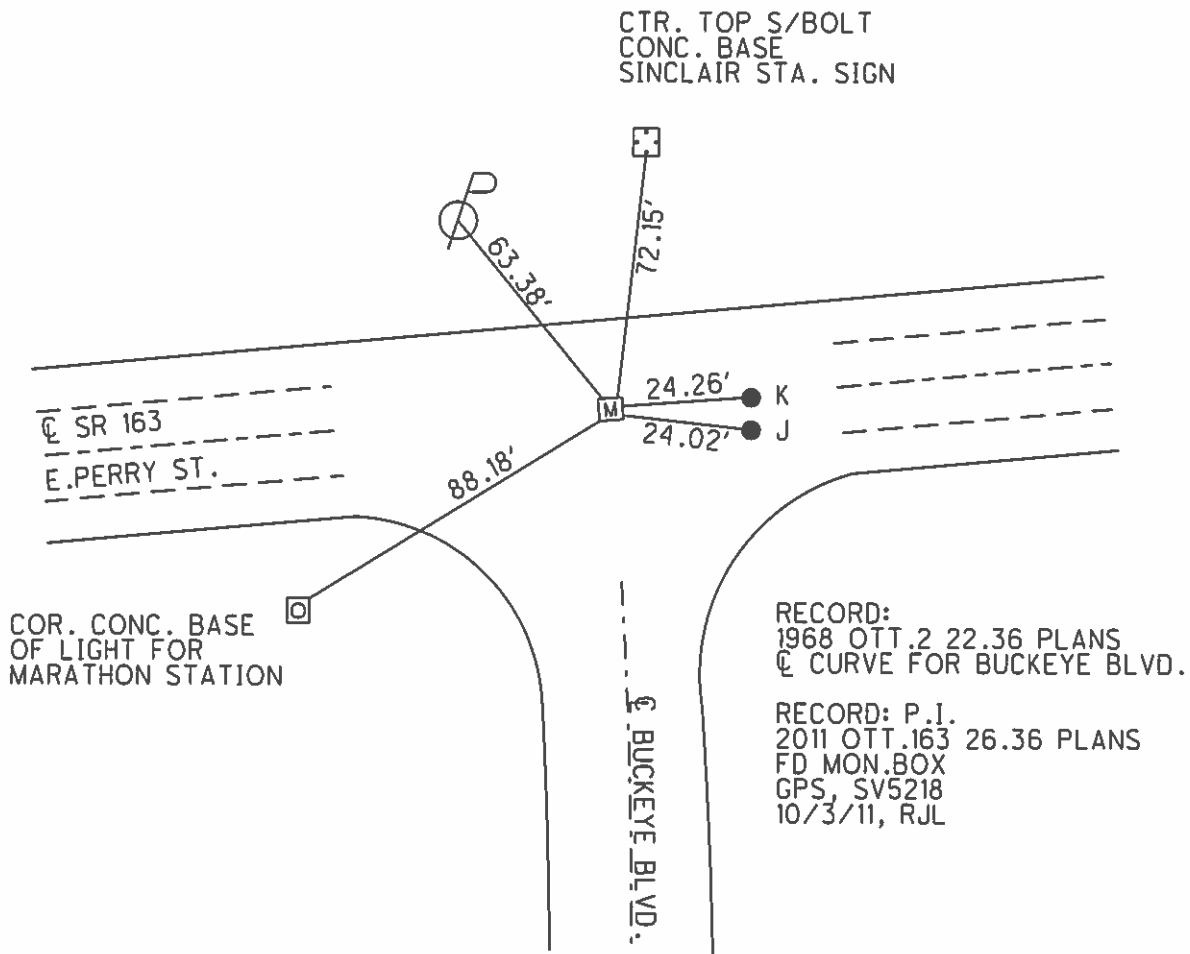
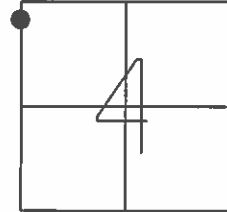
RECORD: P.I.
STA.82+26.11
1968 OTT.2 22.36 PLANS
☐ CURVE FOR BUCKEYE BLVD
2011 OTT.163 26.36 PLANS
FD MONBOX
SV5218
10/3/11, RJL
FD MONBOX
W/ 1" IPIN
REFL126
9/17/18, JFO



O.D.O.T. DISTRICT 2 SURVEY OFFICE (USE ONLY)

PERSONNEL	REFERENCE NO.	<u>126 I</u>	SHEET	<u>14</u>	OF	<u>22</u>
NOTES - _____	DATE	<u>1968</u>	ROUTE	<u>SR 163</u>		
H.C. - _____	WEATHER	<u>-</u>	COUNTY	<u>OTTAWA</u>		
R.C. - _____	TEMP.	<u>-</u>	TOWNSHIP	<u>PORTAGE</u>		
_____			SECTION	<u>4</u>		
_____			T <u>6</u> N	R <u>17</u> E		

TYPE MONUMENT MON.BOX
 ON SURFACE - ~~BELOW~~ ON
 LEFT - Q PAV'T - RIGHT ON
- TO - EDGE PAVEMENT
 S.L.M. 1416+62.40, 82+26.11 = OTT.2 22.36 PLANS
 GRID: NORTHING: 673594.045 EASTING: 1855365.705



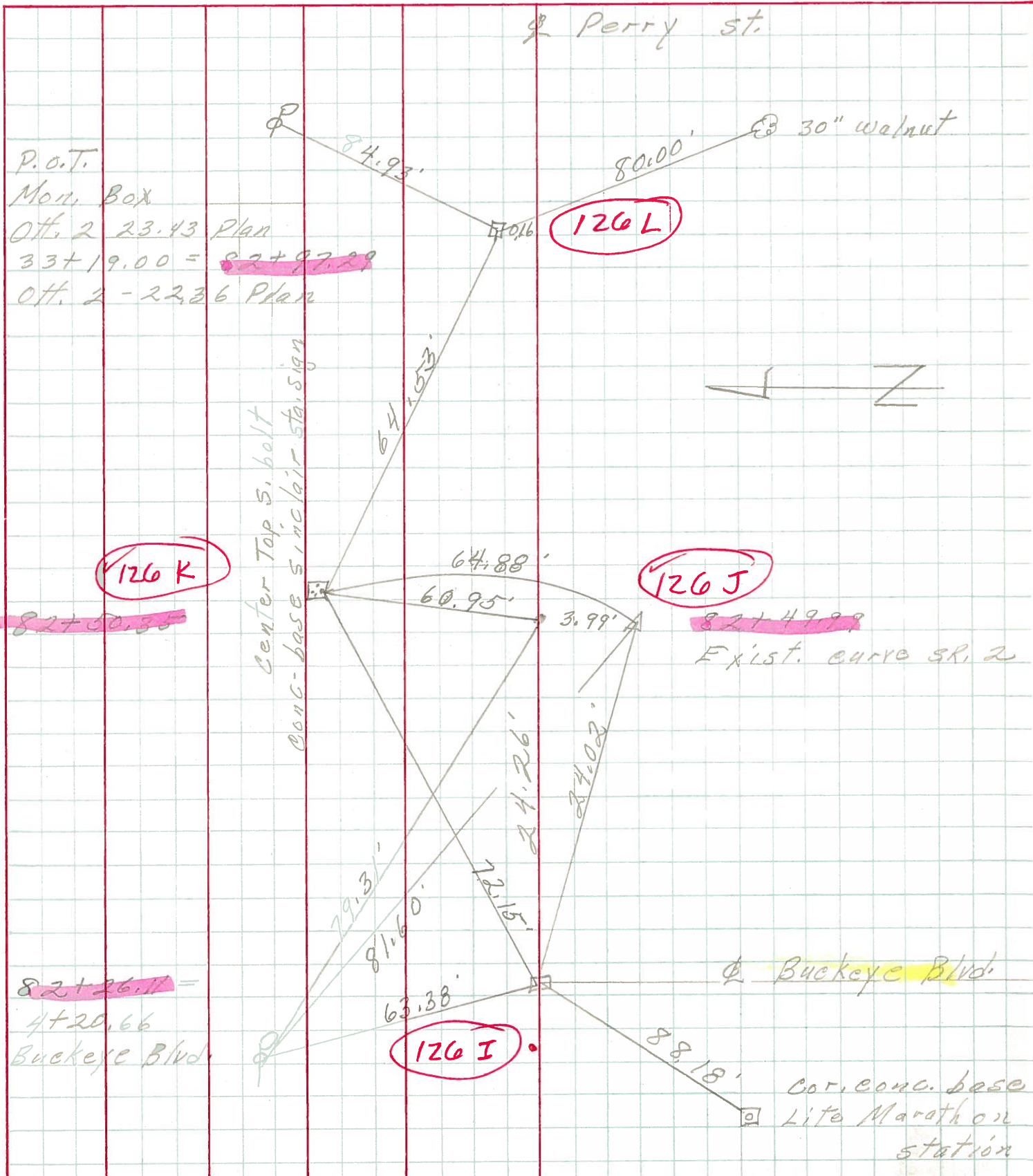
PERSONNEL TITLE PERSONNEL TITLE

COUNTY Ottawa DATE 1968

S. R. 163 WEATHER

SEC. 22.36 TEMP.

DESCRIPTION Port Clinton JOB NO.



P.O.T.
 Mon. Box
 Ott. 2 23.43 Plan
 $33+19.00 = 82+97.29$
 Ott. 2 - 22.36 Plan

126 K

126 L

126 J

126 I

$82+49.99$
 Exist. curve SR, 2

$82+26.11 =$
 $4+20.66$
 Buckeye Blvd.

Buckeye Blvd.
 Cor. conc. base
 Lite Marathon
 station