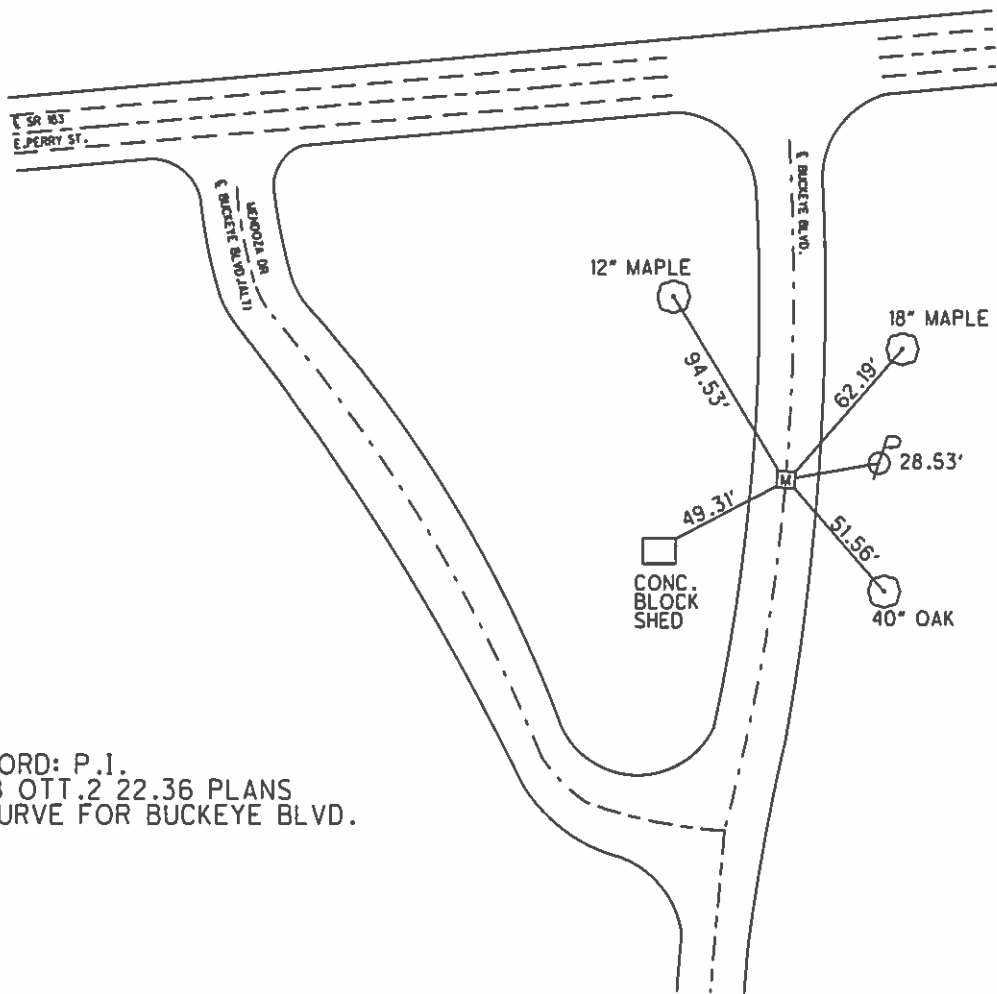
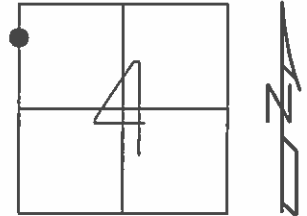


O.D.O.T. DISTRICT 2 SURVEY OFFICE (USE ONLY)

PERSONNEL	REFERENCE NO.	<u>126 1A</u>	SHEET	<u>18</u>	OF	<u>22</u>
NOTES	DATE	<u>1968</u>	ROUTE	<u>SR 163</u>		
H.C.	WEATHER	<u>-</u>	COUNTY	<u>OTTAWA</u>		
R.C.	TEMP.	<u>-</u>	TOWNSHIP	<u>PORTAGE</u>		
			SECTION	<u>4</u>		
			T	<u>6</u>	N	R
				<u>17</u>	E	

TYPE MONUMENT MON.BOX
 ON SURFACE - ~~BELOW~~ ON
 LEFT - Q PAV'T - RIGHT ON
- TO - EDGE PAVEMENT
 S.L.M. 6+22.51 = OTT.2 22.36 PLANS
 GRID: NORTHING: - EASTING: -



RECORD: P.1.
 1968 OTT.2 22.36 PLANS
 Q CURVE FOR BUCKEYE BLVD.

PERSONNEL TITLE PERSONNEL TITLE

COUNTY Ottawa DATE 1968

S. R. Buckeye Blvd. WEATHER

SEC. 22.36 TEMP.

DESCRIPTION Port Clinton

JOB NO.

LEFT

CENTER LINE

RIGHT

§ Buckeye Blvd.

✓ 126 IA.

P.I. Const of R/W
6 + 22.57

Conc.
Block shed



✓ 126 IB

P.O.T.
10 + 63.83

steel sign post
putt putt in

Conc-block
Bldg.
carry-out

Exist. old S.R. 2
curve

74.97'

82.66'

77.38'

82.49'

33.04'

73.69'

84.46'

Top Foundation

Car. & Pon't
Garage
Showroom

Top conc.
cor. sign base

Conc. cor. Appro-
slab to Garage

