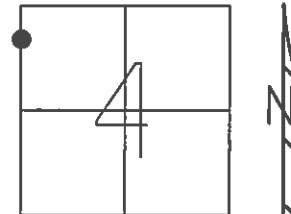


O.D.O.T. DISTRICT 2 SURVEY OFFICE (USE ONLY)

PERSONNEL	REFERENCE NO.	126 1B	SHEET	19	OF	22
NOTES	DATE	1968	ROUTE	SR	163	
H.C.	WEATHER	-	COUNTY	OTTAWA		
R.C.	TEMP.	-	TOWNSHIP	PORTAGE		
			SECTION	4		
			T	6	N	R 17 E

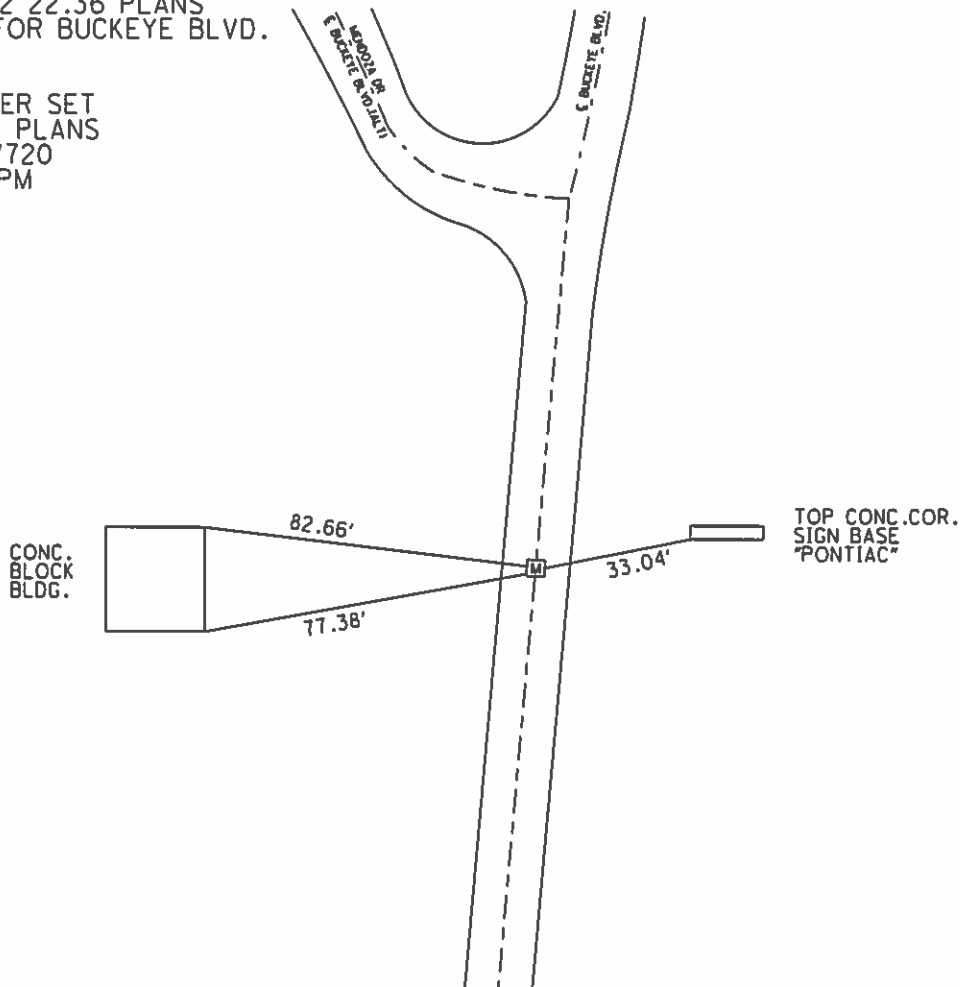
TYPE MONUMENT MON.BOX  
 ON SURFACE - ~~BELOW~~ ON  
 LEFT - Q PAV'T - RIGHT ON  
- TO - EDGE PAVEMENT  
 S.L.M. 10+63.83



GRID: NORTHING: 672952.649 EASTING: 1855369.011

RECORD: P.O.T.  
 1968 OTT.2 22.36 PLANS  
 Q CURVE FOR BUCKEYE BLVD.

RECORD:  
 MAG/WASHER SET  
 FROM 1967 PLANS  
 GPS, KMSV720  
 8/4/10, KPM



PERSONNEL TITLE PERSONNEL TITLE

COUNTY Ottawa DATE 1968

S. R. Buckeye Blvd. WEATHER

SEC. 22.36 TEMP.

DESCRIPTION Port Clinton

JOB NO.

LEFT

CENTER LINE

RIGHT

§ Buckeye Blvd.

✓ 126 IA.

P.I. Const of R/W  
6 + 22.57

Conc.  
Block shed



✓ 126 IB

P.O.T.  
10 + 63.83

steel sign post  
putt putt in

Conc-block  
Bldg.  
carry-out

Exist. old S.R. 2  
curve

74.97'

82.66'

77.38'

82.49'

33.04'

73.69'

84.46'

Top Foundation

Car. & Pon't  
Garage  
Showroom

Top conc.  
cor. sign base

Conc. cor. Appro-  
slab to Garage

12" Maple

94.53'

49.31'

18" Maple

62.19'

51.56'

40" Oak