

O.D.O.T. DISTRICT 2 SURVEY OFFICE

PERSONNEL

REFERENCE NO. 127

SHEET 1 OF 23

NOTES CHENEY

H.C. RIPPLE

R.C. BARBOUR

GEYMAN

DATE 6-08-1993

WEATHER cloudy

TEMP. 80°

ROUTE S.R.#163

COUNTY OTTAWA

TOWNSHIP Portage

SECTION 4

T6 N R 17 E

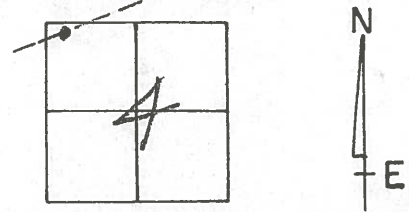
TYPE MONUMENT See Note

ON SURFACE - BELOW —

LEFT - & PAV'T. - RIGHT —

TO EDGE PAVEMENT

S.L.M. 1433 + 43 ±



Record: 10-10-1984 & 9-13-1985

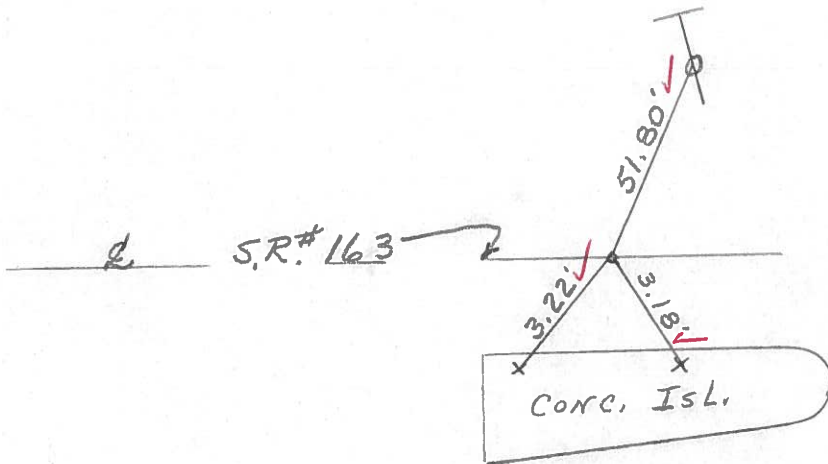
P.T. 30 + 50.12

Set Nail & Shiner

Replaced with P.K. & Washer

9-13-1985

* NOTE: All References were removed, New CONC. ISLAND, PAVEMENT WAS ALSO REMOVED AND REPLACED. All Lost. J.L.R.



FAYTHE ?
J.M.H.

Preventive Maintenance
Microsurfaced 2000
Existing Point Uncovered
Date 11-9-00

Resurfaced 1993

Q.D.O.T. DISTRICT 2 SURVEY OFFICE

SHEET 1 OF

County Ottawa S.R. #163

Date 9/13/85
10/10/84

Township Portage

Weather overcast - foggy

Section 4

Temp. 67°

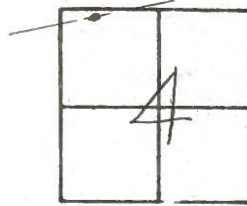
T6N, R17E

Personnel Cronin

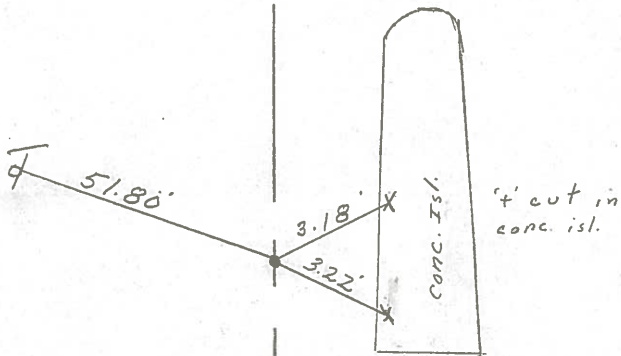
Ripple

Geyman

Barbour



(127)



P.T.
30 + 50.12
set nail & shiner
REPLACED WITH P.K. & WASHER
9/13/85

S.R. #163