

O.D.O.T. DISTRICT 2 SURVEY OFFICE (USE ONLY)

PERSONNEL

REFERENCE NO. 127 A

SHEET 25 OF 27

NOTES RHOADES DATE 9/30/20

ROUTE SR 163

H.C. AUBLE WEATHER CLOUDY

COUNTY OTTAWA

R.C. O'DONNELL TEMP. 54°

TOWNSHIP PORTAGE

SECTION 4

DWG BY NIESE PID 107919

T 6 N R 17 E

TYPE MONUMENT P.K. NAIL

ON SURFACE - ~~BELOW~~ ON

OFFSET C PAVEMENT 3.5' LT : ~~RT~~

20.0' TO LT EDGE PAVEMENT

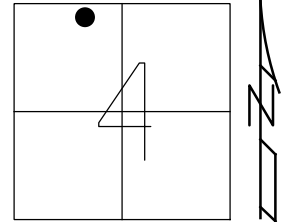
STATION: 1434+86.17

HORZ.DATUM: NAD83(2011)

GEOID: NAVD88 2012A

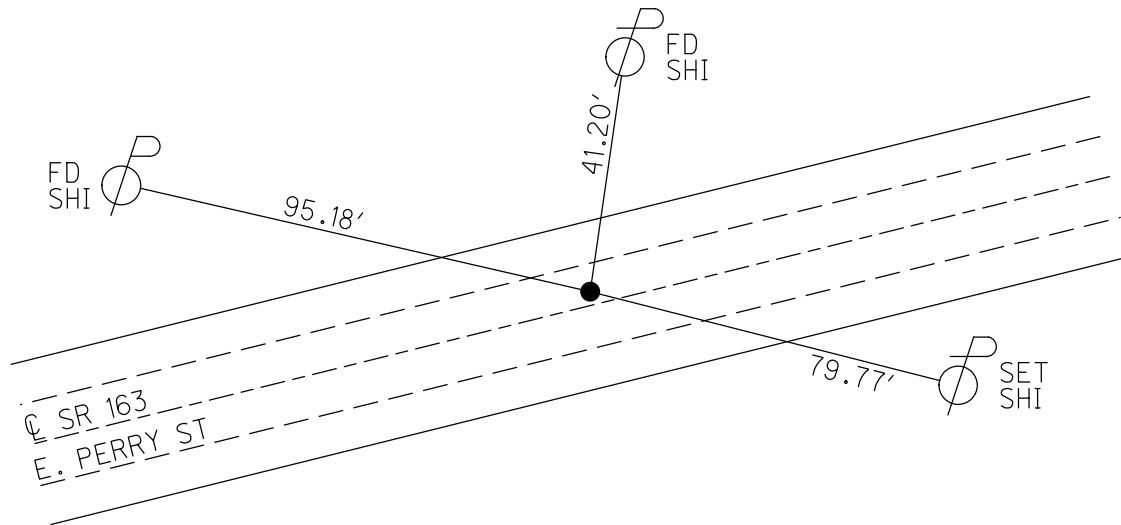
GRID: NORTHING: 673868.953

EASTING: 1857217.703



RECORD: P.I.
 STA. 34+11.45
 $\Delta = 03^\circ 17' \text{ LT}$
 $D = 01^\circ 00'$
 $R = 5729.58$
 $T = 164.21$
 $L = 328.33$
 $E = 2.35$
 SET SM.R.R.SPIKE
 10/10/84
 SET P.K./WASHER
 9/13/85

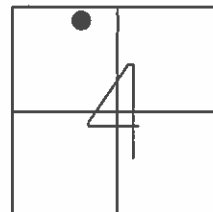
FD P.K./WASHER
 6/8/93, JLR
 SET P.K./WASHER
 7/13/93, JLR
 FD LG.R.R.SPIKE
 SV206
 9/7/12, RJL
 FD P.K. NAIL
 REFA127
 9/17/18
 9/30/20, JFO
 SET MAG/WASHER
 9/7/21, DSA



O.D.O.T. DISTRICT 2 SURVEY OFFICE (USE ONLY)

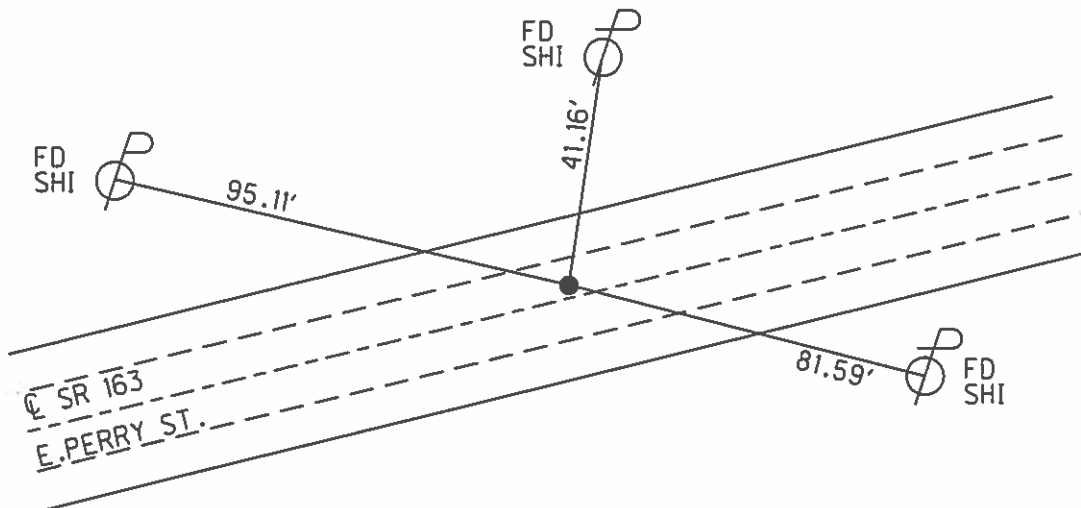
PERSONNEL _____ REFERENCE NO. 127 A SHEET 20 OF 22
 NOTES CHENEY DATE 6/8/93 ROUTE SR 163
 H.C. RIPPLE WEATHER CLOUDY COUNTY OTTAWA
 R.C. BARBOUR TEMP. 80° TOWNSHIP PORTAGE
GEYMAN SECTION 4
 T 6 N R 17 E

TYPE MONUMENT P.K./WASHER
 ON SURFACE - ~~BELOW~~ ON _____
 LEFT - Q PAV'T - ~~RIGHT~~ 3.5'
20' TOLT EDGE PAVEMENT
 S.L.M. 1435+38.04



GRID: NORTHING: 673868.978 EASTING: 1857217.521

RECORD: P.I. SET P.K./WASHER
 STA. 34+11.45 7/13/93, JLR
 $\Delta = 03^\circ 17' \text{ LT}$ FD LG.R.R.SPIKE
 SET SM.R.R.SPIKE GPS, SV206
 10/10/84 TIES REPULLED,
 SET P.K./WASHER CREW UNKNOWN
 9/13/85 9/7/12
 CURVE DATA:
 D= $01^\circ 00'$
 R= 5729.58
 T= 164.21
 L= 328.33
 E= 2.35



County Ottawa S.R. # 163

Date 9/13/85
10/10/84

Township Portage

Weather overcast - foggy

Section 4

Temp. 67°

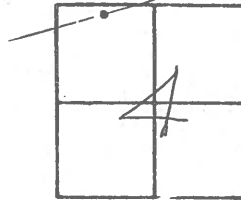
T6N, R12E

Personnel Cronin

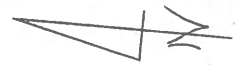
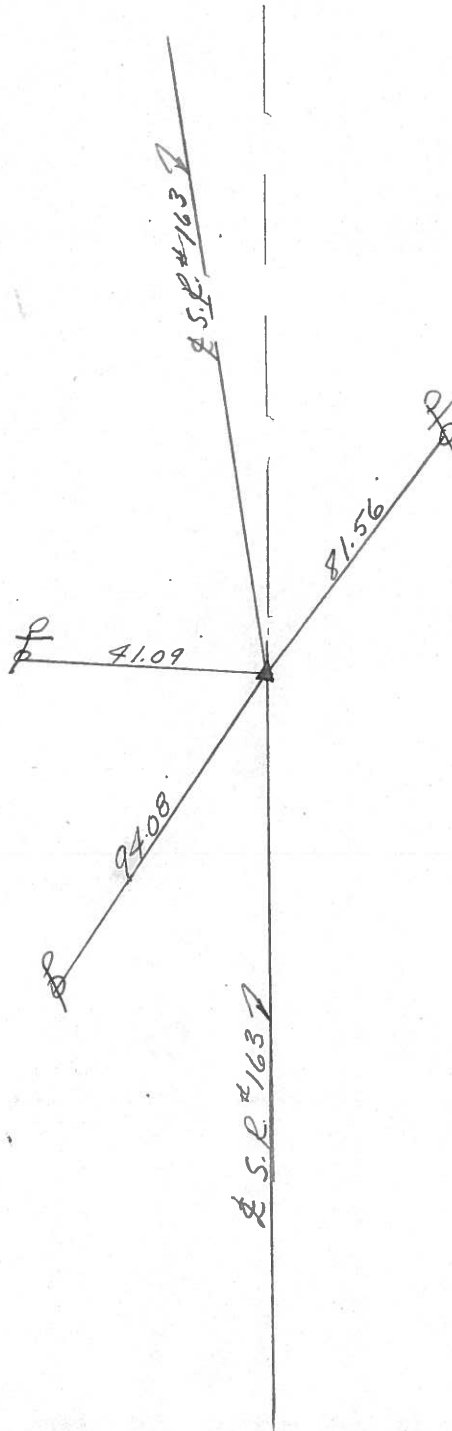
Ripple

Geyman

Barbour



127A



P.I. Δ = 03°17'00" LT

34+11.45

set small square spike

set P.K. & WASHER 9/13/85

Curve Data

D = 01°00' - R = 5729.58'

T = 164.21' - L = 328.33'

E = 2.35

PERSONNEL TITLE PERSONNEL TITLE

COUNTY OTL & W2 DATE 3/7/66

S. R. # 163 WEATHER cold

SEC. _____ TEMP. 35°

DESCRIPTION

PORT CLINTON - EAST

JOB NO. _____

	LEFT	CENTER LINE	RIGHT
49 + 32 + 49 Δ = 1° 35' LT. P.K. Nail # 104	11 11 11	11 11 11	74.57' S.E. To N.E. Cor House (Foundation (15" UP)) 76.31' S.W. To N.W. Cor. House Foundation (15" UP) 82.31' N.E. To S.W. Cor. House Foundation (3' DOWN FROM WOOD
39 + 27.07 Δ = 12° 16' RT. P.K. Nail # 103	Tied in with PORT CLINTON RE-LOCATION		91.60' S. To Shiner in 6" Twin Elm 93.32' S.E. To " " " 18" MAPLE 83.70' N.E. " " " 4" Evergreen 78.88' N.W. To S.E. COR. CONC. Hdwl. 46.40' N.W. To Shiner in Cable Pole
34 + 11.45 Δ = 3° 17' LT. P.K. Nail # 102	Tied in with PORT CLINTON RE-LOCATION		43.65' N.W. To Shiner in 6" Ash 43.58' N.W. To Shiner in 10" Ash 71.27' S.E. To Stake in Fence Line 45.01' N.E. To Shiner in Cable Pole 82.35' S.E. " " " Power Pole 77.21' S.W. " 4" Brick UP From Ground N.W. Cor. Brick House
26 + 39.98 Δ = 8° 31' LT. # 101	Tied in with PORT CLINTON RE-LOCATION		55.90' S.E. To Shiner in 6" Elm 36.21' S.S.W. To Shiner in 10" Cherry 42.87' S.W. To Shiner in 12" Cherry
12 + 13.90 Nail in Pavnt # 100	did not find		64.39' N. To 24" Ash 74.00' S.E. to N.W. COR. BRICK Chimney Moose Bldg. 87.29' S.S.E. To S.W. COR. CONC. Walk at Moose Bldg.

127C

127B

127A