

O.D.O.T. DISTRICT 2 SURVEY OFFICE (USE ONLY)

PERSONNEL

REFERENCE NO. 127 B

SHEET 26 OF 27

NOTES RHOADES
 H.C. AUBLE
 R.C. O'DONNELL

DATE 9/30/20
 WEATHER CLOUDY
 TEMP. 54°

ROUTE SR 163
 COUNTY OTTAWA
 TOWNSHIP PORTAGE
 SECTION 33
 T 7 N R 17 E

DWG BY NIESE PID 107919

TYPE MONUMENT SM.SQ.HEAD SPIKE

ON SURFACE - ~~BELOW~~ ON

OFFSET 11.0' TO LT EDGE PAVEMENT
 OFFSET 1.0' LT : ~~RT~~

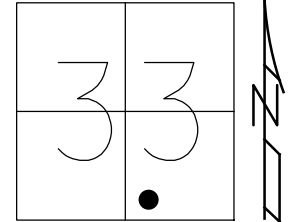
STATION: 1440+20.41

HORZ.DATUM: NAD83(2011)

GEOID: NAVD88 2012A

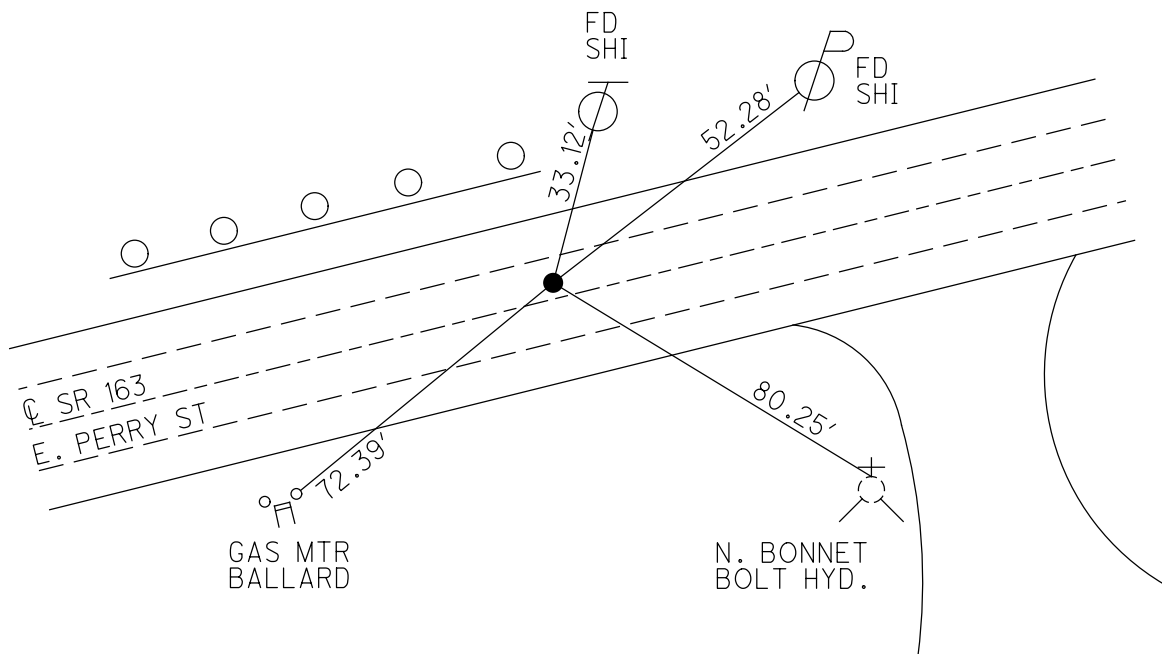
GRID: NORTHING: 674014.948

EASTING: 1857731.695



RECORD: P.I.
 STA. 39+27.07
 $\Delta = 12^\circ 16' RT$
 $D = 03^\circ 00'$
 $R = 1909.86$
 $T = 205.23$
 $L = 408.89$
 $E = 11.00'$
 SET SM.SQ.HEADED SPIKE
 10/10/84
 SET P.K./WASHER
 9/13/85

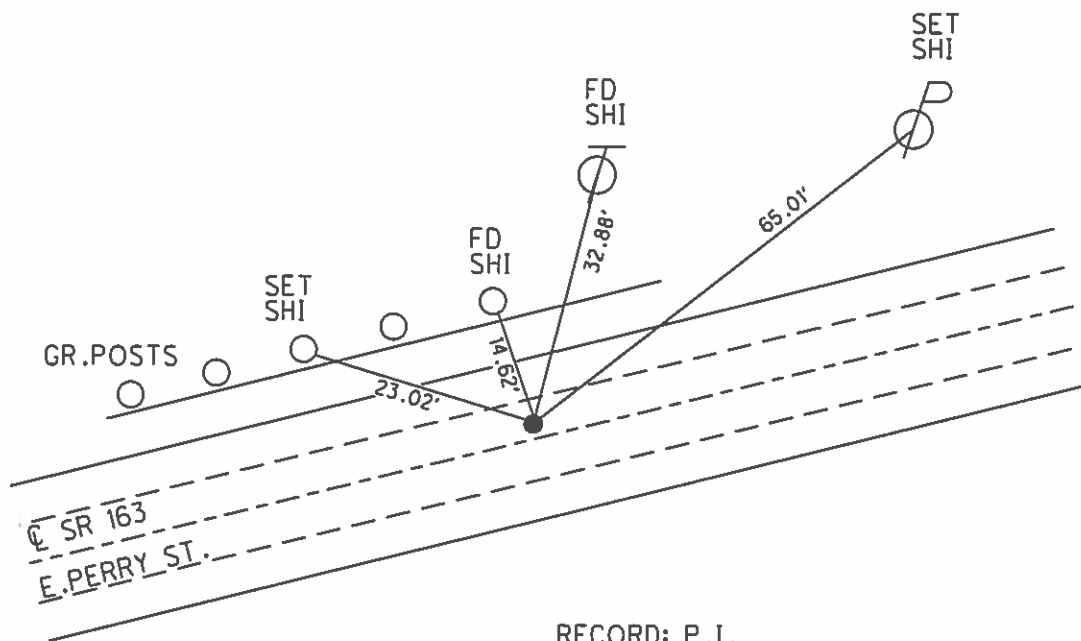
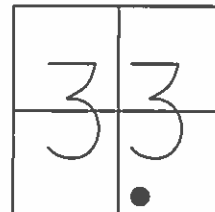
FD P.K./WASHER
 6/8/93, JLR
 SET P.K./WASHER
 7/13/93, JLR
 FD MAG NAIL
 9/7/12, RJL
 FD SM.SQ.HEADED SPIKE
 REFBC127
 9/17/18
 9/30/20, JFO
 SET MAG/WASHER
 9/7/21, DSA



O.D.O.T. DISTRICT 2 SURVEY OFFICE (USE ONLY)

PERSONNEL _____ REFERENCE NO. 127 B SHEET 21 OF 22
 NOTES CHENEY DATE 6/8/93 ROUTE SR 163
 H.C. RIPPLE WEATHER CLOUDY COUNTY OTTAWA
 R.C. BARBOUR TEMP. 80° TOWNSHIP PORTAGE
 GEYMAN _____ SECTION 33
 T 7 N R 17 E

TYPE MONUMENT P.K./WASHER
 ON SURFACE - ~~BELOW~~ ON _____
 LEFT - Q PAV'T - ~~RIGHT~~ 1.5'
11' TO LT EDGE PAVEMENT
 S.L.M. 1440+53.84
 GRID: NORTHING: 673096.027 EASTING: 1848199.514



RECORD: P.I.
 STA. 39+27.07
 $\Delta = 12^\circ 16' \text{ RT}$
 SET SM.SQ.HEADED SPIKE
 10/10/84
 SET P.K./WASHER
 9/13/85
 CURVE DATA:
 D= $03^\circ 00'$
 R= 1909.86
 T= 205.23
 L= 408.89
 E= 11.00'

SET P.K./WASHER
 7/13/93, JLR
 FD MAG NAIL
 GPS, REFA39
 UPDATED TIES
 CREW UNKNOWN
 9/7/12

Q.D.O.T. DISTRICT 2 SURVEY OFFICE

SHEET 3 OF

3

County Ottawa S.R. # 163

Date 10/10/84 ^{9 113 185}

Township Portage

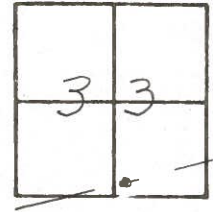
Weather overcast - foggy

Section 33

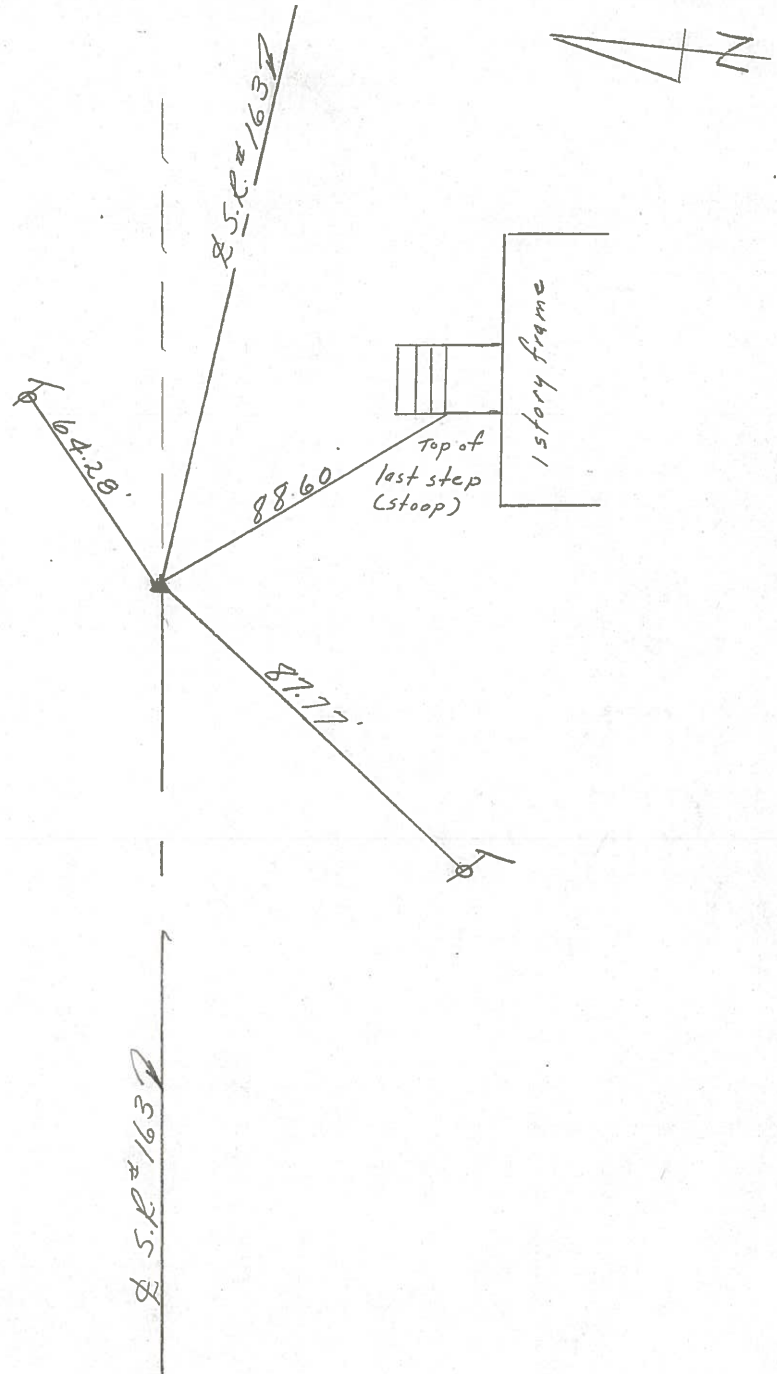
Temp. 67°

TZN, RIZE

Personnel Cronin
Ripple
Geyman
Barbour



127B



P.I Δ = 12° 16' 00" - Rt
39 + 27.07

Set small square headed spike
10' ± Lt. & Pavement
SET PK & WASHER 9/13/85

Curve Data
D = 03° 00' - R = 1909.86'
T = 205.23 - L = 408.89
E = 11.00'

PERSONNEL TITLE PERSONNEL TITLE

COUNTY OTL & W2 DATE 3/7/66

S. R. # 163 WEATHER cold

SEC. _____ TEMP. 35°

DESCRIPTION

PORT CLINTON - EAST

JOB NO. _____

	LEFT	CENTER LINE	RIGHT
49+32+49 Δ = 1°35' LT. P.K. Nail # 104	11 11 11	11 11 11	74.57' S.E. To N.E. Cor House (Foundation (15" UP)) 76.31' S.W. To N.W. Cor. House Foundation (15" UP) 82.31' N.E. To S.W. Cor. House Foundation (3' DOWN FROM WOOD
39+27.07 Δ = 12°16' RT. P.K. Nail # 103	Tied in with PORT CLINTON RE-LOCATION		91.60' S. To Shiner in 6" Twin Elm 93.32' S.E. To " " " 18" MAPLE 83.70' N.E. " " " 4" Evergreen 78.88' N.W. To S.E. COR. CONC. HDWL. 46.40' N.W. To Shiner in Cable Pole
34+11.45 Δ = 3°17' LT. P.K. Nail # 102	Tied in with PORT CLINTON RE-LOCATION		43.65' N.W. To Shiner in 6" Ash 43.58' N.W. To Shiner in 10" Ash 71.27' S.E. To Stake in Fence Line 45.01' N.E. To Shiner in Cable Pole 82.35' S.E. " " " Power Pole 77.21' S.W. " 4" Brick UP From Ground N.W. Cor. Brick House
26+39.98 Δ = 8°31' LT. # 101	Tied in with PORT CLINTON RE-LOCATION		55.90' S.E. To Shiner in 6" Elm 36.21' S.S.W. To Shiner in 10" Cherry 42.87' S.W. To Shiner in 12" Cherry
12+13.90 Nail in Pavement # 100	did not find		64.39' N. To 24" Ash 74.00' S.E. to N.W. COR. BRICK CHIMNEY MOOSE BLDG. 87.29' S.S.E. To S.W. COR. CONC. WALK AT MOOSE BLDG.

127C

127B

127A