

O.D.O.T. DISTRICT 2 SURVEY OFFICE (USE ONLY)

PERSONNEL

REFERENCE NO. 127 C

SHEET 27 OF 27

NOTES RHOADES DATE 9/30/20
 H.C. AUBLE WEATHER CLOUDY
 R.C. O'DONNELL TEMP. 54°

ROUTE SR 163
 COUNTY OTTAWA
 TOWNSHIP PORTAGE
 SECTION 33

DWG BY NIESE PID 107919

T 7 N R 17 E

TYPE MONUMENT MAG/WASHER

ON SURFACE - ~~BELOW~~ ON

OFFSET 1.0' ~~LT~~ : RT

10.0' TO RT EDGE PAVEMENT

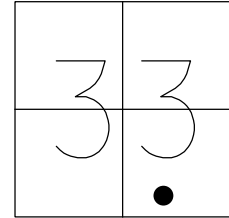
STATION: 1450+06.98

HORZ. DATUM: NAD83(2011)

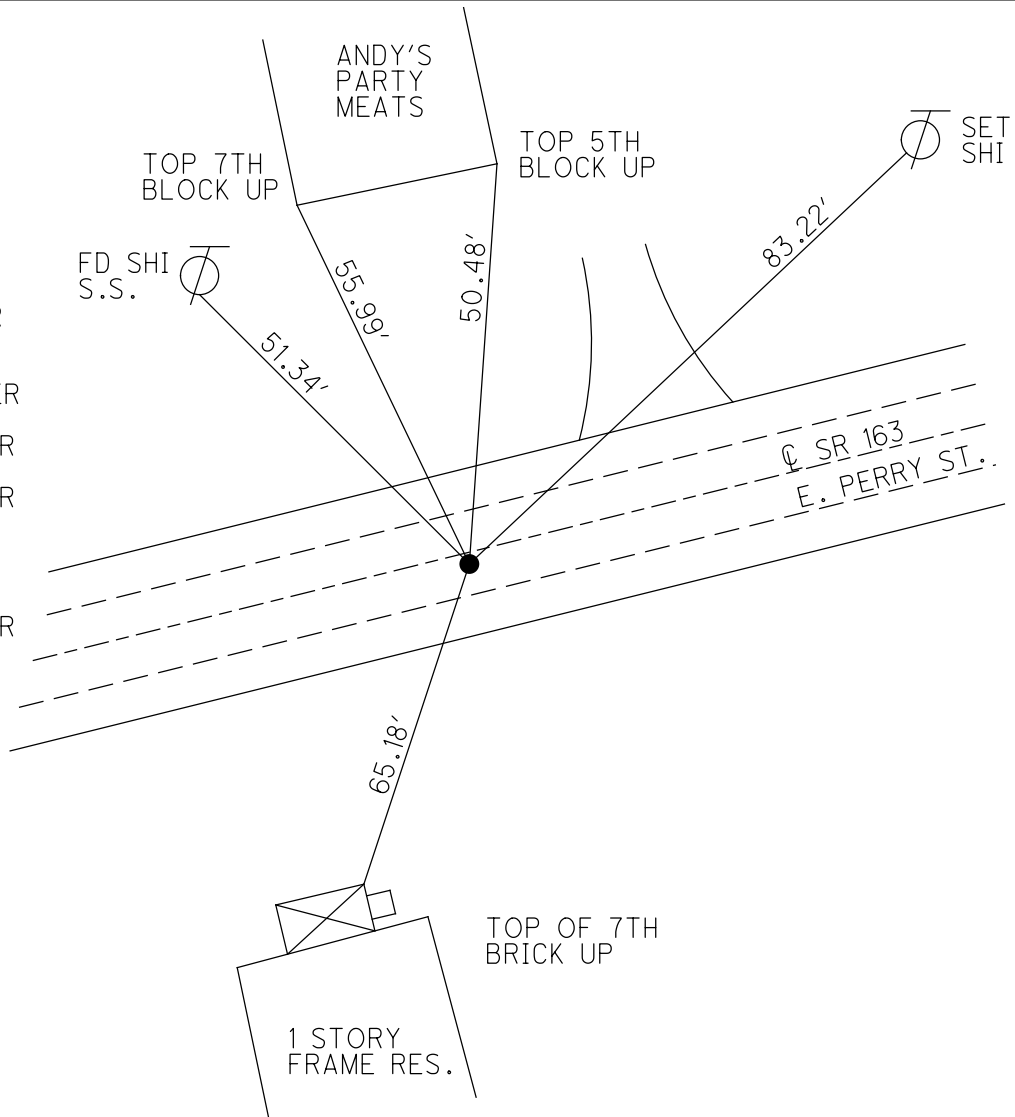
GEOID: NAVD88 2012A

GRID: NORTHING: 674092.346

EASTING: 1858716.007



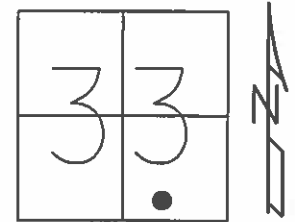
RECORD: P.I.
 STA. 49+32.49
 $\Delta = 01^\circ 35' \text{ LT}$
 $D = 0^\circ 20'$
 $R = 17188.73$
 $T = 237.51$
 $L = 475.00$
 $E = 1.64$
 FD P.K./WASHER
 10/10/84
 FD P.K./WASHER
 2" DOWN
 6/8/93, JLR
 SET P.K./WASHER
 7/13/93, JLR
 SET MAG/WASHER
 9/7/12, RJL
 SET MAG/WASHER
 9/17/18
 FD MAG/WASHER
 RECREFC127
 9/30/20, JFO
 SET MAG/WASHER
 9/7/21, DSA



O.D.O.T. DISTRICT 2 SURVEY OFFICE (USE ONLY)

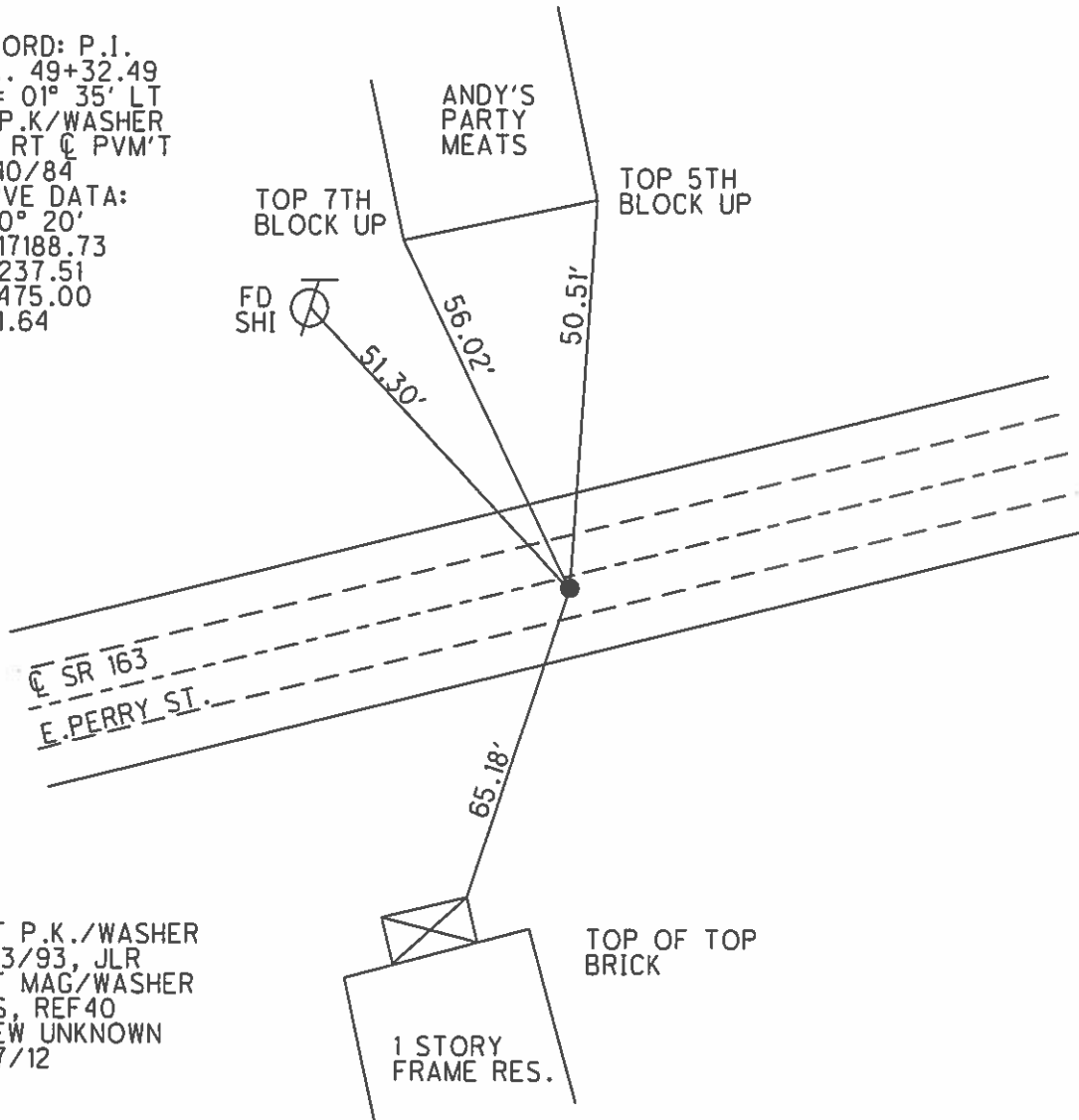
PERSONNEL _____ REFERENCE NO. 127 C SHEET 22 OF 22
 NOTES CHENEY DATE 6/8/93 ROUTE SR 163
 H.C. RIPPLE WEATHER CLOUDY COUNTY OTTAWA
 R.C. BARBOUR TEMP. 80° TOWNSHIP PORTAGE
GEYMAN SECTION 33
 T 7 N R 17 E

TYPE MONUMENT P.K./WASHER
~~ON SURFACE~~ - BELOW 2"
~~LEFT~~ - Q PAV'T - RIGHT 1.5'
10' TO RT EDGE PAVEMENT
 S.L.M. 1450+59.2



GRID: NORTHING: 674092.346 EASTING: 1858716.007

RECORD: P.I.
 STA. 49+32.49
 $\Delta = 01^\circ 35' \text{ LT}$
 FD P.K./WASHER
 1.5' RT Q PVM'T
 10/10/84
 CURVE DATA:
 $D = 0^\circ 20'$
 $R = 17188.73$
 $T = 237.51$
 $L = 475.00$
 $E = 1.64$



SET P.K./WASHER
 7/13/93, JLR
 SET MAG/WASHER
 GPS, REF40
 CREW UNKNOWN
 9/7/12

Q.D.O.T. DISTRICT 2 SURVEY OFFICE

SHEET _____ OF _____

②

County Ottawa S.R. #163

Date 10/10/84
9 113 185

Township Portage

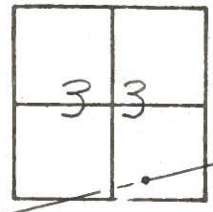
Weather overcast - foggy
SUNNY

Section 33

Temp. 67°
62°

TZN, RZE

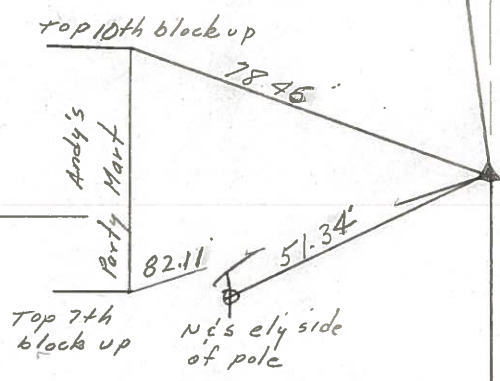
Personnel Cronin
Ripple
Geyman
Barbour



127C



P.I. Δ = 01°35'00" Lt
49 + 32.49
Fd. P.K. & washer
15' Rt. & PAUT.



Curve Data
D = 00°20' - L = 17188.73'
T = 237.51 - L = 475.00
E = 1.64

S.R. #163

PERSONNEL TITLE PERSONNEL TITLE

COUNTY OTL & W2 DATE 3/7/66

S. R. # 163 WEATHER cold

SEC. _____ TEMP. 35°

DESCRIPTION

PORT CLINTON - EAST

JOB NO. _____

LEFT	CENTER LINE	RIGHT
49 + 32 + 49 Δ = 1° 35' LT. P.K. Nail # 104	11 11 11	11 11 11
(127C)		74.57' S.E. To N.E. Cor House (Foundation (15" UP)) 76.31' S.W. To N.W. Cor. House Foundation (15" UP) 82.31' N.E. To S.W. Cor. House Foundation (3' DOWN From Wood
39 + 27.07 Δ = 12° 16' RT. P.K. Nail # 103	Tied in with PORT CLINTON RE-LOCATION	91.60' S. To Shiner in 6" Twin Elm 93.32' S.E. To " " " 18" Maple 83.70' N.E. " " " 4" Evergreen 78.88' N.W. To SE. COR. CONC. Hdwl. 46.40' N.W. To Shiner in Cable Pole
(127B)		
24 + 11.45 Δ = 3° 17' LT. P.K. Nail # 102	Tied in with PORT CLINTON RE-LOCATION	43.65' N.W. To Shiner in 6" Ash 43.58' N.W. To Shiner in 10" Ash 71.27' S.E. To Stake in Fence Line 45.01' N.E. To Shiner in Cable Pole 82.35' S.E. " " " Power Pole 77.21' S.W. " 4" Brick UP From Ground N.W. Cor. Brick House
(127A)		
26 + 39.98 Δ = 8° 31' LT. # 101	Tied in with PORT CLINTON RE-LOCATION	55.90' S.E. To Shiner in 6" Elm 36.21' S.S.W. To Shiner in 10" Cherry 42.87' S.W. To Shiner in 12" Cherry
12 + 13.90 Nail in Pavement # 100	did not find	64.39' N. To 24" Ash 74.00' S.E. to N.W. COR. BRICK Chimney Moose Bldg. 87.29' S.S.E. To S.W. COR. CONC. Walk at Moose Bldg.