

O.D.O.T. DISTRICT 2 SURVEY OFFICE (USE ONLY)

PERSONNEL

REFERENCE NO. 127 E

SHEET 2 OF 17

NOTES RHOADES

DATE 9/30/20

ROUTE SR 163

H.C. AUBLE

WEATHER CLOUDY

COUNTY OTTAWA

R.C. O'DONNELL

TEMP. 54°

TOWNSHIP PORTAGE

SECTION 33

DWG BY NIESE PID 107919

T 7 N R 17 E

TYPE MONUMENT MUSHROOM TOP 1 1/2" IPIN

~~ON SURFACE~~ - BELOW 14"

OFFSET CL PAVEMENT 31' ~~±~~ : RT

20.0' TO RT EDGE PAVEMENT

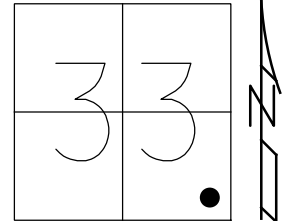
STATION: 1477+24.31

HORIZ.DATUM: NAD83(2011)

GEOID: NAVD88 2012A

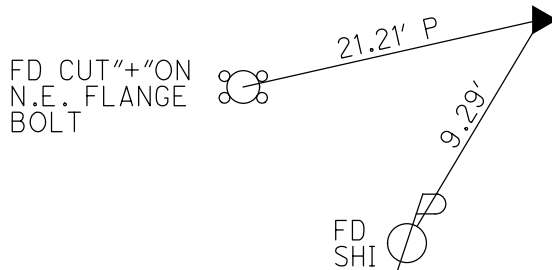
GRID: NORTHING: 674510.539

EASTING: 1861399.492



RECORD: P.I.
Δ = 10° 56' LT
STA. 76+50.91
9/20/84
9/16/85
FD MUSHROOM TOP
1 1/2" IPIN
1.0' DOWN
6/8/93, JLR
11/9/00
FD IPIN
FD MUSHROOM TOP
1 1/2" IPIN
14" DOWN
REFE127
9/17/18, JFO

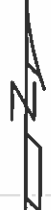
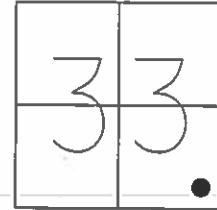
CL SR 163



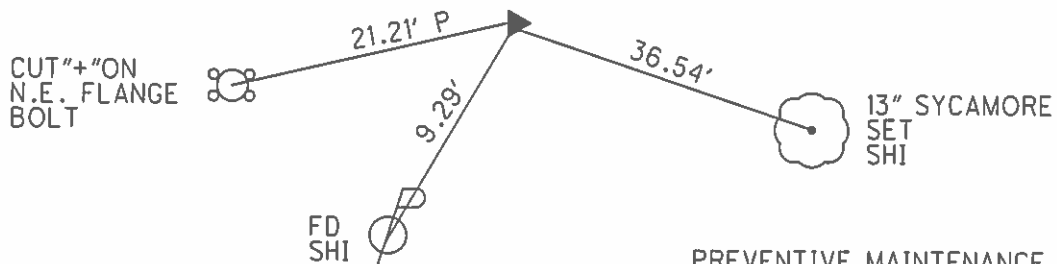
O.D.O.T. DISTRICT 2 SURVEY OFFICE (USE ONLY)

PERSONNEL _____ REFERENCE NO. 127 E SHEET 2 OF 18
 NOTES CHENEY DATE 6/08/93 ROUTE SR 163
 H.C. RIPPLE WEATHER CLOUDY COUNTY OTTAWA
 R.C. BARBOUR TEMP. 80° TOWNSHIP PORTAGE
GEYMAN SECTION 33
 T 7 N R 17 E

TYPE MONUMENT _____ MUSHROOM TOP 1 1/2" IPIN
~~ON SURFACE~~ = BELOW _____ 1'
~~LEFT~~ - C PAV'T - RIGHT _____ 31'
 _____ 20' TO RT EDGE PAVEMENT
 S.L.M. _____ 1479+47
 GRID: NORTHING: _____ EASTING: _____



RECORD: P.I.
 $\Delta = 10^\circ 56' \text{ LT}$
 STA. 76+50.91
 9/20/84, 9/16/85
 FD IPIN 20' RT EP
 32' RT C PAV'T



PREVENTIVE MAINTENANCE
 MICROSURFACED 2000
 EXISTING POINT UNCOVERED
 DATE: 11/9/2000

O.D.O.T. DISTRICT 2 SURVEY OFFICE (Use Only)

PERSONNEL _____

REFERENCE NO. 127 E

SHEET 2 OF 18

NOTES Cheney

DATE 6-08-1993

ROUTE SR 163

H.C. Ripple

WEATHER Cloudy

COUNTY OTTAWA

R.C. Barbour

TEMP. 80°

TOWNSHIP PORTAGE

Geyman

SECTION 33

T 7 N R 17 E

TYPE MONUMENT Fd. Mushroom Top 1 1/2" Iron Pin

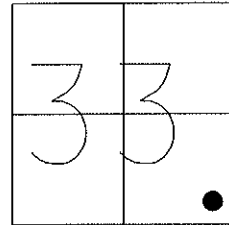
~~ON SURFACE~~ = BELOW 1' ± Deep

~~LEFT~~ - C/P AV'T - RIGHT 31'

20' TO RT. EDGE PAVEMENT

S.L.M. 1479+47

Grid: Northing: _____ Easting: _____



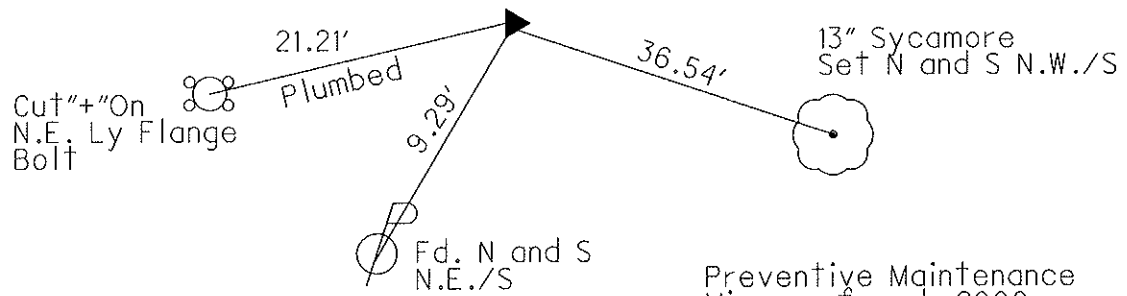
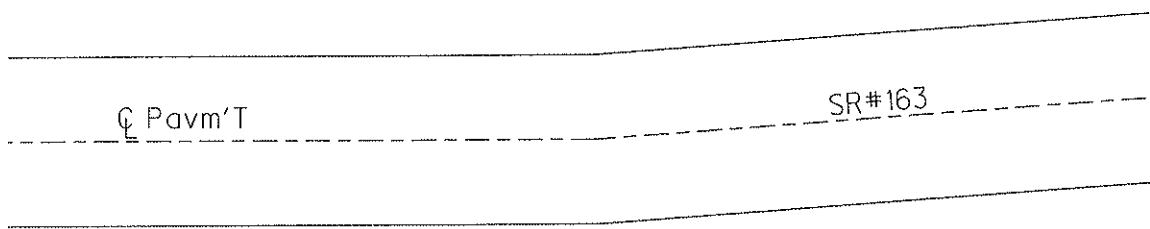
Record: 9-20-1984 and 9-16-85

P.I. Δ = 10°56' LT.- Old Notes

76+50.91

Fd. I. Pin 20' RT. E.P.

32' RT. C Pavement



Preventive Maintenance
 Microsurfaced 2000
 Existing Point Uncovered
 Date: 11-9-2000

O.D.O.T. DISTRICT 2 SURVEY OFFICE

PERSONNEL

REFERENCE NO. 127 DE SHEET 6 OF 23

NOTES CHENEY

H.C. RIPPLE

R.C. BARBOUR

GEYMAN

DATE 6-08-1993

WEATHER Cloudy

TEMP. 80°

ROUTE SR#163

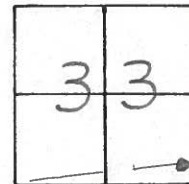
COUNTY OTTAWA

TOWNSHIP Portage

SECTION 33

T7 N R 17 E

TYPE MONUMENT Fd. Mushroom Top 1 1/2" IRON PIN
~~ON SURFACE~~ - BELOW 1'± Deep
~~LEFT - & PAV'T. - RIGHT~~ 31'
20' TO RT. EDGE PAVEMENT
 S.L.M. 1479+47



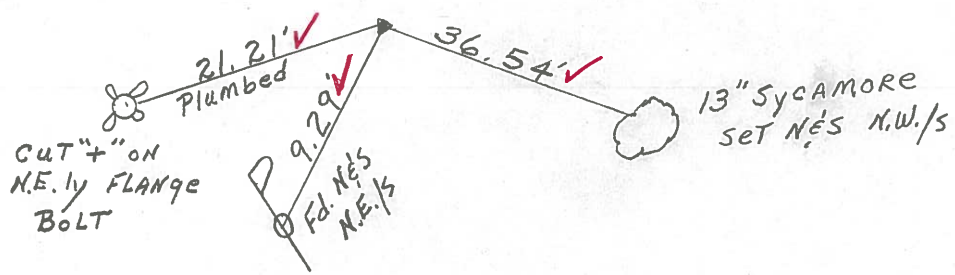
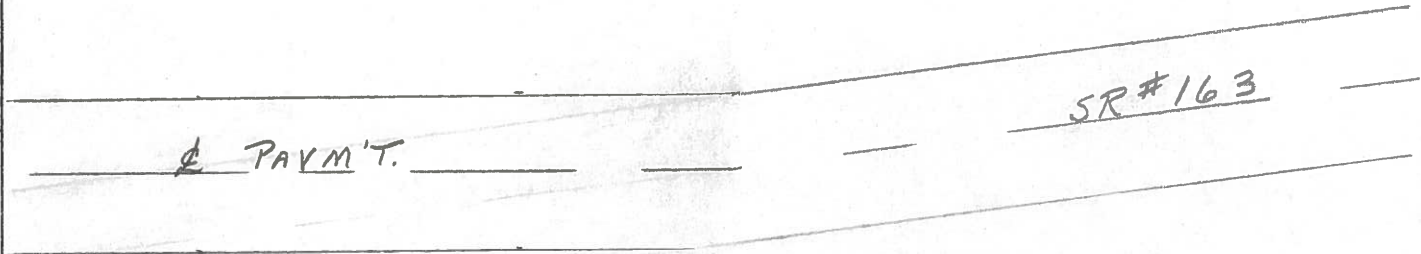
Record: 9-20-1984 & 9-16-85

P.I. Δ = 10° 56' LT. - old Notes

76+50.91

Fd. I. PIN 20' RT. EP.

32' RT. & Pavement



Preventive Maintenance
 Microsurfaced 2000
 Existing Point Uncovered
 Date 11-9-2000

O.D.O.T. DISTRICT 2 SURVEY OFFICE

PERSONNEL _____

REFERENCE NO. _____

SHEET 6 OF _____

NOTES Cronin

9/16/85

H.C. Ripple

DATE 9/20/84

ROUTE 163

R.C. Barbour

WEATHER sunny

COUNTY Ottawa

Geyman

TEMP. 64°

TOWNSHIP Portage

SECTION 33

T. 7 N R. 17 E

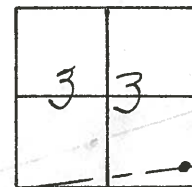
TYPE MONUMENT I. Pin

ON SURFACE - BELOW 12" below

LEFT-☉ PAV'T. - RIGHT Right

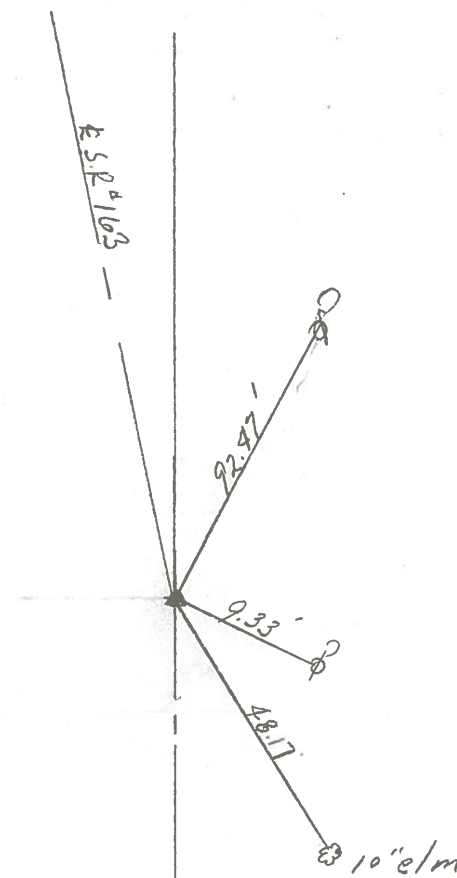
20 TO RT. EDGE PAVEMENT

S.L.M. _____



127E

P.I. - Δ = 10°56' Lt. old notes
76+50.91
Fd. I. Pin 20' Rt. Rt. E.P.
32' Rt. & Pavt.



PERSONNEL TITLE PERSONNEL TITLE

Schneider

COUNTY Ottawa

DATE 3-2-70

Mosser

S. R. 163

WEATHER Cloudy

Potts

SEC. Port Clinton-East

TEMP. 35°

DESCRIPTION

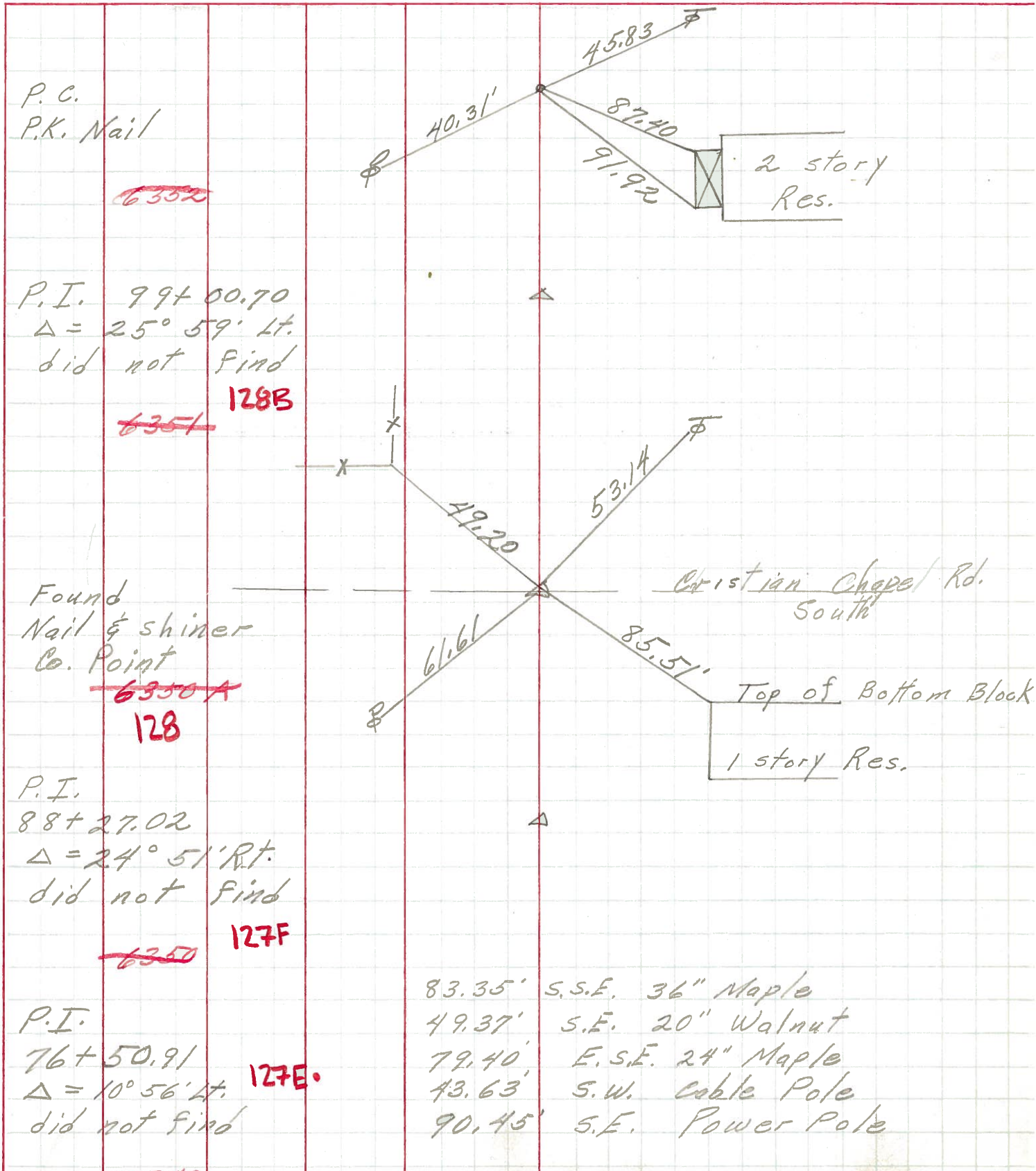
Ties for Control Points

JOB NO.

LEFT

CENTER LINE

RIGHT



P.C.
P.K. Nail

~~6352~~

P.I. 99+00.70
 $\Delta = 25^\circ 59' Lt.$
did not find

128B

~~6351~~

Found
Nail & shiner
Co. Point

~~6350A~~

128

P.I.
88+27.02
 $\Delta = 24^\circ 51' Rt.$
did not find

127F

~~6350~~

P.I.
76+50.91
 $\Delta = 10^\circ 56' Lt.$
did not find

127E

- 83.35' S.S.E. 36" Maple
- 49.37' S.E. 20" Walnut
- 79.40' E.S.E. 24" Maple
- 43.63' S.W. cable Pole
- 90.45' S.E. Power Pole

2 story
Res.

Christian Chapel Rd.
South

Top of Bottom Block
1 story Res.

PERSONNEL TITLE PERSONNEL TITLE

Schneider _____
 Mosser _____
 Barbour _____
 Redding _____

COUNTY Ottawa DATE 9-4-68
 S. R. 163 WEATHER 75°
 SEC. Port Clinton-East TEMP. Fair

DESCRIPTION Ties for Control Points JOB NO. _____

