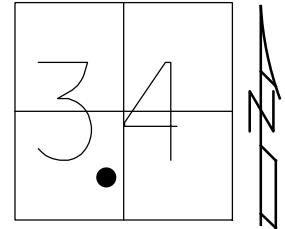


O.D.O.T. DISTRICT 2 SURVEY OFFICE (USE ONLY)

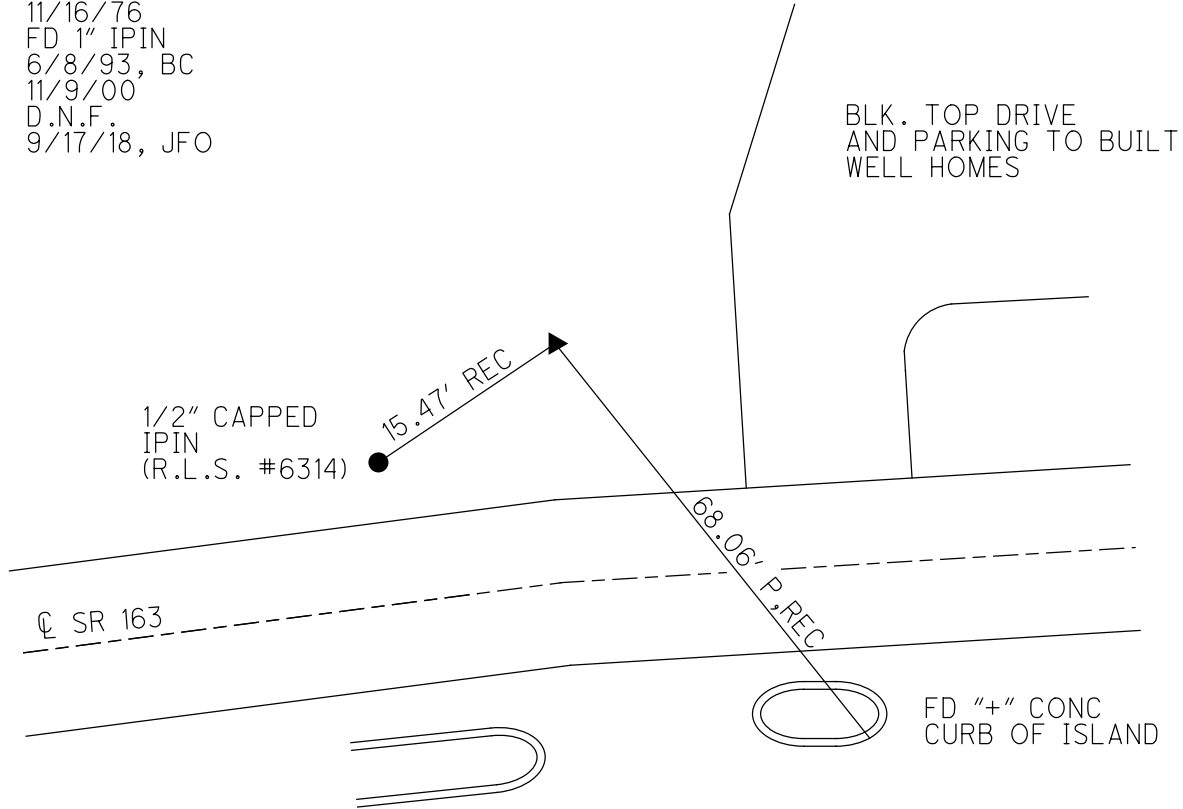
PERSONNEL _____ REFERENCE NO. 127 F SHEET 3 OF 17
 NOTES RHOADES DATE 9/30/20 ROUTE SR 163
 H.C. AUBLE WEATHER CLOUDY COUNTY OTTAWA
 R.C. O'DONNELL TEMP. 54° TOWNSHIP PORTAGE
 SECTION 34
 DWG BY NIESE PID 107919 T 7 N R 17 E

TYPE MONUMENT 1" THREADED IPIN
~~ON SURFACE~~ - BELOW ON
 OFFSET \odot PAVEMENT 37' ~~LT~~ : RT
25' TO LT EDGE PAVEMENT
 STATION: 1491+22



HORZ. DATUM: _____ GEOID: _____
 GRID: NORTHING: _____ EASTING: _____

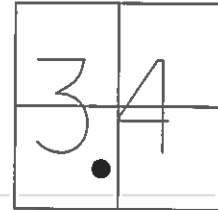
RECORD: P.I.
 $\Delta = 24^\circ 57'$ RT
 PLAN $24^\circ 51'$ RT
 STA. $88+26.87$ (PLANS)
 $88+27.02$
 SET IPIN
 11/16/76
 FD 1" IPIN
 6/8/93, BC
 11/9/00
 D.N.F.
 9/17/18, JFO



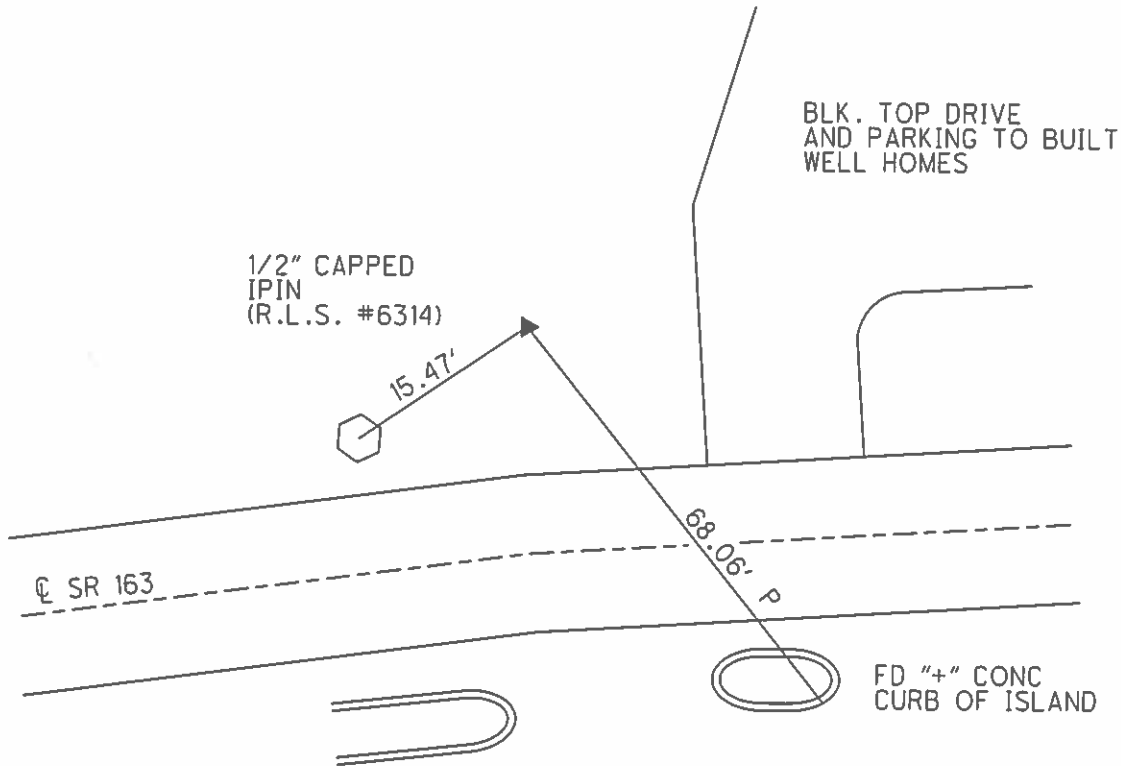
O.D.O.T. DISTRICT 2 SURVEY OFFICE (USE ONLY)

PERSONNEL _____ REFERENCE NO. 127 F SHEET 3 OF 18
 NOTES CHENEY DATE 6/08/93 ROUTE SR 163
 H.C. RIPPLE WEATHER CLOUDY COUNTY OTTAWA
 R.C. BARBOUR TEMP. 80° TOWNSHIP PORTAGE
GEYMAN SECTION 34
 T 7 N R 17 E

TYPE MONUMENT 1" THREADED IPIN
 ON SURFACE - ~~BELOW~~ _____ ON _____
 LEFT - ☉ PAV'T - ~~RIGHT~~ _____ 37'
25' TO LT. EDGE PAVEMENT
 S.L.M. _____ 1491+22
 GRID: NORTHING: _____ EASTING: _____



RECORD: P.I.
 $\Delta = 24^\circ 57'$ RT PLAN $24^\circ 51'$ RT OLD NOTES
 STA. 88+26.87(PLANS) 88+27.02 OLD NOTES
 FD IPIN ON SURF SET 11/16/76
 25' LT E.P. 37' LT ☉ PAV'T



PREVENTIVE MAINTENANCE
 MICROSURFACED 2000
 EXISTING POINT UNCOVERED
 DATE: 11/9/2000

O.D.O.T. DISTRICT 2 SURVEY OFFICE (Use Only)

PERSONNEL _____

REFERENCE NO. 127 F.

SHEET 3 OF 18

NOTES Cheney

DATE 6-08-1993

ROUTE SR 163

H.C. Ripple

WEATHER Cloudy

COUNTY OTTAWA

R.C. Barbour

TEMP. 80°

TOWNSHIP PORTAGE

Geyman

SECTION 34

T 7 N R 17 E

TYPE MONUMENT Fd. 1" Threaded Iron Rod

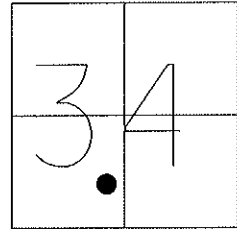
ON SURFACE - BELOW On Surface

LEFT - C/P AV'T - RIGHT 37'

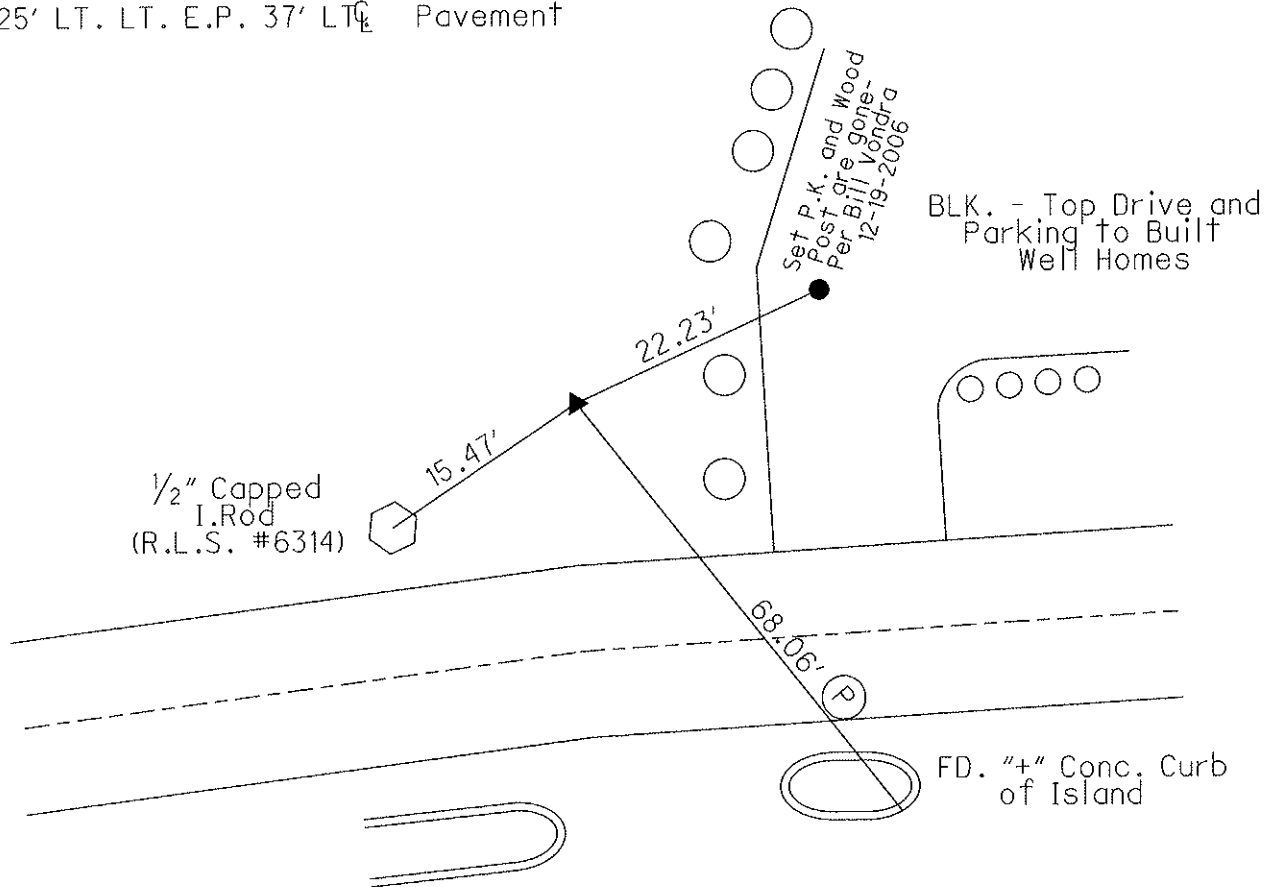
25' TO LT. EDGE PAVEMENT

S.L.M. 1491+22 ±

Grid: Northing: _____ Easting: _____



Record: 9-20-1984 and 9-16-1985
 P.I. Δ = 24° 57' RT. Plan 24° 51' RT. old Notes
 88+26.87 (plans) 88+27.02 old Notes
 Fd. Iron Rod on Surface Set 11-16-1976
 25' LT. LT. E.P. 37' LT_C Pavement



Preventive Maintenance
 Microsurfaced 2000
 Existing Point Uncovered
 Date: 11-9-2000

O.D.O.T. DISTRICT 2 SURVEY OFFICE

PERSONNEL

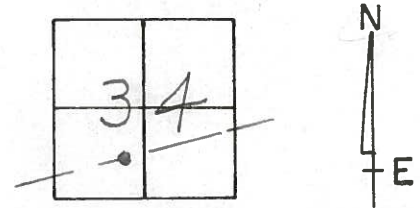
REFERENCE NO. 127EF SHEET 7 OF 23

NOTES Cheney
H.C. RIPPLE
R.C. BARBOUR
GEYMAN

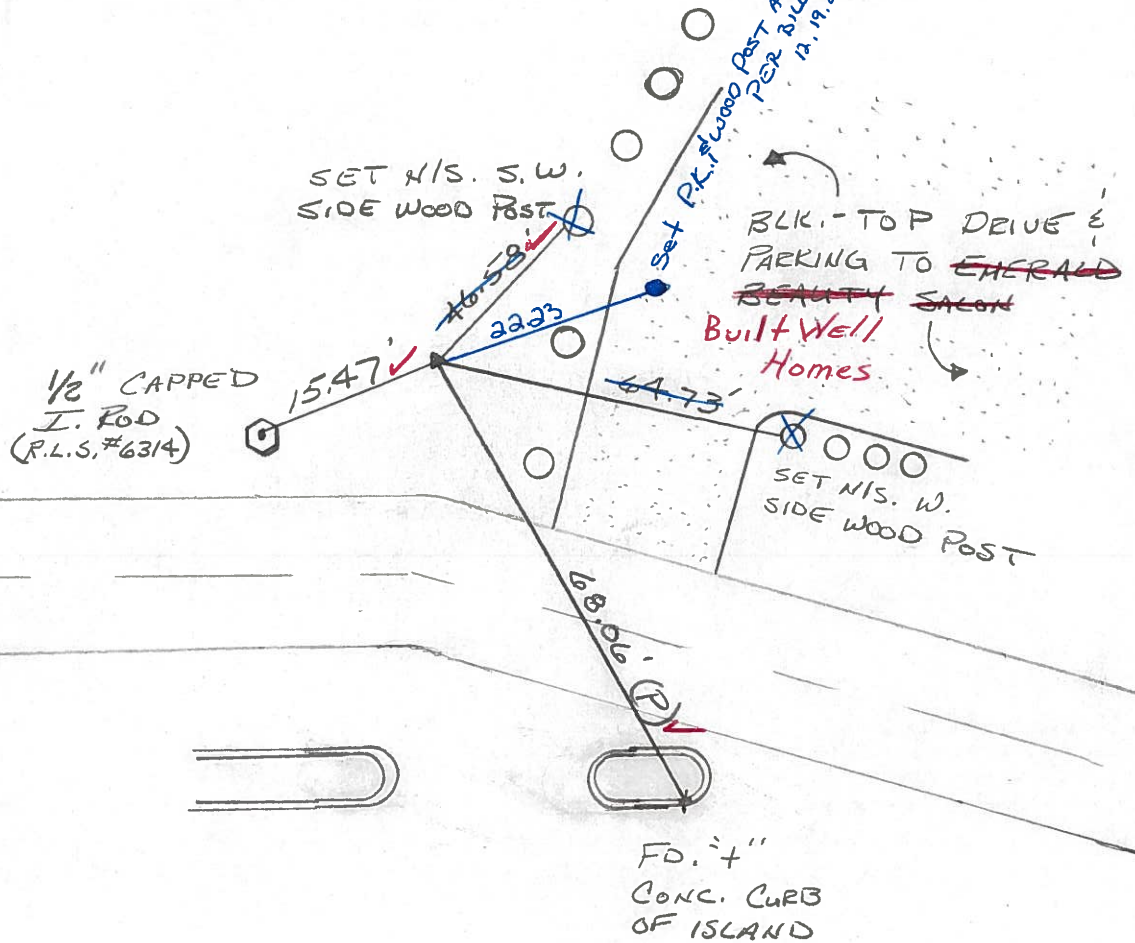
DATE 6-08-1993
WEATHER Cloudy
TEMP. 80°

ROUTE SR. #163
COUNTY OTTAWA
TOWNSHIP Portage
SECTION 34
T 7 N R 17 E

TYPE MONUMENT Fd. 1" Threaded Iron Rod
ON SURFACE - ~~BELOW~~ ON
LEFT - CL PAV'T. - ~~RIGHT~~ 37'
25' TO LT. EDGE PAVEMENT
S.L.M. 1491+22±



Record: 9-20-1984 & 9-16-1985
P.I. Δ = 24° 57' RT. PLAN 24° 51' RT. old Notes
88+26.87 (PIANS) 88+27.02 old Notes
Fd. IRON Rod ON SURFACE SET 11-16-1976
25' LT. LT. E.P. 37' LT. & PAVEMENT

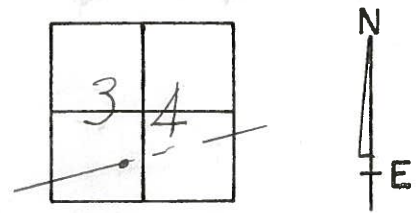


Preventive Maintenance
Microsurfaced 2000
Existing Point Uncovered
Date 11-9-2000

O.D.O.T. DISTRICT 2 SURVEY OFFICE

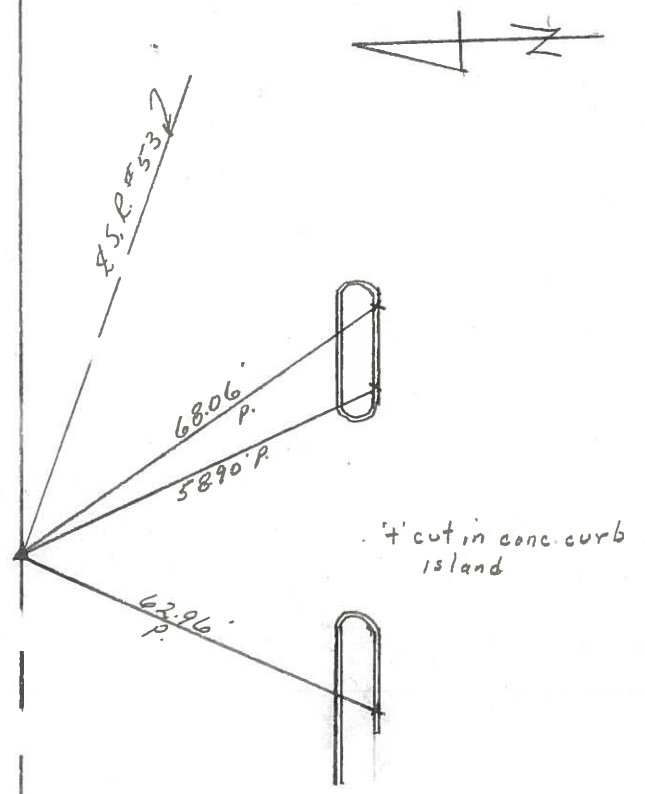
PERSONNEL	REFERENCE NO. _____	SHEET <u>7</u> OF _____
NOTES <u>Cronin</u>	<u>9/16/85</u>	
H.C. <u>Ripple</u>	DATE <u>9/20/84</u>	ROUTE <u>163</u>
R.C. <u>Barbour</u>	WEATHER <u>sunny</u>	COUNTY <u>Ottawa</u>
<u>Coyman</u>	TEMP. <u>66°</u>	TOWNSHIP <u>Portage</u>
		SECTION <u>34</u>
		<u>T 7 N R 17 E</u>

TYPE MONUMENT Iron rod
 ON SURFACE - BELOW on surface
 LEFT - CL PAV'T. - RIGHT LT
25 TO LT. EDGE PAVEMENT
 S.L.M. 1491 ± 35 ±



127F

24° 51' Rt. old notes
P.I. A = 24° 57' Rt. Plan
88+26.87 (Plans) 88+27.02 old notes
Fd I Rod on surface. set
11/16/76 - 25' Lt. Lt. E.P.
37' Lt. & Pavt.

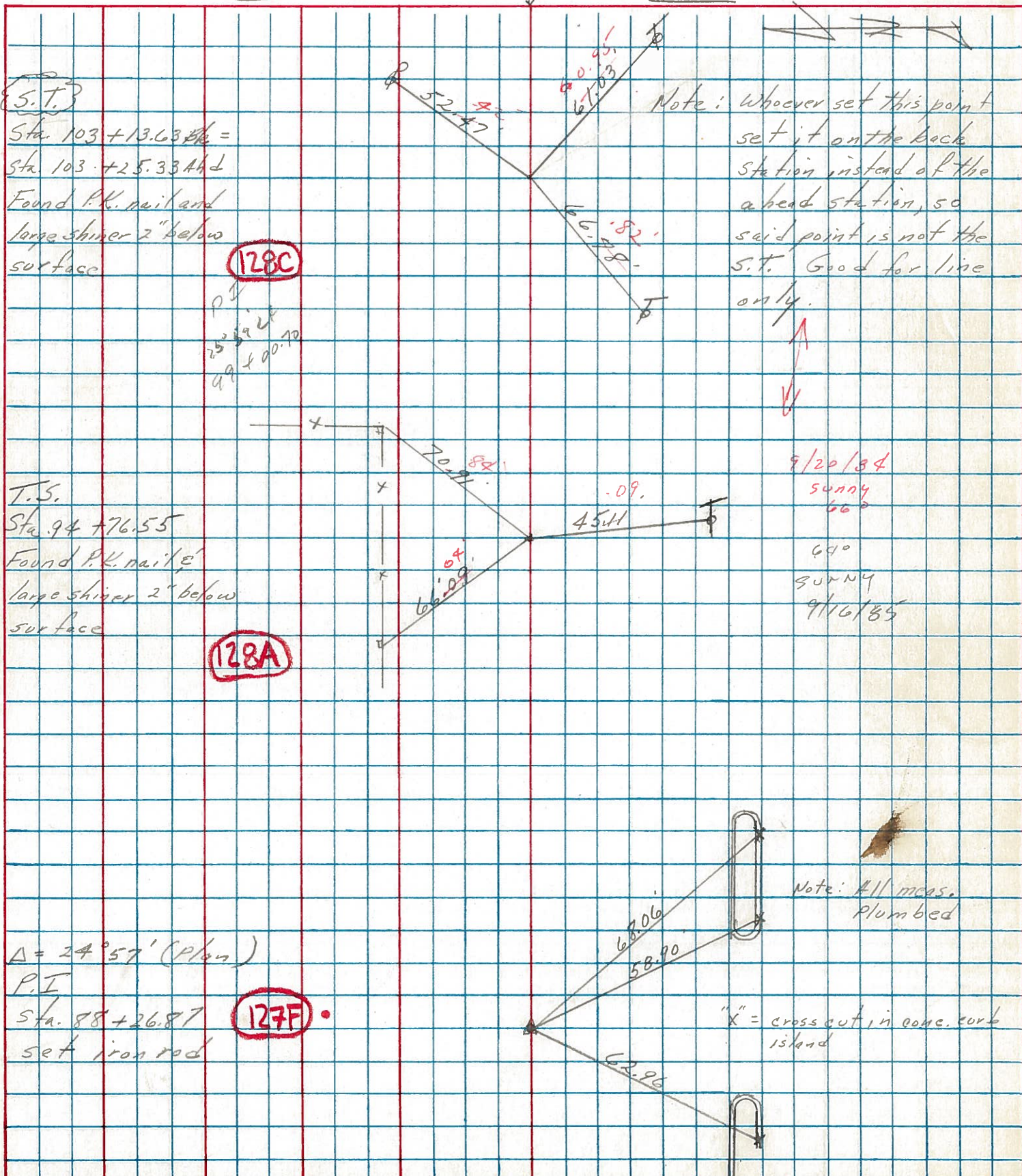


PERSONNEL TITLE PERSONNEL TITLE
 Cronin _____ Schneider _____
 Ripple _____ Mosser _____
 Geyman _____ Barbour _____

COUNTY Ottawa DATE 11/16/76
 S. R. # 163 WEATHER Sunny
 SEC. _____ TEMP. 25°

DESCRIPTION Ties for Control Points

JOB NO. _____



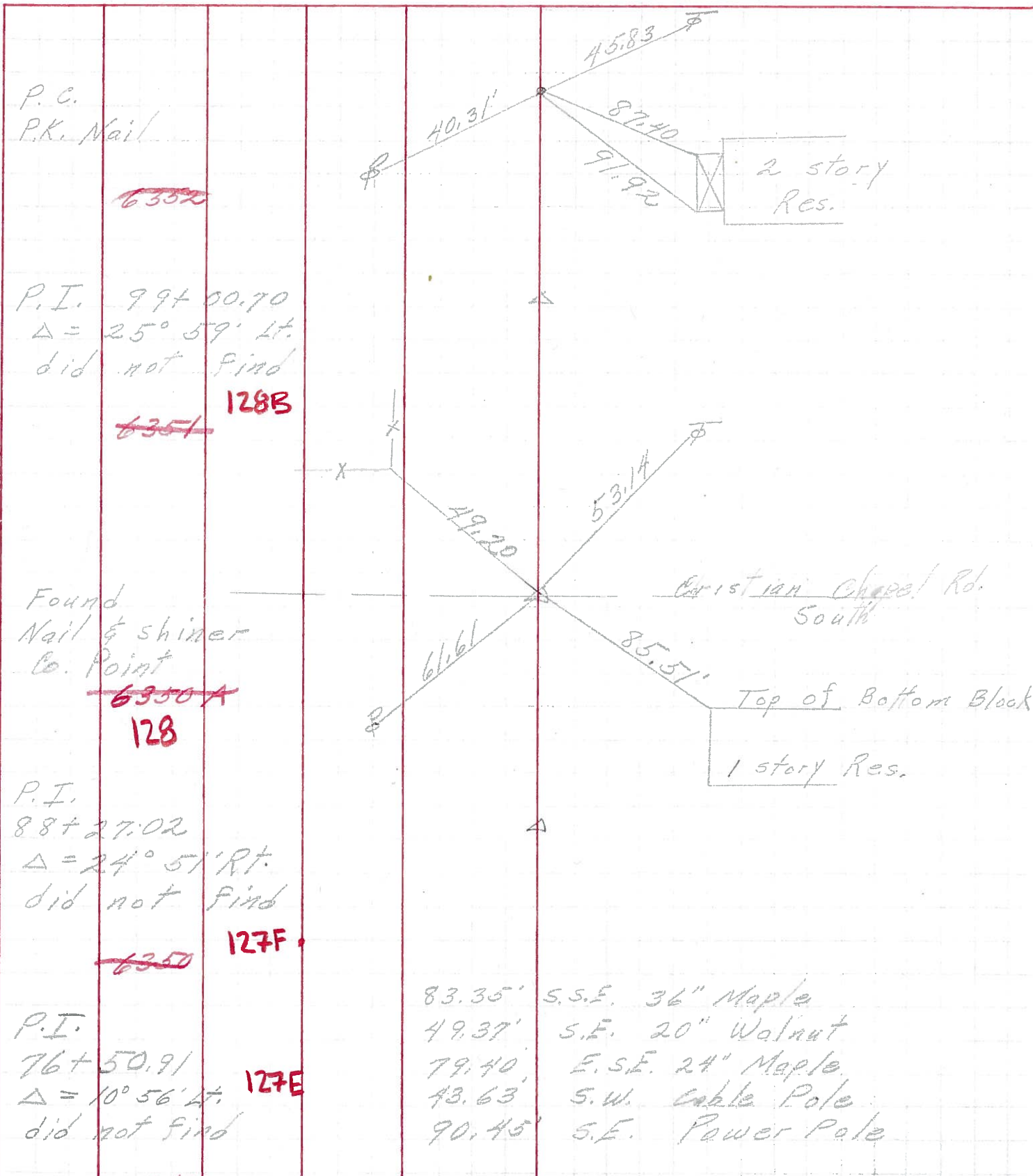
PERSONNEL TITLE PERSONNEL TITLE
Schneider _____
Mosser _____
Potts _____

COUNTY Ottawa DATE 3-2-70

S. R. 163 WEATHER cloudy

SEC Port Clinton-East TEMP. 35°

DESCRIPTION Ties for Control Points JOB NO. _____



PERSONNEL	TITLE	PERSONNEL	TITLE	COUNTY	DATE
Schneider		Potts		Ottawa	9-4-68
Mosser				S. R. 163	WEATHER 75°
Barbour				SEC. Port Clinton-East	TEMP. Fair
Redding					

DESCRIPTION Ties for Control Points JOB NO. _____

