

O.D.O.T. DISTRICT 2 SURVEY OFFICE (USE ONLY)

PERSONNEL

REFERENCE NO. 128 A

SHEET 5 OF 17

NOTES CHENEY

DATE 6/11/93

ROUTE SR 163

H.C. RIPPLE

WEATHER SUNNY

COUNTY OTTAWA

R.C. BARBOUR

TEMP. 75°

TOWNSHIP PORTAGE

GEYMAN

SECTION 34

DWG BY NIESE PID 107919

T 7 N R 17 E

TYPE MONUMENT P.K./WASHER

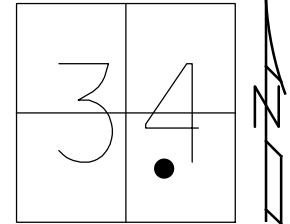
ON SURFACE - ~~BELOW~~ ON

OFFSET 11.0' TO LT EDGE PAVEMENT LT : ~~RT~~

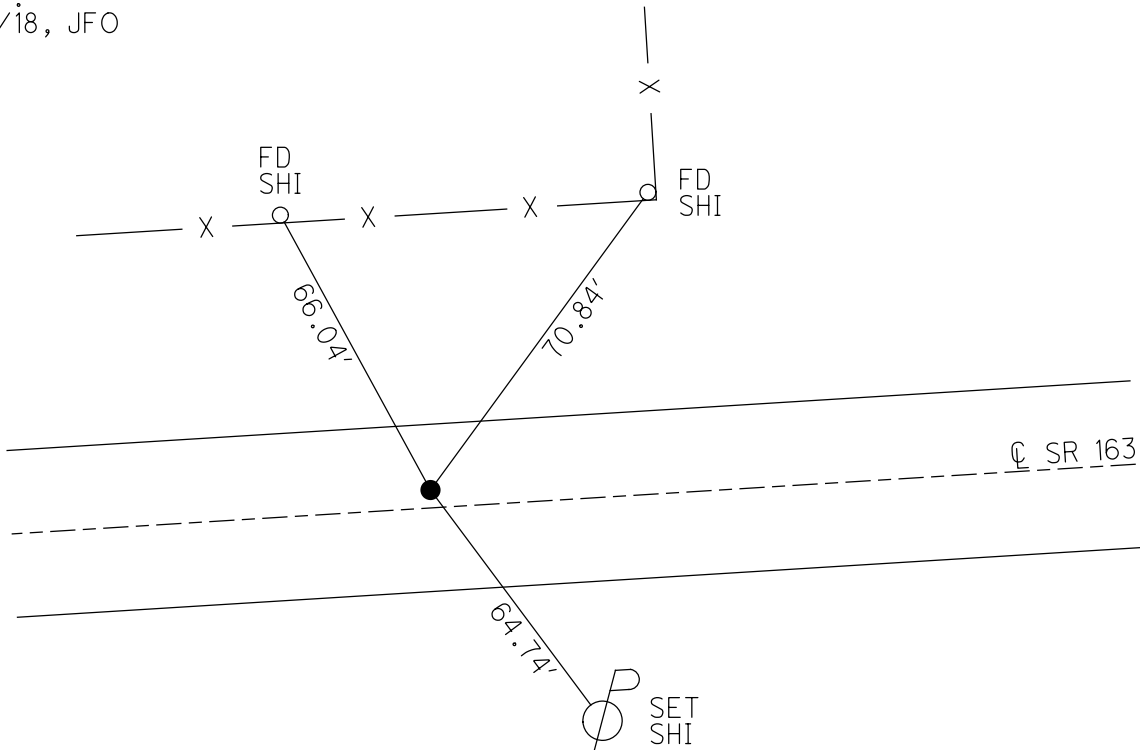
STATION: 1497+68

HORIZ.DATUM: _____ GEOID: _____

GRID: NORTHING: _____ EASTING: _____



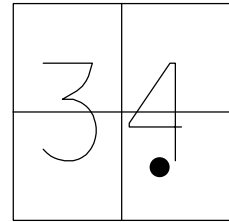
RECORD: T.S
 STA. 94+76.55
 9/16/85
 FD P.K./WASHER
 6/11/93, JLR
 SET P.K./WASHER
 7/13/93, JLR
 FD P.K./WASHER
 11/9/00
 D.N.F.
 9/17/18, JFO



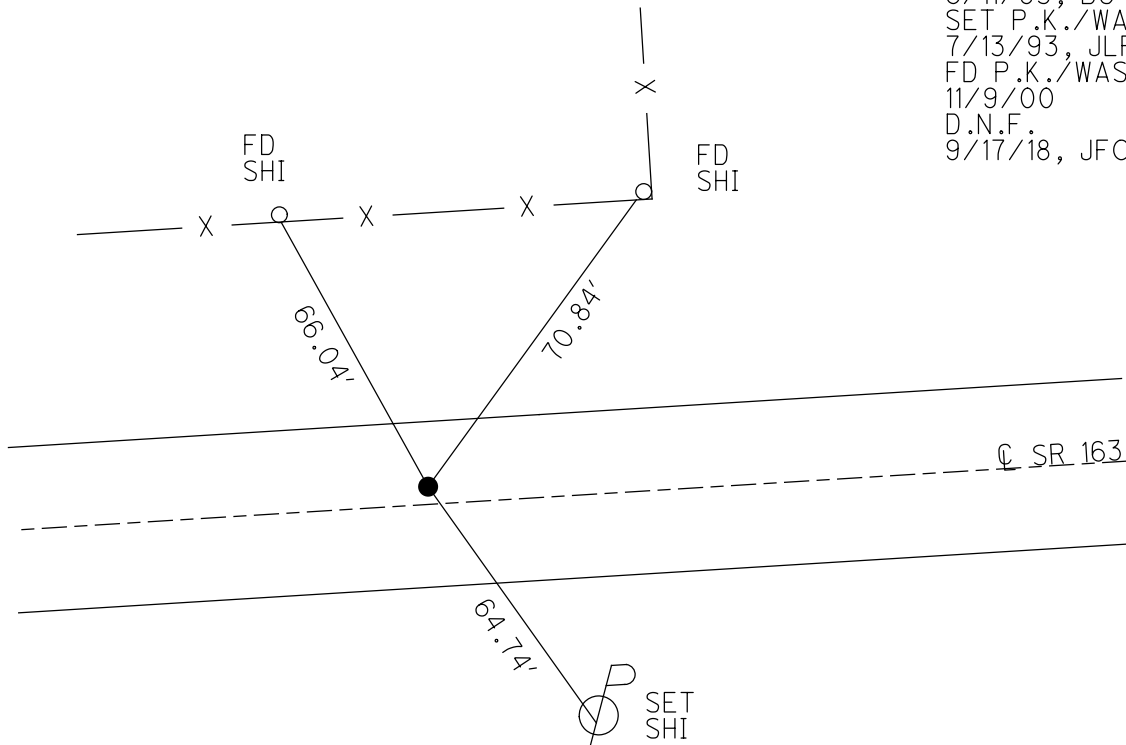
O.D.O.T. DISTRICT 2 SURVEY OFFICE (USE ONLY)

PERSONNEL	REFERENCE NO. <u>128 A</u>	SHEET <u>5</u> OF <u>18</u>
NOTES <u>CHENEY</u>	DATE <u>6/11/93</u>	ROUTE <u>SR 163</u>
H.C. <u>RIPPLE</u>	WEATHER <u>SUNNY</u>	COUNTY <u>OTTAWA</u>
R.C. <u>BARBOUR</u>	TEMP. <u>75°</u>	TOWNSHIP <u>PORTAGE</u>
<u>GEYMAN</u>		SECTION <u>34</u>
		T <u>7</u> N R <u>17</u> E

TYPE MONUMENT P.K./WASHER
 ON SURFACE - ~~BELOW~~ ON
 LEFT - ☉ PAV'T - ~~RIGHT~~ 1'
11' TO LT EDGE PAVEMENT
 S.L.M. 1497+68
 GRID: NORTHING: _____ EASTING: _____



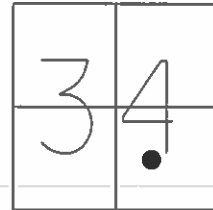
RECORD: T.S
 STA. 94+76.55
 9/16/85
 FD P.K./WASHER
 6/11/93, BC
 SET P.K./WASHER
 7/13/93, JLR
 FD P.K./WASHER
 11/9/00
 D.N.F.
 9/17/18, JFO



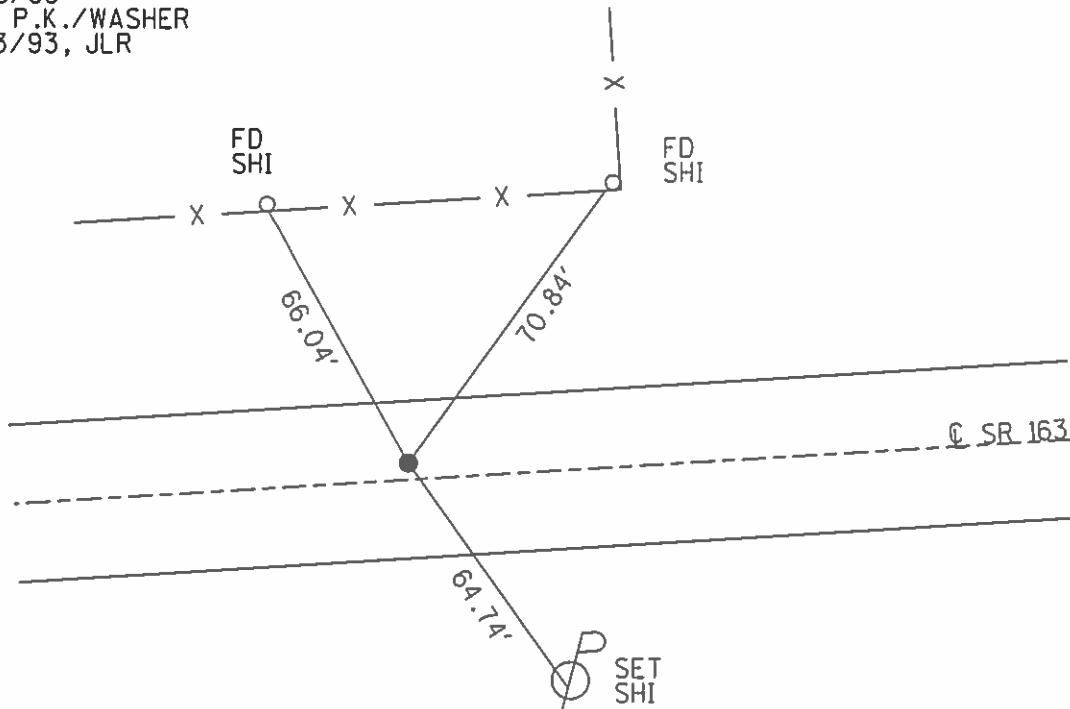
O.D.O.T. DISTRICT 2 SURVEY OFFICE (USE ONLY)

PERSONNEL _____ REFERENCE NO. 128 A SHEET 5 OF 18
 NOTES CHENEY DATE 6/11/93 ROUTE SR 163
 H.C. RIPPLE WEATHER SUNNY COUNTY OTTAWA
 R.C. BARBOUR TEMP. 75° TOWNSHIP PORTAGE
GEYMAN SECTION 34
 T 7 N R 17 E

TYPE MONUMENT P.K./WASHER
 ON SURFACE - ~~BELOW~~ _____ ON _____
 LEFT - ☉ PAV'T - RIGHT _____ 1'
1' TO LT EDGE PAVEMENT
 S.L.M. _____ 1497+68
 GRID: NORTHING: _____ EASTING: _____



RECORD: T.S.
 STA. 94+76.55
 9/16/85
 SET P.K./WASHER
 7/13/93, JLR



PREVENTIVE MAINTENANCE
 MICROSURFACED 2000
 EXISTING POINT UNCOVERED
 DATE: 11/9/2000

O.D.O.T. DISTRICT 2 SURVEY OFFICE (Use Only)

PERSONNEL

REFERENCE NO. 128 A

SHEET 5 OF 18

H.C. Cheney
 R.C. Ripple
Barbour
Geyman

DATE 6-11-1993
 WEATHER Sunny
 TEMP. 75°

ROUTE SR 163
 COUNTY OTTAWA
 TOWNSHIP PORTAGE
 SECTION 34
 T 7 N R 17 E

TYPE MONUMENT Out- No Pull

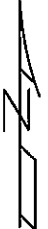
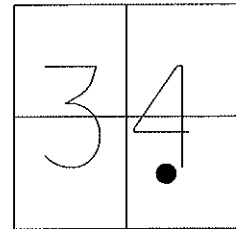
ON SURFACE - BELOW _____

LEFT - C/P AV'T - RIGHT 1'

11' TO LT. EDGE PAVEMENT

S.L.M. 1497+68 ±

Grid: Northing: _____ Easting: _____

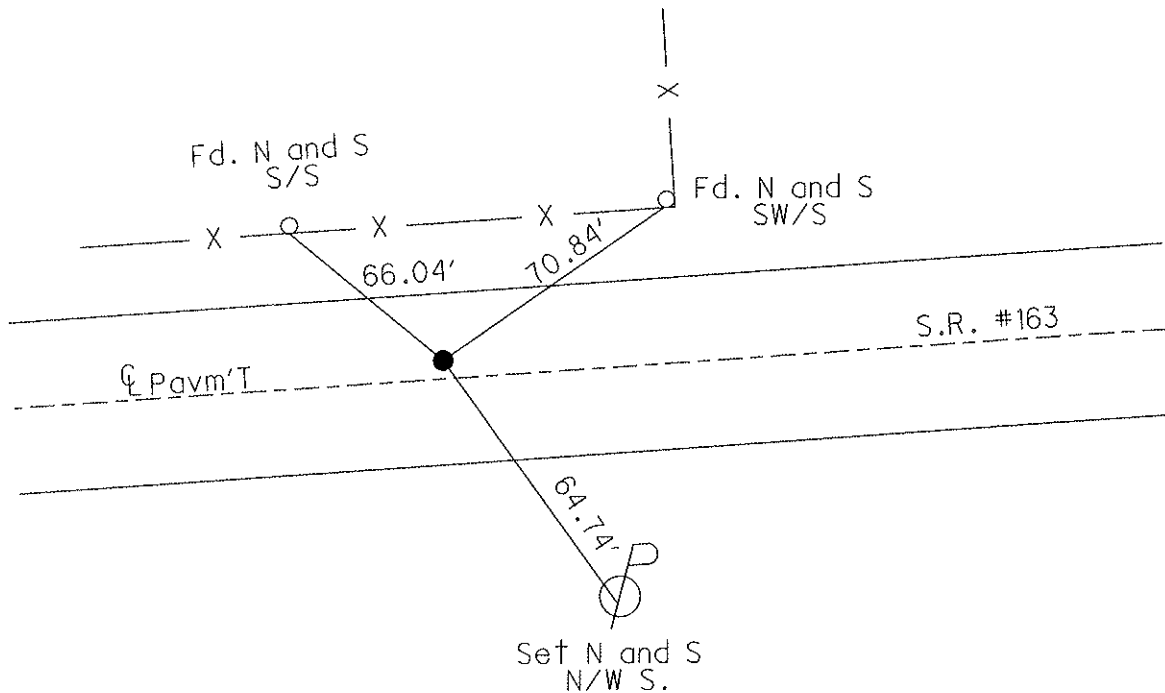


Record: 9-16-1985

T.S 94+76.55

Ties Do Not Hit

Note: Set P.K. and Washer
 Using Fence Posts
 7-13-1993 J.L.R.



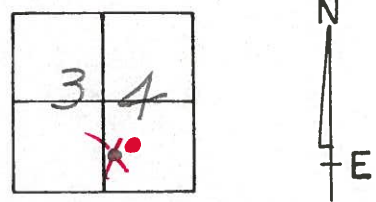
Preventive Maintenance
 Microsurfaced 2000
 Existing Point Uncovered
 Date: 11-9-2000

O.D.O.T. DISTRICT 2 SURVEY OFFICE

PERSONNEL _____ REFERENCE NO. 128 A SHEET 9 OF 23

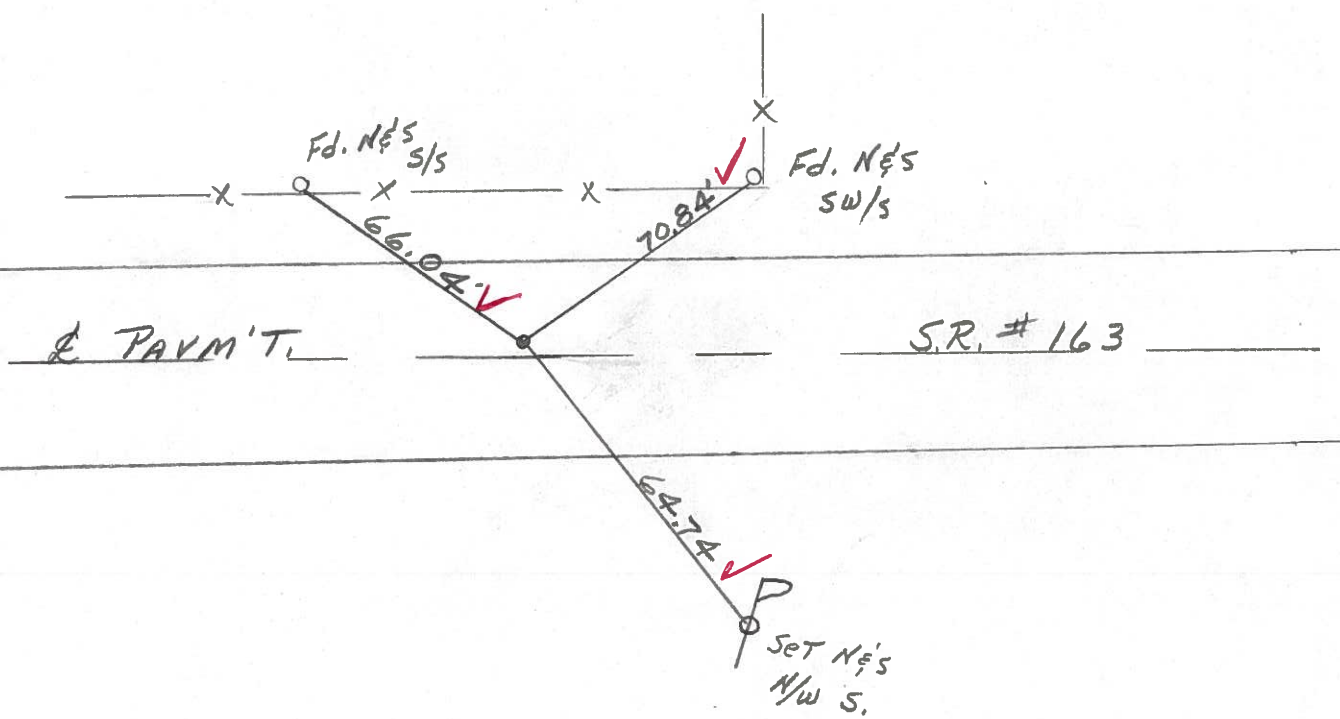
NOTES CHENEY
 H.C. RIPPLE DATE 6-11-1993 ROUTE SR#163
 R.C. BARBOUR WEATHER SUNNY COUNTY OTTAWA
GEYMAN TEMP. 75° TOWNSHIP PORTAGE
 SECTION 34
T 7 N R 17 E

TYPE MONUMENT OUT - No Pull
 ON SURFACE - BELOW _____
 LEFT - ¢ PAV'T. - RIGHT 1'
11' TO LT. EDGE PAVEMENT
 S.L.M. 1497+68±



Record: 9-16-1985
T.S. 94+76.55
Ties Do NOT Hit.

NOTE: SET PK & WASHER
USING FENCE POSTS
7-13-1993 J.L.R.



Preventive Maintenance
 Microsurfaced 2000
 Existing Point Uncovered
 Date 11-9-2000

O.D.O.T. DISTRICT 2 SURVEY OFFICE

PERSONNEL

NOTES CROWN
H.C. RIPPLE
R.C. BARBOUR
GEYMAN

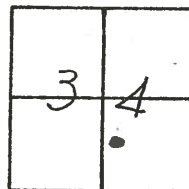
REFERENCE NO. _____

DATE 9/16/85
WEATHER SONNY
TEMP. 64°

SHEET 9 OF _____

ROUTE #163
COUNTY OTTAWA
TOWNSHIP PORTAGE
SECTION 34
T 7 N R 17 E

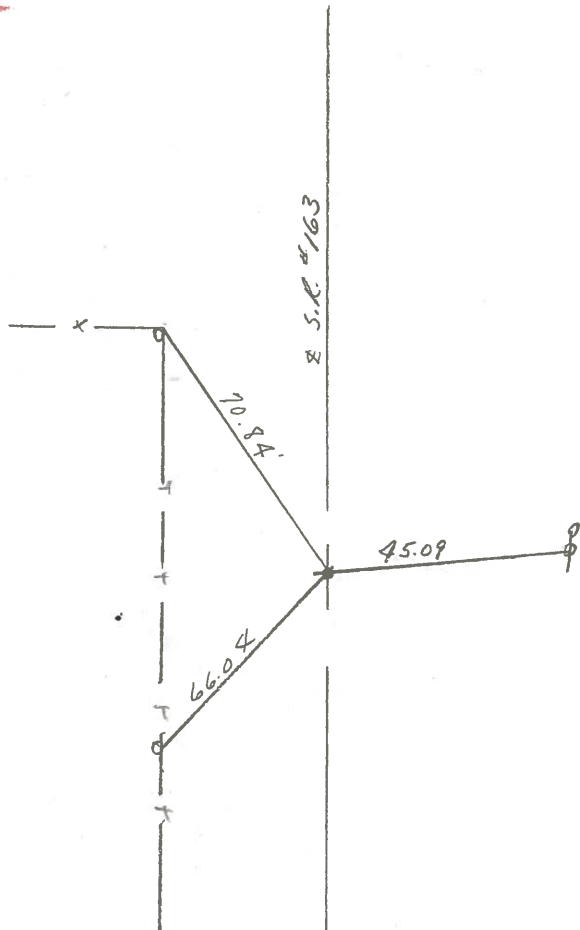
TYPE MONUMENT out
ON SURFACE - BELOW _____
LEFT- & PAV'T. - RIGHT 1' Lt. & Pav't.
_____ TO _____ EDGE PAVEMENT
S.L.M. _____



128A



T.S.
94+76.55
TIES DO NOT HIT



PERSONNEL	TITLE	PERSONNEL	TITLE
Cronin		Schneider	
Ripple		Mosser	
Geyman		Barbour	

COUNTY Ottawa DATE 11/16/76
 S. R. # 163 WEATHER Sunny
 SEC. _____ TEMP. 25°

DESCRIPTION Ties for Control Points JOB NO. _____

